



Wichita-Sedgwick County Metropolitan Area Planning Department

January 25, 2010

MARC LLC
914 Cypress Ct.
Wichita, KS 67206

Miracle Signs c/o Brooke Flowers
3611 N Broadway
Wichita, KS 67219

RE: BZA2010-02: Sign Code Adjustment to permit an electronic message sign on property zoned GO General Office.

Legal Description: Lot 3; Block 1, Plaza Central Office Park Addition, Wichita, Sedgwick County, Kansas; generally located south of Central and west of 127th Street E.

Dear Applicants:

We have reviewed your request for a Sign Code Adjustment to permit an electronic message sign on the aforementioned property. From reviewing your application, we understand that you propose a 43.3" by 81.09" LED sign within a larger sign.

Section 24.04.251.2.i. of the Sign Code allows an adjustment to permit an electronic message sign in GO zoning when the three conditions required by Section 24.04.251.6. of the Sign Code are met. We find that allowing the electronic message sign as proposed meets the three conditions required by Section 24.04.251.6. of the Sign Code as set out below:

- 1) Impact on existing uses in surrounding areas: Office zoning exists east and west of the site. The nearest residence is over 300 feet from the proposed sign site. There should be no impact on existing uses in surrounding areas.
- 2) Compatibility with existing or permitted uses on abutting sites: An electronic message sign should not reduce compatibility of the sign with surrounding uses, as the sign will not be permitted to flash or display moving images, and graphics changes will be restricted to one change per second or slower.

City Hall • 10th Floor • 455 North Main • Wichita, Kansas 67202-1688

T 316.268.4421 **F** 316.268.4390

www.wichita.gov

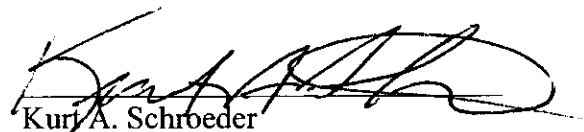
- 3) Effect on public health, safety or welfare: There will be no encroachment into public right-of-way; therefore, there should not be a negative impact on the public health, safety or welfare nor will properties or improvements in the vicinity be materially injured.

Our signatures below indicate that a Sign Code Adjustment to permit an electronic message sign on the aforementioned property is hereby granted, subject to the following conditions:

- 1) The sign shall be in conformance with the approved elevation drawing.
- 2) No animated, flashing or moving images or text shall be displayed on the sign; the sign shall not make copy or graphics changes faster than once per second.
- 3) Portable signage shall not be permitted on the subject property.
- 4) If the Zoning Administrator finds that there is a violation of any of the conditions of the Zoning Adjustment, the Zoning Administrator, in addition to enforcing the other remedies set forth in the Unified Zoning Code, may, with the concurrence of the Planning Director, declare that the Zoning Adjustment is null and void.

The development application sign should now be removed from the property.


John L. Schlegel
Planning Director


Kurt A. Schroeder
Superintendent of Central Inspection

cc: Kurt Schroeder, Office of Central Inspection
JR Cox, Office of Central Inspection
Susan Schlapp, CM District II

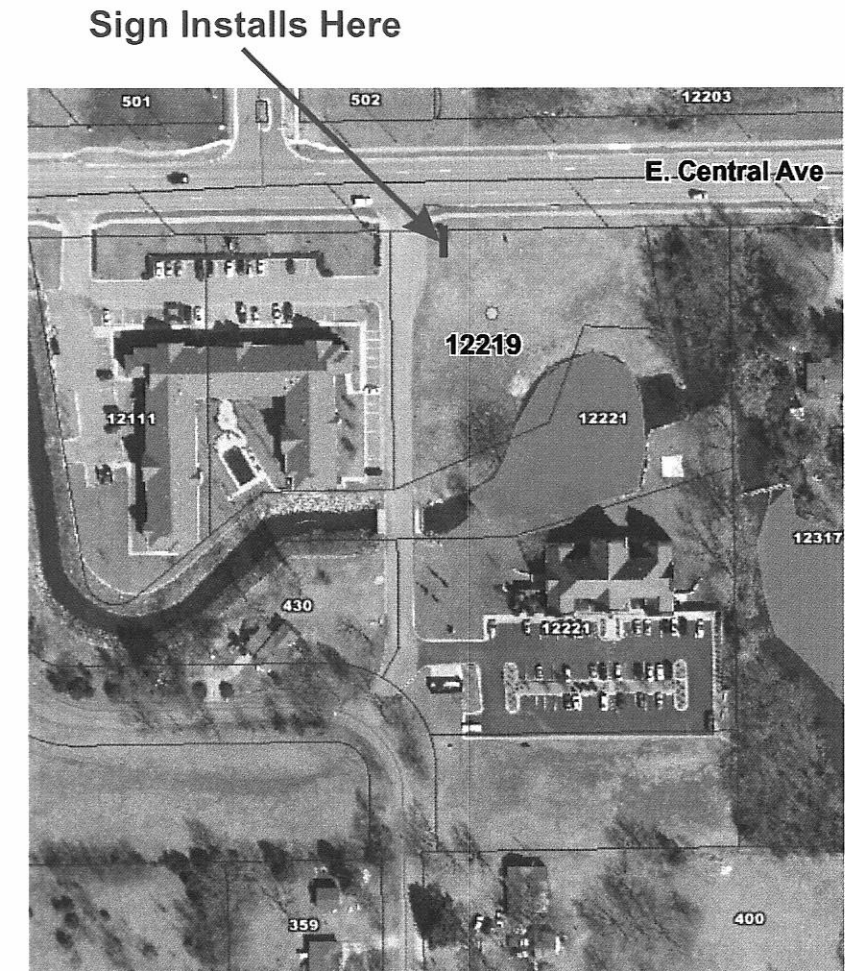
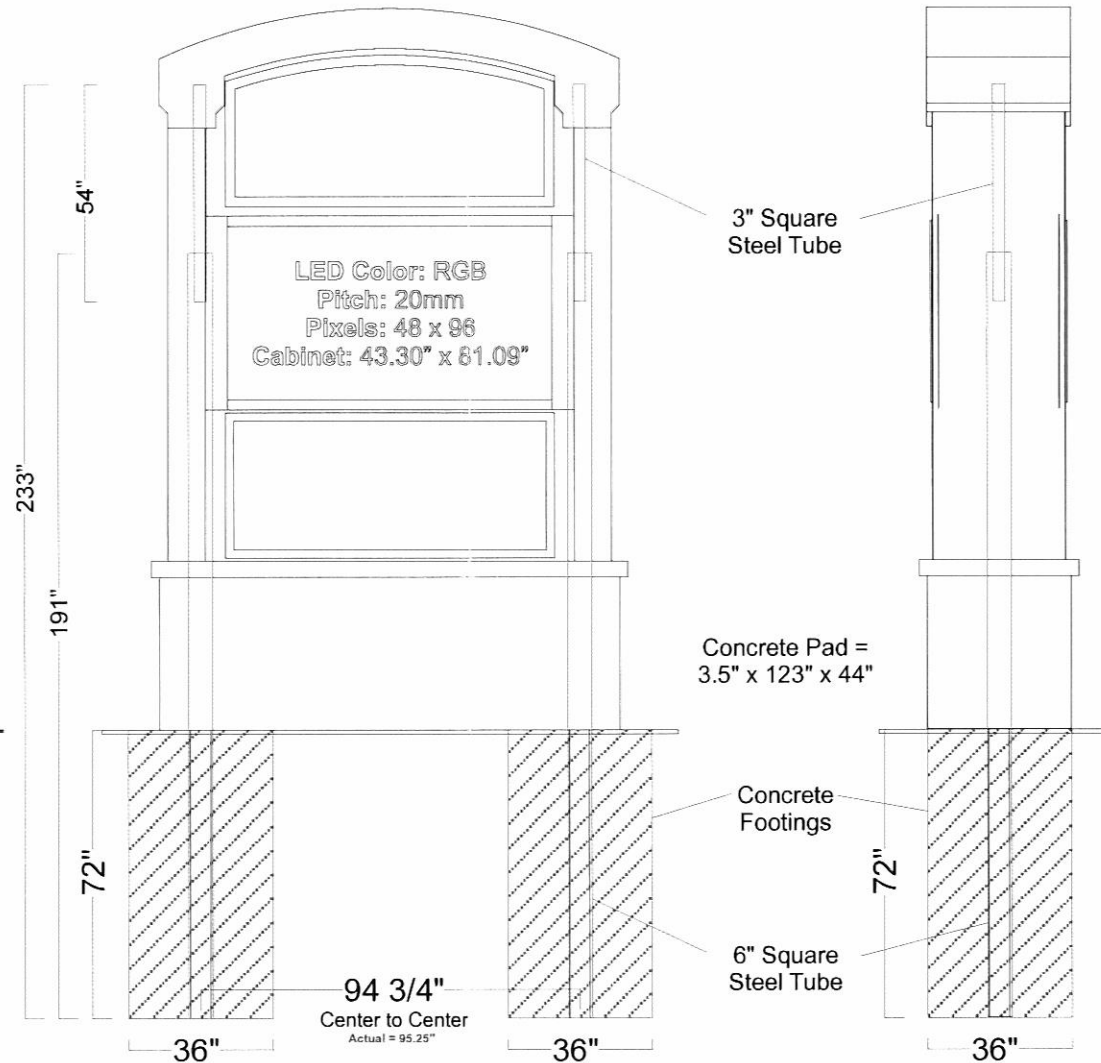


91020 - Hansa Center for Optimum Health - 12219 E. Central St. - Wichita, Kansas

1 - D/F 15' Monument Sign with LEDs

Site Plan
1/4" = 1' Scale

3611 N. Broadway Wichita, KS 67219
316 - 832-1177 fax : 316 - 838-4774



NTS

Main Cabinet:

- All Alum. Construction - Frame and Skins
- Bolted on Steel Pole Guides and Welded Steel Pipes
- Concrete Footings
- Internal Lighted with Fluorescent Lamps

Lighted Faces:

- 3/16" White SG Acrylic Faces
- Oracal 8500-065 Cobalt Blue Translucent Vinyl
- Top Faces get Digital Translucent Prints
- Lower Tenant Faces get Translucent Vinyl Copy