



Surveyor  
Mark A. Savoy RLS #788

FILE COPY

Know all men by these presents that we, the undersigned, have caused the land described in the surveyors certificate to be platted into Lots, a Blocks and Street to be known as "FREUND ADDITION", Sedgwick County, Kansas. The Street is hereby dedicated to and for the use of the public. The Drainage and Utility easements are hereby granted for the construction and maintenance of all public utilities and for drainage purposes. The Floodway Reserve Easement is hereby reserved for floodway reserve purposes and shall be the responsibility of the owners of Lots 1 and 2, Block A, "FREUND ADDITION", until such time as the appropriate governing body elects to assume the responsibility for maintenance and improvements to the drainage. No buildings shall be constructed or placed on or within said Floodway Reserve. There shall not be any fill, change of grade, creation of channel, or any other work carried on in said Floodway Reserve without the permission of the Engineer for said appropriate governing body. A drainage plan has been developed for this plat and all drainage easements, rights-of-way, or reserves shall remain at established grades, or as modified with the approval of the appropriate governing Engineer, and unobstructed to allow for the conveyance of stormwater. Access Control is hereby granted to the appropriate governing body and is as shown on face of the plat. Minimum Pad Elevation for Lowest Opening is 1365 NAVD 88.

\* FEMA Floodplain and regulatory Floodway boundaries are subject to periodic change and such change may affect the intended land use within the subdivision.

*Chad M. Freund*  
Chad M. Freund

State of Kansas)  
Sedgwick County) SS

8<sup>th</sup> The foregoing instrument acknowledged before me, this day of November 2010, by Chad M. Freund a single person.

*Linda S Hamby* Notary Public

My App't. Exp. 10/30/11



# FREUND ADDITION

## SEDGWICK COUNTY, KANSAS

State of Kansas) SS  
Sedgwick County)

This plat of "FREUND ADDITION", Sedgwick County, Kansas, has been submitted to and approved by the Wichita-Sedgwick County Metropolitan Area Planning Commission, Wichita, Kansas.

Dated this \_\_\_\_\_ day of \_\_\_\_\_, 2010.

Wichita-Sedgwick County Metropolitan Area Planning Commission

\_\_\_\_\_  
Chairman  
Debra Miller Stevens  
\_\_\_\_\_  
Secretary  
John L. Schlegel

This plat approved and all dedications shown hereon, are hereby accepted by the Board of County Commissioners, Sedgwick County, Kansas, this \_\_\_\_\_ day of \_\_\_\_\_, 2010.

\_\_\_\_\_  
Chairman  
Karl Peterjohn  
\_\_\_\_\_  
County Clerk  
Kelly B. Arnold

This plat approved and all dedications shown hereon, accepted by the City Council of the City of Wichita, Kansas, this \_\_\_\_\_ day of \_\_\_\_\_, 2010.

\_\_\_\_\_  
Mayor  
Carl Brewer  
\_\_\_\_\_  
City Clerk  
Karen Sublett

Reviewed in accordance with K.S.A. 58-2005 on this \_\_\_\_\_ day of \_\_\_\_\_, 2010.

\_\_\_\_\_  
Deputy County Surveyor  
Sedgwick County Kansas  
Tricia L. Robella, LS #1246

Entered on transfer record this \_\_\_\_\_ day of \_\_\_\_\_, 2010.

\_\_\_\_\_  
County Clerk  
Kelly B. Arnold

State of Kansas) SS  
Sedgwick County)

This is to certify that this plat has been filed for record in the office of the Register of Deeds, this \_\_\_\_\_ day of \_\_\_\_\_, 2010, at o'clock \_\_\_\_\_ M. and is duly recorded.

\_\_\_\_\_  
Register of Deeds  
Bill Meek  
\_\_\_\_\_  
Deputy  
Tonya Buckingham

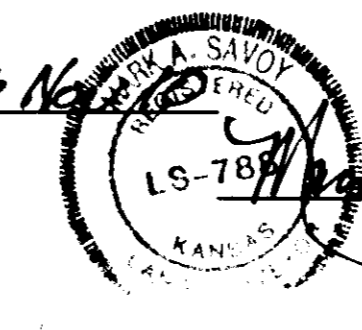
We, Savoy Company, P.A., Surveyors in aforesaid county and state do hereby certify that, under the supervision of the undersigned, we have surveyed and platted "FREUND ADDITION", Sedgwick County, Kansas and that the accompanying plat is a true and correct exhibit of the property surveyed, described as:

That part of the SE1/4 of Sec. 22, Twp. 26-S, R-2-W of the 6th P.M., Sedgwick County, Kansas described as commencing at the S.E. Corner of said SE1/4; thence north along the east line of said SE1/4, 272.5 feet for a place of beginning; thence north along the east line of said SE1/4, 667.5 feet; thence west, parallel with the south line of said SE1/4, 821 feet; thence south, parallel with the east line of said SE1/4, 667.5 feet; thence east parallel with the south line of said SE1/4, 821 feet to the place of beginning.

All Public easements and dedications being vacated by virtue of K.S.A. 12-512(b).

Savoy Company, P.A.

Date 5 Nov 2010

  
\_\_\_\_\_  
Mark A. Savoy LS #788  
Surveyor

Know all men by these presents that we, the undersigned, have caused the land described in the surveyors certificate to be platted into Lots, a Blocks and Street to be known as "FREUND ADDITION", Sedgwick County, Kansas. The Street is hereby dedicated to and for the use of the public. The Drainage and Utility easements are hereby granted for the construction and maintenance of all public utilities and for drainage purposes. The Floodway Reserve Easement is hereby reserved for floodway reserve purposes and shall be the responsibility of the owners of Lots 1 and 2, Block A, "FREUND ADDITION", until such time as the appropriate governing body elects to assume the responsibility for maintenance and improvements to the drainage. No buildings shall be constructed or placed on or within said Floodway Reserve. There shall not be any fill, change of grade, creation of channel, or any other work carried on in said Floodway Reserve without the permission of the Engineer for said appropriate governing body. A drainage plan has been developed for this plat and all drainage easements, rights-of-way, or reserves shall remain at established grades, or as modified with the approval of the appropriate governing Engineer, and unobstructed to allow for the conveyance of stormwater. Access Control is hereby granted to the appropriate governing body and is as shown on face of the plat. Minimum Pad Elevation for Lowest Opening is 1365 NAVD 88.

  
Chad M. Freund

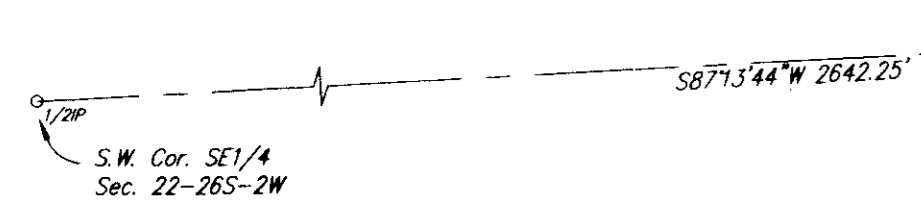
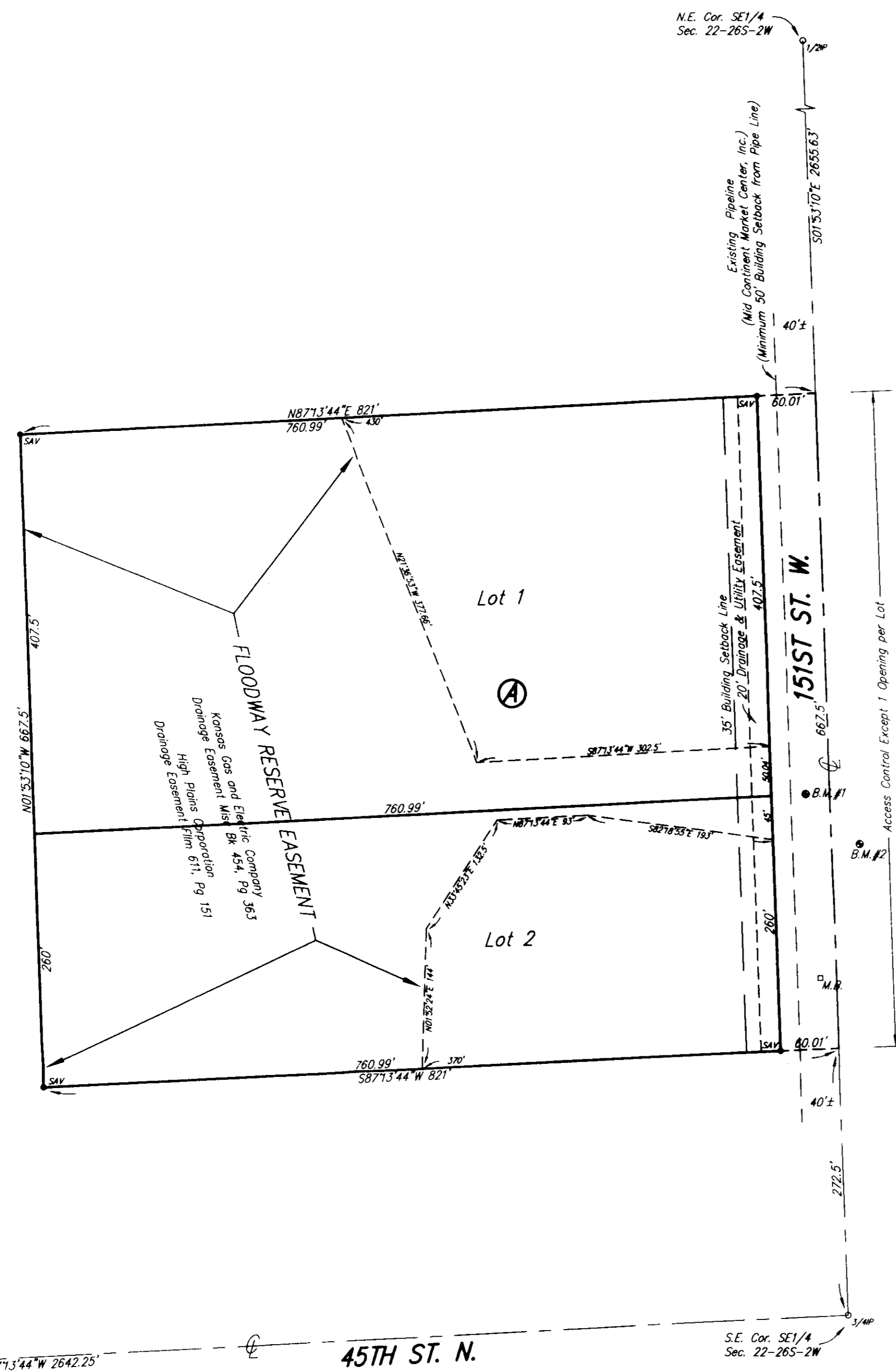
State of Kansas) SS  
Sedgwick County)

The foregoing instrument acknowledged before me, this 8<sup>th</sup> day of November, 2010, by Chad M. Freund a single person.

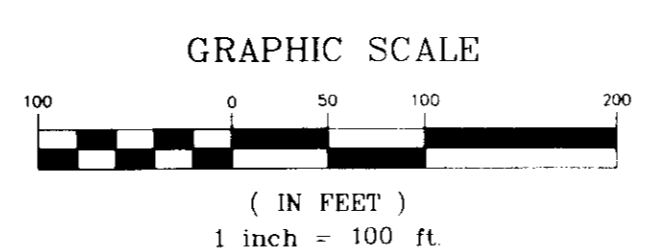
\_\_\_\_\_  
Notary Public  
Linda S. Hamley

My App't. Exp. 10/30/11





Benchmark #1: Savoy Monument 35.5' E. of Easterly most, Common Cor. of Lots 1 & 2 Block A, Freund Addition  
Elevation = 1369.84 NAVD 88  
Benchmark #2: Square Cut @ N.W. Cor. of Metal Well Head - 80.6' W. & 49.5' S. of Easterly most, Common Cor. of Lots 1 & 2 Block A, Freund Addition  
Elevation = 1372.36 NAVD 88



Minimum Pad Elevation for Lowest Opening: Lots 1 and 2 - 1365 NAVD 88

SURVEY MARKS: 1/4\"