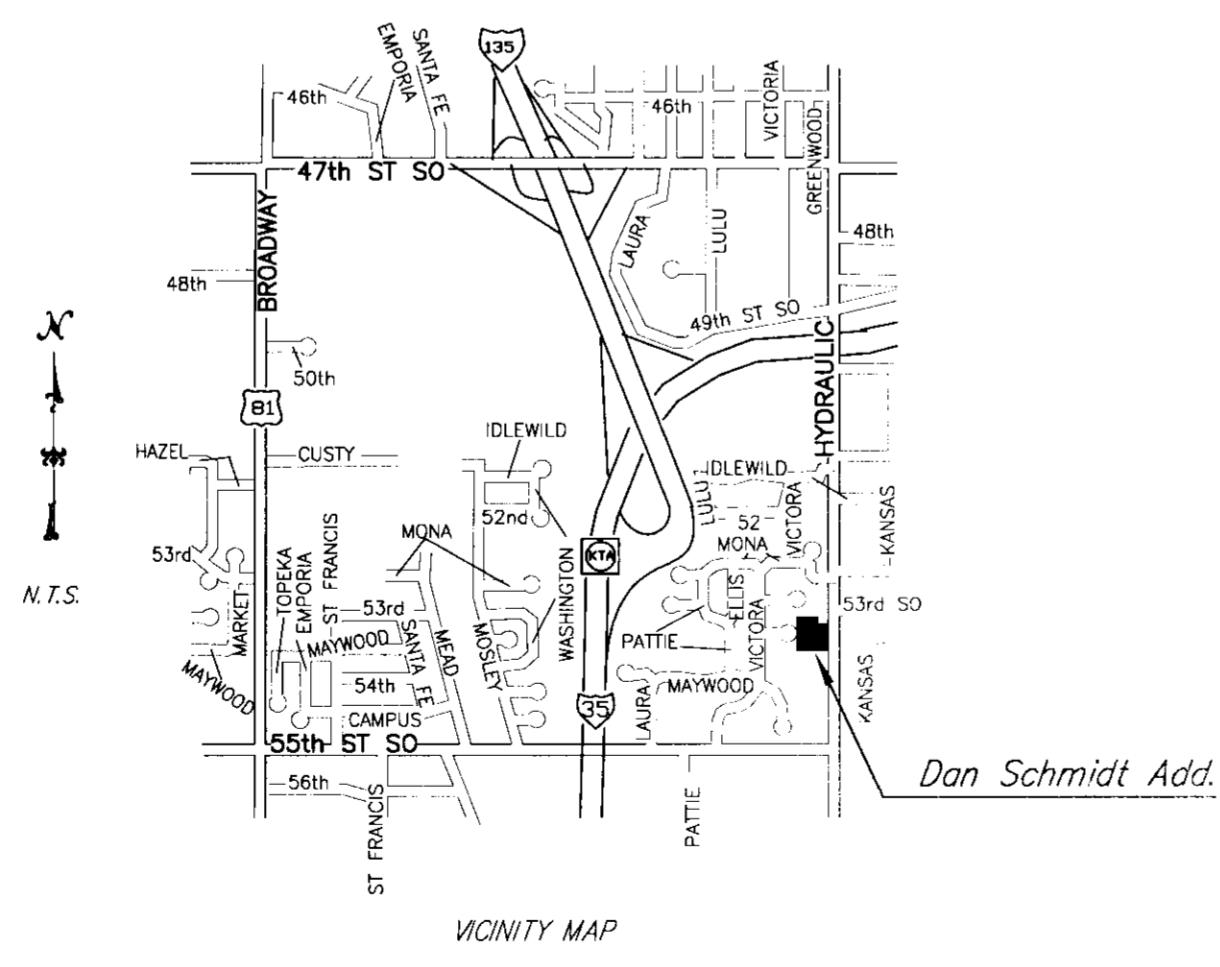
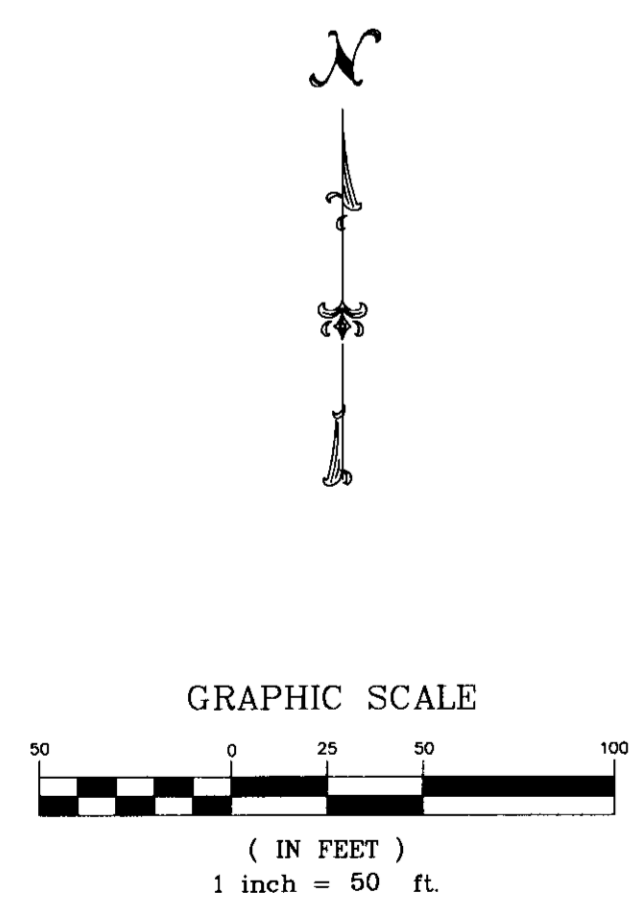
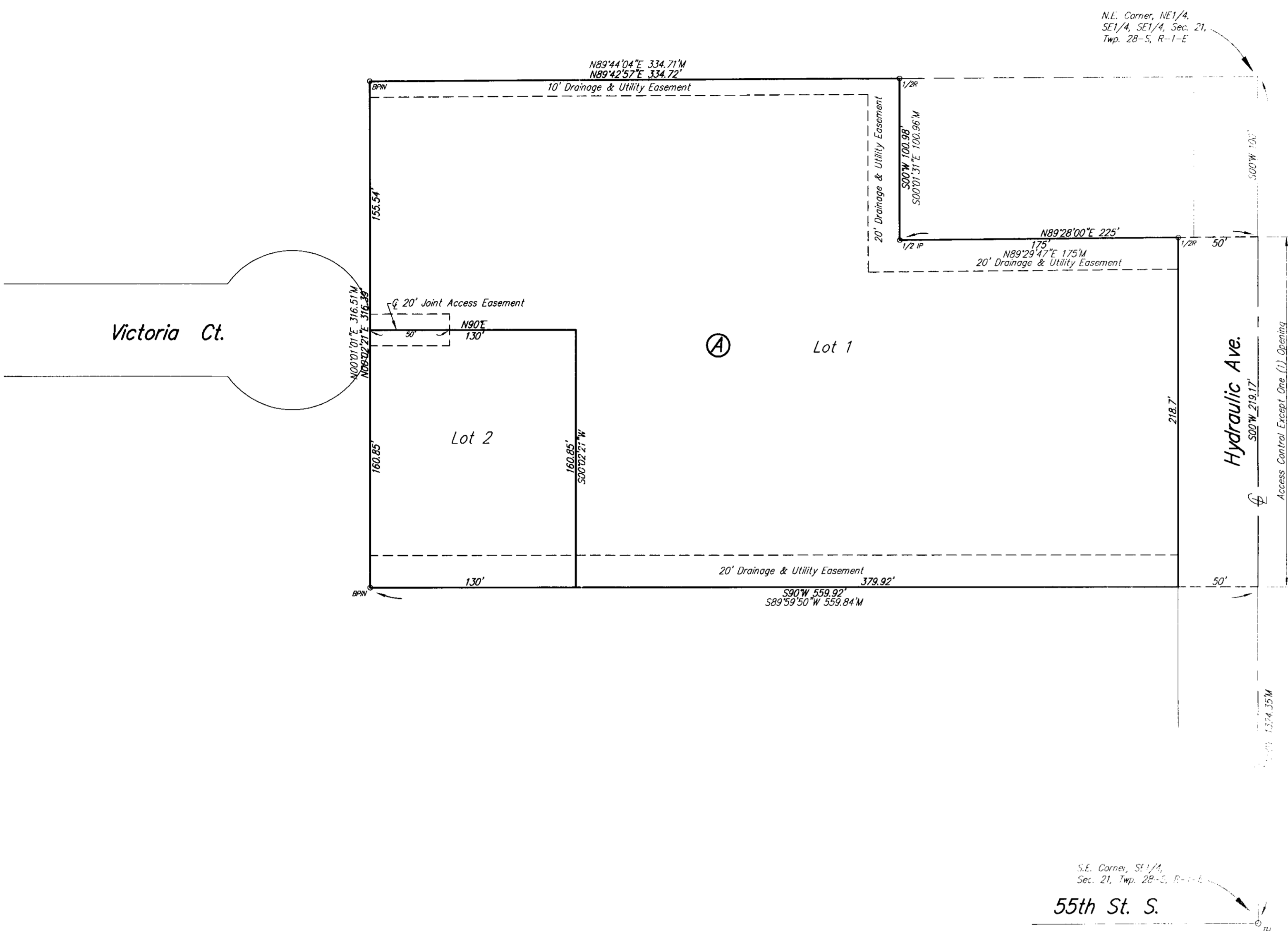


# DAN SCHMIDT ADDITION

## WICHITA, SEDGWICK COUNTY, KANSAS



State of Kansas) SS  
Sedgwick County)

We, Savoy Company, P.A., Surveyors in aforesaid county and state do hereby certify that, under the supervision of the undersigned, we have surveyed and platted "DAN SCHMIDT ADDITION", Wichita, Sedgwick County, Kansas and that the accompanying plat is a true and correct exhibit of the property surveyed, described as:

That part of the SE1/4 of the SE1/4 of Sec. 21, Twp. 28-S, R-1-E of the 6th P.M., Sedgwick County, Kansas described as: Commencing at the N.E. Corner of the SE1/4 of the SE1/4 of said Sec. 21; thence south, along the east line of said SE1/4, 100.00 feet for a point of beginning; thence right at an angle of 89°28', 225.00 feet; thence right at an angle of 90°32', 100.98 feet more or less to a point on the north line of the SE1/4 of the SE1/4 of said Sec. 21; thence west along said north line 334.78 feet more or less to a point 100.00 feet east of the N.W. Corner of the NE1/4 of the SE1/4 of the SE1/4 of said Sec. 21; thence south parallel with and 100.00 feet east of the west line of the NE1/4 of the SE1/4 of said Sec. 21, 316.39 feet; thence east deflecting left 90°02'21", 559.92 feet more or less to a point on the east line of the SE1/4 of said Sec. 21; thence north 219.17 feet to the point of beginning, subject to road right-of-way over the east 50.00 feet thereof.

All Public easements and dedications being vacated by virtue of K.S.A. 12-512(b).

Savoy Company, P.A.

Date \_\_\_\_\_

\_\_\_\_\_  
Mark A. Savoy RLS #788  
Surveyor

Know all men by these presents that We, the undersigned, have caused the land described in the surveyors certificate to be platted into Lots, a Block and Street to be known as "DAN SCHMIDT ADDITION", Wichita, Sedgwick County, Kansas. A drainage plan has been developed for this plat and all drainage easements, rights-of-way, or reserves shall remain at established grades, or as modified with the approval of the City Engineer, and unobstructed to allow for the conveyance of stormwater. Access Control is hereby granted to the appropriate governing body as indicated on the face of the plat. The drainage and utility easements are hereby granted for the construction and maintenance of all public utilities and for drainage purposes.

\_\_\_\_\_  
Dan B. Schmidt  
\_\_\_\_\_  
Kathy R. Schmidt

State of Kansas) SS  
Sedgwick County)

The foregoing instrument acknowledged before me, this \_\_\_\_\_ day of \_\_\_\_\_, 2009, by Dan B. Schmidt and Kathy R. Schmidt, husband and wife.

\_\_\_\_\_  
Notary Public

My App't. Exp. \_\_\_\_\_

This plat of "DAN SCHMIDT ADDITION", Wichita, Sedgwick County, Kansas, has been submitted to and approved by the Wichita-Sedgwick County Metropolitan Area Planning Commission, Wichita, Kansas.

Dated this \_\_\_\_\_ day of \_\_\_\_\_, 2009.

Wichita-Sedgwick County Metropolitan Area Planning Commission

**OFFICE COPY**  
**DO NOT REMOVE**  
\_\_\_\_\_  
M. S. Mitchel  
Chair  
\_\_\_\_\_  
John L. Schiegel  
Secretary

THIS PLAT APPROVED BY THE SUBMISSION COMMITTEE ON 10/24/09, SUBJECT TO THE CONDITIONS OF APPROVAL SET FORTH IN OUR LETTER DATED \_\_\_\_\_.

This plat approved and all dedications shown hereon, accepted by the City Council of the City of Wichita, Kansas, this \_\_\_\_\_ day of \_\_\_\_\_, 2009.

\_\_\_\_\_  
Carl Brewer  
Mayor  
\_\_\_\_\_  
Karen Sublett  
City Clerk

Reviewed in accordance with K.S.A. 58-2005 on this \_\_\_\_\_ day of \_\_\_\_\_, 2009.

\_\_\_\_\_  
Tricia L. Robello, LS #1246  
Deputy County Surveyor  
Sedgwick County Kansas

Entered on transfer record this \_\_\_\_\_ day of \_\_\_\_\_, 2009.

\_\_\_\_\_  
Dan Brace  
County Clerk

State of Kansas) SS  
Sedgwick County)

This is to certify that this plat has been filed for record in the office of the Register of Deeds, this \_\_\_\_\_ day of \_\_\_\_\_, 2009, at o'clock \_\_\_\_\_ M. and is duly recorded.

\_\_\_\_\_  
Bill Meek  
Register of Deeds  
\_\_\_\_\_  
Tonya Buckingham  
Deputy