

TRUESDELL MIDDLE SCHOOL ADDITION

WICHITA, SEDGWICK COUNTY, KANSAS

Sub 2012-13
FINAL TRACING REC'D 8-6-12

This plat of "TRUESDELL MIDDLE SCHOOL ADDITION", Wichita, Sedgwick County, Kansas has been submitted to and approved by the Wichita-Sedgwick County Metropolitan Area Planning Commission, Wichita, Kansas.
Dated this _____ day of _____, 2012.
Wichita-Sedgwick County Metropolitan Area Planning Commission

State of Kansas) SS We, Baughman Company, P.A., Surveyors in Sedgwick County) and state do hereby certify that we have surveyed and platted "TRUESDELL MIDDLE SCHOOL ADDITION", Wichita, Sedgwick County, Kansas and that the accompanying plat is a true and correct exhibit of the property surveyed, described as follows: A tract beginning at the northwest corner of the Northeast Quarter of Section 6, Township 28 South, Range 1 East of the Sixth Principal Meridian, Sedgwick County, Kansas; thence south, 660 feet; thence east, 400 feet; thence north, 660 feet; thence west, 400 feet to beginning, EXCEPT the west 40 feet for street, and EXCEPT the south 20 feet of the north 50 feet for street, TOGETHER with a tract beginning 400 feet east of the northwest corner of the Northeast Quarter of Section 6, Township 28 South, Range 1 East of the Sixth Principal Meridian, Sedgwick County, Kansas; thence east, 460 feet; thence south, 1,320 feet; thence west, 860 feet; thence north, 660 feet; thence east, 400 feet; thence north 660 feet to beginning, EXCEPT the west 40 feet for street, and EXCEPT the south 20 feet of the north 50 feet for street, and EXCEPT the south 30 feet for street, all being subject to road rights-of-way of record.
Existing public easements and dedications being vacated by virtue of K.S.A. 12-512b.
Baughman Company, P.A.

_____, Chair
Shawn Farney
_____, Secretary
John L. Schlegel

This plat approved and all dedications shown hereon accepted by the City Council of the City of Wichita, Kansas, this _____ day of _____, 2012.

_____, Mayor
Carl Brewer
_____, City Clerk
Karen Sublett

Reviewed in accordance with K.S.A. 58-2005 on this _____ day of _____, 2012.

Know all men by these presents that we, the undersigned, have caused the land in the surveyor's certificate to be platted into a Lot and a Block, to be known as "TRUESDELL MIDDLE SCHOOL ADDITION", Wichita, Sedgwick County, Kansas. The utility easement is hereby granted as indicated for the construction and maintenance of all public utilities. The sidewalk and utility easements are hereby granted as indicated for the construction and maintenance of public sidewalks and for the construction and maintenance of all public utilities. Access controls shall be as depicted on the face of the plat and are hereby granted to the City of Wichita, Kansas. The permitted opening locations shall be as determined by the City Engineer of the City of Wichita, Kansas.

Unified School District No. 259,
Wichita, Sedgwick County, Kansas
Lynn Rogers, President
Lynn Rogers

Entered on transfer record this _____ day of _____, 2012.
_____, County Clerk
Kelly B. Arnold

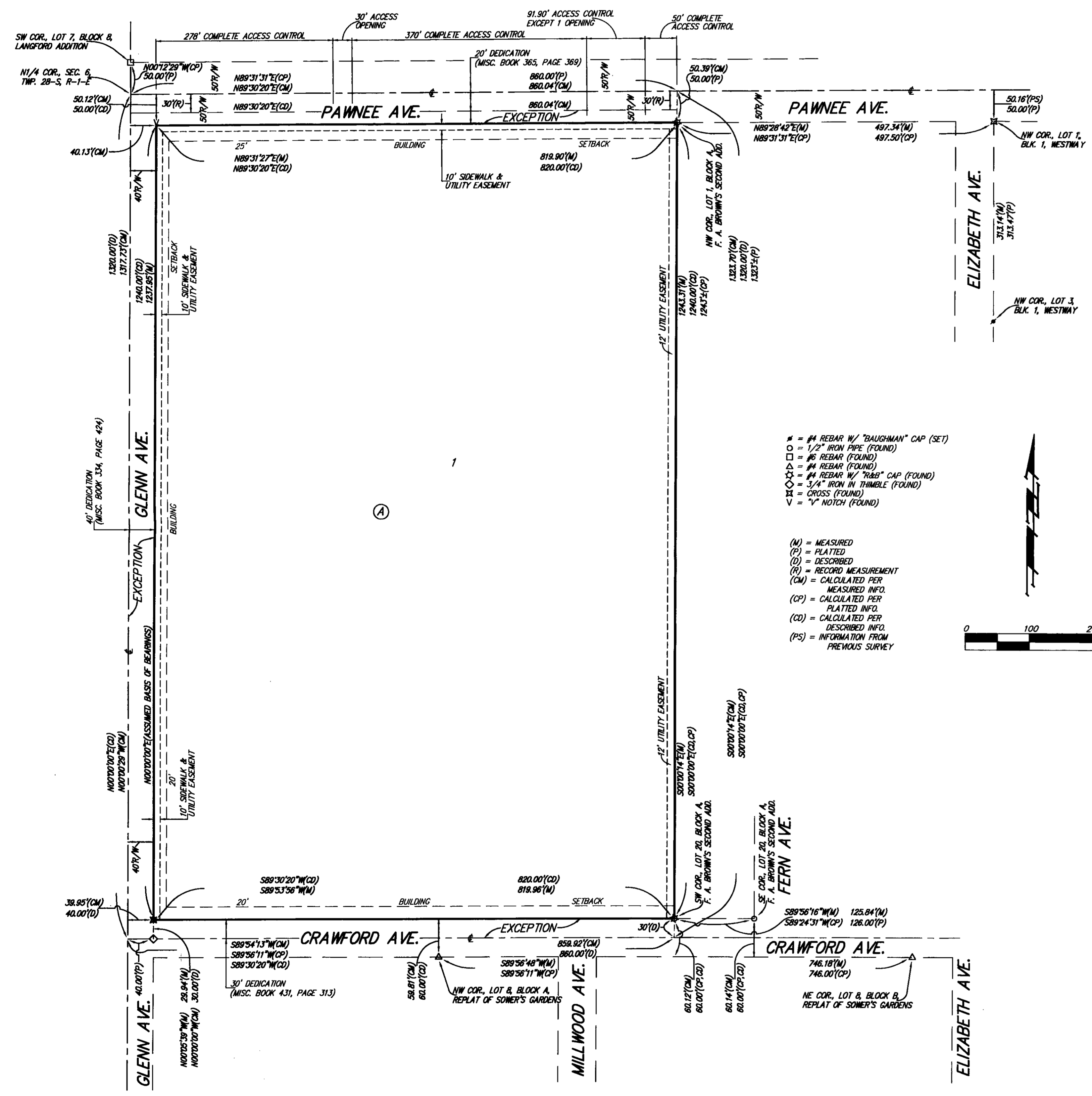
State of Kansas) SS This is to certify that this plat has been filed for record in the office of the Register of Deeds, this _____ day of _____, 2012 at _____ o'clock _____ M; and is duly recorded.

_____, Register of Deeds
Bill Meek
_____, Deputy
Tonya Buckingham

State of Kansas) SS The foregoing instrument acknowledged before me, this 3rd day of August, 2012, by Lynn Rogers, President of the Unified School District No. 259, Wichita, Sedgwick County, Kansas, on behalf of the unified school district.

Mike Willome, Notary Public
MIKE WILLOME

My App't. Exp. 6/9/2015



NOTE:
A drainage plan has been developed for this subdivision and is on file with the City of Wichita, Kansas. Drainage intent shall remain as depicted or as modified with the approval of the City Engineer of the City of Wichita, Kansas. No obstructions which impede the flow of this drainage plan shall be allowed.