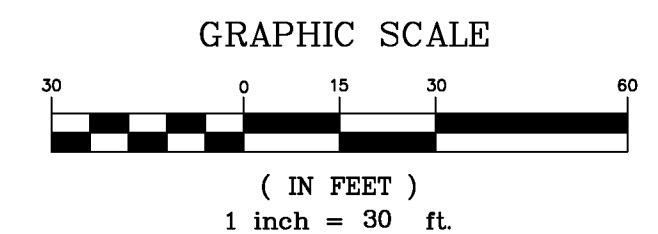
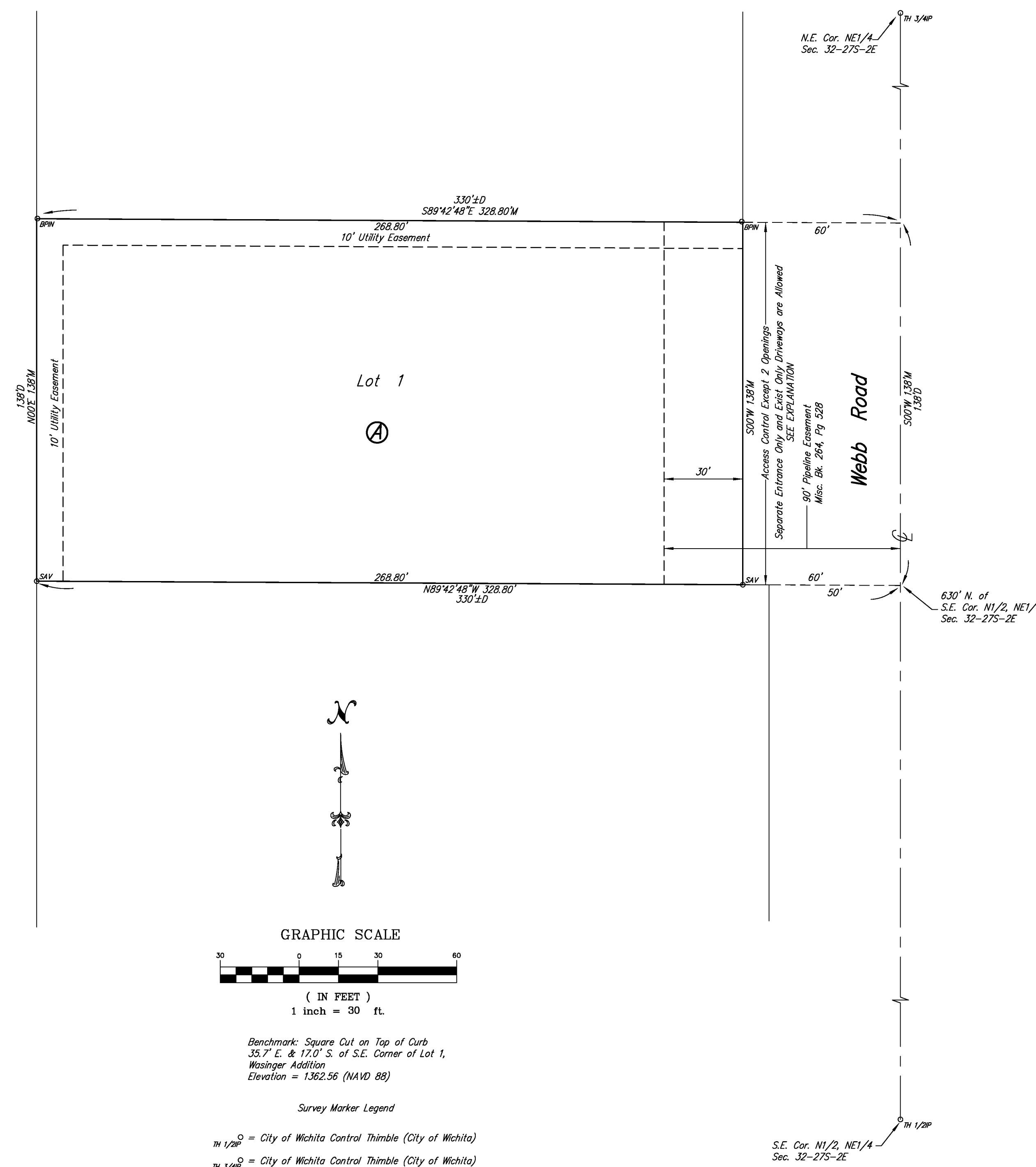


# WASINGER ADDITION

## Wichita, Sedgwick County, Kansas



Benchmark: Square Cut on Top of Curb  
35.7' E. & 17.0' S. of S.E. Corner of Lot 1,  
Wasinger Addition  
Elevation = 1362.56 (NAVD 88)

Survey Marker Legend

- TH 1/2" = City of Wichita Control Thimble (City of Wichita)
- TH 3/4" = City of Wichita Control Thimble (City of Wichita)
- 1/2" = 1/2" Rebar (Found Origin Unknown)
- SPW = 1/2" Rebar w/Baughman Cap (Found)
- SA = 1/2" Rebar w/Savoy Cap (Set)

EXPLANATION OF THE ACCESS CONTROL  
ACCESS CONTROL EXCEPT TWO OPENINGS  
SEPARATE ENTRANCE ONLY AND EXIT ONLY DRIVEWAYS  
ARE ALLOWED, PROVIDED HOWEVER THAT THERE ARE  
DOUBLE "DO NOT ENTER" SIGNS AT THE EXIT AND  
DOUBLE "ONE-WAY" SIGNS AT THE ENTRANCE AND  
THE EXIT DRIVEWAY: TWO ONE-WAY SIGNS ON EACH  
SIDE OF EACH DRIVEWAY AND TWO "DO NOT ENTER"  
SIGNS ON THE EXIT DRIVEWAY.

State of Kansas) SS  
Sedgwick County)

We, Savoy Company, P.A., Surveyors in aforesaid county and state do hereby certify that, under the supervision of the undersigned, we have surveyed and platted "Wasinger Addition", Wichita, Sedgwick County, Kansas and that the accompanying plat is a true and correct exhibit of the property surveyed, described as:

Beginning 640 feet North of the S.E. corner of the N1/2 of the NE1/4 of Sec. 32, Twp. 27-S, R-2-E of the 6th P.M.; thence West, 330 feet more or less to the West line of the East 10 acres of the N1/2 of the NE1/4 of said Sec. 32; thence North 128 feet; thence East, 330 feet more or less to the East line of said NE1/4; thence South, 128 feet to the place of beginning, Sedgwick County, Kansas, AND

A tract described as beginning at a point on the East line of the NE1/4 of Sec. 32, Twp. 27-S, R-2-E of the 6th P.M., Sedgwick County, Kansas, said point being 630 feet North of the S.e. Corner of the N1/2 of said NE1/4; thence West, 330 feet more or less to the West line of the East 10 acres of the N1/2 of said NE1/4; thence North, along the West line of said East 10 acres, 10 feet; thence East, 330 feet more or less to a point on the East line of said NE1/4; thence South, 10 feet to the point of beginning.

All Public easements and dedications being vacated by virtue of K.S.A. 12-512b as amended.

Savoy Company, P.A.  
Date \_\_\_\_\_  
Mark A. Savoy, PS #788 Surveyor

Know all men by these presents that We, the undersigned, have caused the land described in the surveyor's certificate to be platted into a Lot, Block and Street to be known as "Wasinger Addition", Wichita, Sedgwick County, Kansas. The street is hereby dedicated to and for the use of the public. The utility easements are hereby granted for the construction and maintenance of all public utilities. A drainage plan has been developed for this plat and all drainage easements, rights-of-way, or reserves shall remain at established grades, or as modified with the approval of the City Engineer and unobstructed to allow for the conveyance of storm water. Access Controls are hereby granted as shown on the face of the plat.

J. Larry Fugate Revocable Trust dated March 25, 2010  
\_\_\_\_\_  
J. Larry Fugate Trustee

State of Kansas) SS  
Sedgwick County)

The foregoing instrument acknowledged before me, this \_\_\_\_\_ day of \_\_\_\_\_, 2015, by J. Larry Fugate, Trustee of the J. Larry Fugate Revocable Trust dated March 25, 2010, on behalf of the Trust.

\_\_\_\_\_  
Notary Public  
My App't. Exp. \_\_\_\_\_

This plat of "Wasinger Addition", Wichita, Sedgwick County, Kansas, has been submitted to and approved by the Wichita-Sedgwick County Metropolitan Area Planning Commission, Wichita, Sedgwick County, Kansas.

Dated this \_\_\_\_\_ day of \_\_\_\_\_, 2015.  
Wichita-Sedgwick County Metropolitan Area Planning Commission

\_\_\_\_\_  
Matthew J. Goolsby Chairman  
\_\_\_\_\_  
John L. Schlegel Secretary

This plat approved and all dedications shown hereon, accepted by the City Council of the City of Wichita, Kansas, this \_\_\_\_\_ day of \_\_\_\_\_, 2015.

\_\_\_\_\_  
Jeff Longwell Mayor  
\_\_\_\_\_  
Karen Sublett City Clerk

Reviewed in accordance with K.S.A. 58-2005 on this \_\_\_\_\_ day of \_\_\_\_\_, 2015.

\_\_\_\_\_  
Tricia L. Robello, PS #1246 Deputy County Surveyor  
Sedgwick County Kansas

Entered on transfer record this \_\_\_\_\_ day of \_\_\_\_\_, 2015.

\_\_\_\_\_  
Kelly B. Arnold County Clerk

State of Kansas) SS  
Sedgwick County)

This is to certify that this plat has been filed for record in the office of the Register of Deeds, this \_\_\_\_\_ day of \_\_\_\_\_, 2015, at \_\_\_\_\_ o'clock \_\_\_\_\_ M.; and is duly recorded.

\_\_\_\_\_  
Bill Meek Register of Deeds  
\_\_\_\_\_  
Tonya Buckingham Deputy