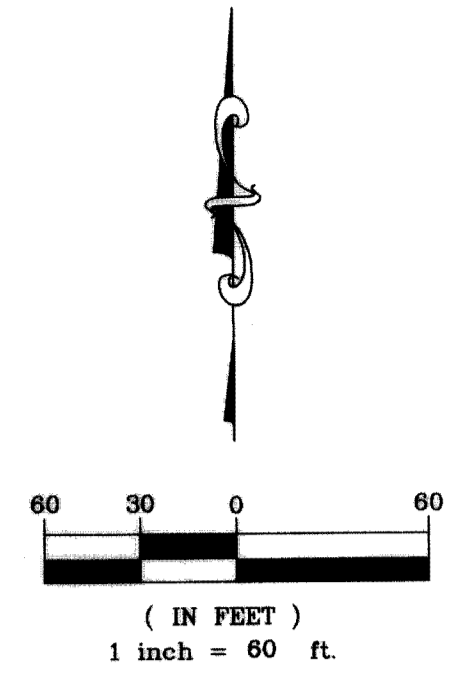
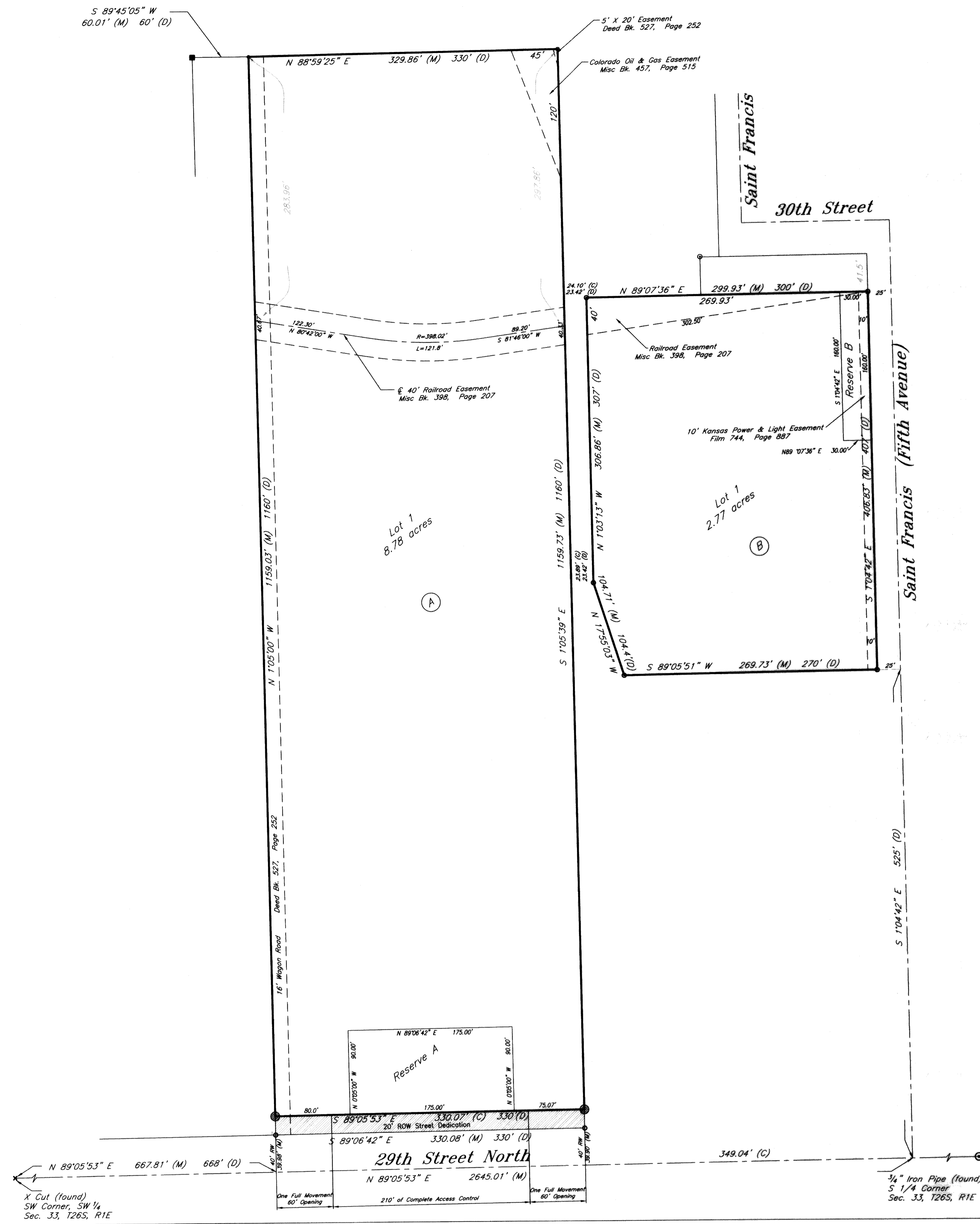


Flint Hills Materials Addition Wichita, Sedgwick County, Kansas

Part of the SW 1/4, Section 33, Township 26 South, Range 1 East of the 6th. P.M.



- LEGEND**
- D Deeded
 - M Measured
 - C Calculated
 - 3/8" Steel Bar (found)
 - 1/2" Rebar (found) RB
 - ⊙ 3/4" Iron Pipe (found)
 - 1/2" Rebar (found) Baughman
 - 3/8" Rebar (set) KEMPA

State of Kansas }
County of Sedgwick } SS

I, Bradley C. Ward, a professional land surveyor of the State of Kansas, do hereby certify that the following described tract of land was surveyed on the 25th day of February, 2016, and the accompanying final plat prepared and that all the monuments shown herein actually exist and their positions are correctly shown to the best of my knowledge and belief.

LEGAL DESCRIPTION

A tract of land generally located in the Southwest 1/4 of the Section 33, Township 26 South, Range 1 East, of the Sixth Principal Meridian, Sedgwick County, Kansas being more particularly described as:

Parcel 1
Commencing at a point 668 feet east of the Southwest corner of the Southwest Quarter of Section 33, Township 26 South, Range 1 East of the Sixth Principal Meridian, Sedgwick County, Kansas; thence north on the center of said Fifth Avenue, 407 feet; thence south parallel with the South line of said Quarter Section, 325 feet; thence south parallel with said center line of said Fifth Avenue, 407 feet; thence east 325 feet to the place of beginning, EXCEPT a triangular tract described as commencing at the Southwest corner of the above described tract; thence east 30 feet along the South line of said tract, thence in a northwesterly direction to a point on the West line of said tract, 100 feet directly north of the point of beginning; thence south 100 feet on and along said West line of said tract to the point of beginning, and EXCEPT the east 25 feet thereof for street.

Parcel 2:
Beginning at a point in the center of Fifth Avenue, 1346.42 feet east and 525 feet north of the Southwest corner of the Southwest Quarter of Section 33, Township 26 South, Range 1 East of the Sixth Principal Meridian, Sedgwick County, Kansas; thence north on the center of said Fifth Avenue, 407 feet; thence west parallel with the South line of said Quarter Section, 325 feet; thence south parallel with said center line of said Fifth Avenue, 407 feet; thence east 325 feet to the place of beginning, EXCEPT a triangular tract described as commencing at the Southwest corner of the above described tract; thence east 30 feet along the South line of said tract, thence in a northwesterly direction to a point on the West line of said tract, 100 feet directly north of the point of beginning; thence south 100 feet on and along said West line of said tract to the point of beginning, and EXCEPT the east 25 feet thereof for street.

All easements and rights-of-way within said tract are hereby vacated by virtue of KSA 12-512b as amended.

Bradley C. Ward, P.L.S. #920

State of Kansas }
County of Sedgwick } SS

Know all men by these presents, that we, the undersigned, have caused the land described in the surveyor's certificate to be platted into Lots, Blocks, Streets and Reserves to be known as Flint Hills Materials Addition, Wichita, Sedgwick County, Kansas. Any street dedications shown are dedicated to and for the use of the public. Any drainage and utility easements are hereby granted as indicated for drainage purposes and for the construction and maintenance of all public utilities. Utility easements are hereby granted as indicated for the construction and maintenance of all public utilities. No signs, light poles, private drainage systems, masonry trash enclosures or other structures shall be located within public utility easements. A drainage plan has been developed for the plat and that all drainage easements, rights-of-way, or reserves shall remain at established grades or as modified with the approval of the applicable City or County Engineer, and unobstructed to allow for the conveyance of stormwater. FEMA floodplain and regulatory floodway boundaries are subject to periodic change and such change may affect the intended land use within the subdivision. And further that the land contained herein is held and shall be conveyed subject to any applicable restrictions, reservations and covenants now on file or hereafter filed in the Office of the Register of Deeds of Sedgwick County, Kansas. All abutter's right of access to and from E. 29th Street N. is hereby granted to the appropriate governing body as shown on the plat. Reserves A and B are hereby platted for drainage, stormwater detention, landscaping, signage, and utilities confined to easements. Reserves shall be owned and maintained by the Owner.

By: Chad Bledsoe
Flint Hills Materials LLC
Chad Bledsoe, Manager

State of Kansas }
County of Sedgwick } SS

This instrument was acknowledged before me on this 23rd day of March, 2016, by Flint Hills Material LLC, Chad Bledsoe, Manager.
Chad Bledsoe
Nary Public
My Commission Expires: 11-18-17



State of Kansas }
City of Wichita } SS

This plat of Flint Hills Materials Addition, Wichita, Sedgwick County, Kansas, has been submitted to and approved by the Wichita-Sedgwick County Metropolitan Area Planning Commission, Wichita, Kansas. Dated this 23rd day of March, 2016. Wichita-Sedgwick County Metropolitan Area Planning Commission.

Carol Chapman Neugeb
Carol Chapman Neugeb, Chair
Dale Miller
Dale Miller, Secretary



State of Kansas }
City of Wichita } SS

This plat approved and all dedications shown hereon accepted by the City Council of the City of Wichita, Kansas, this 17th day of April, 2016.

At the Direction of the City Council
Jeff Conroy
Jeff Conroy, Mayor
Karen Sublett
Karen Sublett, City Clerk

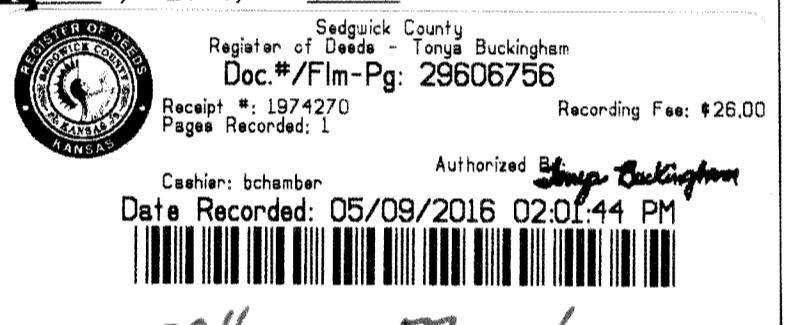
Entered on transfer record this 17th day of May, 2016.
Kelly B. Arnold
Kelly B. Arnold, County Clerk



State of Kansas }
County of Sedgwick } SS

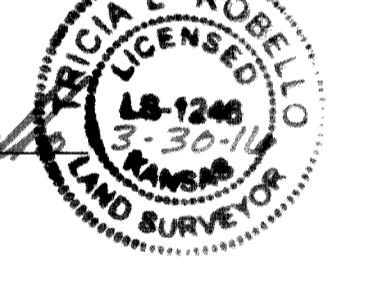
This is to certify that this plat has been filed for record in the Office of the Register of Deeds this 9th day of May, 2016, at 1:01 PM, and is duly recorded.

Tonya Buckingham
Tonya Buckingham, Register of Deeds
Judy Paget
Judy Paget, Deputy



Reviewed in accordance with K.S.A. 58-2005, on this 30th day of March, 2016.

Tricia L. Robello
Tricia L. Robello, L.S. #1246
Deputy County Surveyor
Sedgwick County, Kansas



15192 Asphalt Plat (Final Plat).dwg Prepared: 3-21-16

