

NEWMARKET V ADDITION

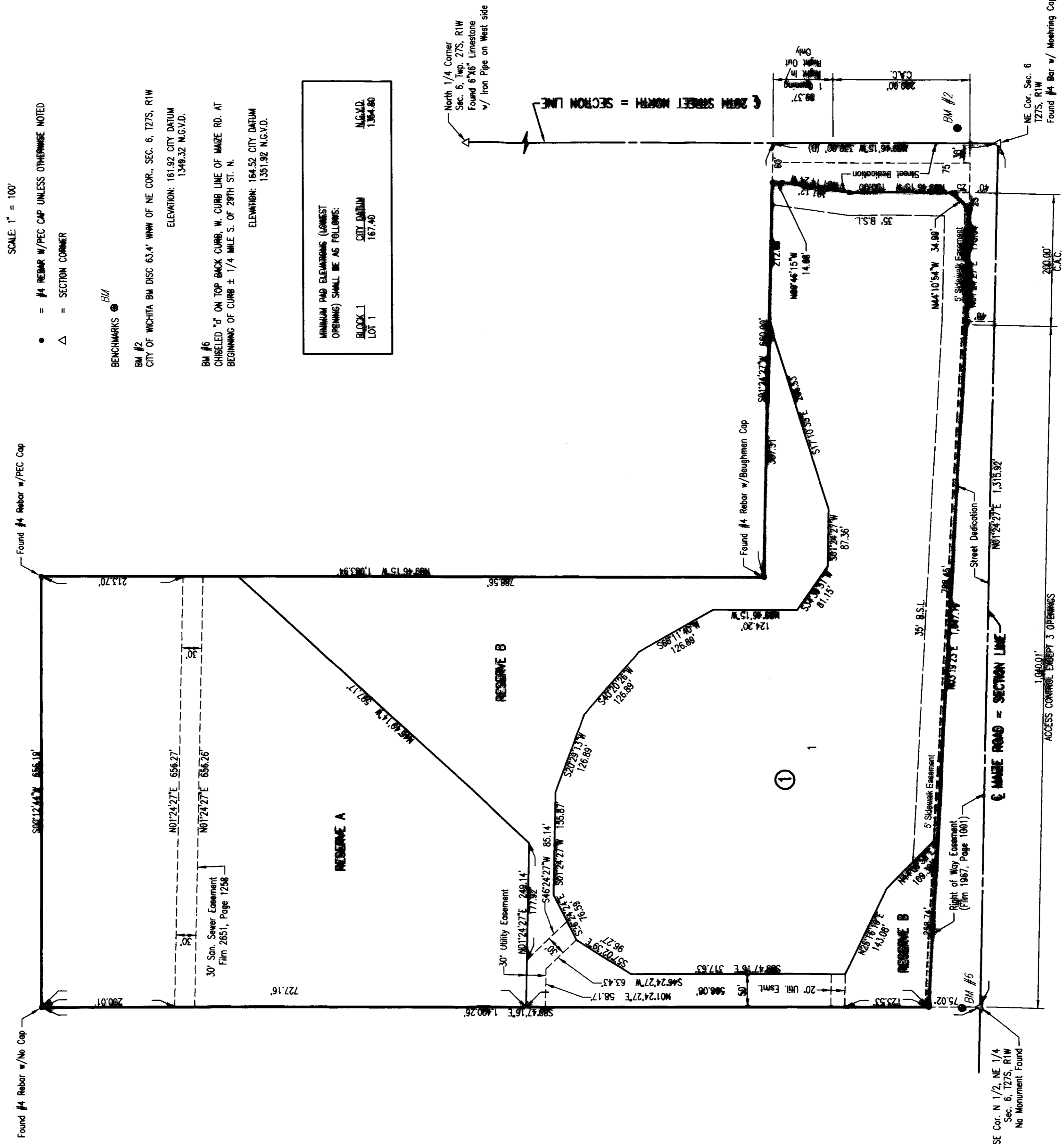
FILE COPY

AN ADDITION TO WICHITA, SEDGWICK COUNTY, KANSAS

REVISED

FINAL TRACING REC'D

John 2007-54



SCALE: 1" = 100'

- = #4 REBAR w/PEC CAP UNLESS OTHERWISE NOTED
- △ = SECTION CORNER

BENCHMARKS

- BM #2
- CITY OF WICHITA BM DISC 63.4' WNW OF NE COR., SEC. 6, T27S, R1W
- ELEVATION: 161.92 CITY DATUM
- 1349.32 N.G.V.D.

- BM #6
- CHIELED "J" ON TOP BACK CURB, W. CURB LINE OF MAIZE RD. AT BEGINNING OF CURB ± 1/4 MILE S. OF 20TH ST. N.
- ELEVATION: 164.52 CITY DATUM
- 1351.92 N.G.V.D.

MINIMUM PAD ELEVATIONS (LOWEST OPENING) SHALL BE AS FOLLOWS:	NGVD
BLOCK 1	157.40
LOT 1	154.80

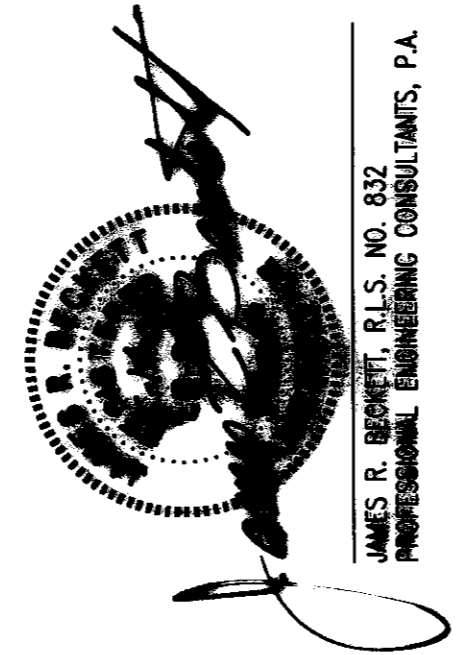
STATE OF KANSAS }
COUNTY OF SEDGWICK }

WE, PROFESSIONAL ENGINEERING CONSULTANTS, P.A., ENGINEERS, AND SURVEYORS IN ADDRESSING STATE AND COUNTY, DO HEREBY CERTIFY THAT OF THIS 14th DAY OF May, 2008, WE HAVE SURVEYED AND PLATTED NEWMARKET V ADDITION, AN ADDITION TO WICHITA, SEDGWICK COUNTY, KANSAS, INTO A LOT, A BLOCK, AND RESERVES THE SAME BEING DESCRIBED AS FOLLOWS:

PART OF THE NORTH 1/2 OF THE N.E. 1/4, SECTION 6, TOWNSHIP 27 SOUTH, RANGE 1 WEST OF THE 6TH P.M. DESCRIBED AS:

BEING AT THE NORTHEAST CORNER OF SECTION 6, TOWNSHIP 27 SOUTH, RANGE 1 WEST OF THE 6TH P.M., SEDGWICK COUNTY, KANSAS, THENCE BEARING N89°46'15"W, ALONG THE NORTH LINE OF SAID N.E. 1/4, A DISTANCE OF 330.00 FEET; THENCE BEARING S07°24'27"W, PARALLEL WITH THE EAST LINE OF SAID N.E. 1/4, A DISTANCE OF 669.00 FEET; THENCE BEARING N89°46'15"W, PARALLEL WITH THE NORTH LINE OF SAID N.E. 1/4, A DISTANCE OF 1,083.94 FEET; THENCE BEARING S00°12'44"W, A DISTANCE OF 666.19 FEET TO THE SOUTH LINE OF THE NORTH 1/2 OF THE N.E. 1/4 AND THE NORTH LINE OF EVERGREEN ADDITION TO WICHITA, SEDGWICK COUNTY, KANSAS; THENCE BEARING S89°47'16"E, ALONG THE NORTH LINE OF EVERGREEN ADDITION, A DISTANCE OF 1,400.26 FEET TO THE S.E. CORNER OF THE NORTH 1/2 OF THE N.E. 1/4, SECTION 6; THENCE BEARING N1°24'27"E, A DISTANCE OF 1,315.92 FEET TO THE POINT OF BEGINNING.

ALL PUBLIC EASEMENTS LYING WITHIN THE ABOVE DESCRIBED TRACT OF LAND ARE HEREBY VACATED AND REPLATED BY VIRTUE OF KSA 12-512(6) AMENDED.



JAMES R. BENNETT, P.E., NO. 832
PROFESSIONAL ENGINEERING CONSULTANTS, P.A.

ALL ABUTTERS RIGHT OF ACCESS TO AND FROM 20TH STREET NORTH OVER AND ACROSS THE NORTH PROPERTY LINE AND TO AND FROM MAIZE ROAD OVER AND ACROSS THE EAST PROPERTY LINE IS HEREBY GRANTED TO THE CITY OF WICHITA, KANSAS, HONORING THAT THESE SHALL BE ACCESS TO 20TH STREET NORTH AT 1-ORINGING AND ACCESS TO MAIZE ROAD AT 3-ORINGING. ALL ACCESS DRAWINGS SHALL BE IN ACCORDANCE WITH MINIMUM SPACING REQUIREMENTS OF THE WICHITA/SEDGWICK COUNTY ACCESS MANAGEMENT STANDARDS.

THE STREET DEDICATION ALONG THE NORTH AND EAST PROPERTY LINES ARE HEREBY DEDICATED TO AND FOR THE USE OF THE PUBLIC.

EASEMENTS FOR THE CONSTRUCTION AND MAINTENANCE OF PUBLIC UTILITIES ARE HEREBY GRANTED.

A DRAINAGE PLAN HAS BEEN APPROVED FOR THIS PLAT. ALL DRAINAGE EASEMENTS, RIGHTS-OF-WAY OR RESERVES SHALL REMAIN AT ESTABLISHED GRADES AND UNMODIFIED TO ALLOW FOR THE COMPLETION OF STORM WATER, UNLESS MODIFIED WITH THE APPROVAL OF THE CITY ENGINEER.

RESERVE "A" IS HEREBY PLATED FOR DRAINAGE DETENTION, LANDSCAPING, SIDEWALKS, AND UTILITIES CONFINED TO EASEMENTS. RESERVE "B" IS HEREBY PLATED AS A WETLAND FOR DRAINAGE AND UTILITIES CONFINED TO EASEMENTS. RESERVES "A" & "B" SHALL BE OWNED AND MAINTAINED BY AN OWNER'S ASSOCIATION TO BE FORMED WITHIN NEWMARKET V ADDITION.

FEMA FLOOD PLAIN AND REGULATORY FLOODWAY DRAINAGES ARE SUBJECT TO PERMANENT CHANGE, AND SUCH CHANGE MAY AFFECT THE APPROVED LAND USE WITHIN THE SUBDIVISION.

KNOW ALL MEN BY THESE PRESENTS THAT WE, THE UNDERSIGNED PROPERTY OWNERS OF THE LAND AS ABOVE SET FORTH IN THE SUBDIVISION CERTIFICATE, HAVE CAUSED THE LAND TO BE SURVEYED AND PLATTED INTO A LOT, A BLOCK, AND RESERVES THE SAME TO BE KNOWN AS NEWMARKET V ADDITION, AN ADDITION TO WICHITA, SEDGWICK COUNTY, KANSAS.

OWNERS:
NEWMARKET V, LLC, A KANSAS LIMITED LIABILITY COMPANY

John Jones
JOHN JONES, VICE PRESIDENT

STATE OF KANSAS }
COUNTY OF SEDGWICK }

THIS INSTRUMENT WAS ACKNOWLEDGED BEFORE ME ON THIS 14th DAY OF May, 2008, BY JERRY JONES, VICE PRESIDENT OF NEWMARKET V, LLC,

A KANSAS LIMITED LIABILITY COMPANY

John Jones
JOHN JONES, VICE PRESIDENT

MY APPOINTMENT EXPIRES: December 14, 2008

SARAH E. HATTRUP
Notary Public - State of Kansas
My Comm. Expires 12/14/08

WE, INTEREST BANK, N.A., HOLDER OF A MORTGAGE ON THE ABOVE DESCRIBED PROPERTY, DO HEREBY CONSENT TO THE PLATING OF NEWMARKET V ADDITION, AN ADDITION TO WICHITA, SEDGWICK COUNTY, KANSAS.

Robert G. Eastwood
ROBERT G. EASTWOOD, SENIOR VICE PRESIDENT

STATE OF KANSAS }
COUNTY OF SEDGWICK }

THIS INSTRUMENT WAS ACKNOWLEDGED BEFORE ME ON THIS 14th DAY OF May, 2008, BY ROBERT G. EASTWOOD, SENIOR VICE PRESIDENT OF INTEREST BANK.

Robert G. Eastwood
ROBERT G. EASTWOOD, SENIOR VICE PRESIDENT

MY APPOINTMENT EXPIRES: 2/19/11

THIS PLAT IS APPROVED AND ALL DEDICATIONS SHOWN HEREON, IF ANY ARE ACCEPTED BY THE CITY COUNCIL OF THE CITY OF WICHITA, KANSAS, THIS

DAY OF May, 2008.

CARL BRUNNER }
MAYOR

KARIN SIBLETT }
CITY CLERK

STATE OF KANSAS }
COUNTY OF SEDGWICK }

THIS PLAT OF NEWMARKET V ADDITION, AN ADDITION TO WICHITA, SEDGWICK COUNTY, KANSAS, HAS BEEN SUBMITTED TO AND APPROVED BY THE WICHITA-SEDGWICK COUNTY METROPOLITAN AREA PLANNING COMMISSION, WICHITA, KANSAS.

DATED THIS 14th DAY OF May, 2008.



WICHITA-SEDGWICK COUNTY METROPOLITAN AREA PLANNING COMMISSION

John L. Schaefer
JOHN L. SCHAEFER, CHAIRMAN

John Schaefer
JOHN L. SCHAEFER, SECRETARY

REVIEWED IN ACCORDANCE WITH K.S.A. 58-2005 ON THIS 14th DAY

OF May, 2008.



Trina L. Ringold
TRINA L. RINGOLD, CLERK
SEDGWICK COUNTY SHERIFF
SEDGWICK COUNTY, KANSAS

ENTERED ON TRANSFER RECORD THIS 14th DAY OF May, 2008.

DON BRIDGE }
COUNTY CLERK

THIS IS TO CERTIFY THAT THIS INSTRUMENT WAS FILED FOR RECORD IN THE

REGISTER OF DEEDS OFFICE AT Wichita, Kansas, ON THE 14th DAY

OF May, 2008.

BILL MEEK }
REGISTER OF DEEDS

TONYA BUCKINGHAM }
DEPUTY

SE Cor. N 1/2, NE 1/4
Sec. 6, T27S, R1W
No Monument Found

ACCESS CONTROL EMBEPT 3 OPENINGS