

1-29-09  
Jub 2008-67

# Trans-Net Addition WICHITA, SEDGWICK COUNTY, KANSAS

Part of the Northeast 1/4, Section 5, Township 27 South, Range 1 West of the 6th. P.M.

State of Kansas }  
County of Sedgwick } ss

State of Kansas }  
City of Wichita } ss

I, Randall L. Elkins, a licensed land surveyor of the State of Kansas, do hereby certify that the following described tract of land was surveyed on the 11th day of September, 2008 and the accompanying final plat prepared and that all the monuments shown herein actually exist and their positions are correctly shown to the best of my knowledge and belief:

This plat of Transnet Addition, Wichita, Sedgwick County, Kansas, has been submitted to and approved by the Wichita-Sedgwick County Metropolitan Area Planning Commission, Wichita, Kansas. Dated this \_\_\_\_\_ day of \_\_\_\_\_, 2008. Wichita-Sedgwick County Metropolitan Area Planning Commission.

Beginning 1042.00 feet South of the Northeast Corner of the Northeast 1/4 of Section 5, Township 27 South, Range 1 West of the 6th P.M.; thence West 317.00 feet; thence South 275.00 feet; thence East 317.00 feet; thence North to point of beginning, EXCEPT for Right-of-Way on Tyler Road.

\_\_\_\_\_  
Darrell Downing, Chairman

\_\_\_\_\_  
John L. Schlegel, Secretary

All easements and rights-of-way within said lots are hereby vacated by virtue of KSA 12-512(b) amended.

State of Kansas }  
City of Wichita } ss

This plat approved and all dedications shown hereon accepted by the City Council of the City of Wichita, Kansas, this \_\_\_\_\_ day of \_\_\_\_\_, 2009.

At the Direction of the City Council

\_\_\_\_\_  
Carl Brewer, Mayor

\_\_\_\_\_  
Karen Sublett, City Clerk



\_\_\_\_\_  
Randall L. Elkins, L.S. #1294 Date

Entered on transfer record this \_\_\_\_\_ day of \_\_\_\_\_, 2009.

\_\_\_\_\_  
Kelly B. Arnold, County Clerk

State of Kansas }  
County of Sedgwick } ss

This is to certify that this plat has been filed for record in the Office of the Register of Deeds this \_\_\_\_\_ day of \_\_\_\_\_, 2009, at \_\_\_\_\_ o'clock \_\_\_\_\_ M; and is duly recorded.

\_\_\_\_\_  
Bill Meek, Register of Deeds

\_\_\_\_\_  
Tonya Buckingham, Deputy

Reviewed in accordance with K.S.A. 58-2005 on this 26th day of January, 2009.

\_\_\_\_\_  
Tricia L. Robinson, Deputy County Clerk  
Sedgwick County, Kansas

State of Kansas }  
County of Sedgwick } ss

Know all men by these presents, that we, the undersigned, have caused the land described in the surveyor's certificate to be platted into a Lot and Block to be known as Trans-Net Addition, Wichita, Sedgwick County, Kansas. Any easements are hereby granted as indicated for constructing, maintaining, operating, and repairing public utilities. A drainage plan has been developed for the plat and all drainage easements, rights-of-way, or reserves shall remain as established grades or as modified with the approval of the applicable City or County Engineer, and unabstracted to allow for the conveyance of stormwater. Reserve A shall be owned and maintained by Maize USD 266 for use as a storm water pond. The East 20' feet shall be dedicated for right-of-way to and for the use of the public. And further that the land contained herein is held and shall be conveyed subject to any applicable restrictions, reservations and covenants now on file or hereafter filed in the Office of the Register of Deeds of Sedgwick County, Kansas.

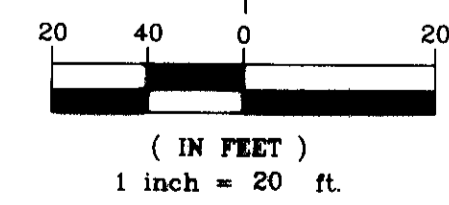
Access Control is hereby granted as follows:  
1. There shall be a maximum of 2 openings on Tyler Road.

By: Milt Pippenger 1/28/09 Date  
Milt Pippenger  
Maize USD 266, Superintendent

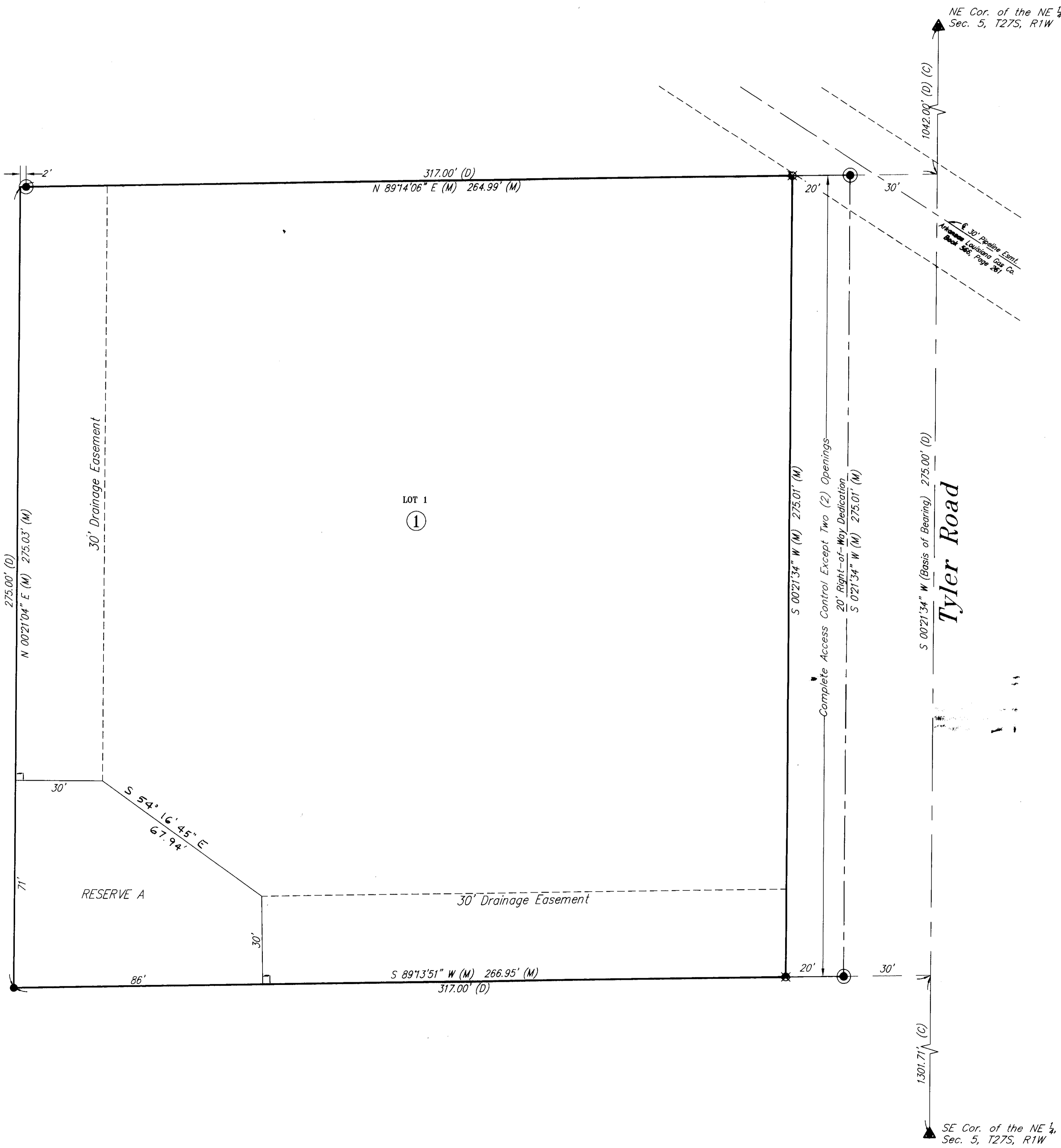
Notary Public State of Kansas  
Merlene Shuster  
My Appl Exp. 12-11-2010

State of Kansas }  
County of Sedgwick } ss  
This instrument was acknowledged before me on this 28th day of January, 2009, by Milt Pippenger, Maize USD 266, Superintendent

Notary Public  
My Commission Expires: 12-11-2010



- LEGEND
- 1" Iron Pin (found)
  - ⊗ 5/8" Rebar (set) RLS #1294
  - ⊙ 1/2" Iron Pin w/Savoy cap (found)
  - ▲ Section Corner (1/2" Iron Pipe found)
  - (P) Platted
  - (D) Deeded
  - (M) Measured



Filename: 081301Transnet Final Plat.dwg Prepared: 1/02/09

516 S. Market, Wichita, KS 67202 316/264-0242