

11/20/25 10:59 AM

J:\PROJECTS\2025\20250814\17TH_SIDEWALK\17TH_SIDEWALK_009266P\GENERAL\TITLE_SHEET\17TH_SIDEWALK_009266P_TITLE_SHEET.DWG

PAVING PLANS FOR

17TH STREET SIDEWALK AT RR CROSSING 009266P

THE CITY OF WICHITA, KANSAS
PAUL GUNZELMAN, P.E. - CITY ENGINEER

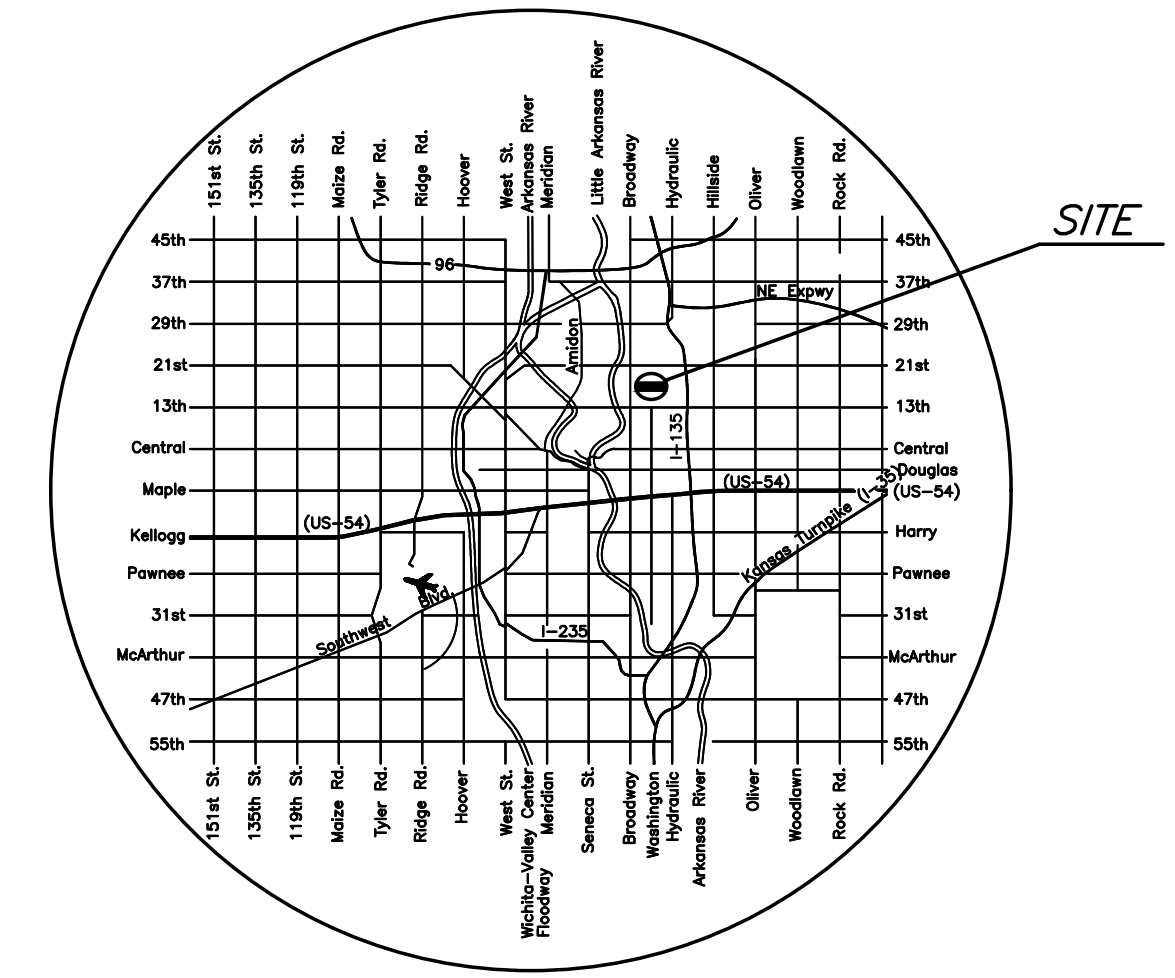
PROJECT NO. 472-2025-086149

ORG CODE 40108723

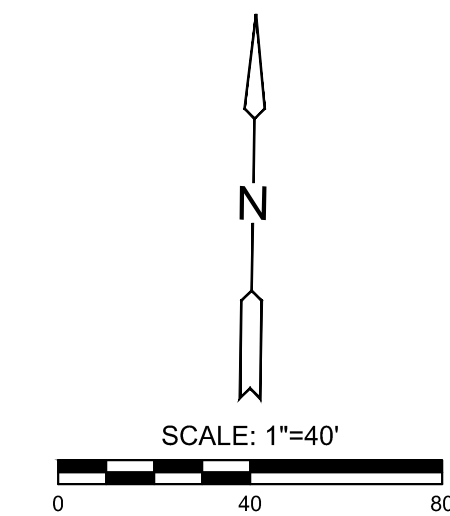
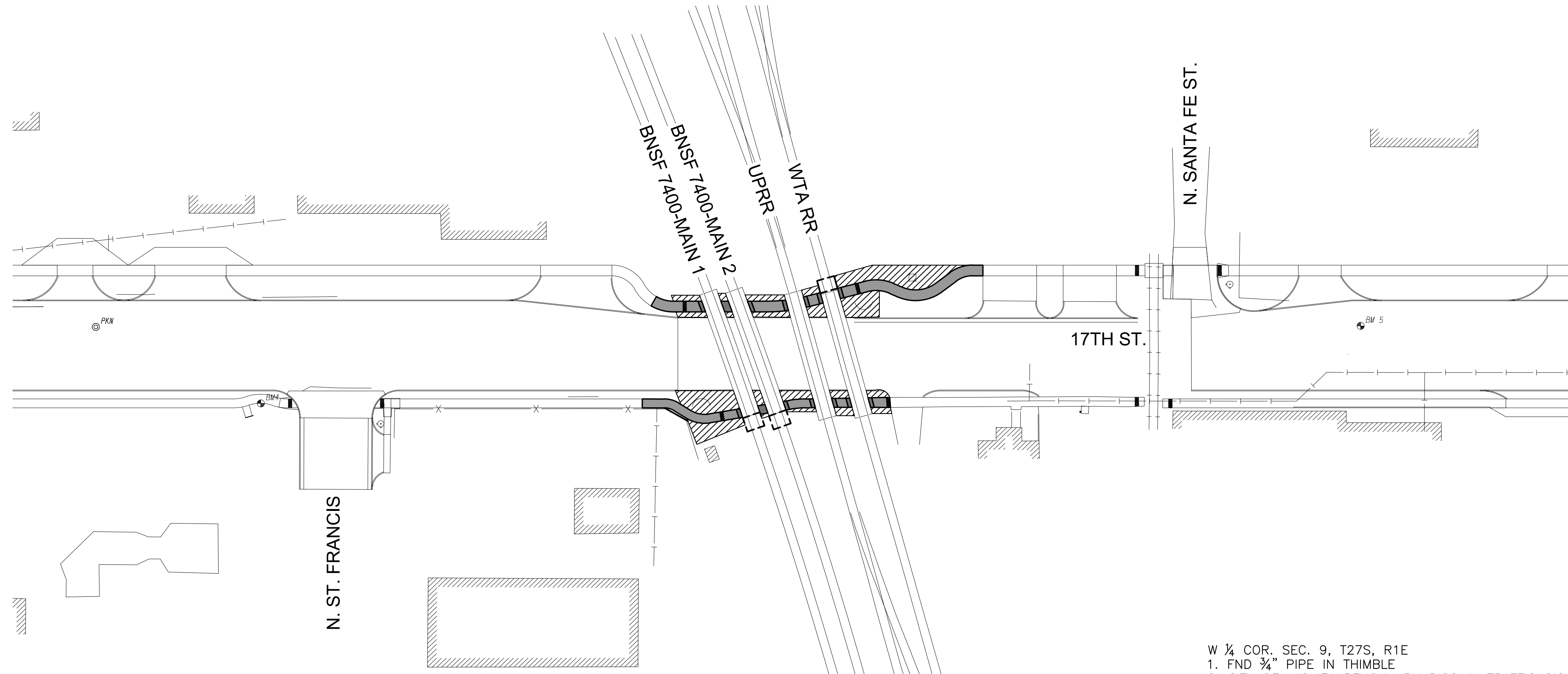
MUNIS NO. E3052

INDEX TO DRAWINGS

SHEET NO.	DESCRIPTION
1	TITLE SHEET
2	GENERAL NOTES
3-4	PAVING PLAN AND DETAILS
5-10	EROSION CONTROL PLAN AND DETAILS
11-16	TRAFFIC CONTROL PLAN AND DETAILS



LOCATION MAP



PROJECT SURVEY CONTROL

NOTE: ALL TIES NOTED MAY NO LONGER EXIST.

DATUM:
THE PROJECT HORIZONTAL DATUM IS BASED ON THE NAD83, KANSAS STATE PLANE COORDINATE SYSTEM, SOUTH ZONE, (US SURVEY FEET DEFINITION), WITH A COMBINED ADJUSTMENT FACTOR (CAF) OF 1.000120014.
ALL COORDINATE AND DIMENSIONS SHOWN ON THESE PLANS ARE MODIFIED TO GROUND VALUES.

THE FOLLOWING EQUATIONS CAN BE USED FOR CONVERSION:
GROUND COORDINATES TO STATE PLANE COORDINATES = GROUND X 1/CAF
STATE PLANE COORDINATES TO GROUND COORDINATES = STATE PLANE X CAF

THE VERTICAL DATUM USED IS NAVD88.

- W ¼ COR. SEC. 9, T27S, R1E
1. FND ¾" PIPE IN THIMBLE
2. CITY OF WICHITA BENCHMARK DISC IN TRAFFIC SIGNAL BASE
3. CHISELED "+" ON SE COR. OF SIDEWALK
4. CHISELED "+" ON NW COR. CONC. SIGN BASE
5. CHISELED "+" ON SW COR. OF CURB INLET
6. IN CENTER OF INTERSECTION OF 17TH ST. N. AND BROADWAY
7. N=1696478.742, E=1649341.575

41.90' NE
39.30' NW
44.59' SW
40.93' SE

- CENTER SEC. COR. 9, T27S, R1E
1. N=1696521.119, E=1651976.886

- E ¼ COR. SEC. 9, T27S, R1E
1. FND 1" PIPE IN THIMBLE
2. CHISELED "+" IN TOP OF CURB AT APPROXIMATELY MID-RADIUS OF CURB RETURN 31.49' NW
3. CHISELED "+" IN TOP OF CURB AT APPROXIMATELY MID-RADIUS OF CURB RETURN 31.36' SW
4. CHISELED "+" IN TOP OF CURB AT APPROXIMATELY MID-RADIUS OF CURB RETURN 31.14' SE
5. PK NAIL IN CENTER OF A STROM WATER SEWER MANHOLE LID 33.31' WNW
6. CENTER OF INTERSECTION OF 17TH ST. N. AND HYDRAULIC
7. N=1696563.509, E=1654617.121



PAVING PLANS FOR
17TH STREET SIDEWALK AT RR CROSSING 009266P
WICHITA, KANSAS

TITLE SHEET

PROJECT NO.
472-2025-086149

SCALE
1"=40'

DRAWN DESIGNED CHECKED
RAM JRA

NO.	REVISION	DATE

SHEET NO.

1 OF 16

©2025 MKEC ENGINEERING, INC. ALL RIGHTS RESERVED WWW.MKEC.COM THESE DRAWINGS AND THEIR CONTENTS, INCLUDING, BUT NOT LIMITED TO, ALL CONCEPTS, DESIGNS, & DETAILS ARE THE EXCLUSIVE PROPERTY OF MKEC ENGINEERING, INC. (MKEC), AND MAY NOT BE USED OR REPRODUCED IN ANY WAY WITHOUT THE EXPRESS CONSENT OF MKEC.