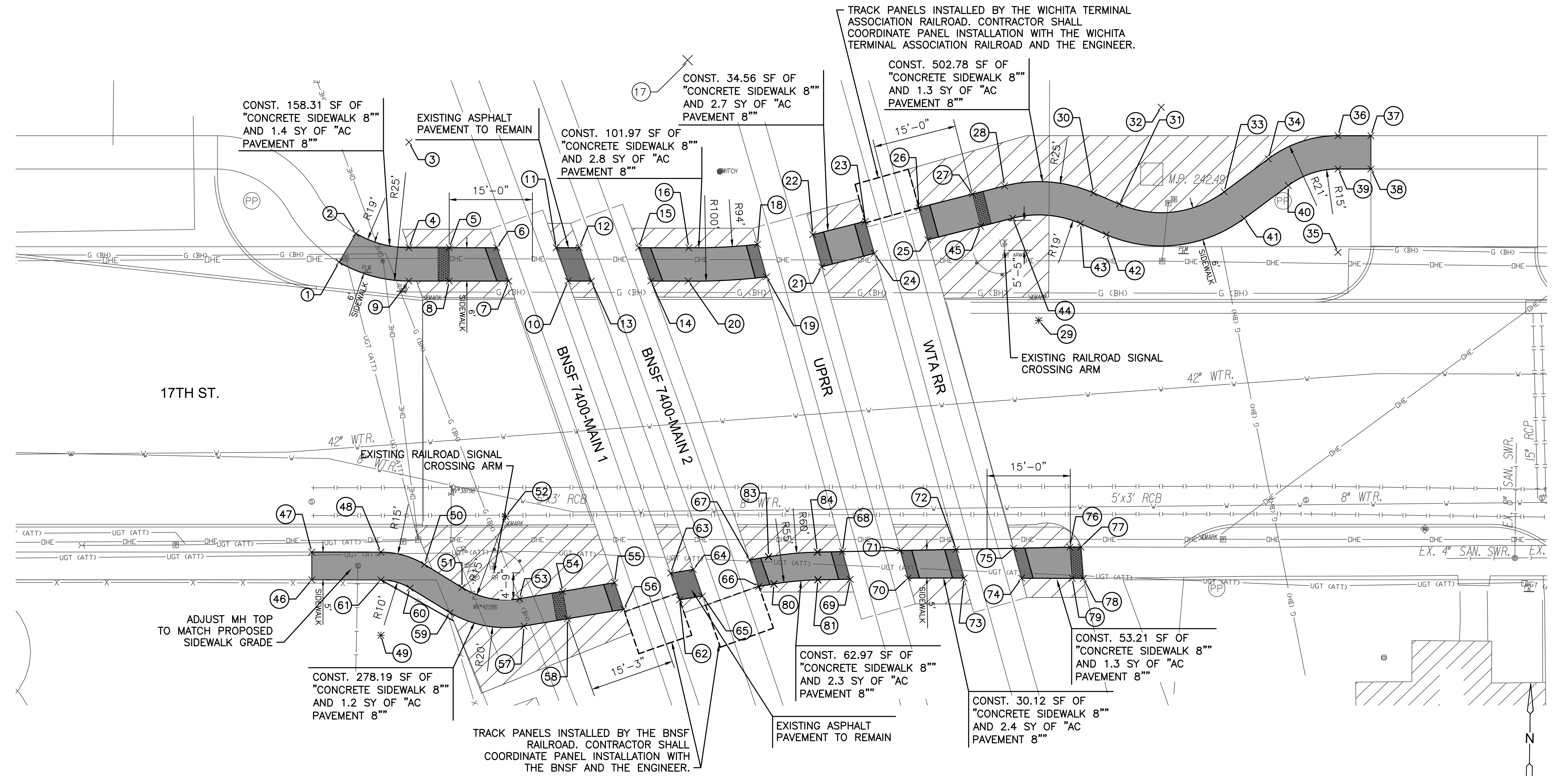


PLOTTED: Friday, March 21, 2025 @ 09:30 AM  
 J:\PROJECTS\2025\202503\_17TH\_STREET\_17TH\_STREET\_SIDWALK\_009266P\_CADD\SHOTS\05\_CIVIL\PAVING\_PLAN.DWG



TRACK PANELS INSTALLED BY THE WICHITA TERMINAL ASSOCIATION RAILROAD. CONTRACTOR SHALL COORDINATE PANEL INSTALLATION WITH THE WICHITA TERMINAL ASSOCIATION RAILROAD AND THE ENGINEER.

CONST. 158.31 SF OF "CONCRETE SIDEWALK 8" AND 1.4 SY OF "AC PAVEMENT 8"

CONST. 101.97 SF OF "CONCRETE SIDEWALK 8" AND 2.8 SY OF "AC PAVEMENT 8"

CONST. 502.78 SF OF "CONCRETE SIDEWALK 8" AND 1.3 SY OF "AC PAVEMENT 8"

CONST. 278.19 SF OF "CONCRETE SIDEWALK 8" AND 1.2 SY OF "AC PAVEMENT 8"

CONST. 62.97 SF OF "CONCRETE SIDEWALK 8" AND 2.3 SY OF "AC PAVEMENT 8"

CONST. 53.21 SF OF "CONCRETE SIDEWALK 8" AND 1.3 SY OF "AC PAVEMENT 8"

CONST. 30.12 SF OF "CONCRETE SIDEWALK 8" AND 2.4 SY OF "AC PAVEMENT 8"

SIDEWALK POINTS			
Point #	Northing	Easting	Desc.
1	1696526.52	1650620.92	SWPC
2	1696531.76	1650623.85	SW PC
3	1696548.34	1650633.13	RP
4	1696529.34	1650633.43	SW PT
5	1696529.45	1650640.70	PAVER
6	1696529.59	1650649.28	SW
7	1696523.63	1650651.54	SW
8	1696523.46	1650640.80	PAVER
9	1696523.34	1650633.53	SW PT
10	1696523.80	1650662.21	SW
11	1696529.76	1650659.97	SW
12	1696529.83	1650664.16	SW
13	1696523.87	1650666.41	SW
14	1696524.04	1650677.14	SW
15	1696530.00	1650674.84	SW
16	1696530.15	1650683.87	SW PC
17	1696624.15	1650683.87	SW RP
18	1696530.97	1650696.25	SW PT

SIDEWALK POINTS			
Point #	Northing	Easting	Desc.
19	1696525.14	1650697.95	SW PT
20	1696524.15	1650683.87	SW PC
21	1696527.11	1650707.89	SW
22	1696532.86	1650706.18	SW
23	1696535.42	1650715.61	SW
24	1696529.66	1650717.31	SW
25	1696532.27	1650726.93	SW
26	1696538.03	1650725.23	SW
27	1696540.64	1650734.85	PAVER
28	1696542.20	1650740.60	SW PC
29	1696518.07	1650747.14	SW RP
30	1696541.19	1650756.66	SW PT
31	1696539.25	1650761.37	SW PC
32	1696556.82	1650768.60	SW RP
33	1696541.78	1650780.20	SW PT
34	1696547.84	1650788.07	SW PC
35	1696531.21	1650800.89	SW RP
36	1696552.21	1650800.55	SW PT

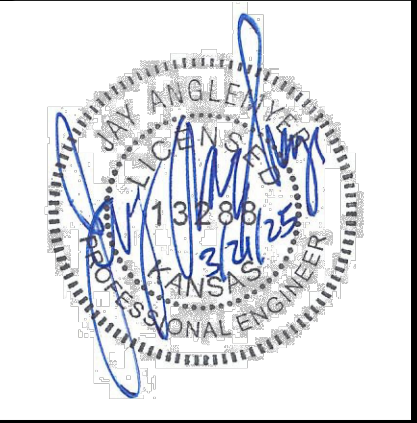
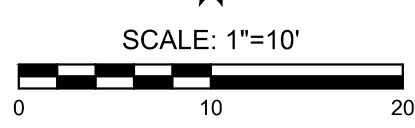
SIDEWALK POINTS			
Point #	Northing	Easting	Desc.
37	1696552.30	1650806.47	SW
38	1696546.30	1650806.57	SW
39	1696546.21	1650800.65	SW PT
40	1696543.09	1650791.73	SW PC
41	1696537.02	1650783.87	SW PT
42	1696533.70	1650759.08	SW PC
43	1696535.64	1650754.38	SW PT
44	1696536.41	1650742.17	SW PC
45	1696534.85	1650736.42	PAVER
46	1696469.25	1650616.89	SW
47	1696474.25	1650616.81	SW
48	1696474.44	1650629.27	SW PC
49	1696459.44	1650629.51	SW RP
50	1696472.34	1650637.16	SW PT
51	1696468.29	1650643.99	SW PC
52	1696481.20	1650651.64	SW RP
53	1696466.45	1650654.37	SW PT
54	1696467.89	1650662.18	PAVER

SIDEWALK POINTS			
Point #	Northing	Easting	Desc.
55	1696469.61	1650671.48	SW
56	1696464.85	1650673.19	SW
57	1696461.53	1650655.28	SW PT
58	1696462.98	1650663.09	PAVER
59	1696463.72	1650641.92	SW PC
60	1696468.04	1650634.61	SW PT
61	1696469.44	1650629.35	SW PC
62	1696466.71	1650683.25	SW
63	1696471.47	1650681.53	SW
64	1696472.23	1650685.61	SW
65	1696467.46	1650687.34	SW
66	1696469.34	1650697.47	SW
67	1696474.10	1650695.73	SW
68	1696475.86	1650712.45	SW
69	1696470.91	1650713.92	SW
70	1696471.28	1650724.34	SW
71	1696476.23	1650722.86	SW
72	1696476.59	1650732.92	SW

SIDEWALK POINTS			
Point #	Northing	Easting	Desc.
73	1696471.45	1650734.44	SW
74	1696471.59	1650744.81	SW
75	1696476.96	1650743.25	SW
76	1696477.32	1650753.41	PAVER
77	1696477.39	1650755.41	SW
78	1696471.74	1650755.94	SW
79	1696471.71	1650753.93	PAVER
80	1696469.84	1650700.19	SW PC
81	1696470.70	1650708.11	SW PT
82	1696415.74	1650710.06	SW RP
83	1696474.73	1650699.14	SW PC
84	1696475.70	1650707.93	SW PT

**LEGEND**

- Crushed Rock Hookup
- Proposed Sidewalk
- 24" Wide Asphalt Strip
- Detectable Warning Paver See Sheet 4
- SW Sidewalk
- PC Point of Curve
- PT Point of Tangent
- RP Radius Point
- PAVER Detectable Warning Paver



PAVING PLANS FOR  
**17TH STREET SIDEWALK AT RR CROSSING 009266P**  
 WICHITA, KANSAS

PAVING PLAN		
PROJECT NO.	472-2025-086149	
SCALE	1"=10'	
DRAWN	DESIGNED	CHECKED
RAM	JRA	
NO.	REVISION	DATE

SHEET NO. 3 OF 16

©2025 MKEC ENGINEERING, INC. ALL RIGHTS RESERVED. WWW.MKEC.COM. THESE DRAWINGS AND THEIR CONTENTS, INCLUDING, BUT NOT LIMITED TO, ALL CONCEPTS, DESIGNS, & DETAILS ARE THE EXCLUSIVE PROPERTY OF MKEC ENGINEERING, INC. (MKEC), AND MAY NOT BE USED OR REPRODUCED IN ANY WAY WITHOUT THE EXPRESS CONSENT OF MKEC.