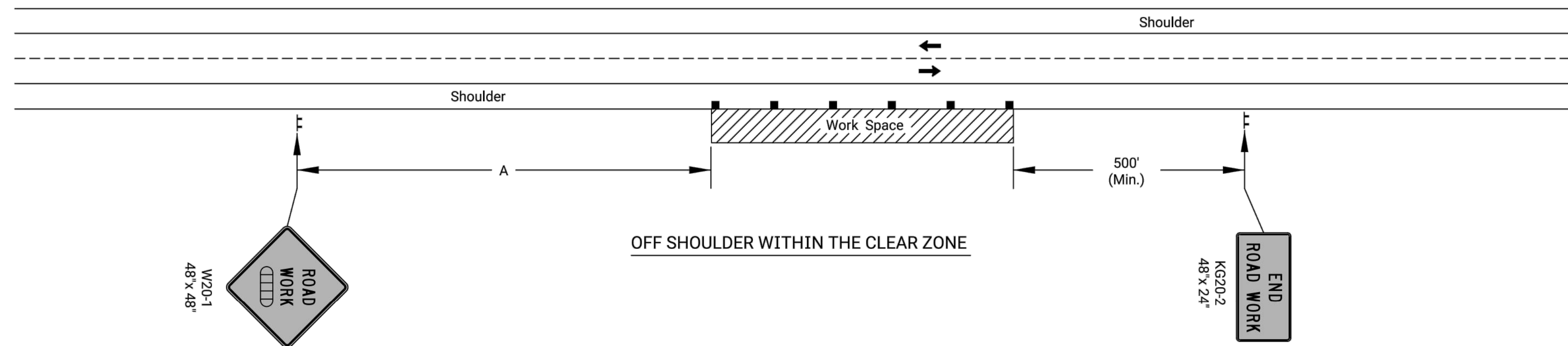


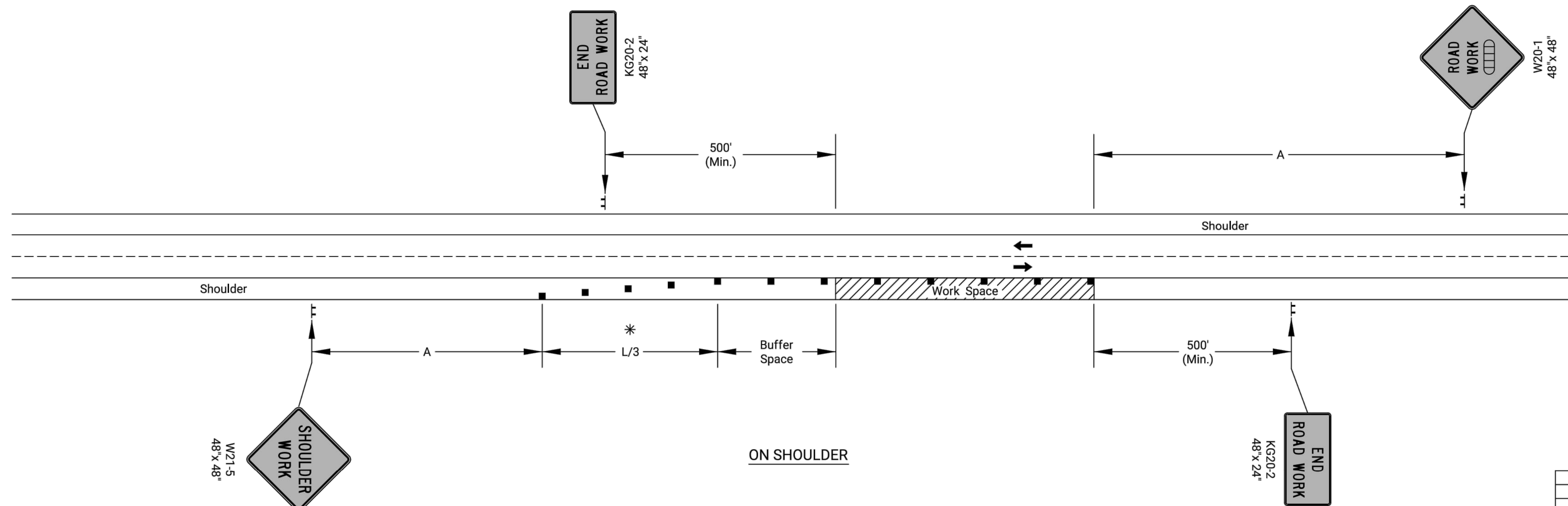
STATE	PROJECT NO.	YEAR	SHEET NO.	TOTAL SHEETS
KANSAS	472-2025-086149	2025	16	16



Notes:

No traffic control is required if the Work Space is located outside of the clear zone.

For operations of 60 minutes or less, all signs and channelizing devices may be eliminated if a vehicle with high-intensity rotating, flashing, oscillating, or strobe lights is used.



\* Omit taper if paved shoulder is less than 8' wide.

- Channelizing Device
- ◻ Ahead, 1500 ft, or 1 Mile

Plotted by : pwwmushock 6-JUN-2022 21:54  
File : te720.dgn

NO.	DATE	REVISIONS	BY	APPD

KANSAS DEPARTMENT OF TRANSPORTATION

**TRAFFIC CONTROL  
SHOULDER WORK  
UNDIVIDED ROADWAY**

TE720

FHWA APPROVAL	06-01-15	APPD.	Kristina Ericksen
DESIGNED	L.E.R.	Detailed	R.W.B.
DESIGN CK.	DETAIL CK.	QUANTITIES	QUAN. CK.
		TRACED	TRACE CK.