

# SANITARY SEWER IMPROVEMENTS TO SERVE SMITHMOOR COMMERCIAL 1766 PPS (607861) CITY OF WICHITA, KANSAS Jim Armour, P.E., City Engineer

INDEX OF SHEETS

- 1 Cover Sheet
- 2-4 Plan and Profile
- 5 Type P Manhole Detail

GENERAL NOTES

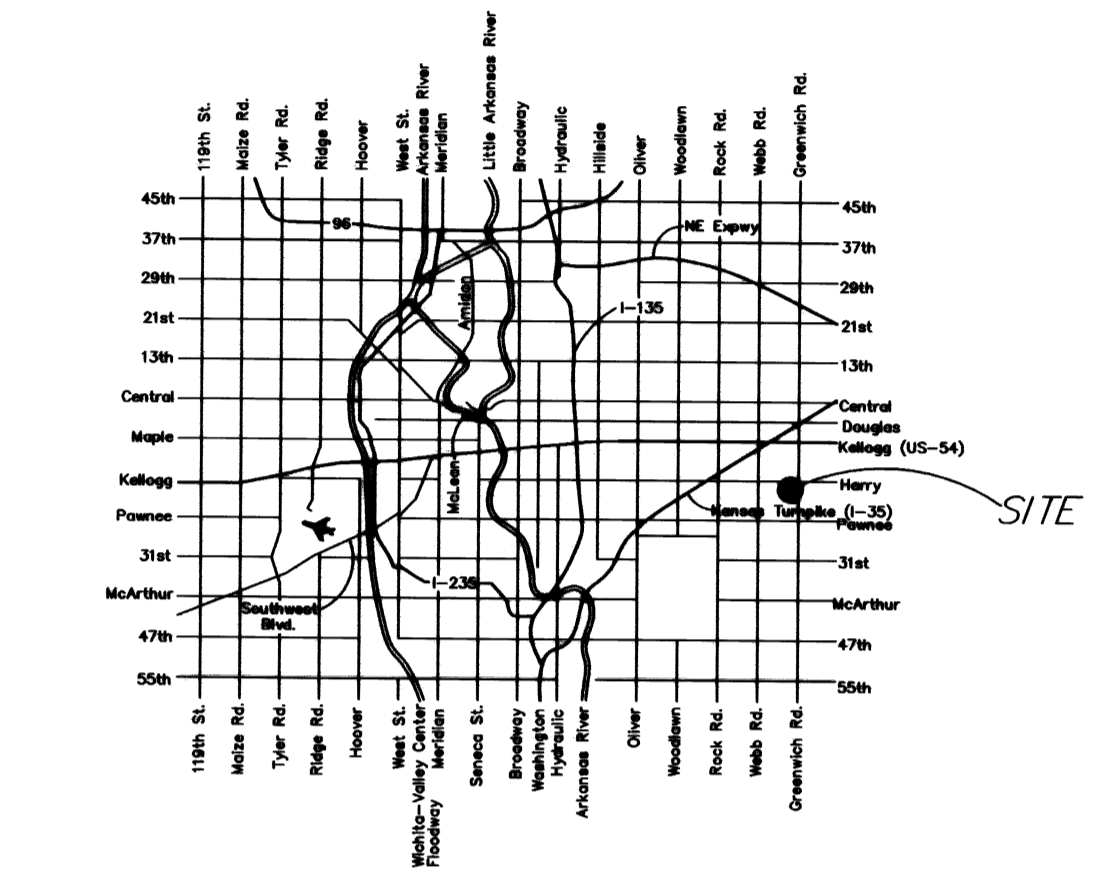
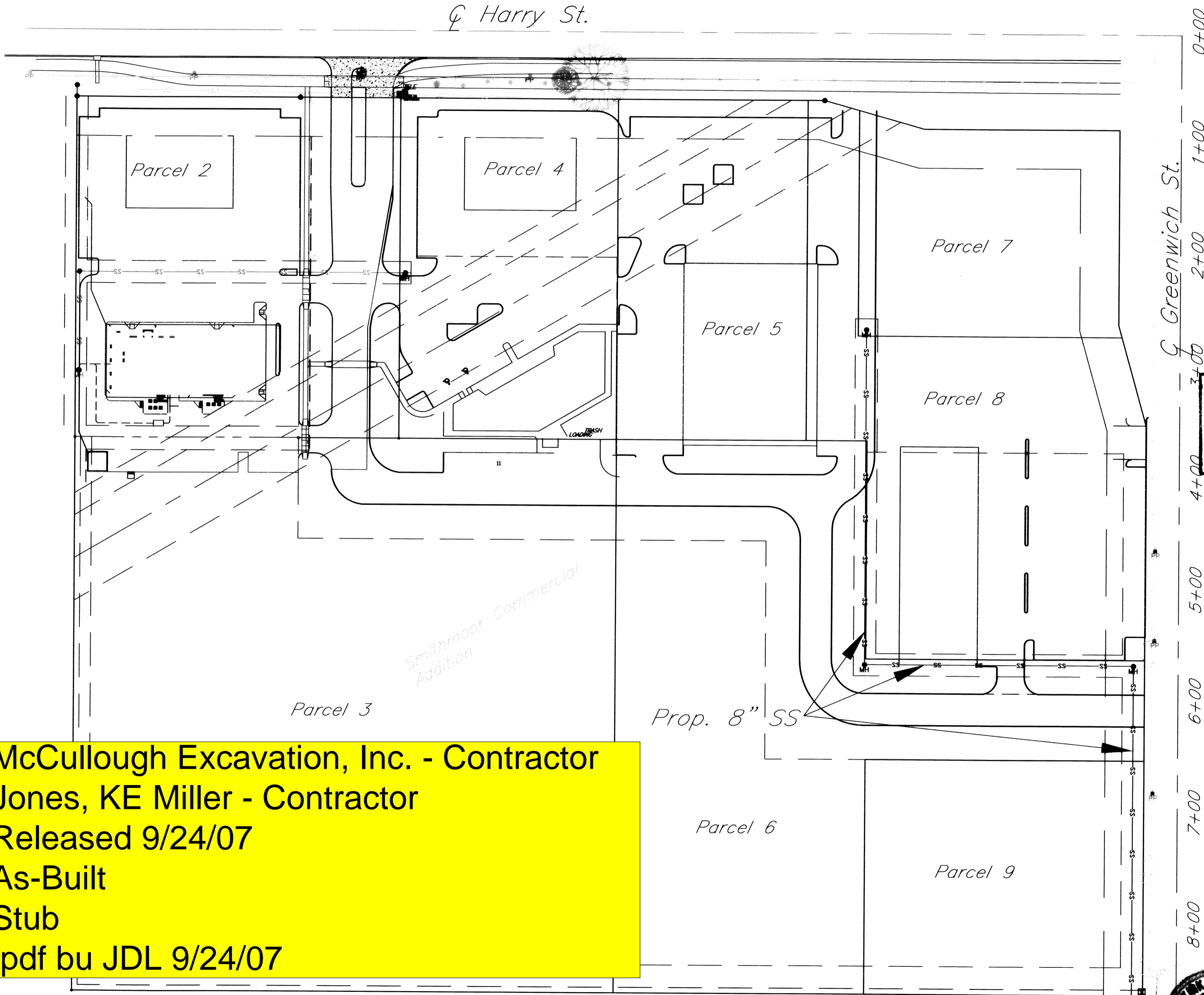
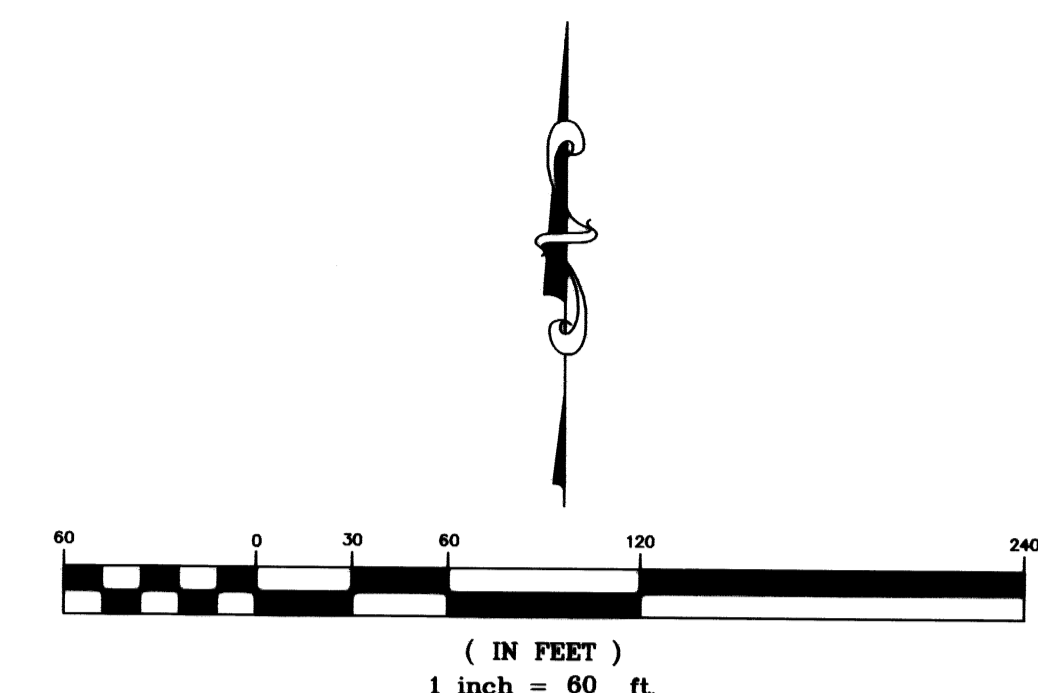
1. Contractor will be required to provide notice to utility companies a minimum of twenty-four (24) hours prior to any excavation, as follows:  

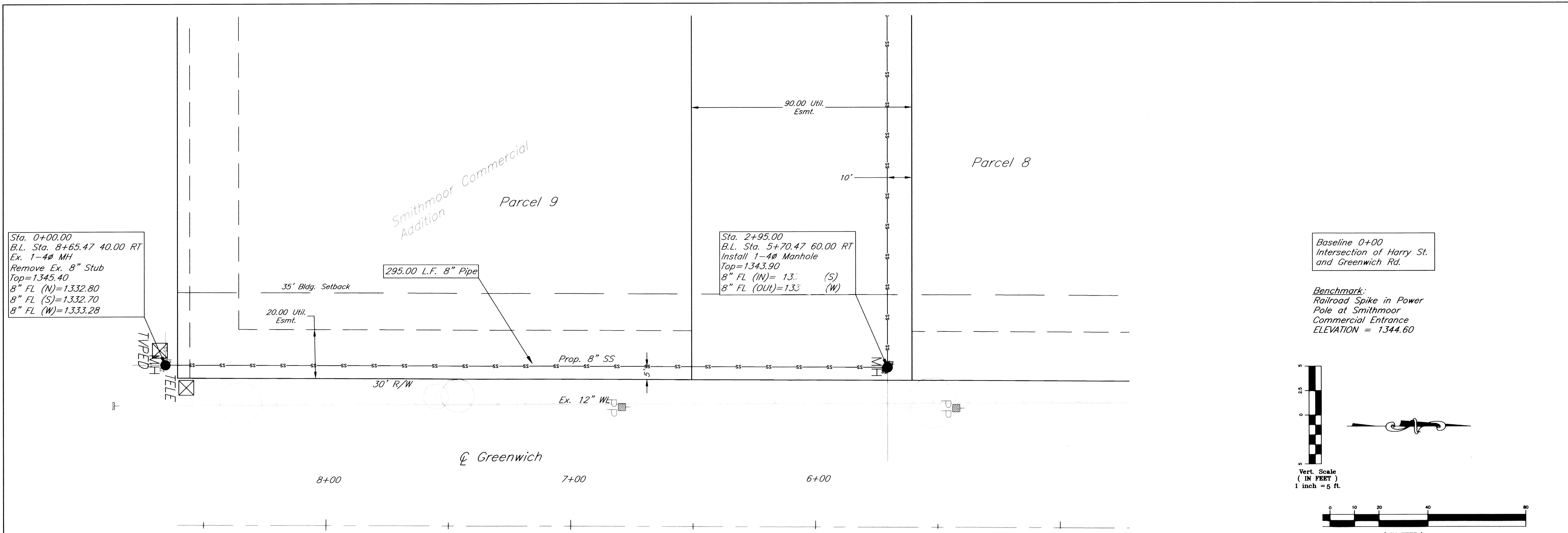
Kansas One-Call	687-2470
-----------------	----------

The Contractor must notify the following in case of an emergency:

Cox Communications	262-4270
or	263-2061
Westar Energy/	263-2061
Kansas Gas & Electric Company	1-888-482-4950
Southwestern Bell Telephone Company	1-571-2611
City of Wichita Water Department	268-4908
City of Wichita Sewer Department	268-4071
Aquila Natural Gas	942-8811
or	1-800-303-0357
2. Exist. utilities and their locations, as shown on the plans, represent the best information obtainable for design. Location information has been obtained from the various utility companies and is either from company record drawings or company-provided field locations. The Contractor will be required to work around existing utilities which do not conflict with proposed construction.
3. The Contractor to verify utility locations prior to construction of this project.
4. Utility service and installation shall be coordinated with the respective utility owners. Contacts are:  

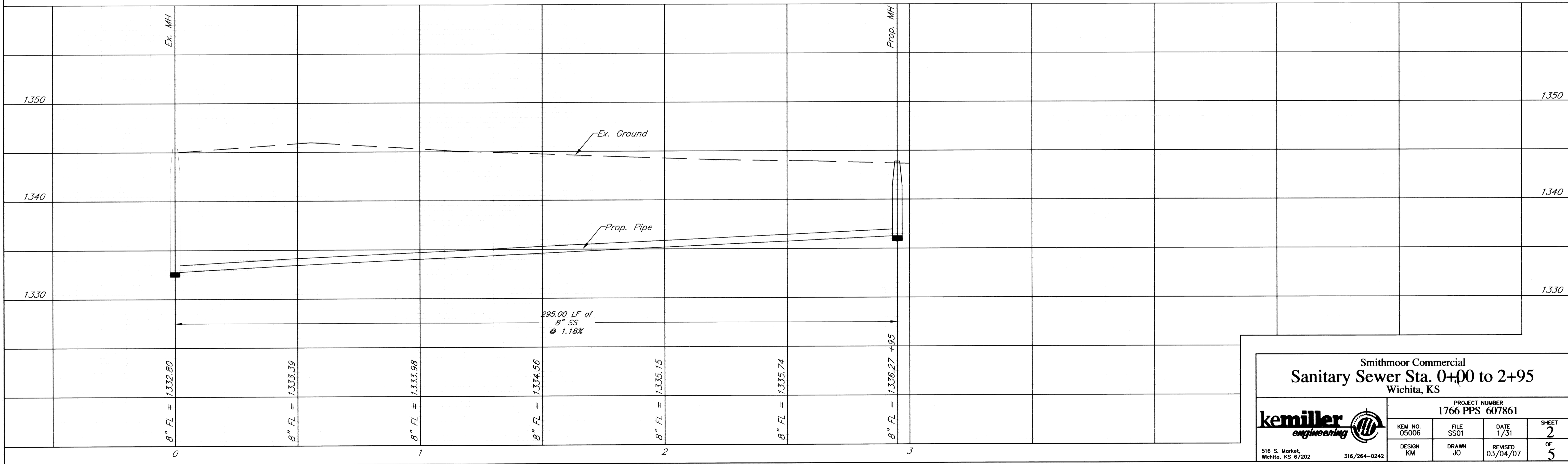
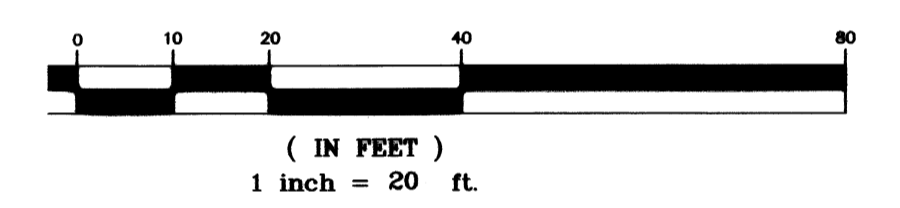
Kansas Gas Service	Jim Coe	832-3126
Westar Energy	Miles Capps	261-6251
Aquila Networks	Calvin Briggs	942-8811
Wichita Water	Paul Bryant	268-4555
Southwestern Bell	Jim Toben	268-2759
Cox Communications	Brian Ring	262-4270
5. All lawn/turf areas disturbed by construction of proposed improvements shall be restored with seed. All seeding work shall be in accordance with the City of Wichita standard specifications and the City of Wichita administrative regulation No. AR78 which governs cleanup and replacement following construction. All costs for this work shall be subsidiary to the lump sum price bid for "Site Restoration."
6. Traffic affected by the construction of this project shall be handled in accordance with the latest edition of the Manual on Uniform Traffic Control Devices.
7. All commercial signs to be moved by others prior to construction.
8. Properties within the project may have underground irrigation systems (lawn sprinklers) which conflict with new construction. Contractor shall remove such components as needed during construction of the project. The irrigation system shall be reinstalled in like kind before project completion. Any irrigation system modifications required because of project improvements shall be coordinated with the property owner. Portions of underground irrigation systems not in conflict with new construction shall be protected from damage and shall remain in place. All work related to underground irrigations/sprinklers shall be subsidiary to Site Restoration.
9. Cuts made to paved surfaces on public property will be repaired by the City's contractor and charged against the owner / applicant. Unit repair Prices are available from the City at 268-4418. A surcharge may be applicable; Call 268-4418 for details. Repair costs to be paid prior to release of water Service if water service is affected.





Baseline 0+00  
Intersection of Harry St.  
and Greenwich Rd.

Benchmark:  
Railroad Spike in Power  
Pole at Smithmoor  
Commercial Entrance  
ELEVATION = 1344.60

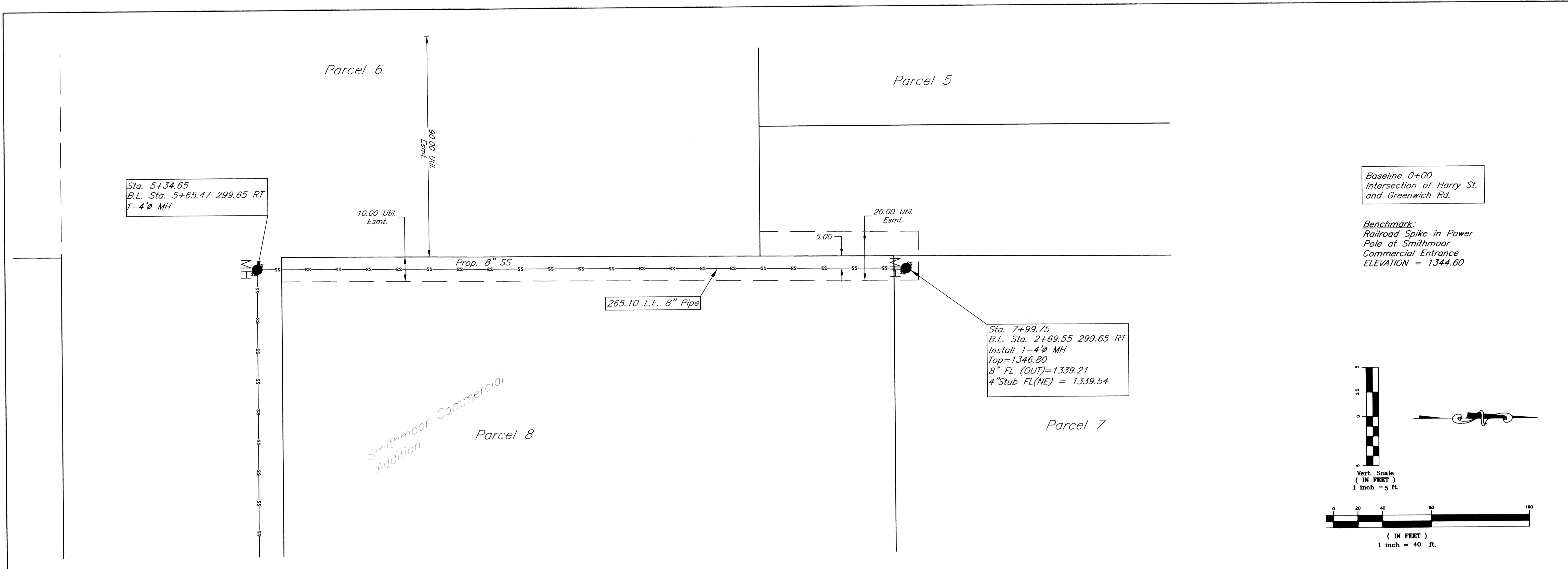


Smithmoor Commercial  
**Sanitary Sewer Sta. 0+00 to 2+95**  
Wichita, KS

PROJECT NUMBER <b>1766 PPS 607861</b>			
KEM NO. 05006	FILE SS01	DATE 1/31	SHEET <b>2</b>
DESIGN KM	DRAWN JO	REVISED 03/04/07	OF <b>5</b>

516 S. Market, Wichita, KS 67202      316/264-0242



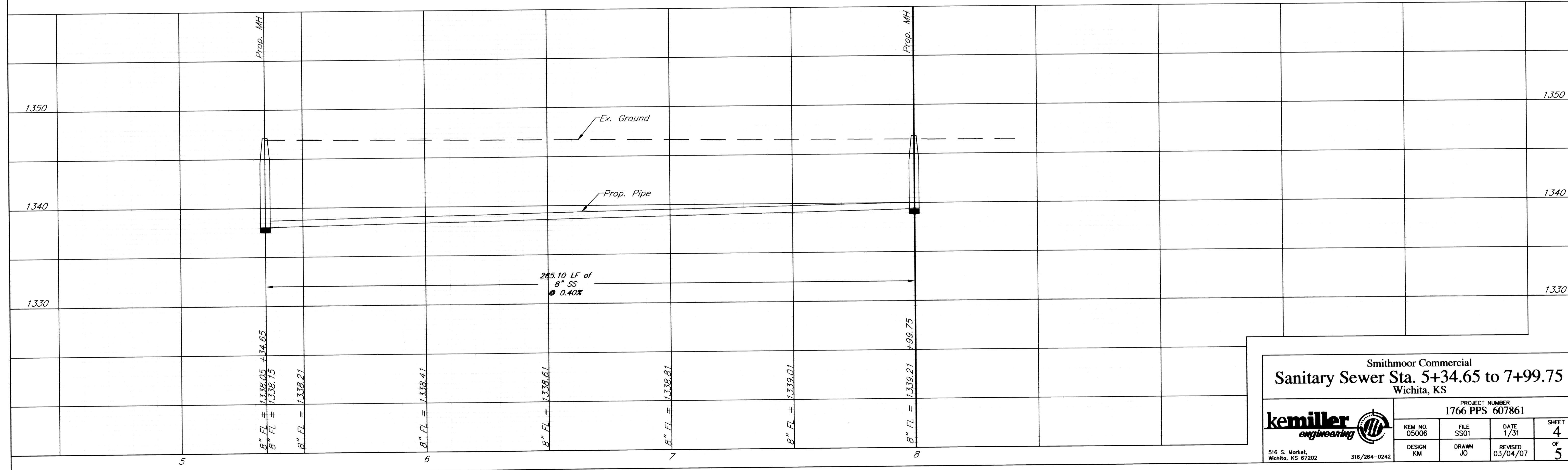
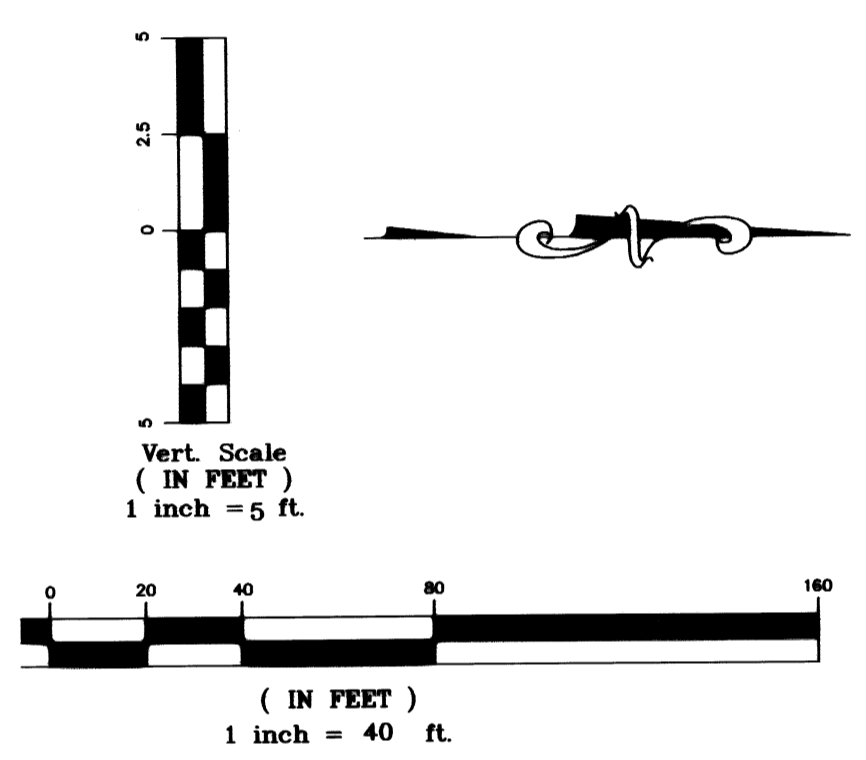


Sta. 5+34.65  
 B.L. Sta. 5+65.47 299.65 RT  
 1-4' MH

Sta. 7+99.75  
 B.L. Sta. 2+69.55 299.65 RT  
 Install 1-4' MH  
 Top=1346.80  
 8" FL (OUT)=1339.21  
 4" Stub FL(NE) = 1339.54

Baseline 0+00  
 Intersection of Harry St.  
 and Greenwich Rd.

Benchmark:  
 Railroad Spike in Power  
 Pole at Smithmoor  
 Commercial Entrance  
 ELEVATION = 1344.60



Smithmoor Commercial  
**Sanitary Sewer Sta. 5+34.65 to 7+99.75**  
 Wichita, KS

PROJECT NUMBER <b>1766 PPS 607861</b>			
KEM NO. 05006	FILE SS01	DATE 1/31	SHEET <b>4</b>
DESIGN KM	DRAWN JO	REVISED 03/04/07	OF <b>5</b>

516 S. Market, Wichita, KS 67202      316/264-0242