

LATERAL 7, MAIN 15, SANITARY SEWER 23 SANITARY SEWER EXTENSION

Lots 1-8, Block 3; Lots 13-24, Block 1

VALENCIA ADDITION

PROJECT NO. 468-84258

O.C.A. NO. 744202

GENERAL NOTES

- Contractor will be required to provide a minimum advance notice of seventy-two (72) hours to utility companies prior to starting any excavation as follows:

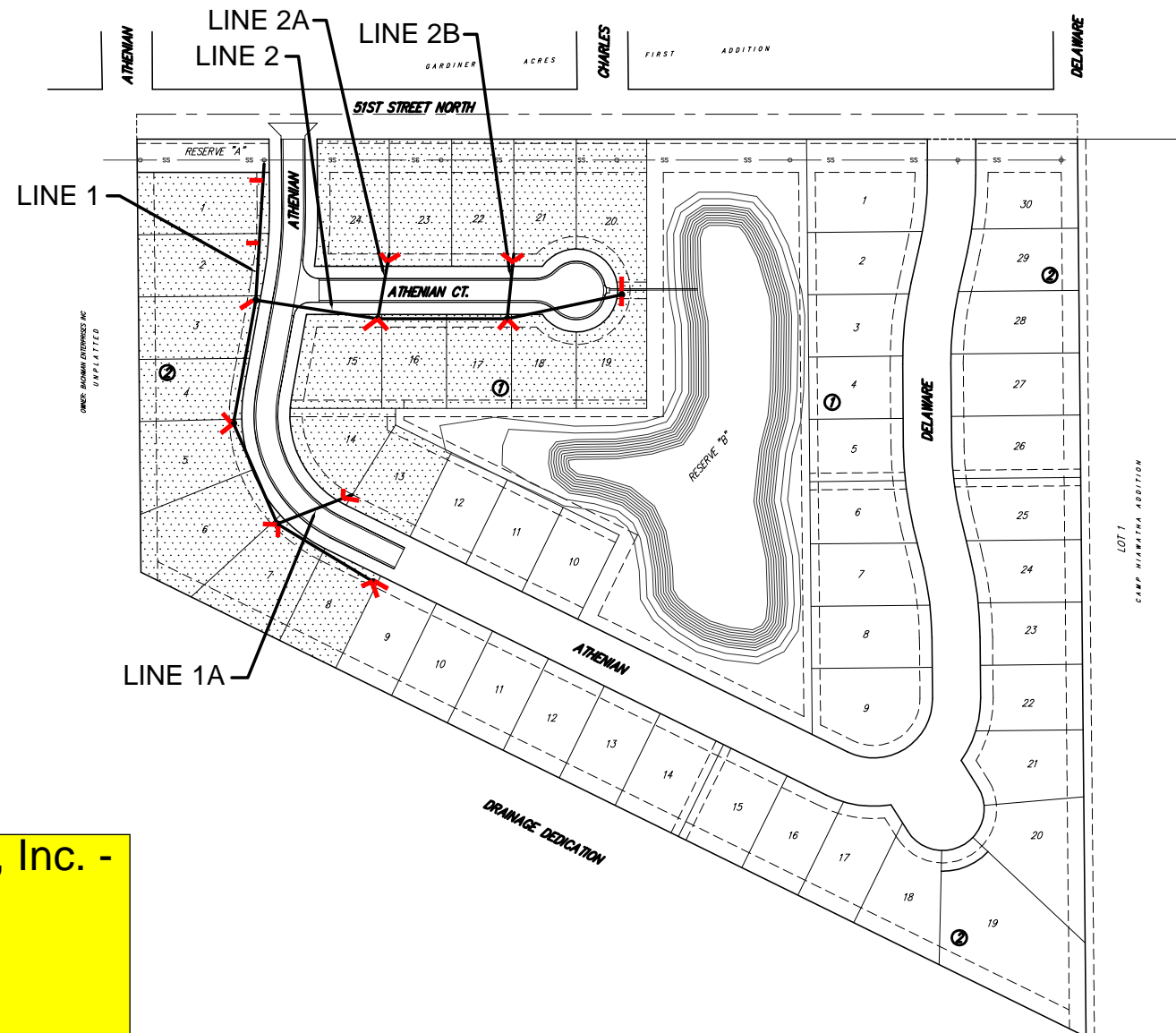
Kansas One-Call 687-2470

The Contractor must notify the following in case of an emergency:

Cox Communications	262-0661
Kansas Gas Service	383-8600
Westar	383-8600
Southwestern Bell Telephone Company	1-800-286-8313
City of Wichita Water Department	262-6000
City of Wichita Sewer Maintenance	262-6000

- Underground utility service lines and overhead utility pole lines are to be adjusted as necessary by others prior to construction unless the plans specifically call for their adjustment by the Contractor or unless the plans specifically identify a utility to be adjusted by its owner during construction. Existing utilities and their location, as shown on the plans, represent the best information obtainable for design. Location information has been obtained from the various utility companies and is either from company record drawings or company-provided field locations. The Contractor will be required to work around existing utilities within the right-of-way which do not conflict with proposed construction.
- Rubble from the removal of miscellaneous structures and excess excavation which is to be wasted shall be disposed of on sites to be provided by the Contractor. These sites shall be approved by the Engineer as to suitability, appearance and site location. Locations that, in the opinion of the Engineer, will leave an unsightly appearance will not be approved.
- All disposal sites must be approved by the Kansas Department of Health and Environment. Material either stockpiled or disposed of in a flood plain would require a Kansas State Board of Agriculture permit. Any material dumped in waters of the United States or wetlands is subject to U.S. Corps permitting regulations. Any material buried or stockpiled beyond approved of Engineers construction limits would require additional archeological investigations unless buried in a previously approved borrow location.
- The Contractor shall give all property owners and/or tenants of developed property directly abutting the construction of this project a minimum of ten (10) days advance notice prior to start of construction.
- The Contractor shall seed, fertilize and mulch all disturbed areas upon completion of construction. Incidental to the bid item for "Site Clearing and Restoration".
- Erosion control for this project will consist of installing a Stabilized Construction Entrance and the Installation of 200 Lf. of Silt Fence placed to block the southerly limits of construction from the existing drainage channel.

Dondlinger & Sons Construction Co., Inc. - Contractor
May, City - Inspector
 Released 6/2/07
 As-Built
 Risers & Stubs
 .pdf by JDL 8/2/07



IMPROVEMENT DISTRICT

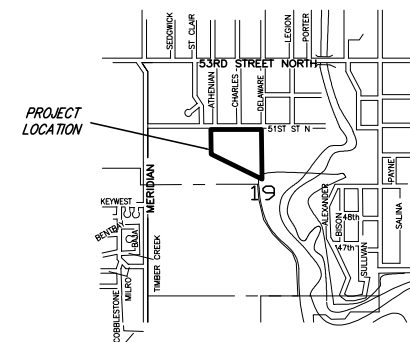
CITY OF WICHITA, KANSAS
 JAMES ARMOUR, P.E. - CITY ENGINEER

BENCH MARKS

BENCH MARK #1: "U.S.G.S. STANDARD TABLE, "41-B", 478' SOUTH AND 28' WEST OF THE CENTER LINES OF 53RD ST. N. AND MERIDIAN ELEVATION = 1331.246 M.S.L.

INDEX OF SHEETS

- TITLE SHEET
- LINE 1 and 1A PLAN/PROFILE
- LINE 2, 2A, 2B PLAN/PROFILE
- CLEANOUT RISER DETAILS
- SERVICE RISER DETAILS
- MANHOLE RING AND COVER DETAILS
- TYPE 'P' MANHOLE DETAIL
- FINAL PLAT



VICINITY MAP



Ruggles & Bohm, P.A.
 Engineering, Surveying, Land Planning
 924 North Main (316) 264-8008
 Wichita, Kansas 67203 (316) 264-4621 fax
 www.rbkansas.com E-mail: info@rbkansas.com
 Jan. 3, 2007 2990F