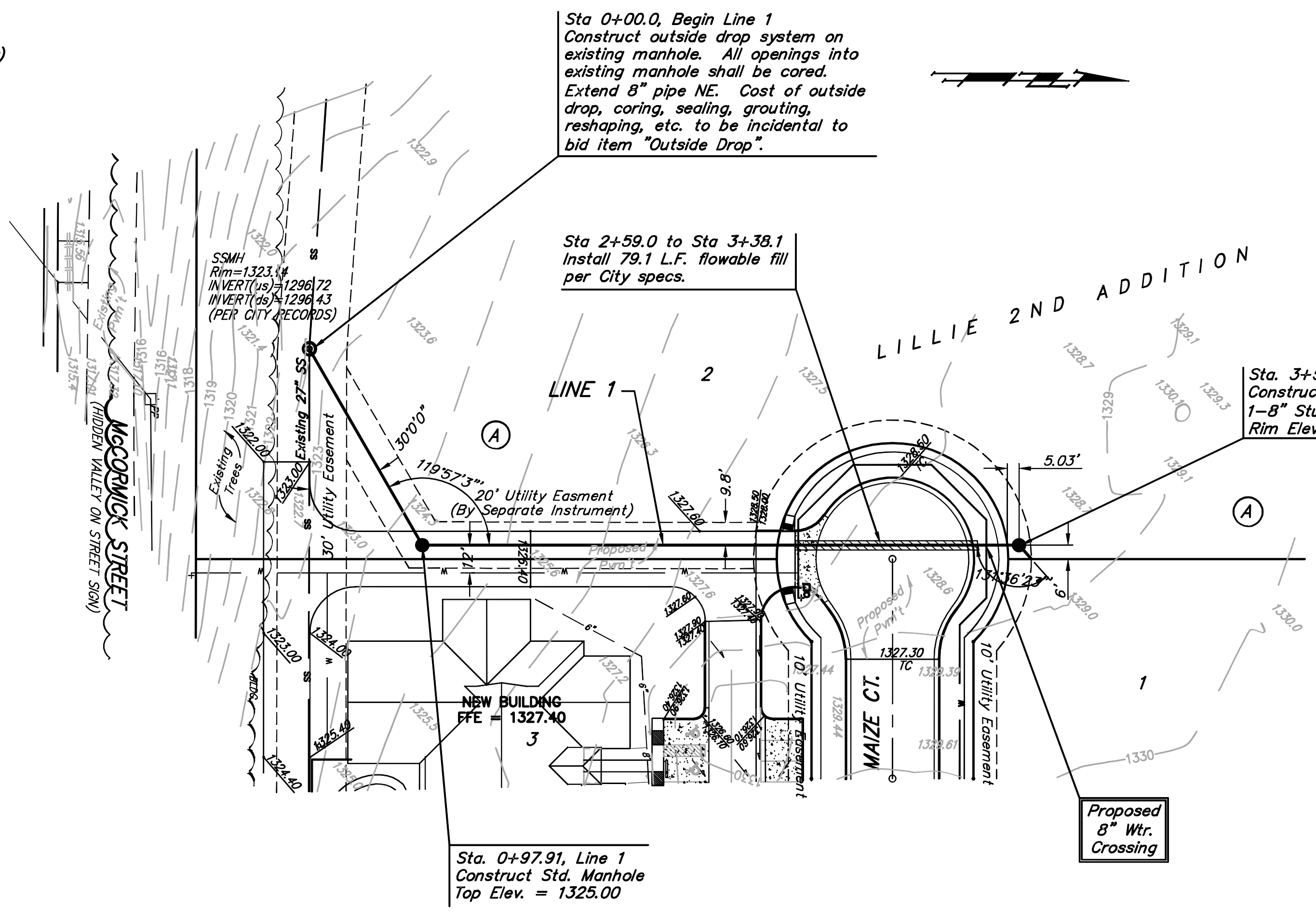


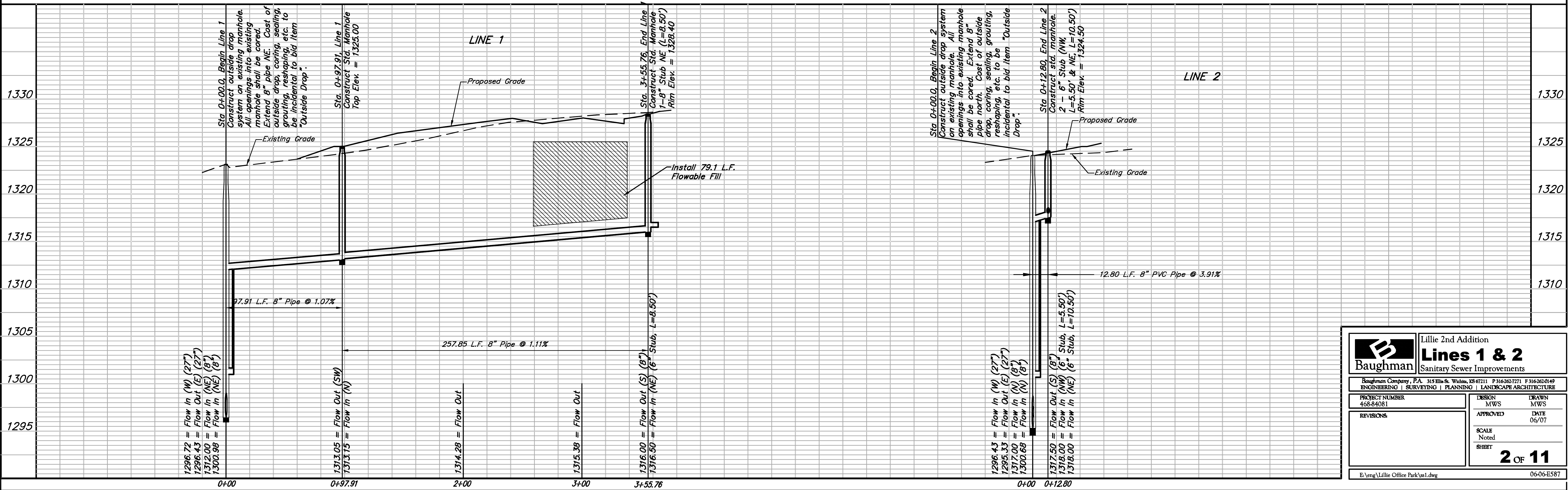
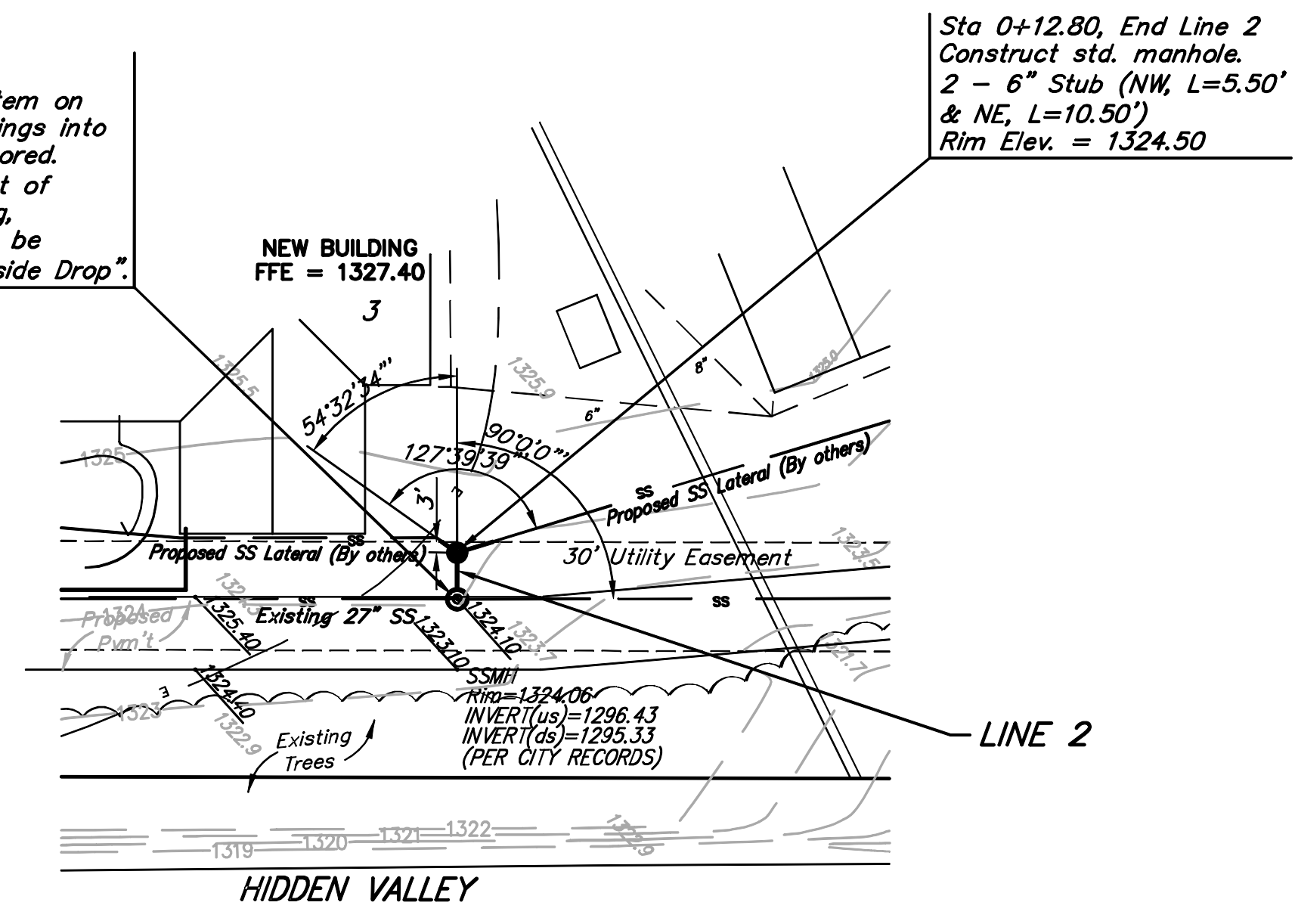
Benchmark:

City of Wichita Benchmark Disc -
Maize Road & McCormick (Hidden Valley)
0.5 Mi. S. of Maple on the NE Corner
of R.C.B.C. Over Cowskin Creek, South
of Hidden Valley
Elev. = 131.53 (City Datum)



Remove trees only as necessary
for sanitary sewer construction
and only with permission of
Developer or Baughman Co.
Cost of removal to be incidental
to lump sum bid item "Site
Clearing & Restoration".

Scale: 1" = 40' Horizontal
1" = 5' Vertical
• = Iron



		Lillie 2nd Addition	
		Lines 1 & 2	
Sanitary Sewer Improvements		Baughman Company, P.A. 315 Ellis St. Wichita, KS 67211 P 316-262-7271 F 316-262-0149 ENGINEERING SURVEYING PLANNING LANDSCAPE ARCHITECTURE	
PROJECT NUMBER 468-84081	DESIGN MWS	DRAWN MWS	DATE 06/07
REVISIONS:	APPROVED	SCALE Noted	SHEET
		2 OF 11	
E:\eng\Lillie Office Park\ss1.dwg		06-06-ES87	