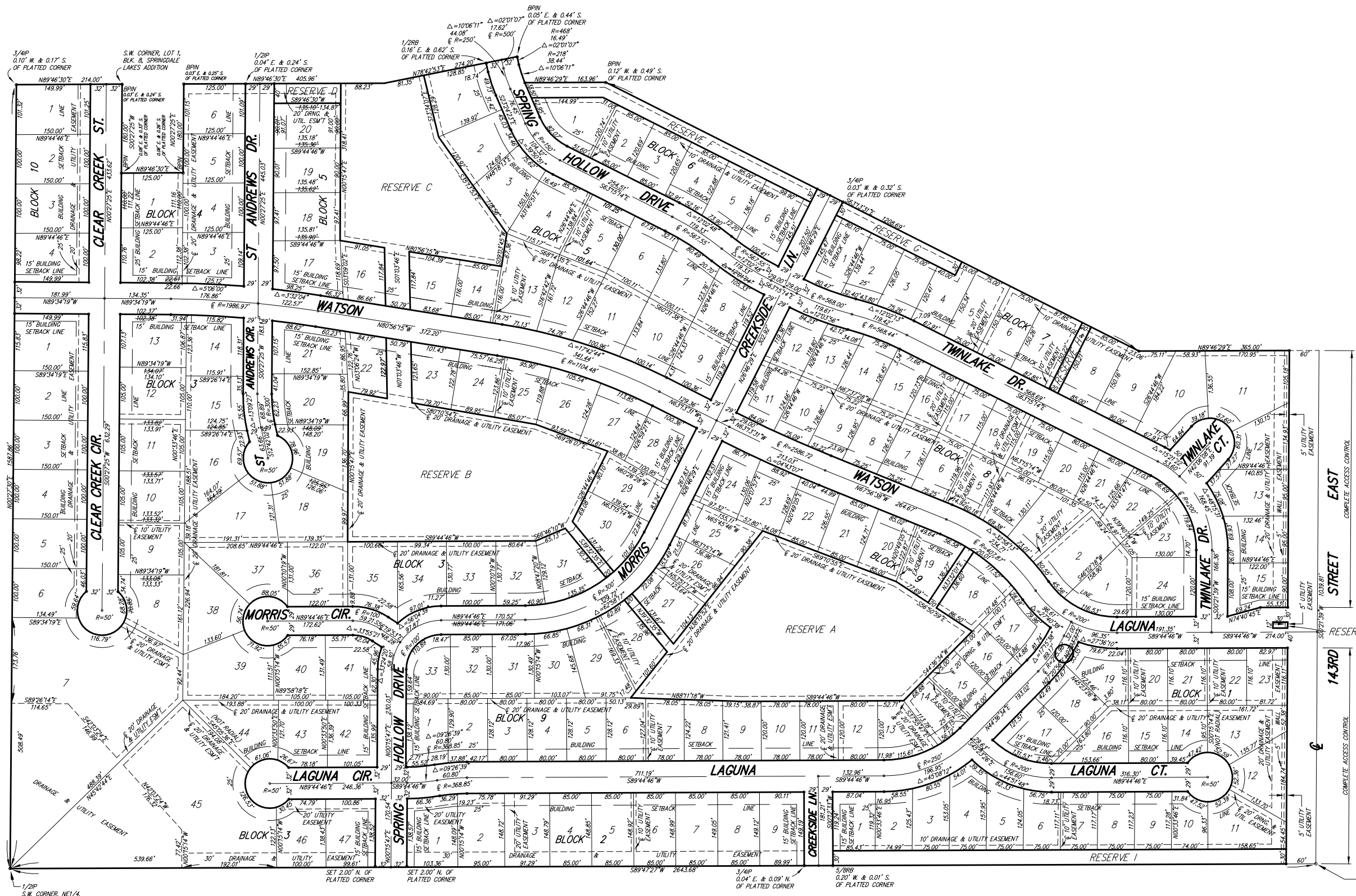


CLEAR CREEK ADDITION

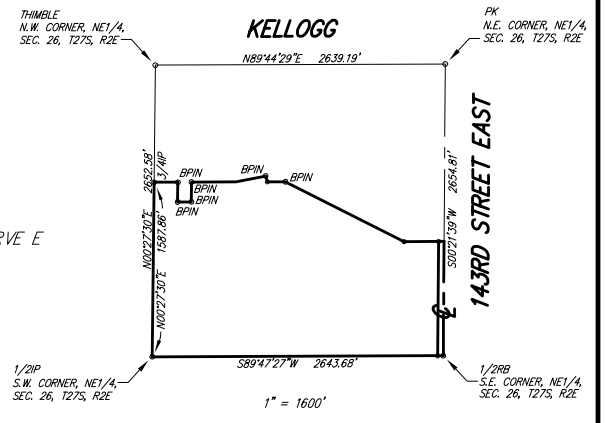
Wichita, Sedgwick County, Kansas



1" = 100'

- SURVEY MARKER LEGEND**
- THIMBLE = 5/8" REBAR IN THIMBLE (FOUND)
 - 1/2" IR = 1/2" IRON PIPE (FOUND)
 - 3/4" IR = 3/4" IRON PIPE (FOUND)
 - 5/8" IR = 5/8" REBAR (FOUND)
 - BPIN = 5/8" REBAR W/BAUGHMEN CAP (FOUND)
 - PK = PK NAIL W/KEC WASHER (FOUND)
 - = 5/8" REBAR W/R&B CAP (SET)

BENCH MARK: R.R. SPIKE WEST FACE POWER POLE
38 FEET WEST OF THE S.E. CORNER, SEC. 16, T27S, R2E
ELEV. = 1314.88 NGVD



Ruggles & Bohm, P.A.
Engineering, Surveying, Land Planning

924 North Main (316) 264-8008
Wichita, Kansas 67203 (316) 264-4621 fax
www.rbkansas.com E-mail: info@rbkansas.com

DWG FILE: 226P-W.C.
PROJECT NO: 02K0226P
APRIL 9, 2003