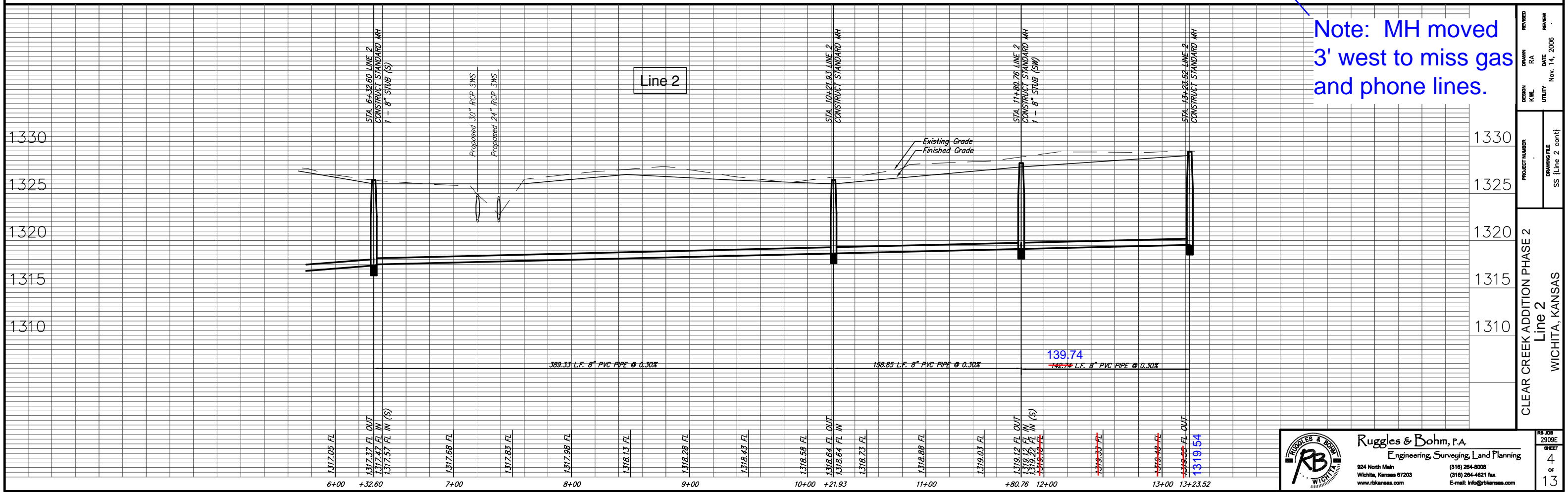


STA. 6+32.60 LINE 2  
CONSTRUCT STANDARD MH  
1 - 8" STUB (S)  
TOP = 1326.4

STA. 10+21.93 LINE 2  
CONSTRUCT STANDARD MH  
TOP = 1326.4

STA. 11+80.76 LINE 2  
CONSTRUCT STANDARD MH  
1 - 8" STUB (SW)  
TOP = 1328.2

REMOVE AND REPLACE EXISTING  
WALK AS NECESSARY FOR  
CONSTRUCTION. 13+20.52  
STA. 13+23.52 LINE 2  
CONSTRUCT STANDARD MH  
TOP = 1329.4



Note: MH moved  
3' west to miss gas  
and phone lines.

DESIGN	KWL	RA	DATE	REVIEW
PROJECT NUMBER	DRAWING FILE		Nov. 14, 2006	
CLEAR CREEK ADDITION PHASE 2		SS {Line 2 cont}		
Line 2		WICHITA, KANSAS		

**Ruggles & Bohm, P.A.**  
Engineering, Surveying, Land Planning  
924 North Main  
Wichita, Kansas 67203  
www.rbkansas.com  
(316) 264-0008  
(316) 264-4621 fax  
E-mail: info@rbkansas.com