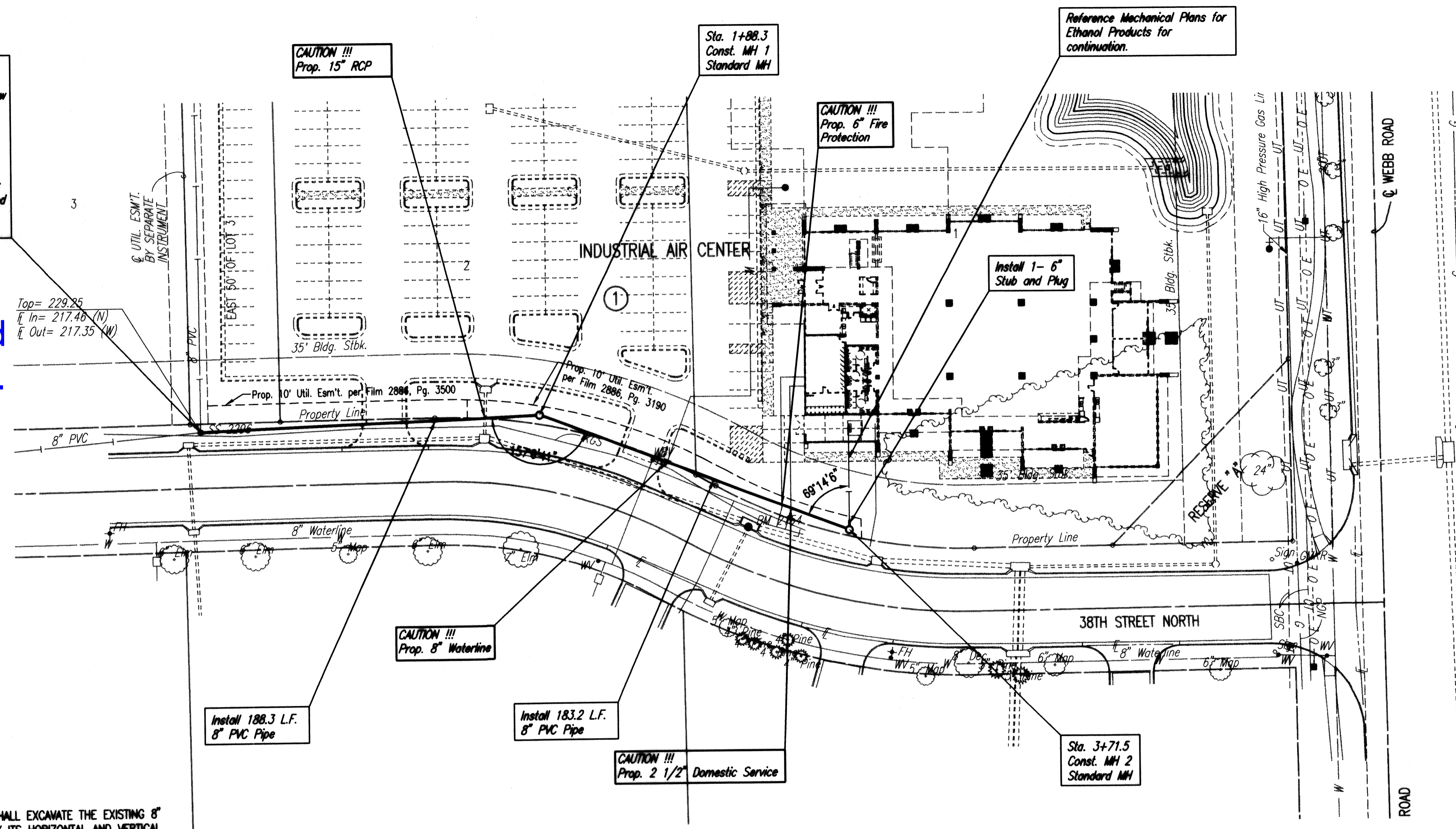


Sta. 0+00.0  
 Core existing concrete MH wall and install outside drop connection. Seal new 8" Pipe to MH with an approved waterstop gasket and non-shrink grout. Construct a minimum of 3" Reinforced Concrete Encasement from MH wall. Reshape MH floor to provide smooth flow. Repair interior Linings/Coatings as necessary. This work shall be considered subsidiary to the price bid for pipe in place.\*

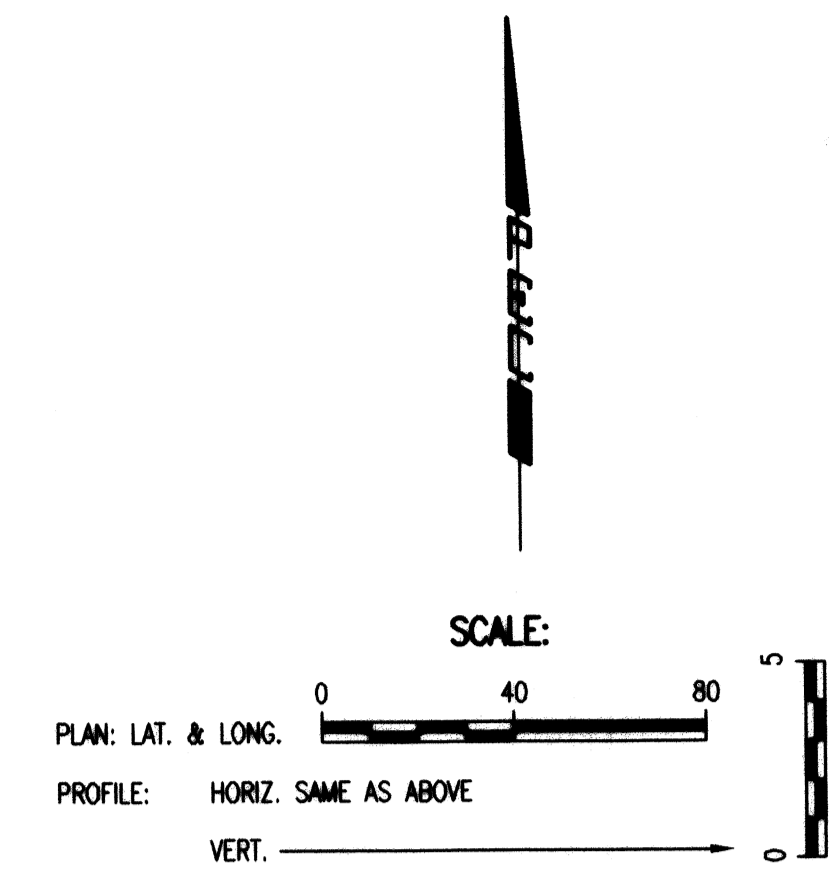
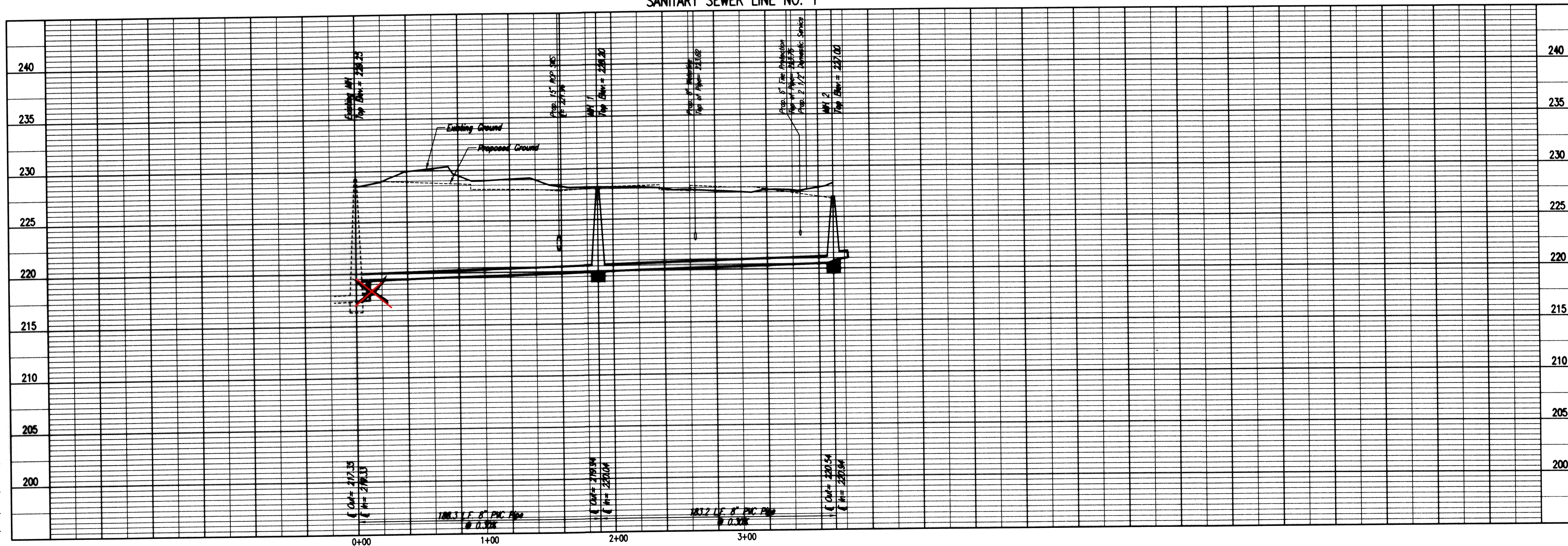
Eliminated outside drop

Note: Eliminated outside drop MH.



\* PRIOR TO BEGINNING CONSTRUCTION, THE CONTRACTOR SHALL EXCAVATE THE EXISTING 8" PVC PIPE AT SANITARY SEWER STATION 0+00.0 TO VERIFY ITS HORIZONTAL AND VERTICAL LOCATION. THE PIPE LOCATION SHALL BE REPORTED TO THE ENGINEER SO THAT ANY NECESSARY PLAN MODIFICATIONS CAN BE MADE. ANY ADDITIONAL LABOR OR MATERIALS NECESSARY TO COMPLETE THE CONNECTION SHALL BE CONSIDERED SUBSIDIARY TO THE PROJECT.

SANITARY SEWER LINE NO. 1



**Architectural Development Services, L.L.C.**  
 P.O. Box 48405  
 Wichita, Kansas 67201  
 Phone: 316 938-4343  
 Fax: 316 986-8064

**WYNN RAY BIRN**  
 LICENSED PROFESSIONAL ENGINEER  
 KANSAS  
 2/21/07

**Ethanol Products**  
**Corporate Headquarters**

38th and Webb Road  
 Wichita, Kansas

prints issued  
 3-9-07  
 For Construction

project no.  
 06122

drawn SAU checked GMB

SANITARY SEWER  
 PLAN/PROFILE  
**C3.3**  
 of

Professional Engineering Consultants, P.A.  
 303 S. CRENSHAW • WICHITA, KANSAS 67203 • 316-262-2491 • FAX 316-262-3003  
 www.perc.com

Save: 03-21-2007 5:42:40 PM by SWM  
 Plot Scale: 1"=40' 03-21-2007 5:42:40 PM by SWM  
 C:\2006\0620\Site Civil\Private Plans\Sanitary Sewer\06567-C3.3-Rev-SSPP1