

# STREET PAVING IMPROVEMENTS

to serve

## LILLIE 2ND ADDITION

Maize Court, from the west line of Maize Road, west to and including the cul-de-sac.

### CITY OF WICHITA, KANSAS

James L. Armour, P.E. City Engineer

Project Number

472-84286

O.C.A. Number

766123

### GENERAL NOTES:

1. Contractor will be required to provide notice to utility companies a minimum of forty-eight (48) hours prior to any excavation, as follows:

Kansas One-Call 687-2470

The Contractor must notify the following in case of an emergency:

Cox Communications 262-4270  
 Kansas Gas Service 1-888-482-4950  
 Westar Energy 383-8650  
 Aquila Energy 1-888-482-4950  
 SBC 268-2245  
 City of Wichita Water Dept. 268-4563  
 City of Wichita Sewer Maint. 268-4024  
 City of Wichita Storm Sewer Maint. 268-4090  
 City of Wichita Traffic Maint. 268-4034  
 Conoco Pipeline Co. 1-800-231-2551  
 Southern Star Pipeline Co. 529-6600  
 Phillips Pipeline Co. 1-800-766-8230  
 Jayhawk Pipeline Co. 1-888-542-9575

2. Underground utility service lines and overhead utility pole lines are to be adjusted as necessary by others prior to construction unless the plans specifically call for their adjustment by the Contractor or unless the plans specifically identify a utility to be adjusted by its owner during construction. Existing utilities and their location, as shown on the plans, represent the best information obtainable for design. The Contractor will be required to work around existing utilities within the right-of-way which do not conflict with proposed construction.

3. Trees and shrubs in public right-of-way which are in direct conflict with proposed new construction shall be removed by the Contractor with the Engineer's approval. Trees and shrubs which are not in direct conflict with proposed new construction shall be saved and protected from damage.

4. The Contractor shall give all property owners and/or tenants of developed property abutting the construction of this project a minimum of ten (10) days advance notice prior to start of construction.

5. The Contractor shall be responsible for preserving property irons. The Contractor will be required to re-establish any property irons which are damaged or destroyed by his construction operations. Such irons shall be re-established by a licensed land surveyor in accordance with state laws.

6. All excavation & trenching material shall be stockpiled or spread out on site as determined by the Engineer.

7. All existing and proposed erosion control measures including silt fencing, erosion control mat, straw bales, inlet barriers, and const. entrance shall be maintained throughout construction by the contractor and until project is accepted by the City of Wichita. The on-site engineer shall complete weekly reports on the status of erosion control measures. The contractor shall be required to comply with maintenance and/or replacement of erosion control measures as determined by the on-site engineer until project is accepted by City of Wichita. Maintenance and/or replacement of erosion control measures to be paid by L.S. bid item "Site Clearing & Restoration"

8. All of Maize Court R/W and Maize Rd. R/W (disturbed during construction) shall be seeded and mulched as follows: (Permanent Seeding)  
**SEED** -- Kansas Premium Fescue Blend;  
 8#/1000 Sq. Ft.  
**FERTILIZER** -- 12-24-12 Ratio at 350 Lbs./Ac.  
**MULCH** -- 2 Tons Prairie Hay / Acre

All other disturbed areas not in street R/W are to be seeded as follows: (Temporary seeding)  
**SEED** -- Rye grass (PLS)--5#/1000 Sq. Ft. and  
 Kansas Premium Fescue Blend; 5#/1000 Sq. Ft.

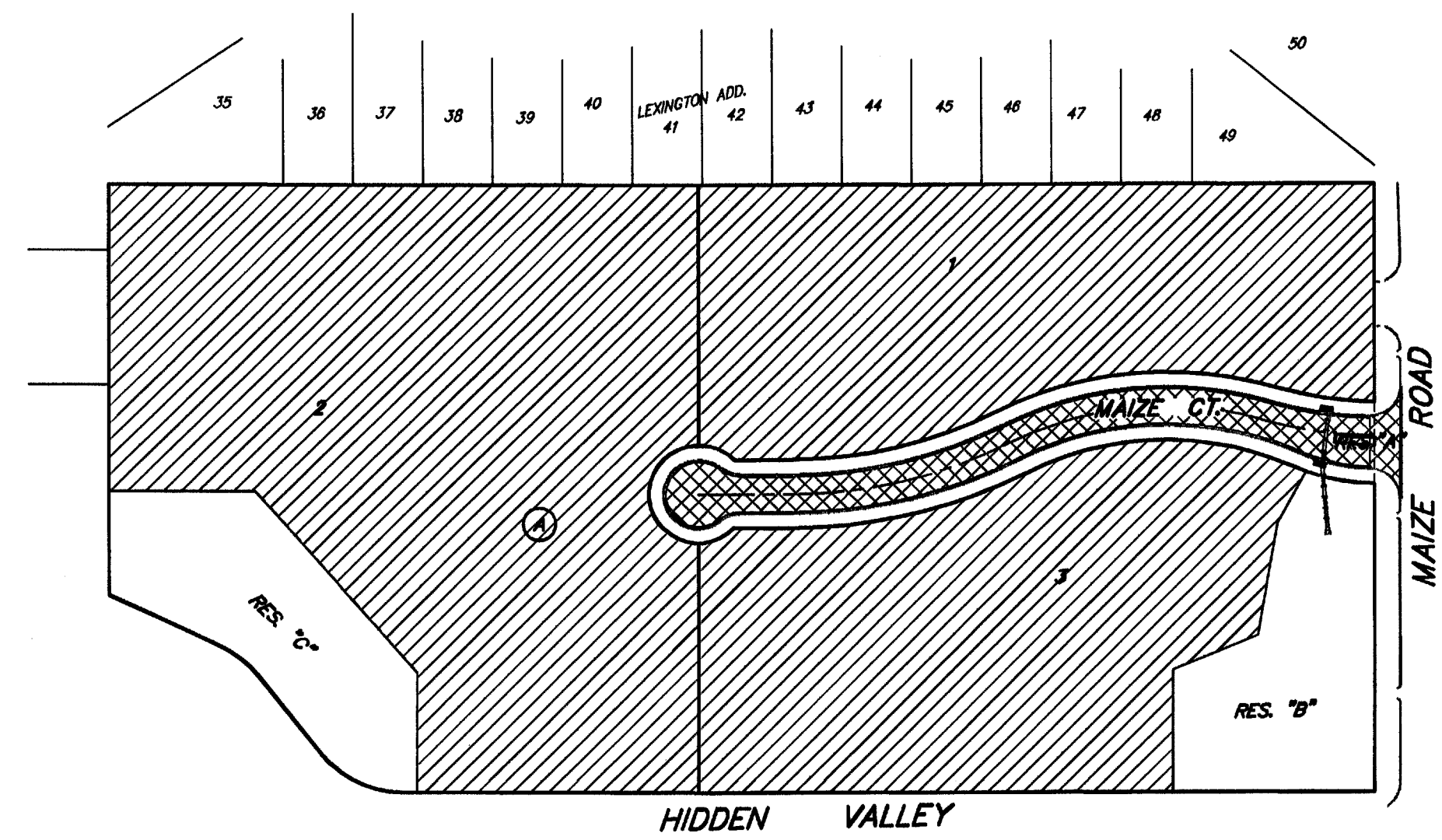
Contractor shall prepare ground per City Specifications. All seeding operations shall conform to City of Wichita Standard Specifications. All cost associated with seeding, mulching, and fertilizing shall be included in bid item "Project Seeding".

9. The developer for this project is Matt Lillie, and may be contacted at (316) 773-1313.

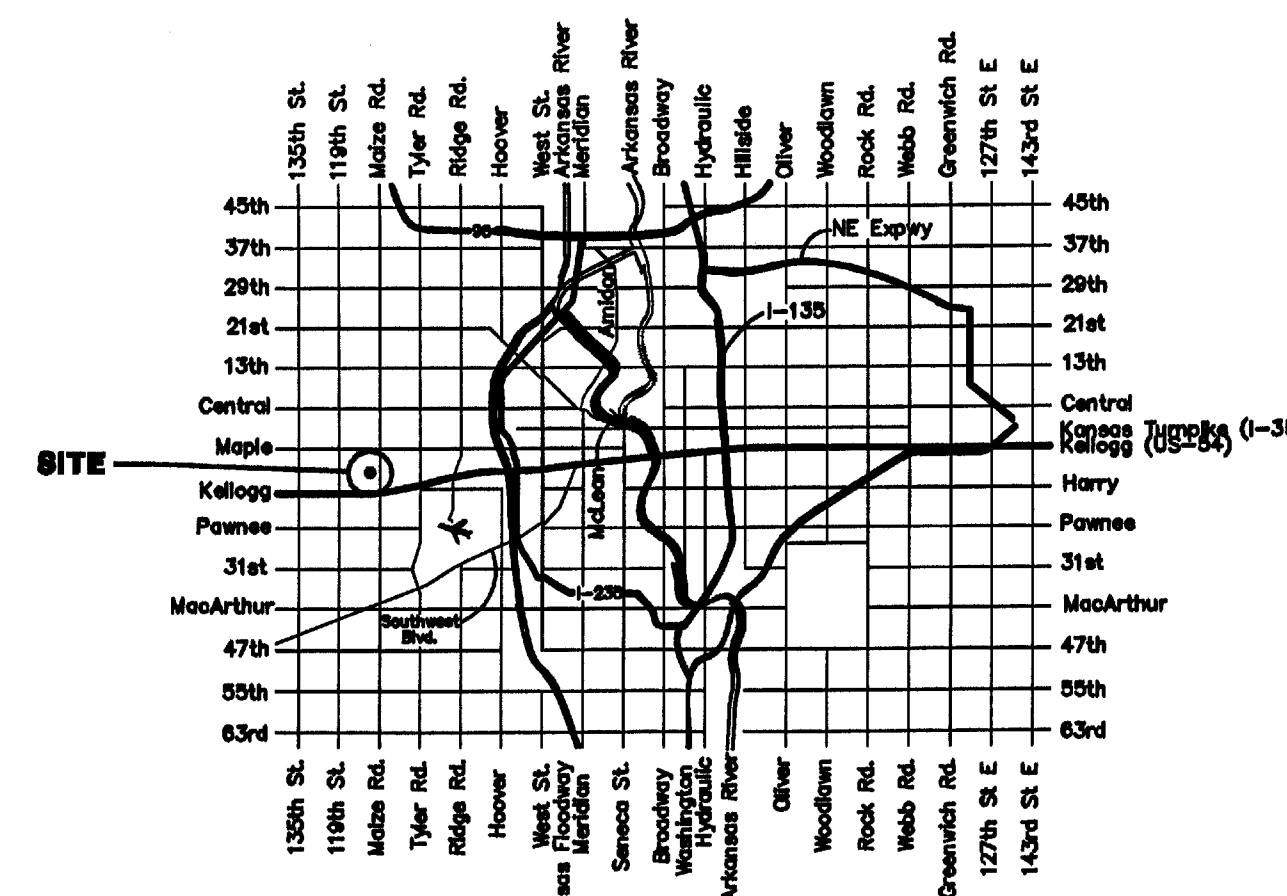
10. Rubble from the removal of miscellaneous structures and excess excavation which is to be wasted shall be disposed of on sites to be provided by the Contractor. These sites shall be approved by the Engineer as to suitability, appearance and site location. Locations, in the opinion of the Engineer, that will leave an unsightly appearance will not be approved. All disposal sites must be approved by the Kansas Department of Health and Environment. Material either stockpiled or disposed of in a flood plain would require a Kansas State Board of Agriculture permit. Any material dumped in waters of the United States or wetlands is subject to U.S. Corps. of Engineers permitting regulations. Any material buried or stockpiled beyond approved construction limits would require additional archaeological investigations unless buried in a previously approved borrow location.

11. Earthwork Cross Sections and Mass Grading reflect the best topographic information available at the time of plan preparation. The Contractor shall satisfy himself with the Earthwork Quantities as bid for Excavation and Compacted Fill prior to bidding. No additional payments or change orders for earthwork or earthwork related items will be accepted.

12. A saw cut of at least one-half the depth of existing surface courses or one-fourth the depth of the existing total pavement thickness shall be provided at locations where proposed construction abuts an existing surface course or pavement for which partial removal of that surface or pavement is required. Sawed joint to facilitate removal within three (3) feet of existing joints will not be permitted and for such instances the limits of removal shall extend to the existing joint. Such saw cuts will not be paid for directly and this cost shall be considered as subsidiary to the removal of the surface or pavement.



Benefit District Proposed Streets

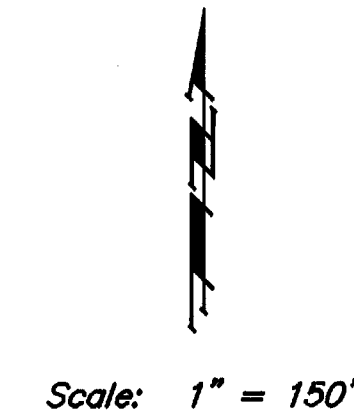


Vicinity Map

**Street Earthwork Totals**  
 Excavation = 1564.4 C.Y.  
 Loose Fill = 142.1 C.Y.  
 Compacted Fill = 0.0 C.Y.  
**Total Project Length**  
 782 L.F. = 0.15 Miles

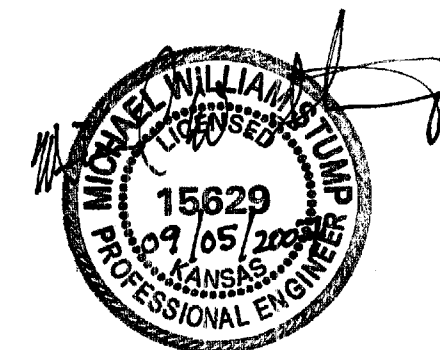
### Benchmarks

City Disc - Maize Road & McCormick (Hidden Valley) 0.5 Mi. South of Maple on the NE Corner of R.C.B.C Over Cowskin Creek, South of Hidden Valley Elev. = 1318.93 City Datum (1318.93 NGVD29)



### Sheet Index

Title Sheet	1
41' Pavement Detail	2
Sign Detail	3
Miscellaneous Detail	4
Maize Court	5-6
Erosion Control Plan	7
Erosion Control Details	8-11
Earth Work Cross Sections	12-14
Coordinate Sheet	15
Copy of Plat	16



Baughman Company, P.A. 315 Ellis St. Wichita, KS 67211 P316-262-7271 F316-262-0149

ENGINEERING | SURVEYING | PLANNING | LANDSCAPE ARCHITECTURE