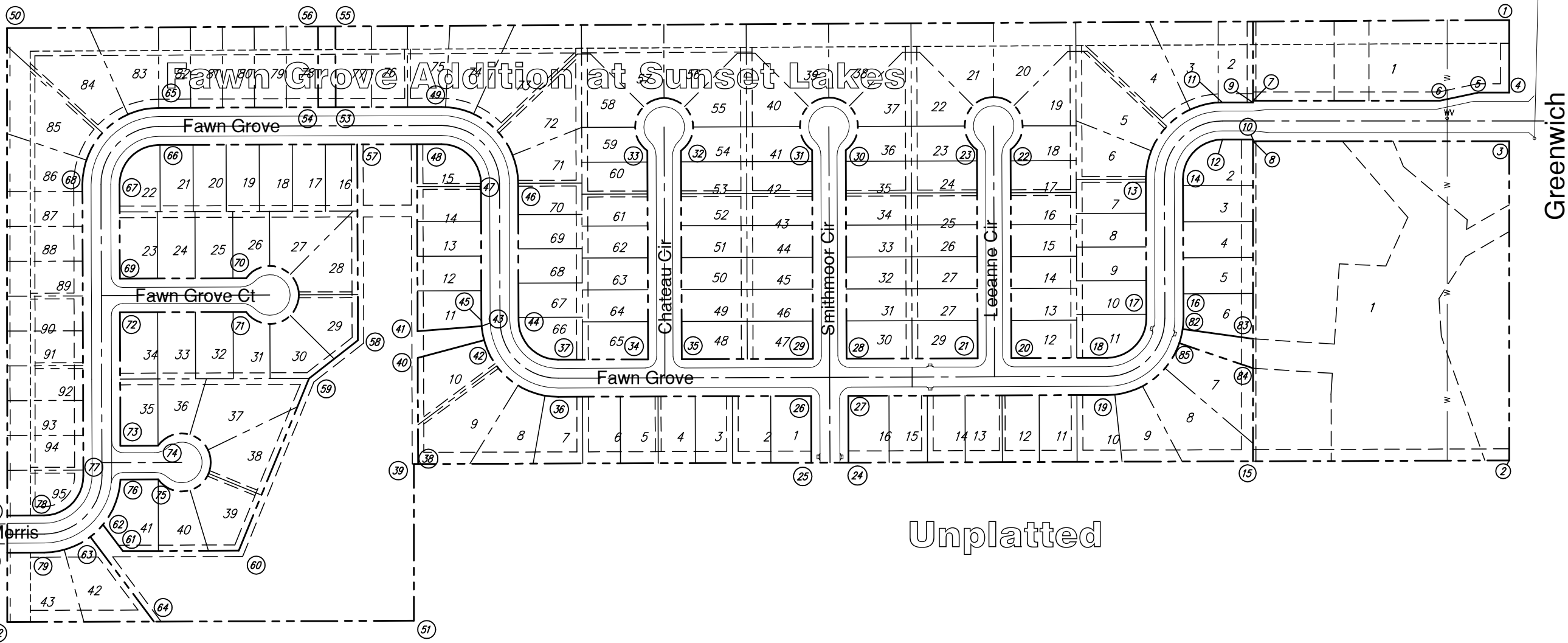


# Kansas Turnpike Authority

Harrison Park 3rd Addition



Unplatted



SCALE 1" = 100'

1	N 21095.13	E 19926.65	ADDITION CORNER
2	N 20336.47	E 19926.65	ADDITION CORNER
3	N 20886.27	E 19926.65	BLOCK CORNER
4	N 20970.27	E 19926.65	BLOCK CORNER
5	N 20970.27	E 19873.63	PC
6	N 20956.27	E 19806.83	PT
7	N 20956.27	E 19485.02	BLOCK CORNER
8	N 20886.27	E 19485.02	BLOCK CORNER
9	N 20953.27	E 19485.02	BLOCK CORNER
10	N 20889.27	E 19485.02	BLOCK CORNER
11	N 20953.27	E 19432.41	PC
12	N 20889.27	E 19432.41	PC
13	N 20820.84	E 19300.41	PT
14	N 20821.05	E 19364.41	PT
15	N 20335.03	E 19485.02	ADDITION CORNER
16	N 20561.64	E 19365.19	PC
17	N 20581.43	E 19301.19	PC
18	N 20513.21	E 19233.42	PT
19	N 20449.21	E 19233.63	PT
20	N 20512.67	E 19068.42	BLOCK CORNER
21	N 20512.48	E 19010.42	BLOCK CORNER
22	N 20871.94	E 19067.24	PC
23	N 20871.75	E 19009.24	PT
24	N 20332.75	E 18788.00	BLOCK CORNER
25	N 20332.54	E 18724.00	BLOCK CORNER

26	N 20447.54	E 18723.63	BLOCK CORNER
27	N 20447.75	E 18787.63	BLOCK CORNER
28	N 20511.74	E 18784.42	BLOCK CORNER
29	N 20511.55	E 18726.42	BLOCK CORNER
30	N 20871.02	E 18783.24	PC
31	N 20870.83	E 18725.24	PT
32	N 20870.09	E 18499.25	PC
33	N 20869.90	E 18441.25	PT
34	N 20510.62	E 18442.42	BLOCK CORNER
35	N 20510.81	E 18500.42	BLOCK CORNER
36	N 20446.12	E 18287.63	PC
37	N 20510.12	E 18287.42	PC
38	N 20330.33	E 18046.01	BLOCK CORNER
39	N 20330.30	E 18038.66	ADDITION CORNER
40	N 20513.07	E 18045.41	BLOCK CORNER
41	N 20558.95	E 18045.26	BLOCK CORNER
42	N 20543.82	E 18159.73	BLOCK CORNER
43	N 20567.69	E 18155.61	BLOCK CORNER
44	N 20577.89	E 18219.20	PT
45	N 20577.69	E 18155.20	PT
46	N 20813.91	E 18218.43	PC
47	N 20813.70	E 18154.43	PC
48	N 20881.48	E 18086.21	PT
49	N 20945.48	E 18086.00	PT
50	N 21081.20	E 17337.48	ADDITION CORNER

51	N 20060.30	E 18038.66	ADDITION CORNER
52	N 20058.01	E 17338.00	ADDITION CORNER
53	N 20944.88	E 17904.02	BLOCK CORNER
54	N 20944.78	E 17874.02	BLOCK CORNER
55	N 21084.25	E 17903.56	BLOCK CORNER
56	N 21084.09	E 17873.56	BLOCK CORNER
57	N 20881.00	E 17941.23	BLOCK CORNER
58	N 20543.36	E 17942.33	BLOCK CORNER
59	N 20477.73	E 17858.19	BLOCK CORNER
60	N 20180.99	E 17736.92	BLOCK CORNER
61	N 20180.33	E 17537.03	BLOCK CORNER
62	N 20225.76	E 17502.88	BLOCK CORNER
63	N 20204.81	E 17481.10	BLOCK CORNER
64	N 20058.84	E 17590.81	BLOCK CORNER
65	N 20943.88	E 17599.02	PC
66	N 20879.88	E 17599.23	PC
67	N 20811.66	E 17531.45	PT
68	N 20811.45	E 17467.45	PT
69	N 20649.66	E 17531.98	BLOCK CORNER
70	N 20650.37	E 17749.64	PC
71	N 20592.37	E 17749.83	PT
72	N 20591.66	E 17532.17	BLOCK CORNER
73	N 20361.66	E 17532.92	BLOCK CORNER
74	N 20361.88	E 17597.92	PC
75	N 20303.88	E 17598.11	PT

76	N 20303.66	E 17532.95	BLOCK CORNER
77	N 20310.02	E 17469.09	PC
78	N 20241.80	E 17401.46	PT
79	N 20177.80	E 17401.80	PT
80	N 20177.45	E 17337.94	BLOCK CORNER
81	N 20241.45	E 17337.91	BLOCK CORNER
82	N 20562.86	E 19363.91	BLOCK CORNER
83	N 20545.86	E 19485.02	BLOCK CORNER
84	N 20495.28	E 19485.02	BLOCK CORNER
85	N 20538.58	E 19358.12	BLOCK CORNER

Fawn Grove Addition Phase 4  
Addition Bubble Map  
WICHITA, KANSAS



**Ruggles & Bohm, P.A.**  
Engineering, Surveying, Land Planning

924 North Main  
Wichita, Kansas 67203  
www.rbkansas.com

(316) 264-8008  
(316) 264-4621 fax  
E-mail: info@rbkansas.com

DESIGN E.J.G.  
DRAWN E.J.G.  
REVIEW  
UTILITY  
DATE June 6, 2006

PROJECT NUMBER  
472-84576

SHEET  
23  
of  
32