



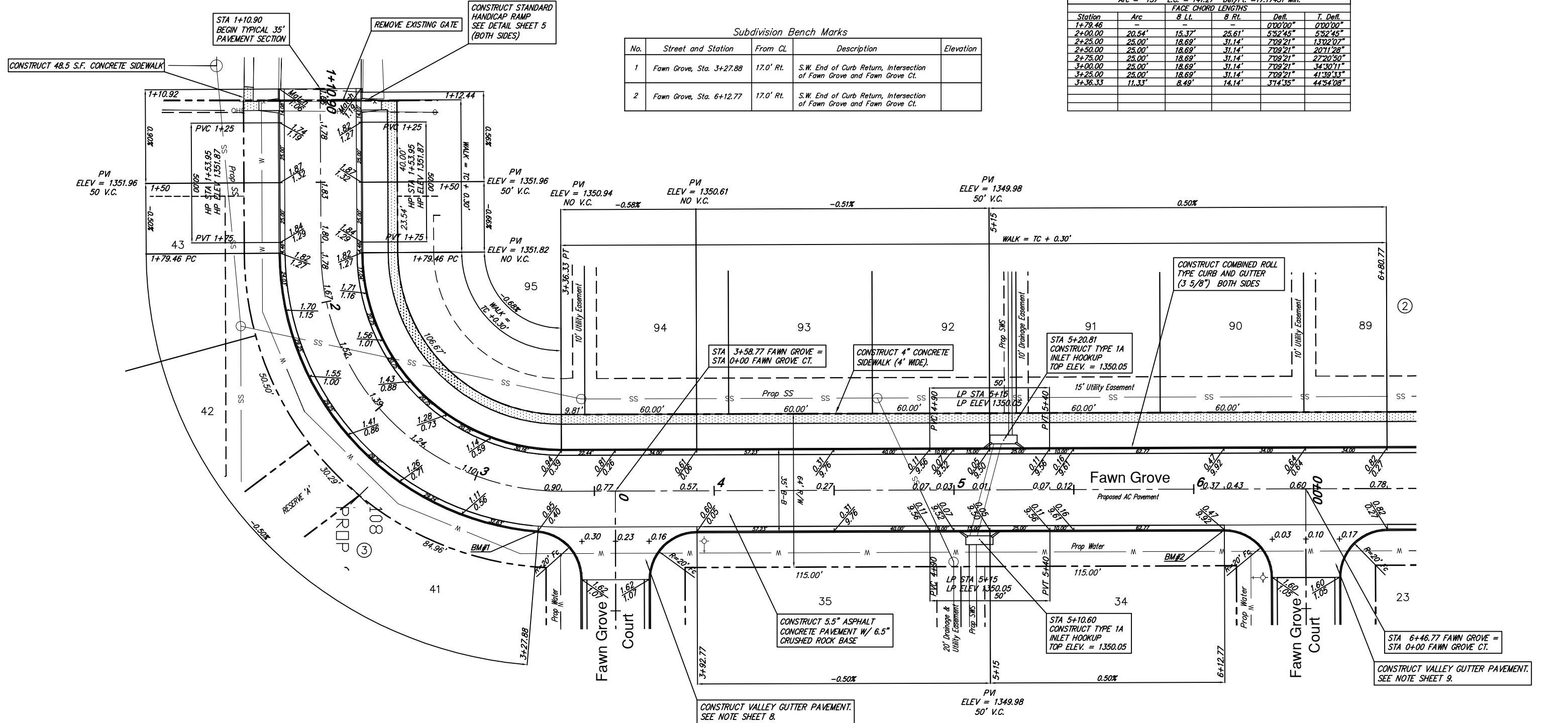
SCALE 1" = 20'

Curve 1  
Curve Data Based on Centerline  
Rad. = 100' Delta = 89° 52' 44" Tangent = 99.79'  
Arc = 157' L.C. = 141.27' Def/Fl. = 17.17431 Min.

Station	Arc	FACE CHORD LENGTHS		Defl.	T. Defl.
		8 Lt.	8 Rt.		
1+79.46	-	-	-	0°00'00"	0°00'00"
2+00.00	20.54'	15.37'	25.61'	5°52'45"	5°52'45"
2+25.00	25.00'	18.69'	31.14'	7°09'21"	13°02'07"
2+50.00	25.00'	18.69'	31.14'	7°09'21"	20°11'28"
2+75.00	25.00'	18.69'	31.14'	7°09'21"	27°20'50"
3+00.00	25.00'	18.69'	31.14'	7°09'21"	34°30'11"
3+25.00	25.00'	18.69'	31.14'	7°09'21"	41°39'33"
3+36.33	11.33'	8.49'	14.14'	3°14'35"	44°54'08"

Subdivision Bench Marks

No.	Street and Station	From CL	Description	Elevation
1	Fawn Grove, Sta. 3+27.88	17.0' Rt.	S.W. End of Curb Return, Intersection of Fawn Grove and Fawn Grove Ct.	
2	Fawn Grove, Sta. 6+12.77	17.0' Rt.	S.W. End of Curb Return, Intersection of Fawn Grove and Fawn Grove Ct.	



Fawn Grove Phase 4  
Fawn Grove  
WICHITA, KANSAS

Ruggles & Bohm, P.A.  
Engineering, Surveying, Land Planning

924 North Main (316) 264-8008  
Wichita, Kansas 67203 (316) 264-4621 fax  
www.rbkansas.com E-mail: info@rbkansas.com

DESIGN EJC  
DRAWN RLS  
REVIEW  
UTILITY  
DATE June 6, 2007

DRAWING FILE paving [Legacy Addition]  
PROJECT NUMBER 472-84576

SHEET 6 OF 32