

# LEGACY 3RD ADDITION STREET IMPROVEMENTS

**44th Street South, from the west line of Lot 6, Block 6, to the east line of Legacy 3rd Addition;  
St. Paul, from the south line of Legacy 3rd Addition to the south line of 44th Street South;  
St. Paul Ct., from the west line of St. Paul to and including cul-de-sac (Lots 1-5, Block 3);  
Chase, from the north line of 44th Street South to the north line of (Lot 1, Block 6);**

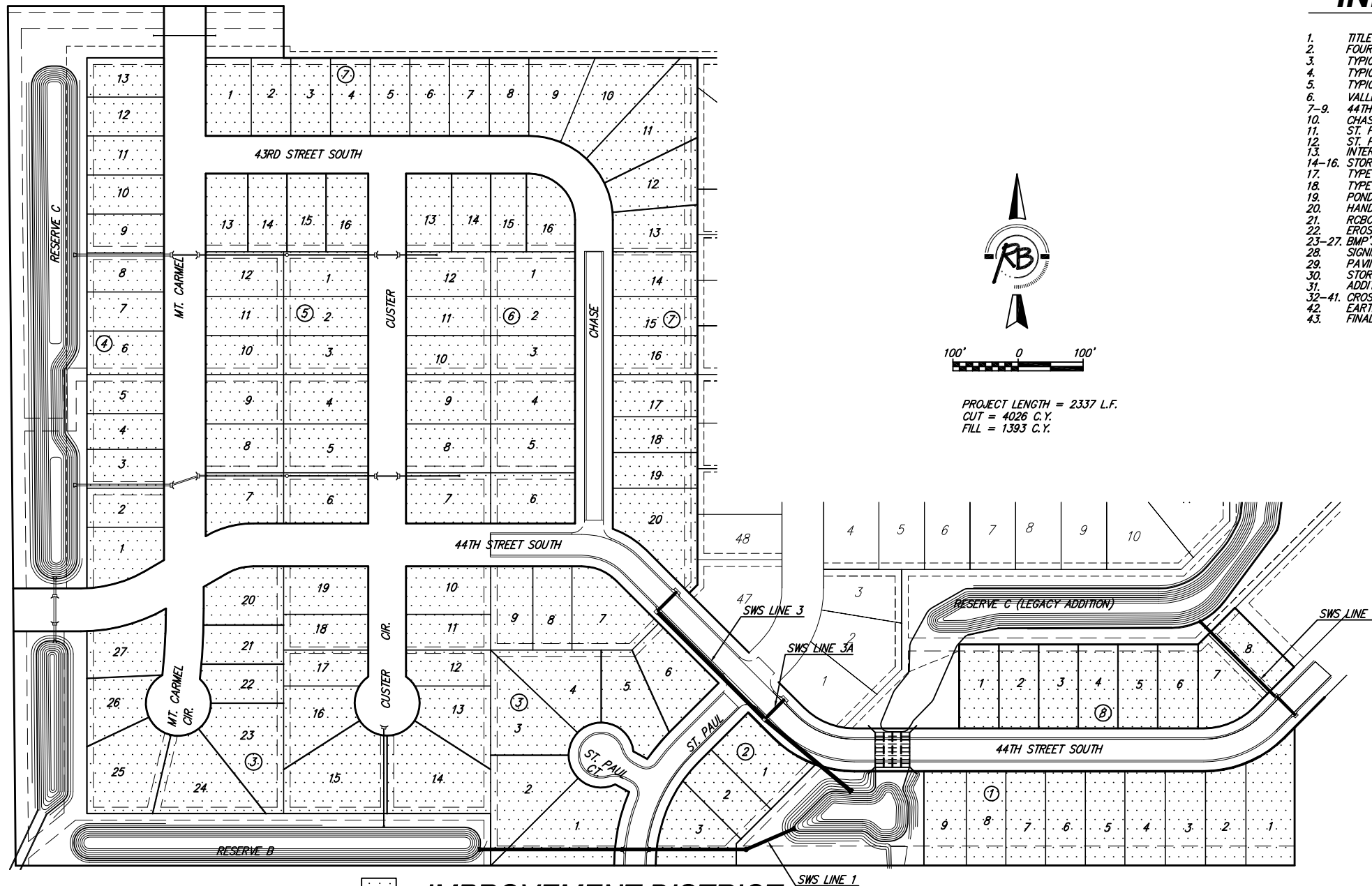
**PROJECT NO. 472-84525  
O.C.A. # 766136**

## GENERAL NOTES

- Contractor will be required to provide a minimum advance notice of forty-eight (48) hours to utility companies prior to starting any excavation as follows:  

|                 |          |
|-----------------|----------|
| Kansas One-Call | 687-2470 |
|-----------------|----------|
- The Contractor must notify the following in case of an emergency:  

|                                   |                |
|-----------------------------------|----------------|
| Cox Communications                | 262-0661       |
| Kansas Gas Service                | 383-8600       |
| Westar                            | 383-8600       |
| Aquila                            | 1-800-303-0357 |
| AT&T                              | 1-800-286-8313 |
| City of Wichita Water Department  | 262-6000       |
| City of Wichita Sewer Maintenance | 262-6000       |
| Conoco Phillips Pipeline          | 681-2081       |
- A saw cut of at least one-half the depth of existing surface courses or one-fourth the depth of existing total pavement thickness shall be provided at locations where proposed construction abuts an existing surface course or pavement for which partial removal of that surface or pavement is required, except when such saw cuts are within three (3) feet of an existing joint the limits of removal shall be extended to the existing joint. Such saw cuts will not be paid for directly and this cost shall be considered as subsidiary to the removal of the surface or pavement.
- Rubble from the removal of miscellaneous structures and excess excavation which is to be wasted shall be disposed of on sites to be provided by the Contractor. These sites shall be approved by the Engineer as to suitability, appearance and site location. Locations that, in the opinion of the Engineer, will leave an unsightly appearance will not be approved.
- All disposal sites must be approved by the Kansas Department of Health and Environment. Material either stockpiled or disposed of in a flood plain would require a Kansas State Board of Agriculture permit. Any material dumped in waters of the United States or wetlands is subject to U.S. Corps permitting regulations. Any material buried or stockpiled beyond approved of Engineers construction limits would require additional archeological investigations unless buried in a previously approved borrow location.
- Limits of earthwork shall match existing ground elevations at the right-of-way line unless otherwise noted on the plans with a new finished grade elevation. When a new finished grade elevation is shown, the earthwork shall extend one foot beyond the right-of-way line and then sloped up or down using permissible slopes to match the existing ground surface.
- The Contractor shall be responsible for preserving property irons. The Contractor will be required to re-establish any property irons which are damaged or destroyed by his construction operations. Such irons shall be re-established by a licensed land surveyor in accordance with state laws.
- The Contractor shall give all property owners and/or tenants of developed property directly abutting the construction of this project a minimum of ten (10) days advance notice prior to start of construction.
- The Contractor shall adjust Water Valve Boxes and Fire Hydrants as directed by the Engineer at the price bid for said adjustments. The Water Department shall field locate water valves one time during construction when requested by the Contractor. It shall be the Contractor's responsibility to preserve such field locations during the construction process. Water valves, water valve boxes or fire hydrants damaged during construction shall be repaired by the Contractor at his own expense.
- Underground utility service lines and overhead utility pole lines are to be adjusted as necessary by others prior to construction unless the plans specifically call for their adjustment by the Contractor or unless the plans specifically identify a utility to be adjusted by its owner during construction. Existing utilities and their location, as shown on the plans, represent the best information obtainable for design. Location information has been obtained from the various utility companies and is either from company record drawings or company-provided field locations. The Contractor will be required to work around existing utilities within the right-of-way which do not conflict with proposed construction.
- The Contractor shall notify pipeline companies at least 24 hours in advance of any work being performed across and/or adjacent to pipelines.
- Trees and shrubs in public right-of-way which are in direct conflict with proposed new construction shall be removed by the Contractor with the Engineer's approval. Trees and shrubs which are not in direct conflict with proposed new construction shall be saved and protected from damage.
- The Contractor shall seed, fertilize and mulch all disturbed areas per City specifications upon completion of construction.
- Subdivision Bench Marks shall be "Flat Survey Markers No. 8134-08 3" top diameter" provided by Kansas Blue Print Co., Inc. Bench mark installation cost to be subsidiary to curb & gutter.
- The right-of-ways for phase 1 streets have been graded to the top of the crushed rock subgrade with the Storm Water Drain project #323. Fine grading will be required before street construction can begin. Bid item for excavation is based on the assumption of 2" of grading over the entire area of the project.



PROJECT LENGTH = 2337 L.F.  
CUT = 4026 C.Y.  
FILL = 1393 C.Y.

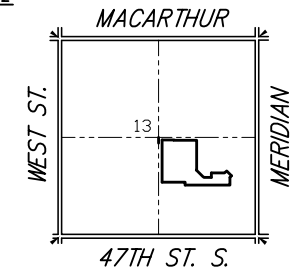
## BENCHMARK

- CITY OF WICHITA BENCH MARK AT MERIDIAN AND 43RD STREET SOUTH, 44 FEET NORTH AND 30 FEET EAST OF THE N.E. CORNER OF THE SE 1/4 OF SECTION 13, T28S, R1W OF THE 6TH P.M. ELEVATION: 1280.80 (M.S.L.)

- T.C. 3' N. END OF EXIST. CURB, 39' E.S.E. OF FH, 7' S.W. OF W.M., IN FRONT OF HOUSE #4498, EAST SIDE OF STREET, CORNER OF ST. PAUL & 44TH ST. S.

## INDEX

- TITLE SHEET
- FOUR CORNER LOT GRADING
- TYPICAL 29" PMT. SECTION
- TYPICAL 35" PMT. SECTION
- TYPICAL 37" PMT. SECTION
- VALLEY GUTTER DETAILS
- 44TH STREET SOUTH
- CHASE
- ST. PAUL CT
- ST. PAUL CT INTERSECTION PLANS
- 14-16. STORM WATER SEWER PLAN/PROFILE
- TYPE 1-A INLET DETAILS
- TYPE 'P' SHALLOW MANHOLE DETAILS
- POND DETAILS
- HANDRAIL DETAILS
- RCBC AUXILIARY DETAILS
- EROSION CONTROL PLANS
- 23-27. BMP'S
- SIGNING DETAILS
- PAVING BUBBLE MAP
- STORM DRAIN BUBBLE MAP
- ADDITION BUBBLE MAP
- 32-41. CROSS SECTIONS
- EARTHWORK CALCULATIONS
- FINAL PLAT



## VICINITY MAP

**IMPROVEMENT DISTRICT  
CITY OF WICHITA, KANSAS  
JAMES ARMOUR, P.E. - CITY ENGINEER**



**Ruggles & Bohm, P.A.**  
Engineering, Surveying, Land Planning  
924 North Main (316) 264-8008  
Wichita, Kansas 67203 (316) 264-4621 fax  
www.rbkansas.com E-mail: info@rbkansas.com