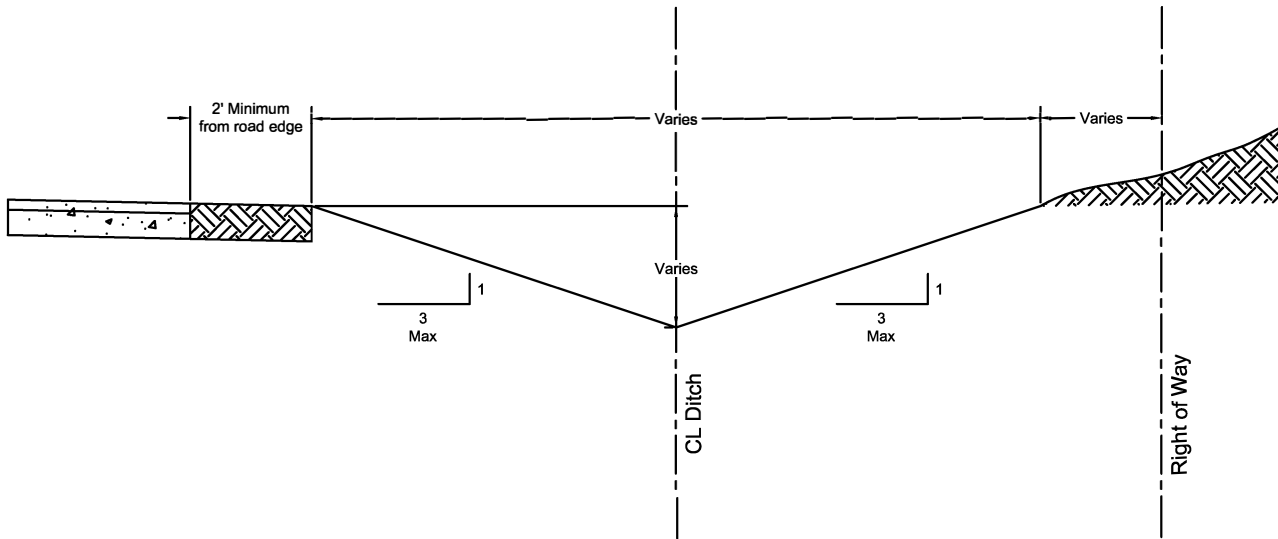



Storm Sewer Repair General Notes

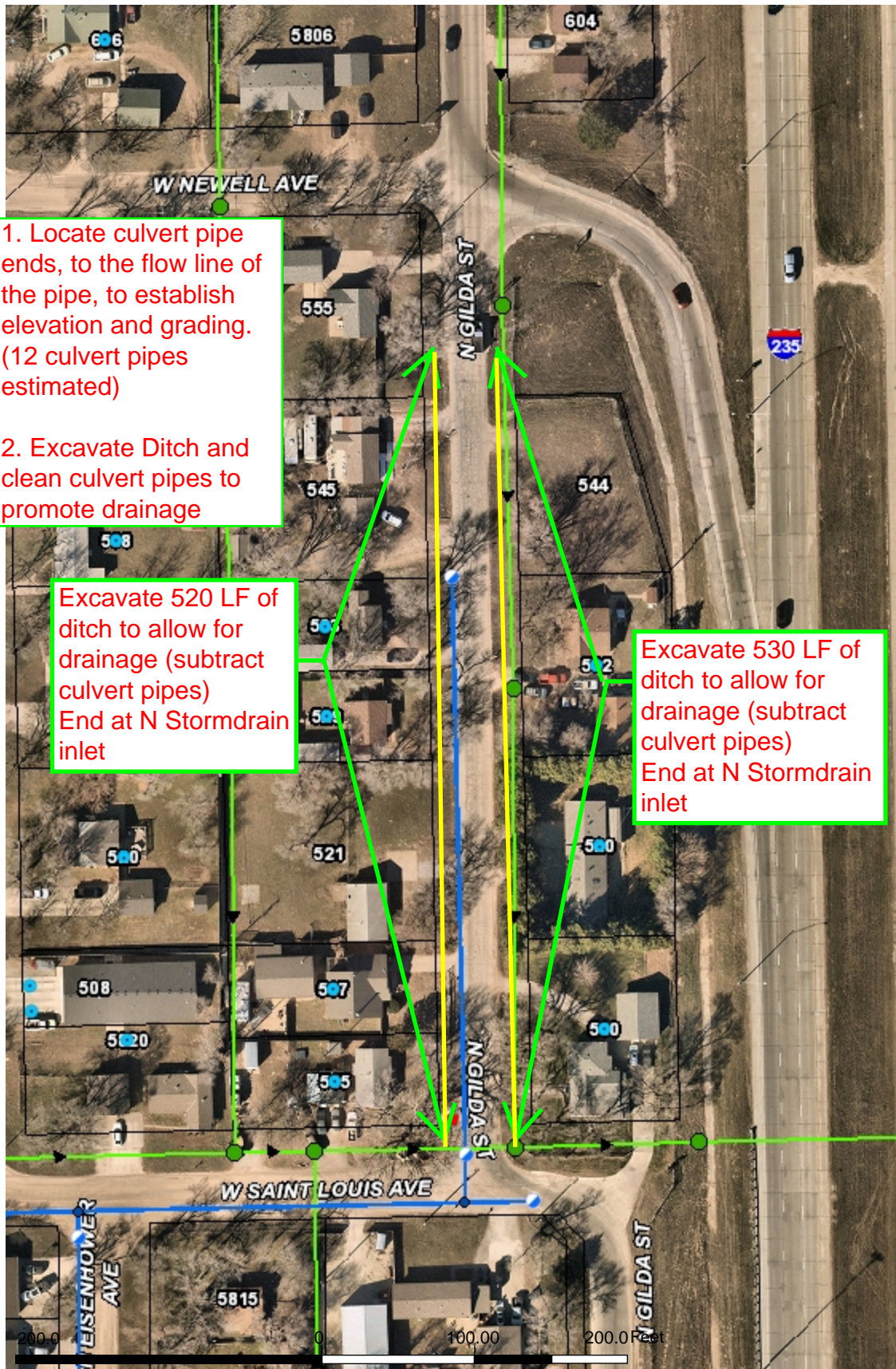
1. Any existing elevations, depths, lengths, sizes, materials and descriptions that may be shown on plan sheets are for information only. The Contractor will field verify these items prior to construction. Proposed curb and gutter elevations will match existing curb and gutter elevations.
2. The Contractor will field verify horizontal and vertical locations of all existing utilities prior to construction. Any conflicting utilities will be adjusted prior to construction by the utility owners, unless otherwise stated on the plans.
3. Any existing features that are damaged by construction including existing drainage structures or pipes, roof drains, pavement, utility lines, utility service lines, pavement markings, and driveways curb & gutter, sidewalks, and irrigation systems will be repaired or replaced at contractor's expense.
4. Any items that need repairs or relocation will be approved by the Engineer prior to construction.
5. Flow of a minimum of one lane of traffic must be maintained in all instances. Additionally, all work in the right-of-way or near expected traffic shall conform to the guidelines and rules of the "Manual of Uniform Traffic Control Devices".



TYPICAL ROAD SIDE DITCH SECTION
 Not to Scale

Not all locations will allow for 3:1 slope. Please contact project engineer for approval of slope greater than 3:1.

 CITY OF WICHITA PUBLIC WORKS & UTILITIES ENGINEERING DIVISION	<i>ROAD SIDE DITCH SECTION</i>		
	<small>CITY ENGINEER</small> JOSEPH HICKLE, P.E.		
	<small>PROJECT NUMBER</small>	<small>DCA NUMBER</small>	<small>DATE</small> 08/2023
	<small>STORMWATER MANAGEMENT</small>		<small>SHEET</small>
CITY HALL - EIGHTH FLOOR 455 NORTH MAIN STREET WICHITA, KANSAS 67202-1620 (316) 268-4496			



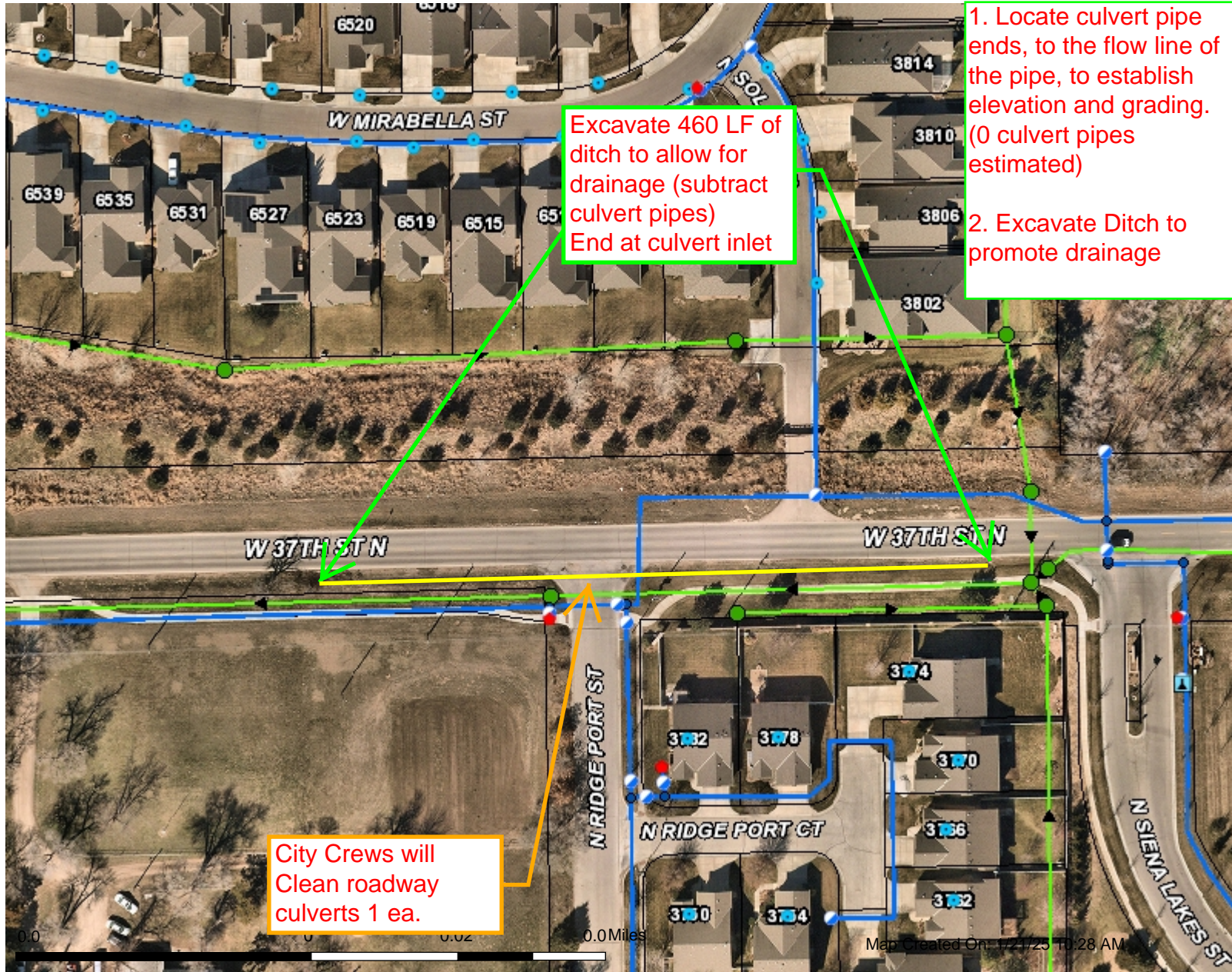
Legend

- Parcels
 - Sewer Manholes
 - Abandoned Sewer Manholes
 - Sewer Mains
 - Abandoned Sewer Mains
- Sewer PM Areas**
- <all other values>
 - <Null>
 - 4MC-01 RT01 5YR
 - 4MC-02 RT01 5YR
 - 4MC-02 RT01 8YR
 - 4MC-02 RT02 5YR
 - 4MC-02 RT02 8YR
 - 4MC-02 RT03 8YR
 - 4MC-02 RT04 8YR
 - 4MC-02 RT05 8YR
 - 4MC-02 RT06 8YR
 - 4MC-02 RT07 8YR
 - 4MC-03 RT01 8YR
 - 4MC-03 RT02 8YR
 - 4MC-03 RT03 8YR
 - 4MC-03 RT04 8YR
 - 4MC-03 RT05 8YR
 - 4MC-03 RT06 8YR
 - 4MC-03 RT07 8YR
 - 4MC-BH RT01 8YR
 - 4MC-BH RT02 8YR
 - 4MC-BH RT03 8YR
 - 4MC-BH RT04 8YR
 - 4MC-BH RT05 8YR
 - 4MC-BH RT06 8YR
 - 4MC-BH RT07 8YR
 - 4MC-CV RT01 5YR
 - 4MC-CV RT01 8YR
 - 4MC-CV RT02 5YR
 - 4MC-CV RT02 8YR
 - 4MC-CV RT03 5YR
 - 4MC-CV RT03 8YR
 - 4MC-CV RT04 5YR

1 : 1,200



This information is not an official record, and cannot be used as such. The user should rely only upon official records available from the custodian of records in the appropriate City and/or County department. Some data provided here and used for the preparation of these maps has been obtained from public records not created or maintained by the City of Wichita.



Legend

- Parcels
- Sewer Manholes
- Abandoned Sewer Manholes
- Sewer Mains
- Abandoned Sewer Mains

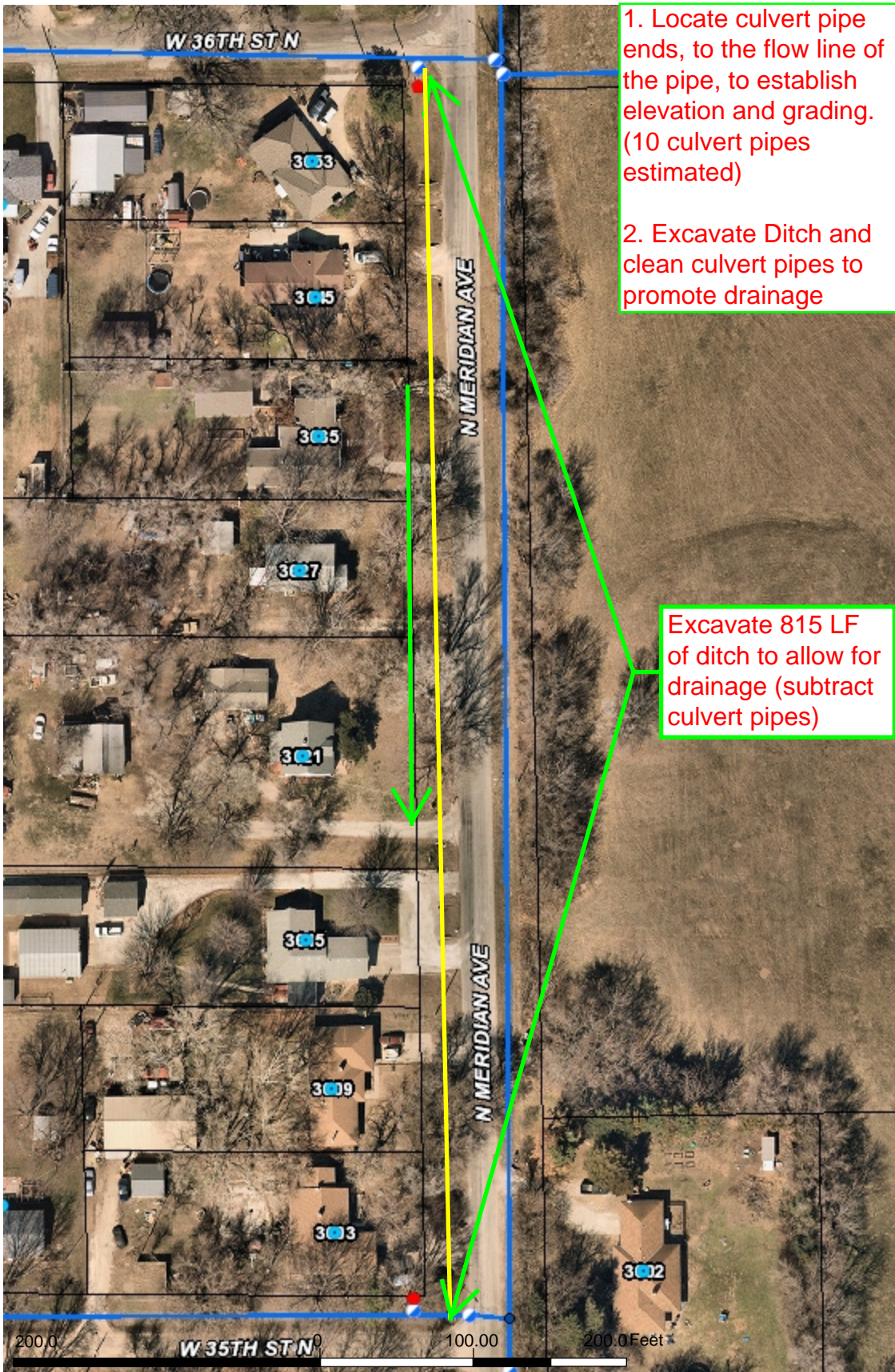
Sewer PM Areas

- <all other values>
- <Null>
- 4MC-01 RT01 5YR
- 4MC-02 RT01 5YR
- 4MC-02 RT01 8YR
- 4MC-02 RT02 5YR
- 4MC-02 RT02 8YR
- 4MC-02 RT03 8YR
- 4MC-02 RT04 8YR
- 4MC-02 RT05 8YR
- 4MC-02 RT06 8YR
- 4MC-02 RT07 8YR
- 4MC-03 RT01 8YR
- 4MC-03 RT02 8YR
- 4MC-03 RT03 8YR
- 4MC-03 RT04 8YR
- 4MC-03 RT05 8YR
- 4MC-03 RT06 8YR
- 4MC-03 RT07 8YR
- 4MC-BH RT01 8YR
- 4MC-BH RT02 8YR
- 4MC-BH RT03 8YR
- 4MC-BH RT04 8YR
- 4MC-BH RT05 8YR
- 4MC-BH RT06 8YR

This information is not an official record, and cannot be used as such. The user should rely only upon official records available from the custodian of records in the appropriate City and/or County department. Some data provided here and used for the preparation of these maps has been obtained from public records not created or maintained by the City of Wichita.

1: 1,200





1. Locate culvert pipe ends, to the flow line of the pipe, to establish elevation and grading. (10 culvert pipes estimated)

2. Excavate Ditch and clean culvert pipes to promote drainage

Excavate 815 LF of ditch to allow for drainage (subtract culvert pipes)

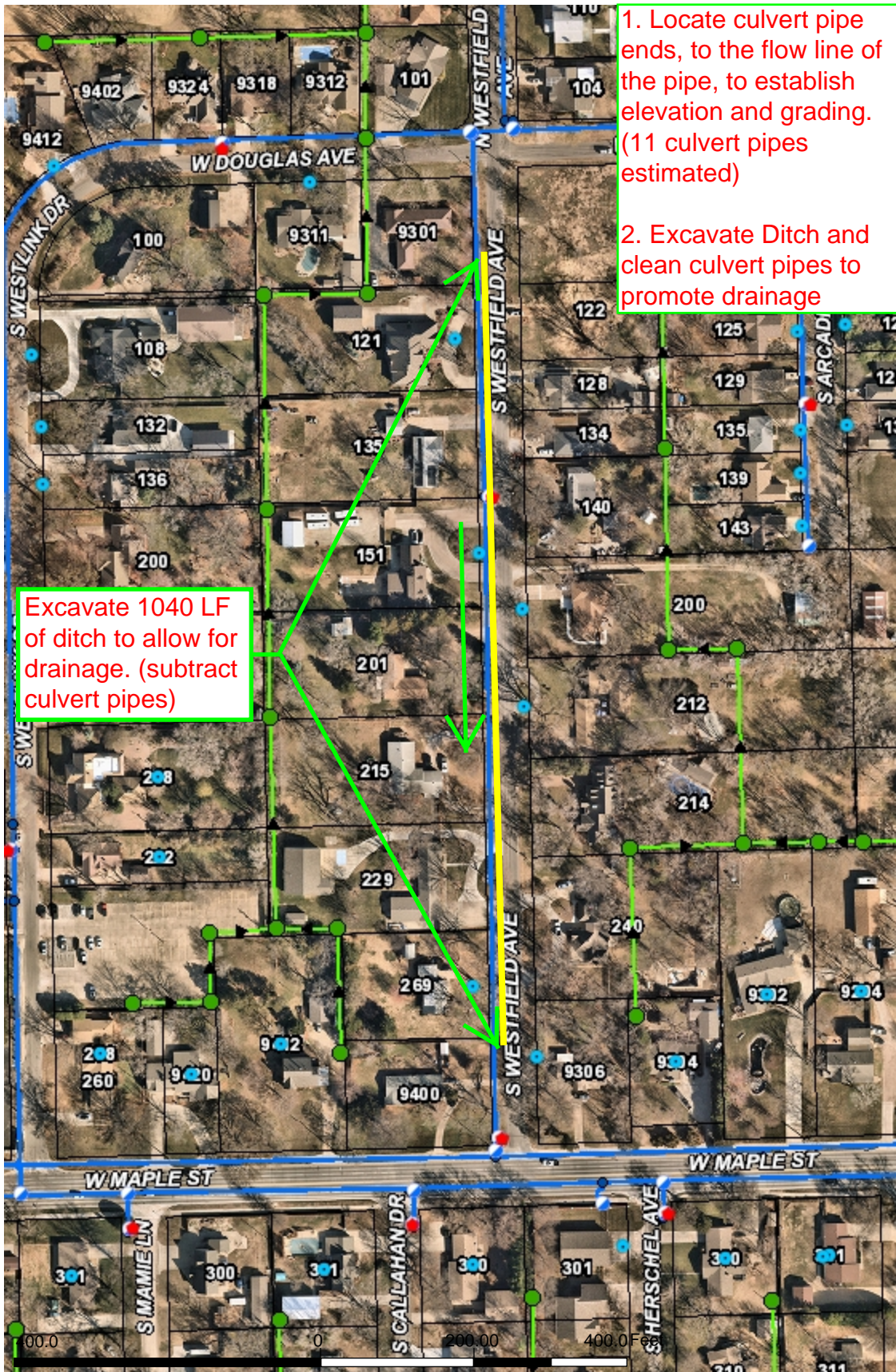
Legend

- Parcels
- Water Sample Stations
- Water Hydrants
- Water Valves
- Abandoned Water Valves
- Water Service Taps
- Backflow Devices
- Water Nodes
- Water Mains**
 - <all other values>
 - Private
 - Abandoned Water Mains
- Dialysis Services
- Sewer Manholes
- Abandoned Sewer Manholes
- Sewer Mains
- Abandoned Sewer Mains
- Sewer PM Areas**
 - <all other values>
 - <Null>
 - 4MC-01 RT01 5YR
 - 4MC-02 RT01 5YR
 - 4MC-02 RT01 8YR
 - 4MC-02 RT02 5YR
 - 4MC-02 RT02 8YR
 - 4MC-02 RT03 8YR
 - 4MC-02 RT04 8YR
 - 4MC-02 RT05 8YR
 - 4MC-02 RT06 8YR
 - 4MC-02 RT07 8YR
 - 4MC-03 RT01 8YR
 - 4MC-03 RT02 8YR
 - 4MC-03 RT03 8YR
 - 4MC-03 RT04 8YR
 - 4MC-03 RT05 8YR
 - 4MC-03 RT06 8YR
 - 4MC-03 RT07 8YR
 - 4MC-BH RT01 8YR
 - 4MC-BH RT02 8YR

1:1,200



This information is not an official record, and cannot be used as such. The user should rely only upon official records available from the custodian of records in the appropriate City and/or County department. Some data provided here and used for the preparation of these maps has been obtained from public records not created or maintained by the City of Wichita.



1. Locate culvert pipe ends, to the flow line of the pipe, to establish elevation and grading. (11 culvert pipes estimated)

2. Excavate Ditch and clean culvert pipes to promote drainage

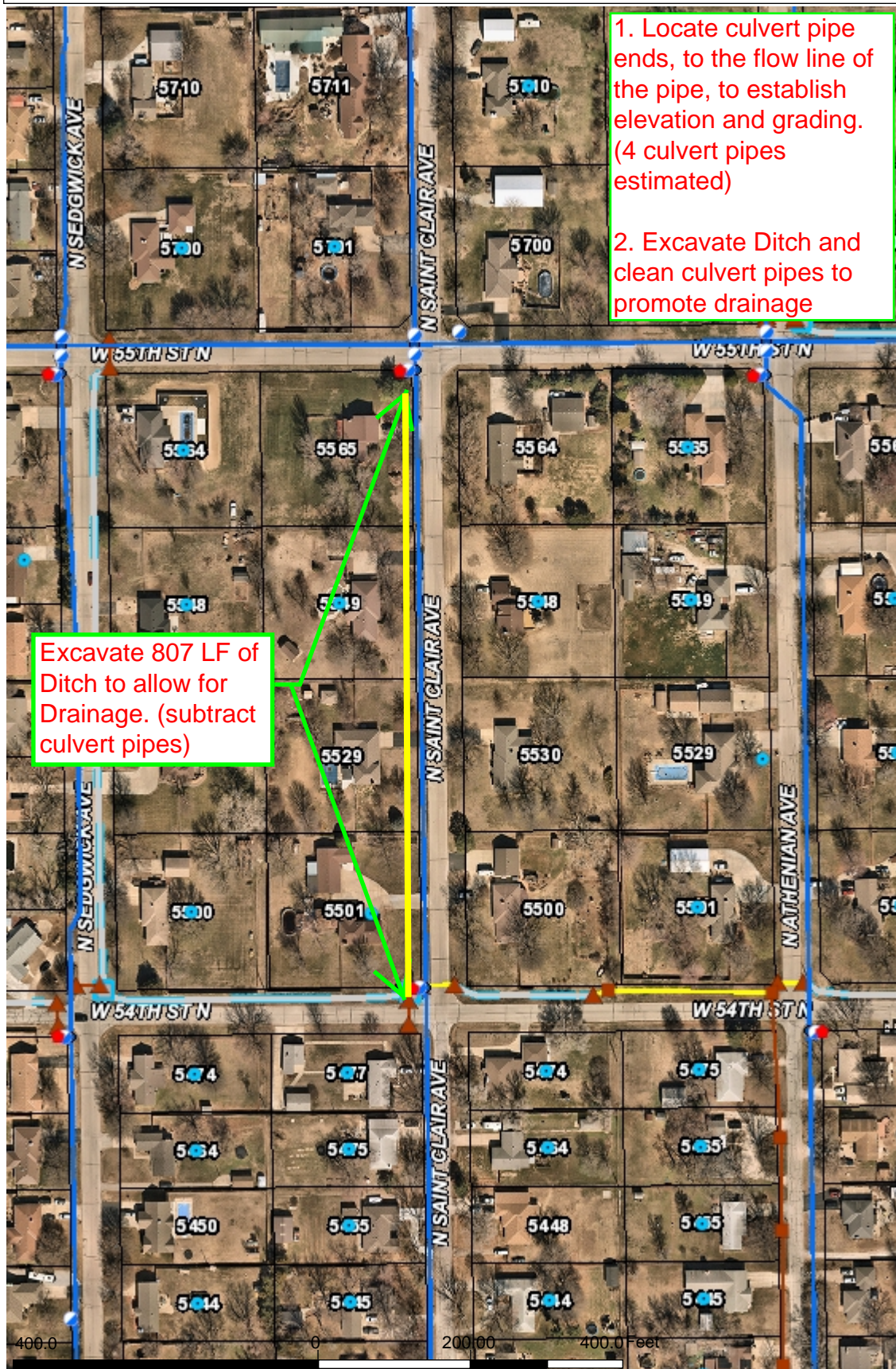
Excavate 1040 LF of ditch to allow for drainage. (subtract culvert pipes)

Legend

- Parcels
- Water Sample Stations
- Water Hydrants
- Water Valves
- Abandoned Water Valves
- Water Service Taps
- Backflow Devices
- Water Nodes
- Water Mains**
- <all other values>
- Private
- Abandoned Water Mains
- Dialysis Services
- Sewer Manholes
- Abandoned Sewer Manholes
- Sewer Mains
- Abandoned Sewer Mains
- Sewer PM Areas**
- <all other values>
- <Null>
- 4MC-01 RT01 5YR
- 4MC-02 RT01 5YR
- 4MC-02 RT01 8YR
- 4MC-02 RT02 5YR
- 4MC-02 RT02 8YR
- 4MC-02 RT03 8YR
- 4MC-02 RT04 8YR
- 4MC-02 RT05 8YR
- 4MC-02 RT06 8YR
- 4MC-02 RT07 8YR
- 4MC-03 RT01 8YR
- 4MC-03 RT02 8YR
- 4MC-03 RT03 8YR
- 4MC-03 RT04 8YR
- 4MC-03 RT05 8YR
- 4MC-03 RT06 8YR
- 4MC-03 RT07 8YR
- 4MC-BH RT01 8YR
- 4MC-BH RT02 8YR

1: 2,400





1. Locate culvert pipe ends, to the flow line of the pipe, to establish elevation and grading. (4 culvert pipes estimated)

2. Excavate Ditch and clean culvert pipes to promote drainage

Excavate 807 LF of Ditch to allow for Drainage. (subtract culvert pipes)

Legend

- Parcels
- Storm Structures
 - Manhole
 - Inlet
 - ▲ Outfall
 - ◆ Other
- Headwalls
- City BMPs
- Private Non-City BMPs
- Pole Video
- Televised Conduit
- Storm Conduit
- Open Channel Structures
- Open Channel Conduit
- Abandoned Storm Structures
 - ⊗ Storm
 - ⊗ Open Channel
- Abandoned Storm Conduit
 - - Storm
 - - Open Channel
- COE Stations
- Levee
 - C_lower
 - C_middle
 - C_upper
 - D_Chism
 - D_Cowskin
 - F
 - J
 - K
 - L
 - M
 - M_Training
 - N
 - P
 - P_Design
 - P_MF
 - P_MF_trib
 - P_River

1: 2,400

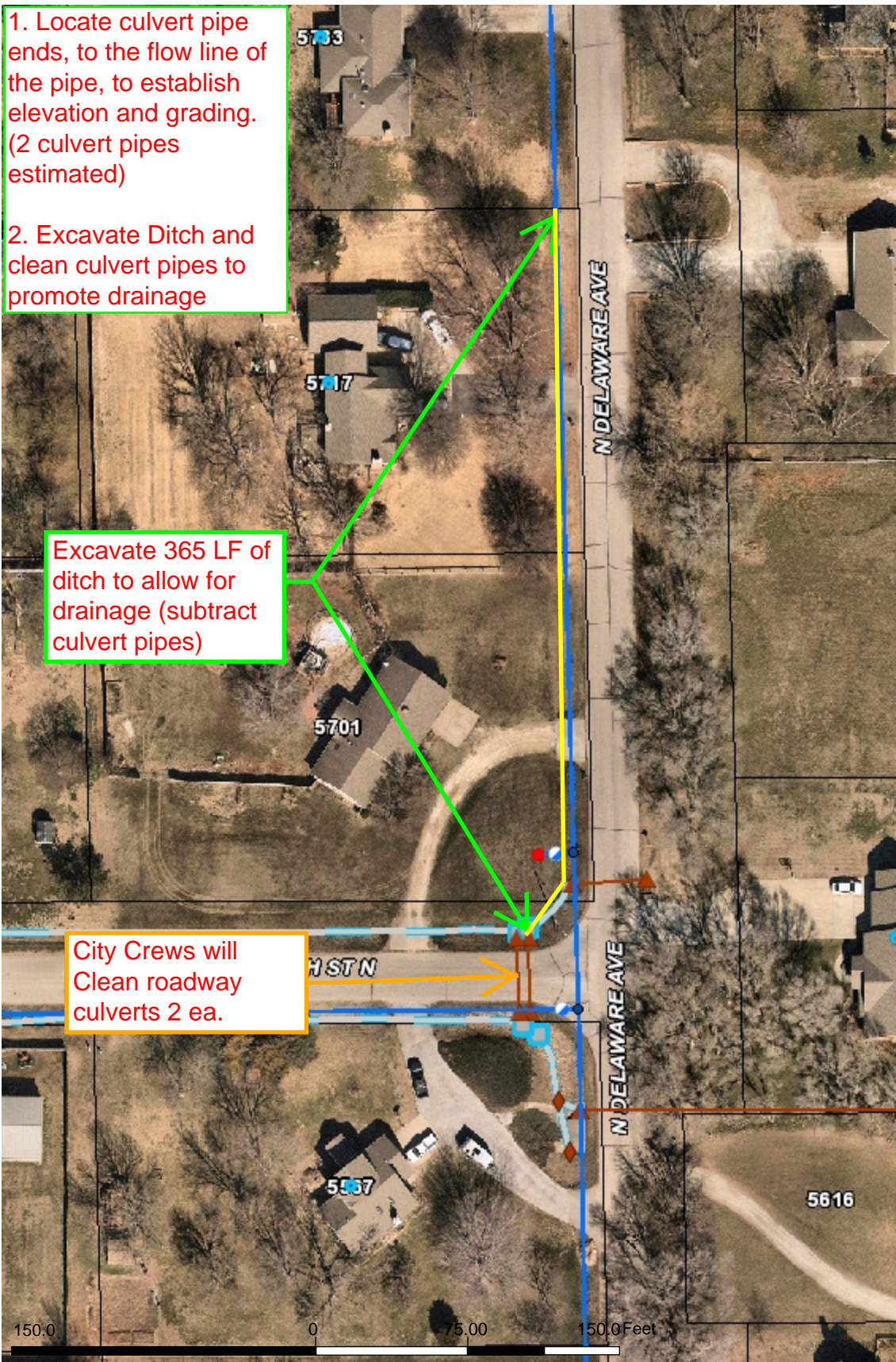


1. Locate culvert pipe ends, to the flow line of the pipe, to establish elevation and grading. (2 culvert pipes estimated)

2. Excavate Ditch and clean culvert pipes to promote drainage

Excavate 365 LF of ditch to allow for drainage (subtract culvert pipes)

City Crews will Clean roadway culverts 2 ea.



Legend

- Parcels
- Storm Structures**
 - Manhole
 - Inlet
 - ▲ Outfall
 - ◆ Other
- Headwalls
- ☑ City BMPs
- ☒ Private Non-City BMPs
- Pole Video
- Televised Conduit
- Storm Conduit
- ☑ Open Channel Structures
- Open Channel Conduit
- Abandoned Storm Structures**
 - ⊗ Storm
 - ☑ Open Channel
- Abandoned Storm Conduit**
 - - Storm
 - - Open Channel
- **COE Stations**
- Levee**
 - C_lower
 - C_middle
 - C_upper
 - D_Chism
 - D_Cowskin
 - F
 - J
 - K
 - L
 - M
 - M_Training
 - N
 - P
 - P_Design
 - P_MF
 - P_MF_trib
 - P_River

1: 900



This information is not an official record, and cannot be used as such. The user should rely only upon official records available from the custodian of records in the appropriate City and/or County department. Some data provided here and used for the preparation of these maps has been obtained from public records not created or maintained by the City of Wichita.