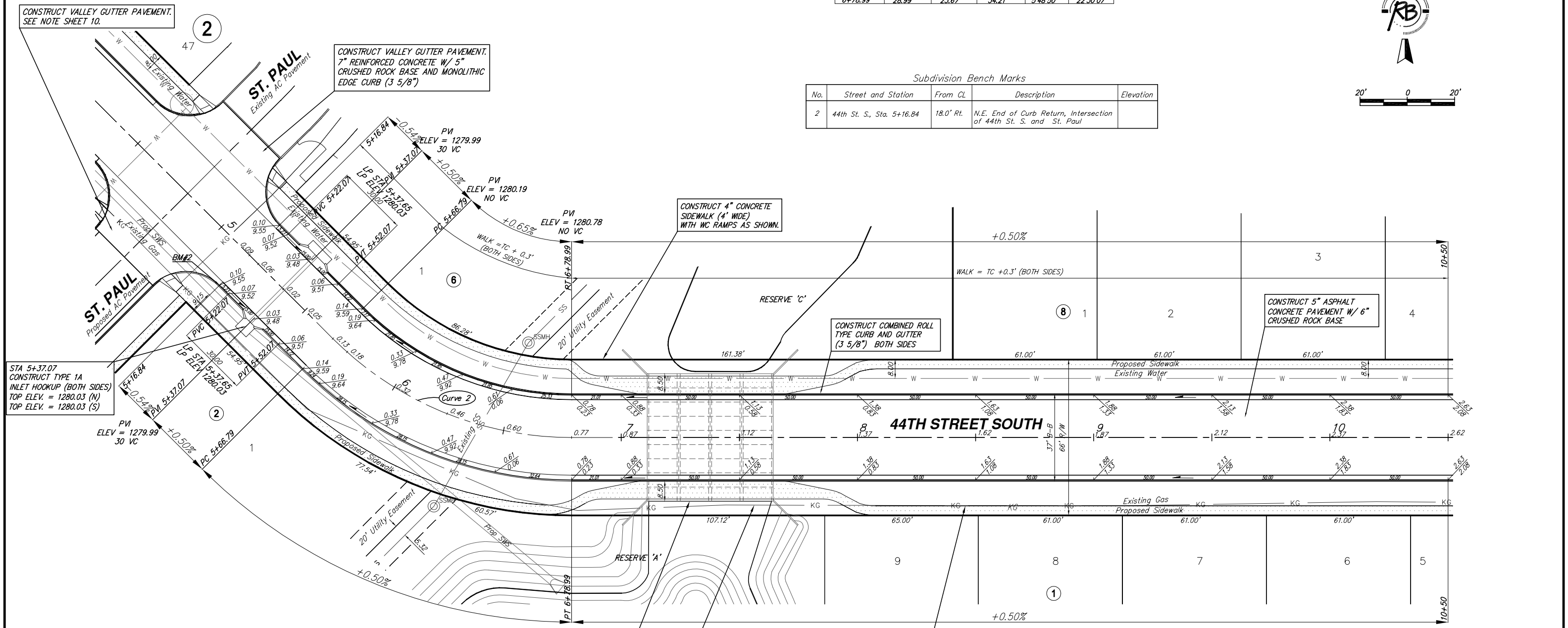
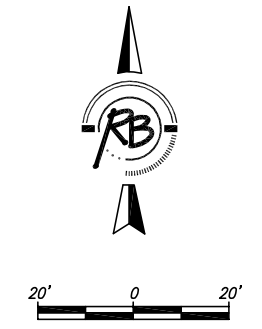


**Curve #2**  
Curve Data Based on Centerline  
Rad. = 142.85' Delta = 45°00'00" Tangent = 59.17'  
Arc = 112.19' L.C. = 109.33' Def/Ft. = 12.03316 Min.

Station	Arc	FACE CHORD LENGTHS			
		8 Lt.	8 Rt.	Defl.	T. Defl.
5+66.79	-	-	-	0'00'00"	0'00'00"
5+75.00	8.21'	6.72'	9.70'	1'38'47"	1'38'47"
6+00.00	25.00'	20.42'	29.51'	5'00'50"	6'39'37"
6+25.00	25.00'	20.42'	29.51'	5'00'50"	11'40'27"
6+50.00	25.00'	20.42'	29.51'	5'00'50"	16'41'17"
6+78.99	28.99'	23.67'	34.21'	5'48'50"	22'30'07"

**Subdivision Bench Marks**

No.	Street and Station	From CL	Description	Elevation
2	44th St. S., Sta. 5+16.84	18.0' Rt.	N.E. End of Curb Return, Intersection of 44th St. S. and St. Paul	



CONSTRUCT VALLEY GUTTER PAVEMENT. SEE NOTE SHEET 10.

CONSTRUCT VALLEY GUTTER PAVEMENT. 7" REINFORCED CONCRETE W/ 5" CRUSHED ROCK BASE AND MONOLITHIC EDGE CURB (3 5/8")

CONSTRUCT 4" CONCRETE SIDEWALK (4' WIDE) WITH WC RAMPS AS SHOWN.

CONSTRUCT COMBINED ROLL TYPE CURB AND GUTTER (3 5/8") BOTH SIDES

CONSTRUCT 5" ASPHALT CONCRETE PAVEMENT W/ 6" CRUSHED ROCK BASE

STA 5+37.07  
CONSTRUCT TYPE 1A INLET HOOKUP (BOTH SIDES)  
TOP ELEV. = 1280.03 (N)  
TOP ELEV. = 1280.03 (S)

PROPOSED 4 - 3'X12" RCBC SEE SHEETS 18 & 19

CONSTRUCT 4" CONCRETE SIDEWALK (4' WIDE) WITH WC RAMPS AS SHOWN.

CAUTION!! EXISTING GAS LINE. CONTRACTOR TO COORDINATE WITH KANSAS GAS SERVICE PRIOR TO CONSTRUCTION.

Legacy 3rd Addition  
44th Street South  
WICHITA, KANSAS

**Ruggles & Bohm, P.A.**  
Engineering, Surveying, Land Planning

924 North Main  
Wichita, Kansas 67203  
www.rbkansas.com

(316) 264-8008  
(316) 264-4621 fax  
E-mail: info@rbkansas.com

DESIGN: KWL  
DRAWN: RLS  
REVIEW: [blank]  
UTILITY: [blank]  
DATE: Feb. 9, 2007

DRAWING FILE: paving {Legacy Addition} PROJECT NUMBER: 472-84525

SHEET: 8 OF 43