

STA 0+05.40 LINE 1  
 BEGIN CONSTRUCTION OF 24" RCP  
 W/ END SECTION.  
 PLACE 34 S.Y. LIGHT STONE RIP-RAP.  
 CONTRACTOR TO FIELD FIT END  
 SECTION TO ASBUILT POND.

STA 0+86.52, LINE 1  
 CONSTRUCT SHALLOW  
 TYPE "P" MH  
 W/BEEHIVE FRAME & GRATE  
 DIAMETER = 5.0'  
 TOP ELEV = 1280.82

STA 2+35.72, LINE 1 =  
 ST. PAUL STA 3+17.73, 18.84' RT F.I.F.  
 CONSTRUCT TYPE 1A INLET  
 5'x3'  
 TOP ELEV = 1281.00

STA 2+76.59, LINE 1 =  
 ST. PAUL STA 3+17.73, 18.84' LT F.I.F.  
 CONSTRUCT TYPE 1A INLET  
 5'x3'  
 TOP ELEV = 1281.00

STA 4+97.02 LINE 1  
 END CONSTRUCTION OF 24" RCP  
 W/ END SECTION. CONTRACTOR TO  
 FIELD FIT END SECTION TO ASBUILT  
 POND.

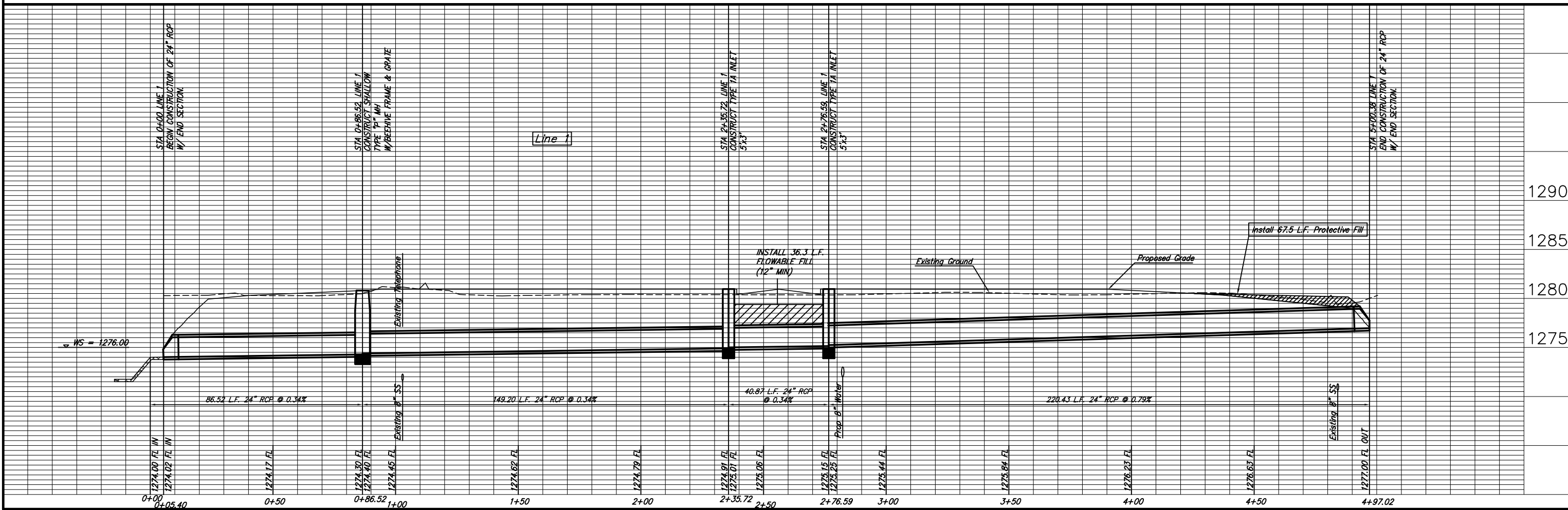
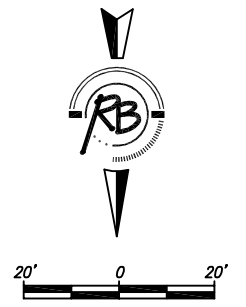
CAUTION!! CONTRACTOR TO  
 COORDINATE WITH AT&T  
 PRIOR TO CONSTRUCTION.

STA 2+37.23 TO STA 2+75.09  
 INSTALL FLOWABLE FILL

REMOVE TREES AS NECESSARY FOR  
 STORM DRAIN CONSTRUCTION. TO BE  
 INCLUDED AS LUMP SUM ITEM ON BID  
 SHEET UNDER CLEARING AND  
 RESTORATION

UNPLATTED

LEGACY 3RD ADDITION



PROJECT NUMBER	472-8425
DRAWING FILE	SWS (SWS Line 1)
DESIGN	EJG
REVIEW	RLS
DATE	Feb. 19, 2007
UTILITY	
REVISION	
LEGACY 3RD ADDITION	
Storm Water Sewer	
WICHITA, KANSAS	
RB JOB	3011E
SHEET	14
OF	43