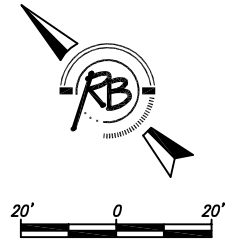
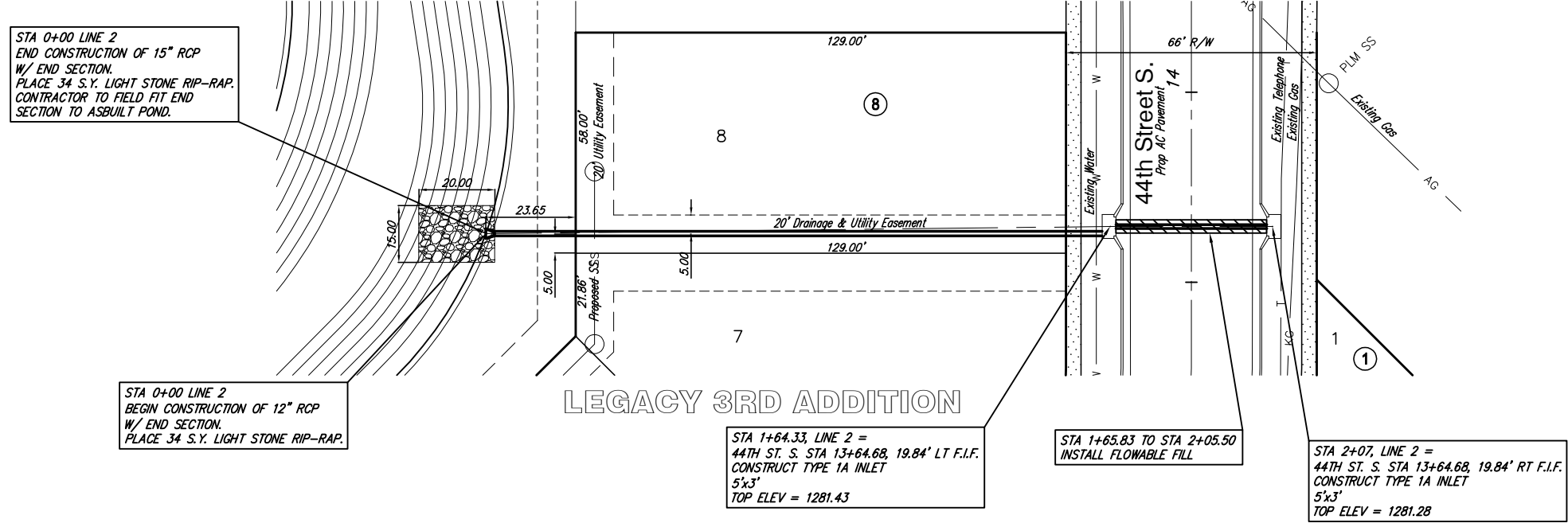


LEGACY 2ND ADDITION



STA 0+00 LINE 2
END CONSTRUCTION OF 15" RCP
W/ END SECTION.
PLACE 3/4 S.Y. LIGHT STONE RIP-RAP.
CONTRACTOR TO FIELD FIT END
SECTION TO ASBUILT POND.

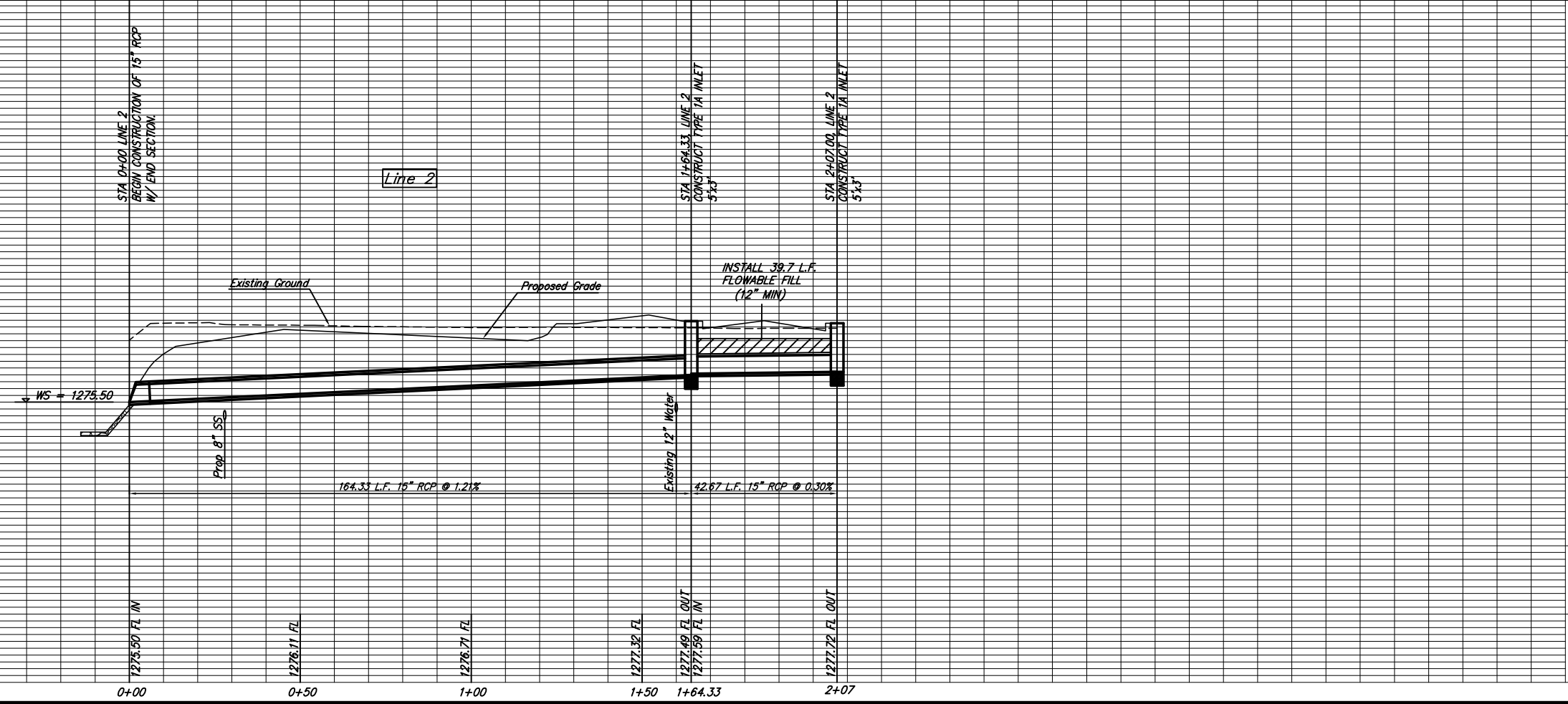
STA 0+00 LINE 2
BEGIN CONSTRUCTION OF 12" RCP
W/ END SECTION.
PLACE 3/4 S.Y. LIGHT STONE RIP-RAP.

LEGACY 3RD ADDITION

STA 1+64.33, LINE 2 =
44TH ST. S. STA 13+64.68, 19.84' LT F.I.F.
CONSTRUCT TYPE 1A INLET
5'x3'
TOP ELEV = 1281.43

STA 1+65.83 TO STA 2+05.50
INSTALL FLOWABLE FILL

STA 2+07, LINE 2 =
44TH ST. S. STA 13+64.68, 19.84' RT F.I.F.
CONSTRUCT TYPE 1A INLET
5'x3'
TOP ELEV = 1281.28



1290	REVIEW	REVIEW
1285	DRAWN	DATE
1280	RLS	Feb. 19, 2007
1275	DESIGN	UTILITY
1270	EJG	
	PROJECT NUMBER	472-84525
	DRAWING FILE	SWS (SWS Line 1)

LEGACY 3RD ADDITION
Storm Water Sewer
WICHITA, KANSAS

Ruggles & Bohm, P.A.
Engineering, Surveying, Land Planning
1000 Main Street
Wichita, Kansas 67202
www.ruggles.com