

STORM WATER SEWER #633

TO SERVE LOT 5, BLK 1, REED COMMERCIAL ADDITION

PROJECT NUMBER 468-84399 OCA# 751455

GENERAL NOTES

- Contractor will be required to provide a minimum advance notice of forty-eight (48) hours to utility companies prior to starting any excavation as follows:

Kansas One-Call 687-2470

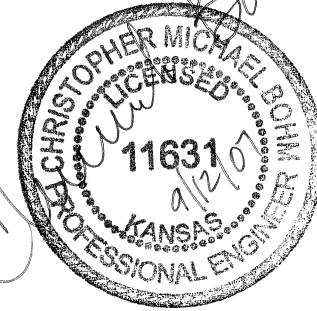
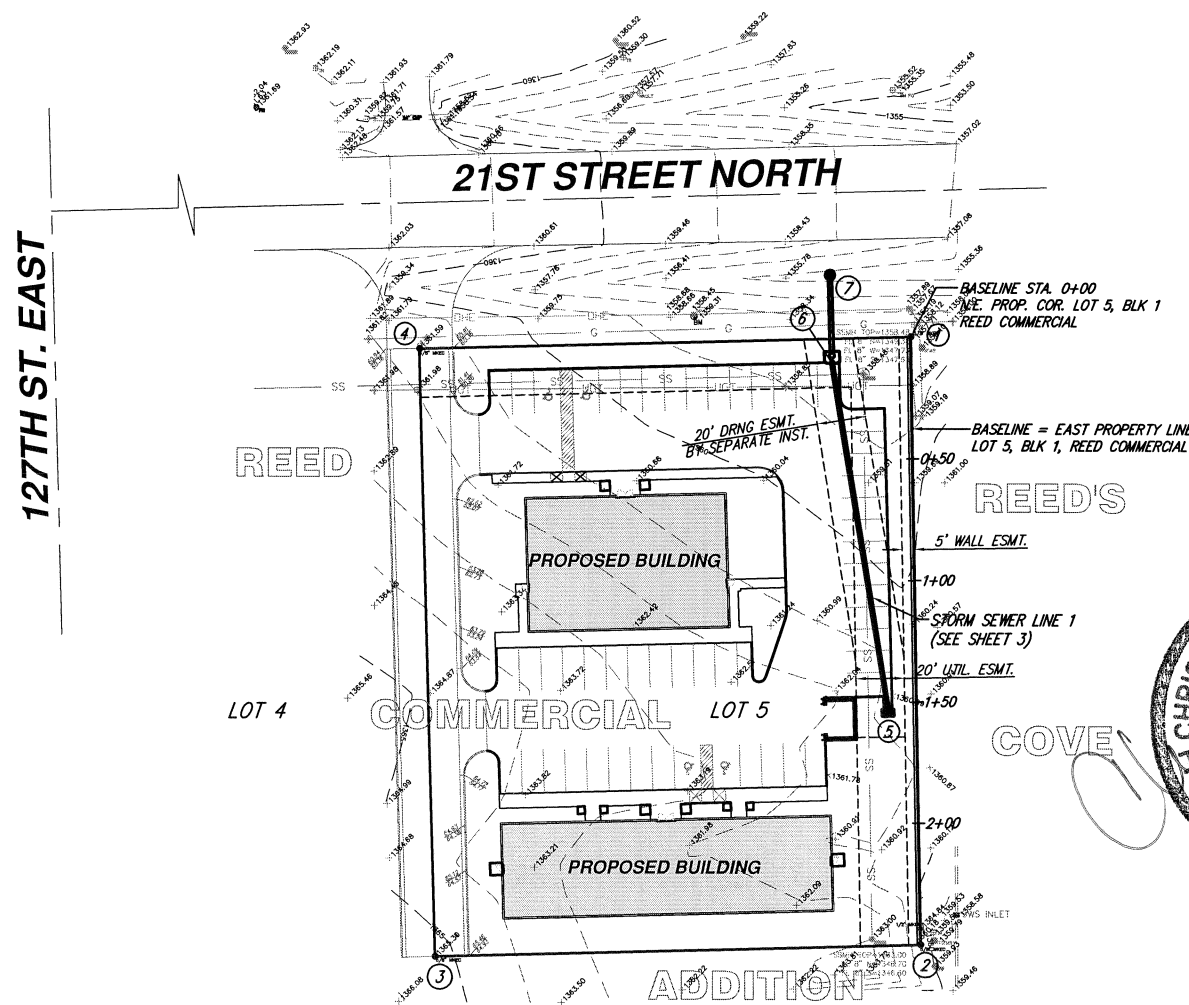
The Contractor must notify the following in case of an emergency:

Cox Communications 262-0661
 Kansas Gas Service 383-8600
 Westar 383-8600
 Aquila Energy 1-800-303-0357
 Southwestern Bell Telephone Company 1-800-286-8313
 City of Wichita Water Department 262-6000
 City of Wichita Sewer Maintenance 262-6000

- Existing utilities and their location, as shown on the plans, represent the best information obtainable for design. Location information has been obtained from the various utility companies and is either from company record drawings or company-provided field locations. The Contractor will be required to work around existing utilities within the right-of-way which do not conflict with proposed construction.
- This project is to be constructed in accordance with City of Wichita Standard Specifications for the Construction of City Projects, and Policy on Construction of Public Works Improvements by Private Contract.
- No work shall begin on this project before required bonds are submitted to the City of Wichita, and the project inspector has been notified.
- All areas of public R/W disturbed by construction of this project are to be restored in accordance with Administrative Regulation AR 7B of the City of Wichita.
- Trench backfill to be compacted to minimum of 98% std. density (ASTM D-698) to existing grade.
- Traffic will not be affected by construction of this project.

COORDINATE CONTROL TABLE

CONTROL NO.	DESCRIPTION	NORTHING	EASTING
1	N.E. COR. LOT 5, BLK 1 5/8" MKEC	1699835.38	1692641.21
2	S.E. COR. LOT 5, BLK 1 5/8" MKEC	1699585.40	1692644.96
3	S.W. COR. LOT 5, BLK 1 5/8" MKEC	1699580.31	1692445.00
4	N.W. COR. LOT 5, BLK 1 5/8" MKEC	1699830.28	1692438.73
5	CENTER 4' X 2' DROP INLET	1699681.04	1692631.54
6	FRONT INSIDE FACE TYPE I INLET	1699824.56	1692608.76
7	CENTER MH W/ BEEHIVE INLET TOP	1699860.65	1692607.85



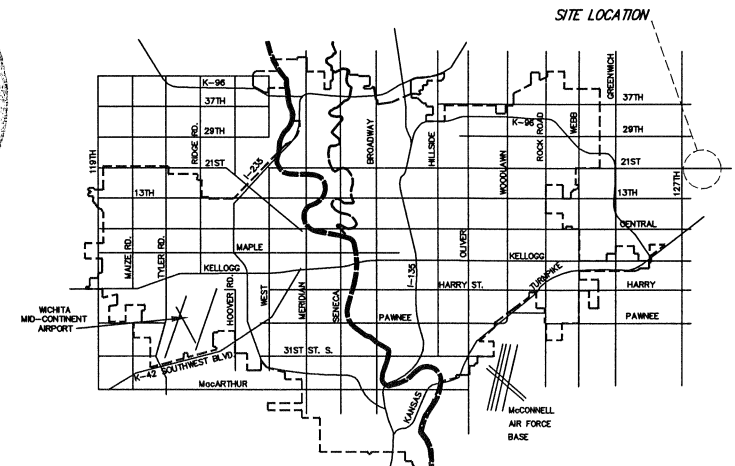
INDEX OF SHEETS

- INDEX SHEET
- SITE GRADING PLAN
- STORM SEWER PLAN & PROFILE
- TYPE I CURB INLET
- SHALLOW TYPE P MANHOLE
- 4'x2' DROP INLET
- EROSION CONTROL PLAN
- SOIL EROSION BMPS
- SOIL EROSION BMPS
- PLAT COPY

BENCHMARKS

RR SPIKE IN SOUTH FACE OF POWER POLE ± 93' WEST OF THE NORTH EAST CORNER LOT 5, BLOCK 1 REED'S COMMERCIAL ADDITION, SOUTH SIDE OF 21ST STREET NORTH.
 ELEVATION = 1359.33 (NGVD 29)

WEST AND SOUTH HDWL. RCB UNDER 21ST 1506'± EAST OF NORTH WEST CORNER OF SEC. 11, T27S R2E
 ELEVATION = 1351.77 (NGVD 29)



CITY OF WICHITA, KANSAS
JAMES L. ARMOUR, P.E., CITY ENGINEER



Ruggles & Bohm, P.A.
 Engineering, Surveying, Land Planning
 924 North Main (316) 264-8008
 Wichita, Kansas 67203 (316) 264-4621 fax
 www.rbkansas.com E-mail: info@rbkansas.com