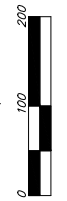
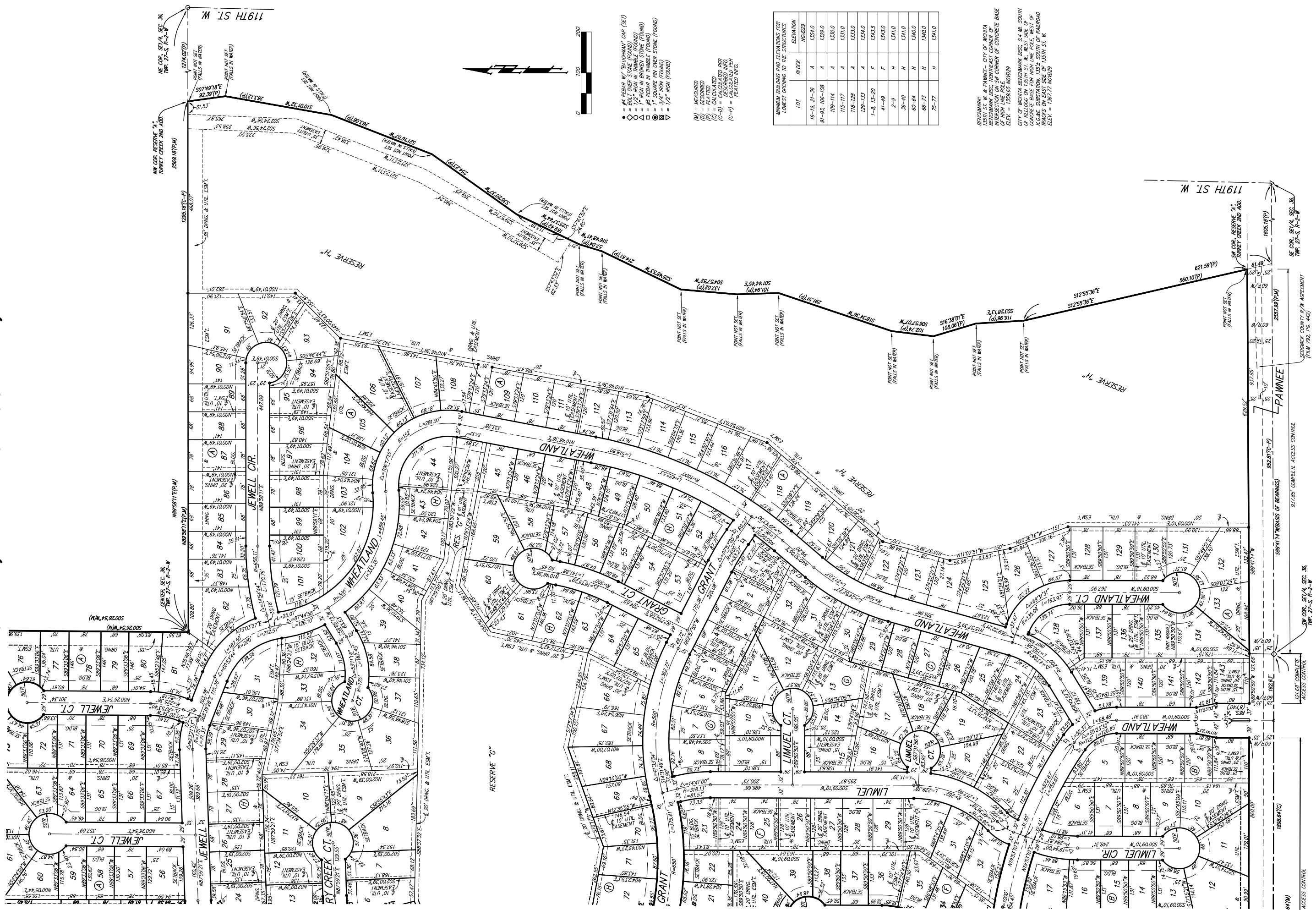


TURKEY CREEK 3RD ADDITION WICHITA, SEDGWICK COUNTY, KANSAS



- 4" REBAR W/ "BALCONY" CAP (SET)
- 6" BOLT OVER STONE (FOUND)
- ◇ 1" IRON IN BROKEN STONE (FOUND)
- △ 1" SQUARE PIN OVER STONE (FOUND)
- ▽ 1/2" IRON (FOUND)

- (M) = MEASURED
- (D) = DESCRIBED
- (P) = PLATTED
- (C) = CALCULATED
- (C-D) = DESCRIBED PER MEASURED INFO
- (C-P) = CALCULATED PER PLATTED INFO

LOT	BLOCK	ELEVATION
16-19, 21-36	A	1294.0
91-93, 106-108	A	1299.0
109-114	A	1300.0
115-117	A	1310.0
118-128	A	1310.0
129-133	A	1314.0
1-8, 13-20	F	1343.5
41-49	F	1343.0
2-9	H	1341.0
36-40	H	1341.0
60-64	H	1340.0
66-73	H	1340.0
75-77	H	1341.0

BENCHMARK:
15TH ST. W. & PAINEE - CITY OF WICHITA
15TH ST. W. & WILSON - WILSON CORNER
INTERSECTION OF CORNER OF CONCRETE BASE
OF HIGH LINE POLE.
ELEV. = 1338.65 NAD83

CITY OF WICHITA BENCHMARK DISC. 0.4 MI. SOUTH
OF KELLOGG ON 15TH ST. W. WEST SIDE OF
CONCRETE BASE FOR HIGH LINE POLE, WEST OF
K.C.R.E. SUBSTATION, 105' SOUTH OF RAILROAD
ELEV. = 1337.77 NAD83

NOTE:
A master grading plan has been developed for this subdivision and is on file with the City of Wichita, Kansas. All drainage easements, right-of-way, or reserves shall remain of established grades in Kansas. No obstructions which impede the flow of this drainage system shall be allowed.