

TURKEY CREEK 3RD ADDITION

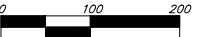
WICHITA, SEDGWICK COUNTY, KANSAS

U.S. HIGHWAY 54

BOARD OF COUNTY COMMISSIONERS
OF SEDGWICK COUNTY, KANSAS
(DOC.#/FLM-PG. 28758025)

BOARD OF COUNTY COMMISSIONERS
OF SEDGWICK COUNTY, KANSAS
(DOC.#/FLM-PG. 28758025)

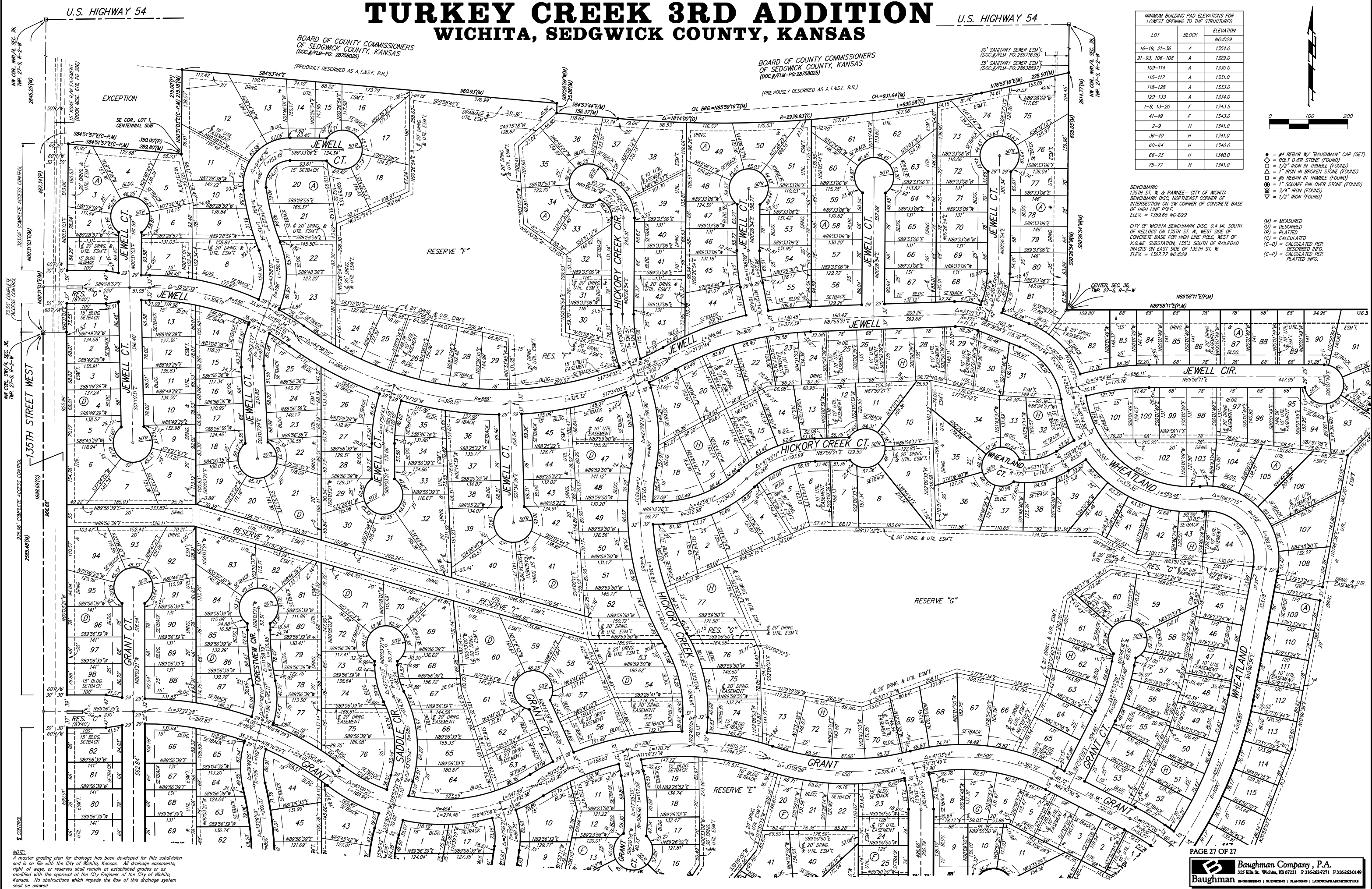
MINIMUM BUILDING PAD ELEVATIONS FOR LOWEST OPENING TO THE STRUCTURES		
LOT	BLOCK	ELEVATION
16-19, 21-36	A	1354.0
91-93, 106-108	A	1329.0
109-114	A	1330.0
115-117	A	1331.0
118-128	A	1333.0
129-133	A	1334.0
1-8, 13-20	F	1343.5
41-49	F	1343.0
2-9	H	1341.0
36-40	H	1341.0
60-64	H	1340.0
66-73	H	1340.0
75-77	H	1341.0



- = #4 REBAR W/ "BAUGHMAN" CAP (SET)
- = BOLT OVER STONE (FOUND)
- = 1/2" IRON W/ THIMBLE (FOUND)
- = 1" IRON IN BROKEN STONE (FOUND)
- = #5 REBAR IN THIMBLE (FOUND)
- = 1" SQUARE PIN OVER STONE (FOUND)
- = 3/4" IRON (FOUND)
- = 1/2" IRON (FOUND)

BENCHMARK:
135TH ST. W. & PAWNEE - CITY OF WICHITA
BENCHMARK DISC. NORTH-EAST CORNER OF
INTERSECTION ON SW CORNER OF CONCRETE BASE
OF HIGH LINE POLE, WEST OF
K.G.A.E. SUBSTATION, 135 1/2 SOUTH OF RAILROAD
TRACKS ON EAST SIDE OF 135TH ST. W.
ELEV. = 1367.77 NGVD29

- (M) = MEASURED
- (D) = DESCRIBED
- (P) = PLATTED
- (C) = CALCULATED
- (C-D) = CALCULATED PER
DESCRIBED INFO.
- (C-P) = CALCULATED PER
PLATTED INFO.



NOTE:
A master grading plan for drainage has been developed for this subdivision
and is on file with the City of Wichita, Kansas. All drainage easements,
right-of-ways, or reserves shall remain at established grades or as
modified with the approval of the City Engineer of the City of Wichita,
Kansas. No obstructions which impede the flow of this drainage system
shall be allowed.