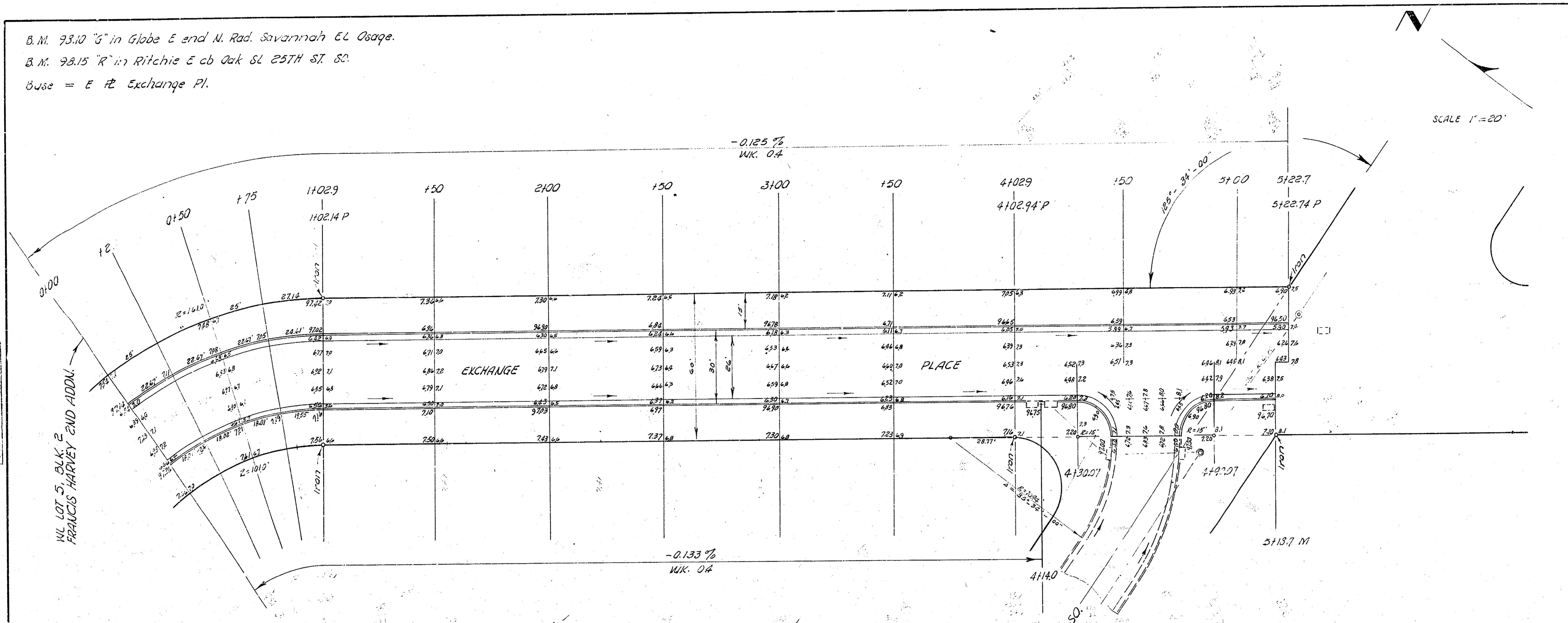


B.M. 93.10 "G" in Globe E end N. Rad. Savannah E.L. Osage.
 B.M. 93.15 "R" in Ritchie E cb Oak St 25TH ST. SO.
 Base = E of Exchange Pl.

SCALE 1"=20'



CURVE DATA		STATIONING ON E. PL.			
R = 161.00'		STATIONING ON E. PL.			
		1/2 Δ = 18°-10'-30"			
Station	Chord length	Chord length	Deflection	Total	Deflections
	on E. PL	of offset from face W. cb			
	R = 161.00'	R = 100.00'			
0+00					
0+25.0	25.0	16.72'	23.89'	2°-26'-55"	
0+50.0	25.0	16.75'	23.89'	4°-26'-54"	8°-53'-49"
0+75.0	25.0	16.76'	23.89'	4°-26'-55"	13°-20'-44"
1+02.14	27.14	12.19'	25.93'	4°-49'-46"	18°-10'-30"

EARTHWORK
 Excavation

City	Prop
88.1	488.5
8.8	8.9
96.9 Cu. Yds.	537.4 Cu. Yds.

EXCHANGE PLACE
 SL 25TH ST. SO. TO WL LOT 5, BLK. 2
 FRANCIS HARVEY 2ND ADDN.
 26°-2'-30" A.C.
 CITY OF WICHITA, KANSAS
 B. E. SMITH CITY ENGINEER
 DEC. 1958, PROJ. NO. C15-90

