

B.M. 3750 N.E. corner concrete porch No. 603 W. 30th St. So.

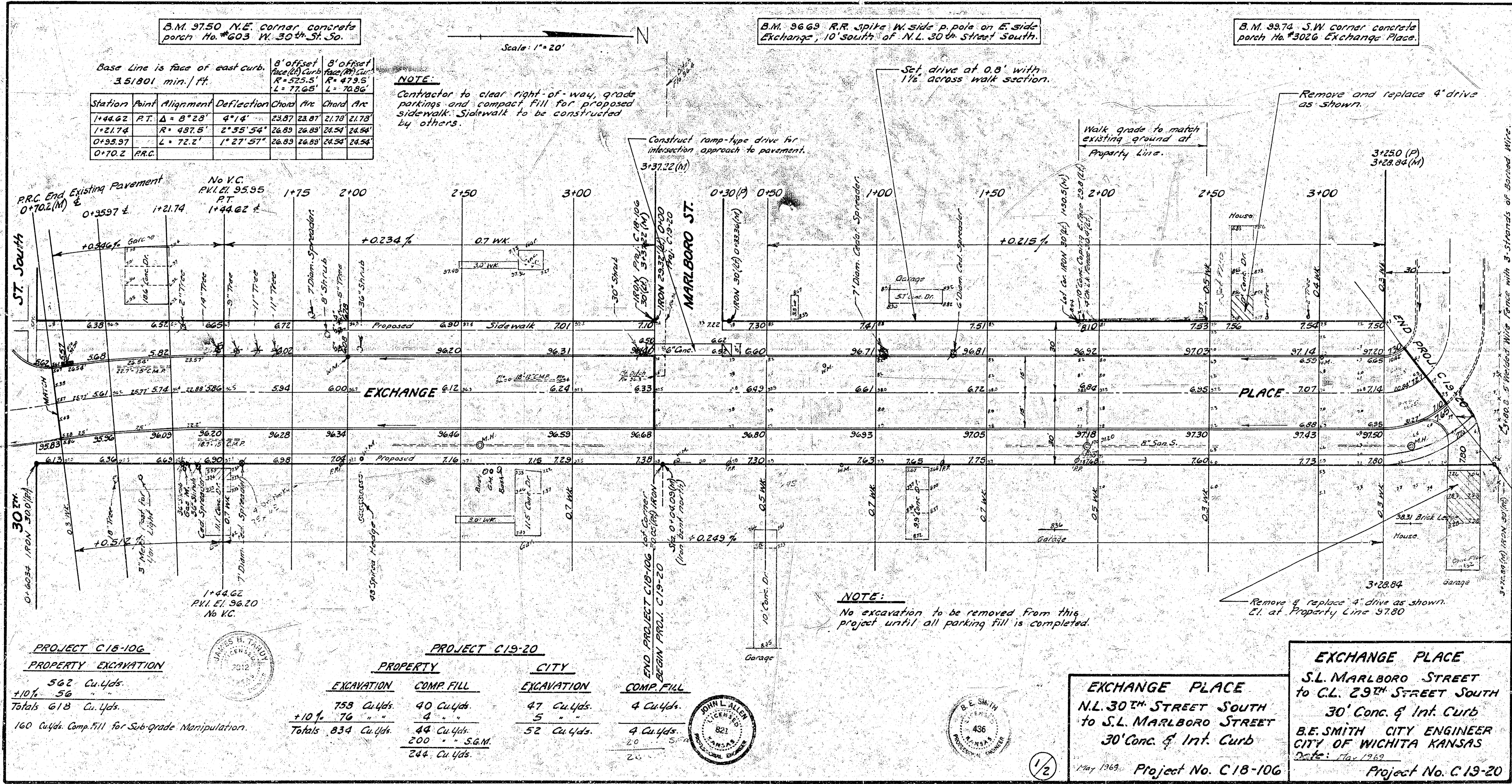
B.M. 3663 R.R. spike W. side p. pole on E. side Exchange, 10' south of N.L. 30th Street South.

B.M. 3974 S.W. corner concrete porch No. 3026 Exchange Place.

Base Line is face of east curb.
351801 min./ft

Station	Point	Alignment	Deflection	Chord	Arc	Chord	Arc
1+44.62	P.T.	$\Delta = 8^{\circ}28'$	$4^{\circ}14'$	23.87	23.87	21.78	21.78
1+21.74	A	$R = 437.8'$	$2^{\circ}53'34''$	26.89	26.89	24.54	24.54
0+95.97	L	$L = 72.2'$	$1^{\circ}27'57''$	26.89	26.89	24.54	24.54
0+70.2	P.R.C.						

NOTE:
Contractor to clear right-of-way, grade parkings and compact fill for proposed sidewalk. Sidewalk to be constructed by others.



PROJECT C18-106
PROPERTY EXCAVATION

562 Cu.Yds.
+10% 56
Totals 618 Cu.Yds.

160 Cu.Yds. Comp. Fill for Sub-grade Manipulation.

PROJECT C19-20

PROPERTY		CITY	
EXCAVATION	COMP. FILL	EXCAVATION	COMP. FILL
753 Cu.Yds.	40 Cu.Yds.	47 Cu.Yds.	4 Cu.Yds.
+10% 76	4	5	
Totals 834 Cu.Yds.	44 Cu.Yds.	52 Cu.Yds.	4 Cu.Yds.
	200' S.G.M.		
	244 Cu.Yds.		

NOTE:
No excavation to be removed from this project until all parking fill is completed.

<p>EXCHANGE PLACE S.L. MARLBORO STREET to C.L. 29th STREET SOUTH 30' Conc. & Int. Curb</p>	<p>EXCHANGE PLACE S.L. MARLBORO STREET to C.L. 29th STREET SOUTH 30' Conc. & Int. Curb</p>
---	---

B.E. SMITH
CITY ENGINEER
CITY OF WICHITA KANSAS
Date: Jan 1969

1 May 1969 Project No. C18-106
Project No. C19-20



1/2