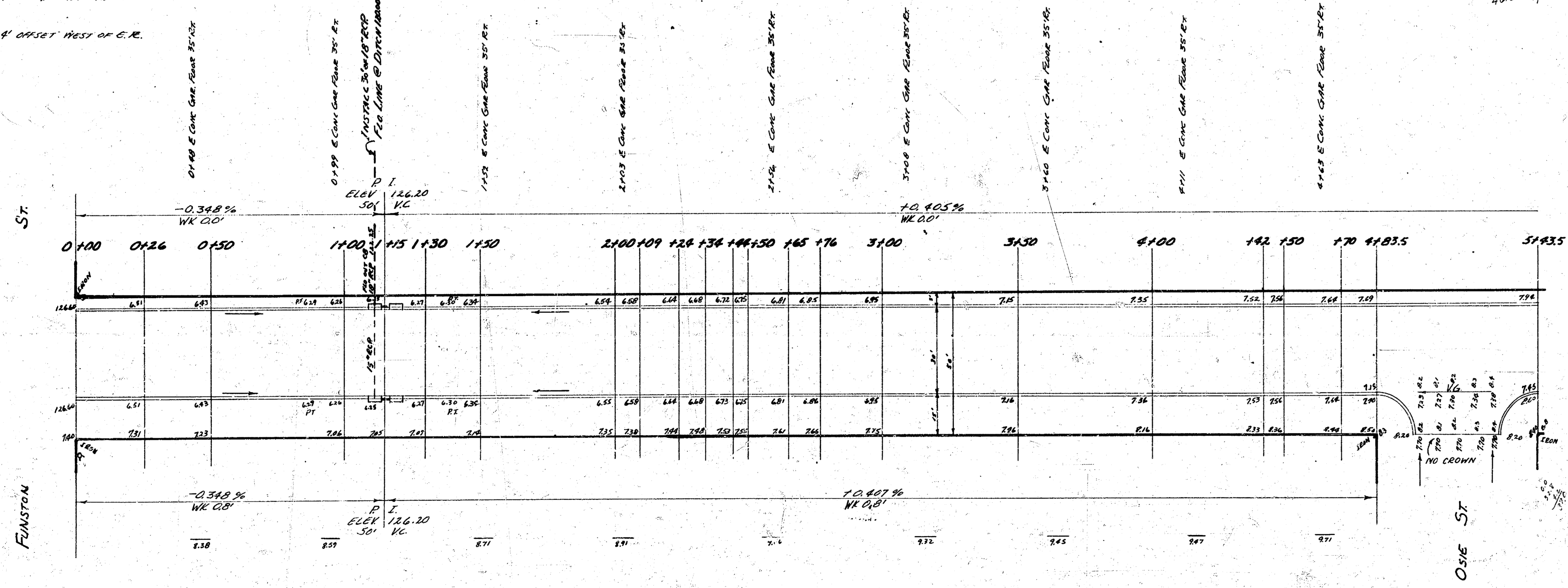


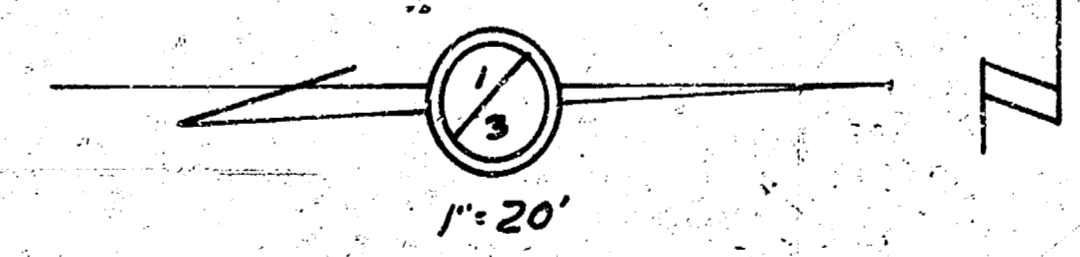
B.M. 131.36 SE. Cor. Conc. Patch No. 1763 S. LEWISTON
 B.M. 12.894 N.W. Cor. Conc. Patch No. 1808 FABRIQUE
 B.M. 133.89 S.W. Cor. Conc. HURQUARD E. COR. ACROSS HARRY ST.
 B.M. 130.93 "T" IN MUELLER FILE PLUG NE COR. OSIE & EAST FABRIQUE

STA ON 4' OFFSET WEST OF C.R.

CITY PROP
 46.6 cu yd
 1702.1
 +1075.1
 1177.0 cu yd



DRAWN BY: E.V. STY
 CHECKED: L.C. ABE



E. FABRIQUE DRIVE
 N.L. FUNSTON TO S.L. HARRY
 30' CONC. & C.B.

CITY OF WICHITA, KANSAS
 B.E. SMITH CITY ENGINEER
 JAN. 20, 1953 PROJ. No. C12-203

CURVE DATA CALCULATED FROM PRELIMINARY SURVEY
 & OFFSET FROM ELEV. = 218.8 HORIZ. DIST. = 22.30' ELEV. DIFF. = 0.00'

STATION	ARC LENGTH	CHORD	CHORD BEARING	CHORD ANGLE	TOTAL CHORD
7+00	32.85'	30.12'	35.54'	3° 47' 50"	8° 47' 50"
7+50	65.70'	61.59'	71.05'	5° 05' 50"	17° 05' 50"
8+00	98.55'	92.48'	106.51'	5° 23' 20"	25° 23' 20"
8+50	131.40'	125.37'	141.01'	5° 41' 20"	34° 04' 40"
9+00	164.25'	156.24'	176.01'	6° 00' 00"	42° 45' 00"
9+50	197.10'	187.07'	201.01'	6° 18' 40"	51° 33' 40"
10+00	230.00'	217.92'	226.01'	6° 37' 20"	60° 21' 20"

