

B.M. 196.73 S.E. Corner of Monument
S.W. Corner Farmstead St & Squire Lane

Note: Contractor to grade parkings, clear right-of-way and compact fill for proposed sidewalk. Sidewalk to be constructed by others.

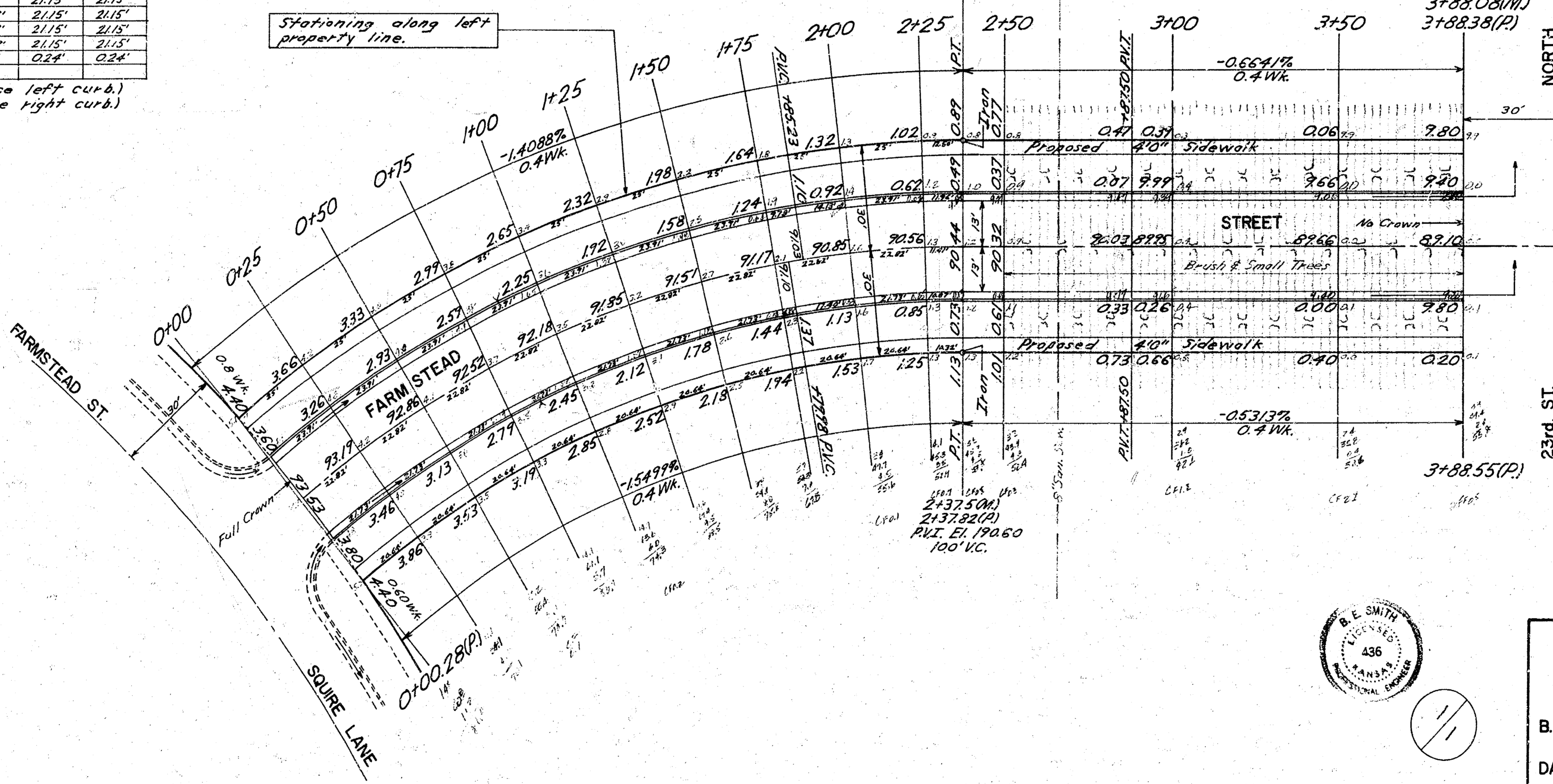
Station	Deflection	Arc	Chord	Arc	Chord
243750 P.T.	17°45'55"	12.25'	12.25'	10.58'	10.58'
2+125	18°43'30"	24.49'	24.49'	21.15'	21.15'
2+100	18°39'40"	24.49'	24.49'	21.15'	21.15'
1+852.3	15°24'55"	10.02'	10.02'	8.66'	8.66'
1+779.8	14°54'42"	4.88'	4.88'	4.21'	4.21'
1+75	14°33'50"	24.49'	24.49'	21.15'	21.15'
1+50	12°27'00"	24.49'	24.49'	21.15'	21.15'
1+25	10°28'10"	24.49'	24.49'	21.15'	21.15'
1+00	8°17'20"	24.49'	24.49'	21.15'	21.15'
0+75	6°04'30"	24.49'	24.49'	21.15'	21.15'
0+50	4°54'40"	24.49'	24.49'	21.15'	21.15'
0+25	2°49'50"	24.49'	24.49'	21.15'	21.15'
0+00.28	0°42'24"	0.27'	0.27'	0.24'	0.24'
0+00					

Baseline Curve Data (Left Prop. Line)
P.I. = Sta. 1+23.71
Δ = 39°31'50"
R = 344.27'
D = 16°38'40"
T = 123.71'
L = 237.50'

Scale 1"=20'
N

5.0770 Min./Ft. of Arc (8' offset face left curb.)
5.9018 Min./Ft. of Arc (8' offset face right curb.)

B.E. SMITH
 CIVIL ENGINEER
 436
 1967



Property
Exc. Comp. Fill
85.4 Cu. Yds. 8.2 Cu. Yds.
35 Cu. Yds. 0.9 Cu. Yds.
93.9 Cu. Yds. 10.1 Cu. Yds.



FARMSTEAD STREET
N. L. SQUIRE LANE TO
S. L. TWENTY THIRD ST. NO.
26-2-30 ASPH. CONC.
B. E. SMITH CITY ENGINEER
CITY OF WICHITA, KANSAS
DATE: JULY 1967
PROJ. NO. C 19-232