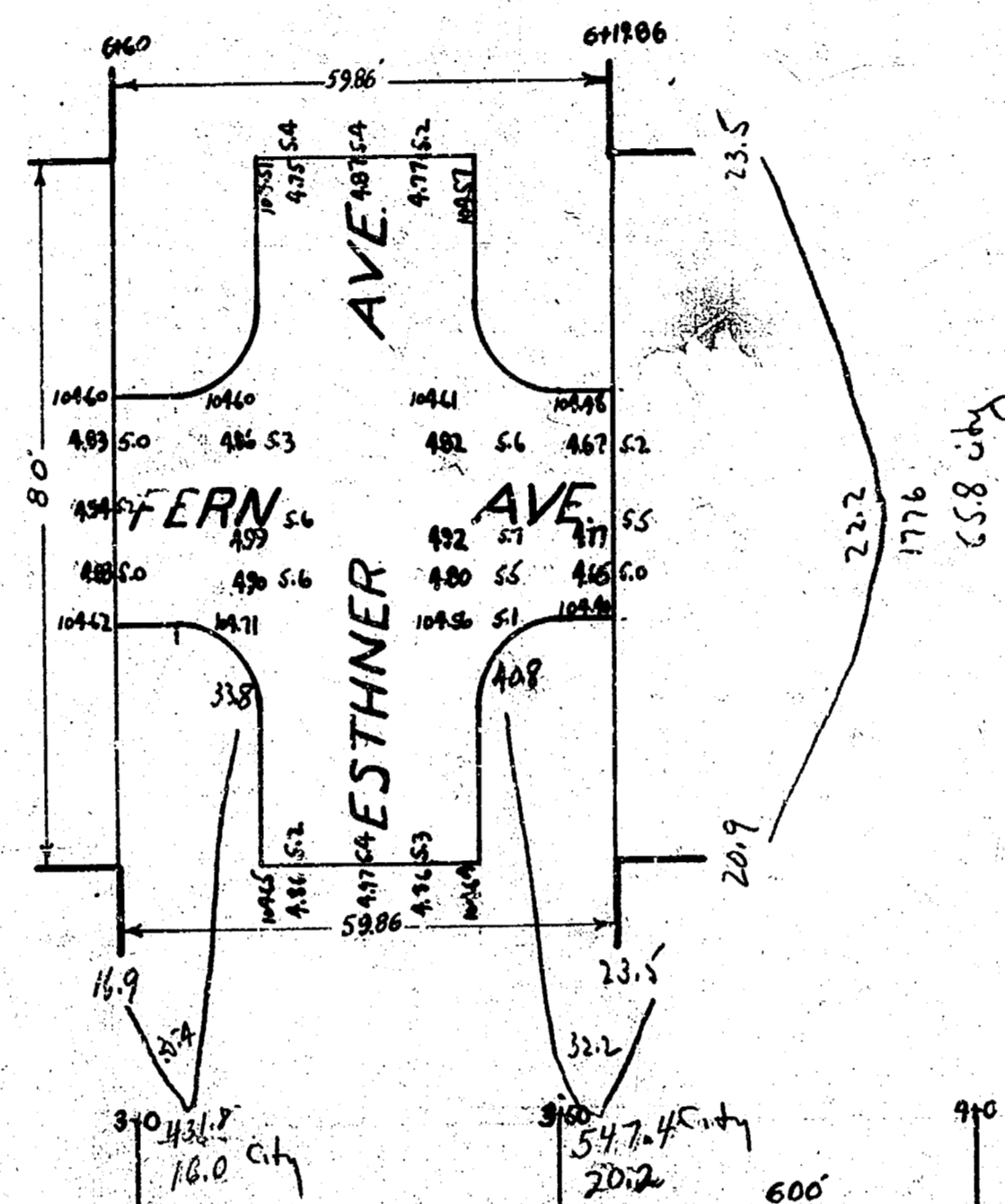


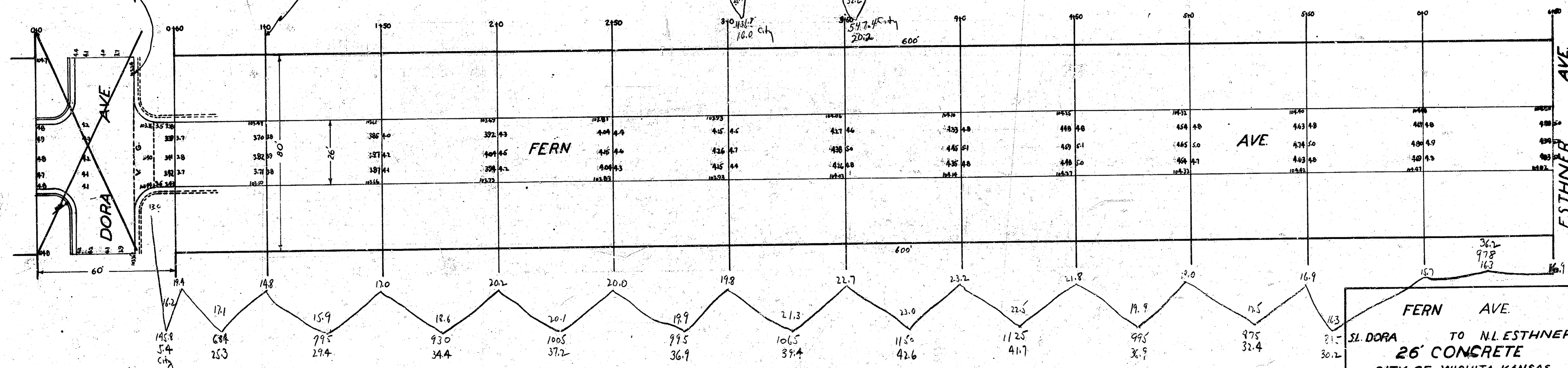
B.M. 10530 W.Cb. Fern N.L. Dora  
 B.M. 10510 W.Cb. Fern S.L. Esthner

| Page  | C.F.  |
|-------|-------|
| 253   | 5.4   |
| 34.4  | 16.0  |
| 37.2  | 20.2  |
| 36.9  | 65.8  |
| 35.4  | 107.7 |
| 42.6  | 10.7  |
| 41.7  | 118.1 |
| 36.9  |       |
| 32.4  |       |
| 30.2  |       |
| 36.2  |       |
| 422.6 |       |
| 42.3  |       |
| 464.9 |       |



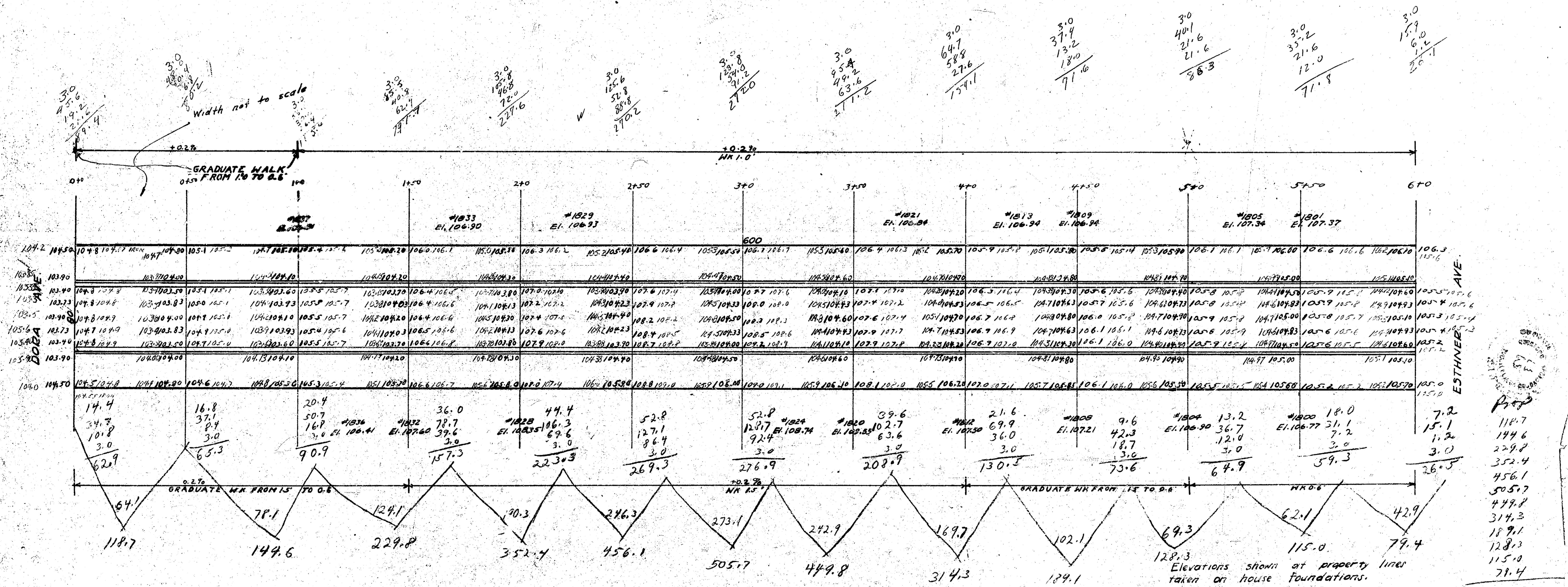
End Pav'ts at Valley Gutter. Remainder  
 of Taper B outside of City Limits.

End of Flattened Crown



FERN AVE.  
 SL. DORA TO N.L. ESTHNER  
 26' CONCRETE  
 CITY OF WICHITA, KANSAS  
 L.K. WHITE CITY ENGINEER  
 JULY 1946

1941  
 FERN - S.L. ESTHNER TO N.L. DORA  
 COMB. CURB & GUTTER



BM-10663 AIR VENT IN FOUNDATION 1/4 MI. SO. OF ESTHNER N.S. FERN  
 B.M.-10520 MARIN M.H. N.S. SCHOOL 100' SW COR. OF SCHOOL

3083.2  
 +100 308.3  
 Total 3391.5

