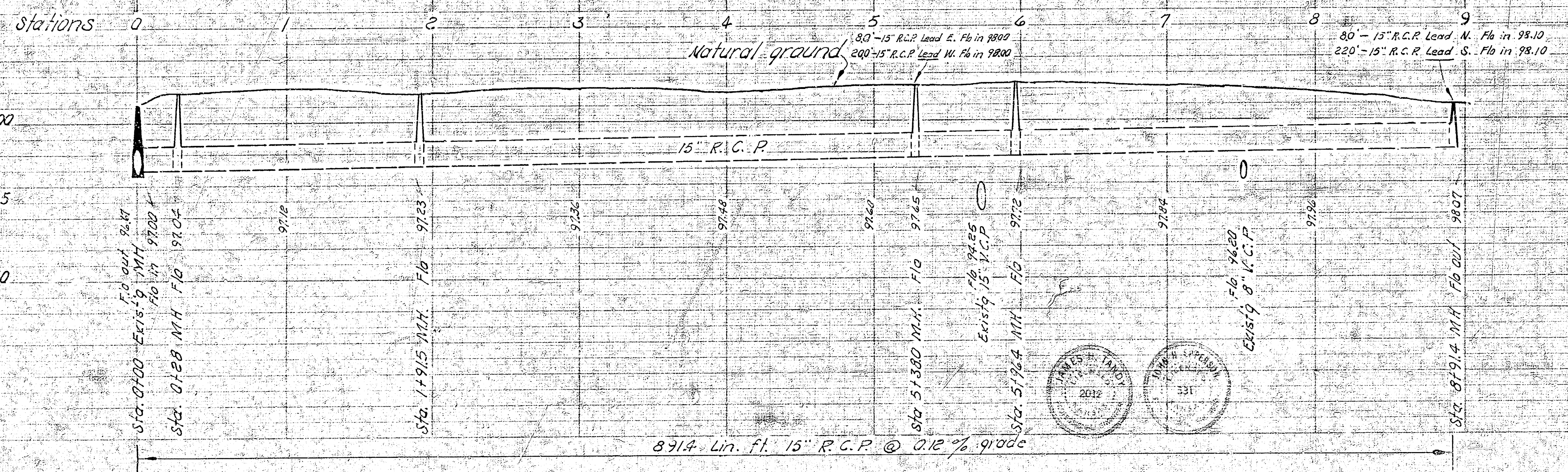


SCALE 1" = 40'

**NOTE:**  
 Sand fill is to be used where excavated material is unsuitable for back fill.  
 Bid price of sand fill is to include cost of flushing ditch where sand fill is used.  
 Lin. ft. of flushing will be paid where excavated material is used & flushed.

B. M. 104.49 SW cor. Pa. Ho. 1443 S. Handley, NE cor. Figg & Handley.

Survey S. E. C. 18  
 Plan  
 11.11.1958  
 Checked



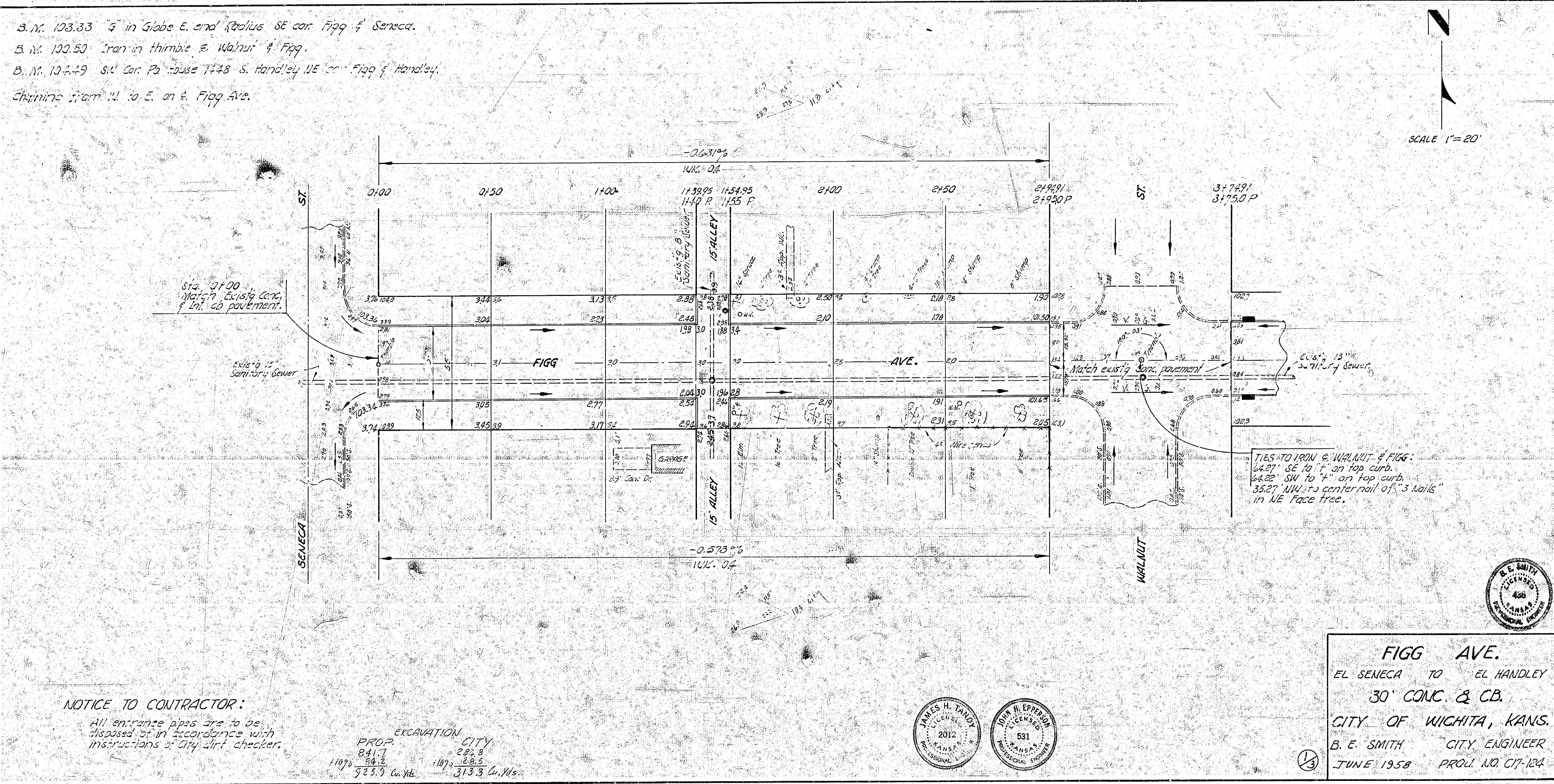
**INCIDENTAL DRAINAGE**  
**FIGG AVE.**  
 SENECA TO HANDLEY  
 CITY OF WICHITA, KANS.  
 B. E. SMITH CITY ENGINEER  
 JUNE 1958 PROJ. NO. C17-124



B.M. 103.33 4 in Globe E. end Radius SE cor Figg & Seneca.  
 B.M. 100.50 Iron in thimble E. Walnut & Figg.  
 B.M. 104.49 Sit' Cor. Pa. house 148 S. Handley NE cor Figg & Handley.  
 Shining from W. to E. on E. Figg Ave.

SCALE 1"=20'

Survey U.A.E. B. M. 103.33  
 Plan C.W. J.W.  
 Exc. C.W. J.W.  
 Checked: ST



**NOTICE TO CONTRACTOR:**  
 All entrance pipes are to be  
 disposed of in accordance with  
 instructions of City dirt checker.

| PROP.          | EXCAVATION | CITY           |
|----------------|------------|----------------|
| 841.7          | 282.8      |                |
| 1107.5         | 344.2      | 1107.5         |
| 723.5 Cu. Yds. |            | 313.3 Cu. Yds. |



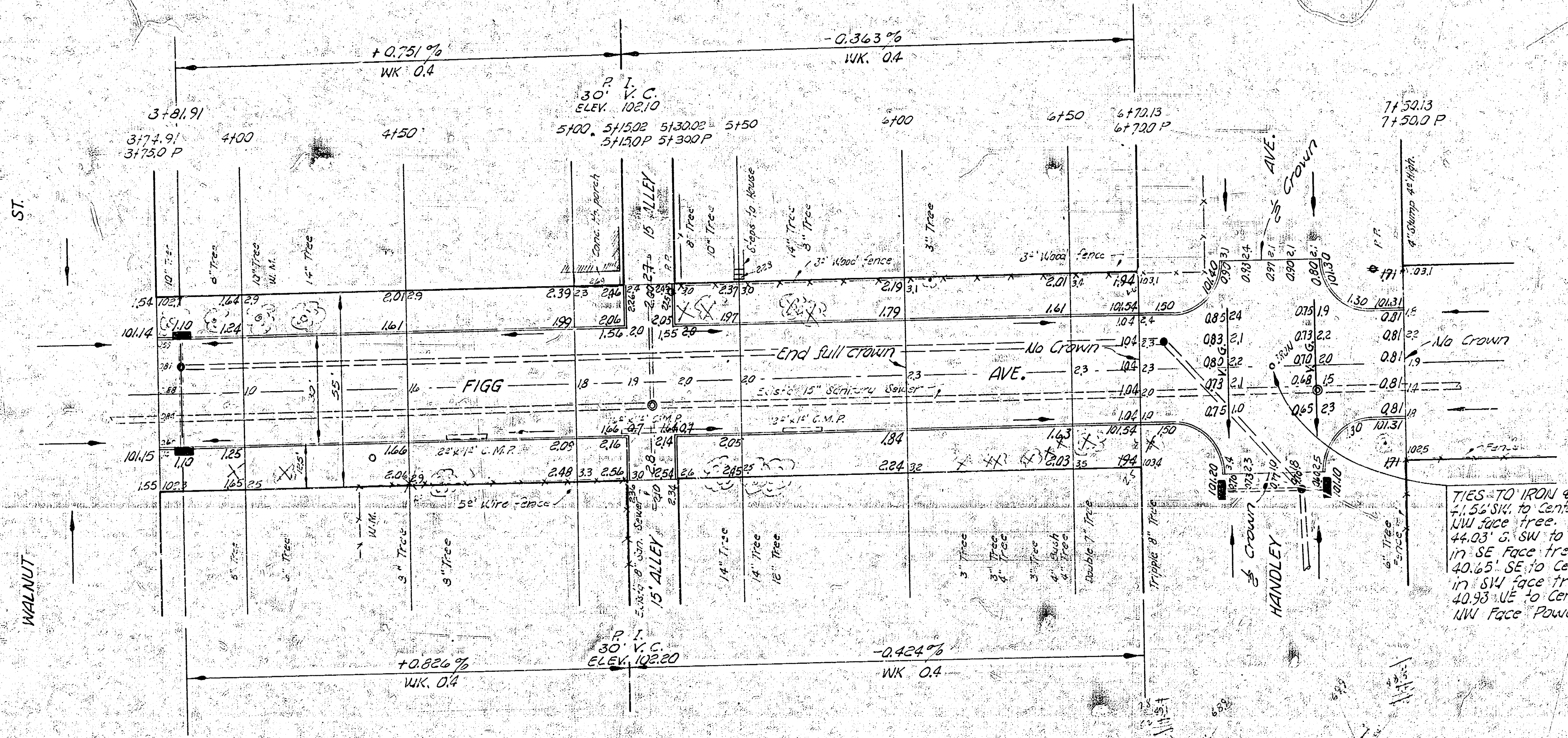
**FIGG AVE.**  
 EL SENECA TO EL HANDLEY  
 30" CONC. & CB.  
 CITY OF WICHITA, KANS.  
 B. E. SMITH CITY ENGINEER  
 JUNE 1958 PROJ. NO. C17-124

TIES TO IRON @ WALNUT & FIGG:  
 64.27' SE 10' on top curb.  
 64.22' SW 10' on top curb.  
 35.27' NW to center rail of "3' waifs"  
 in NE face tree.



Base line = E. Figg Ave.  
 S.W. 132.49 Sit car Pa. House 1445 S. Handley, N.E. cor. Figg & Handley

SCALE 1"=20'



TIES TO IRON & FIGG & HANDLEY  
 11.55' NW to Center Nail of "3 Nails" in  
 NW face tree.  
 44.03' S. SW to Center Nail of "3 Nails"  
 in SE face tree.  
 40.65' SE to Center Nail of "3 Nails"  
 in SW face tree.  
 40.93' NE to Center Nail of "3 Nails"  
 NW Face Power Pole.

FIGG AVE.

PROJ. NO. C17-124