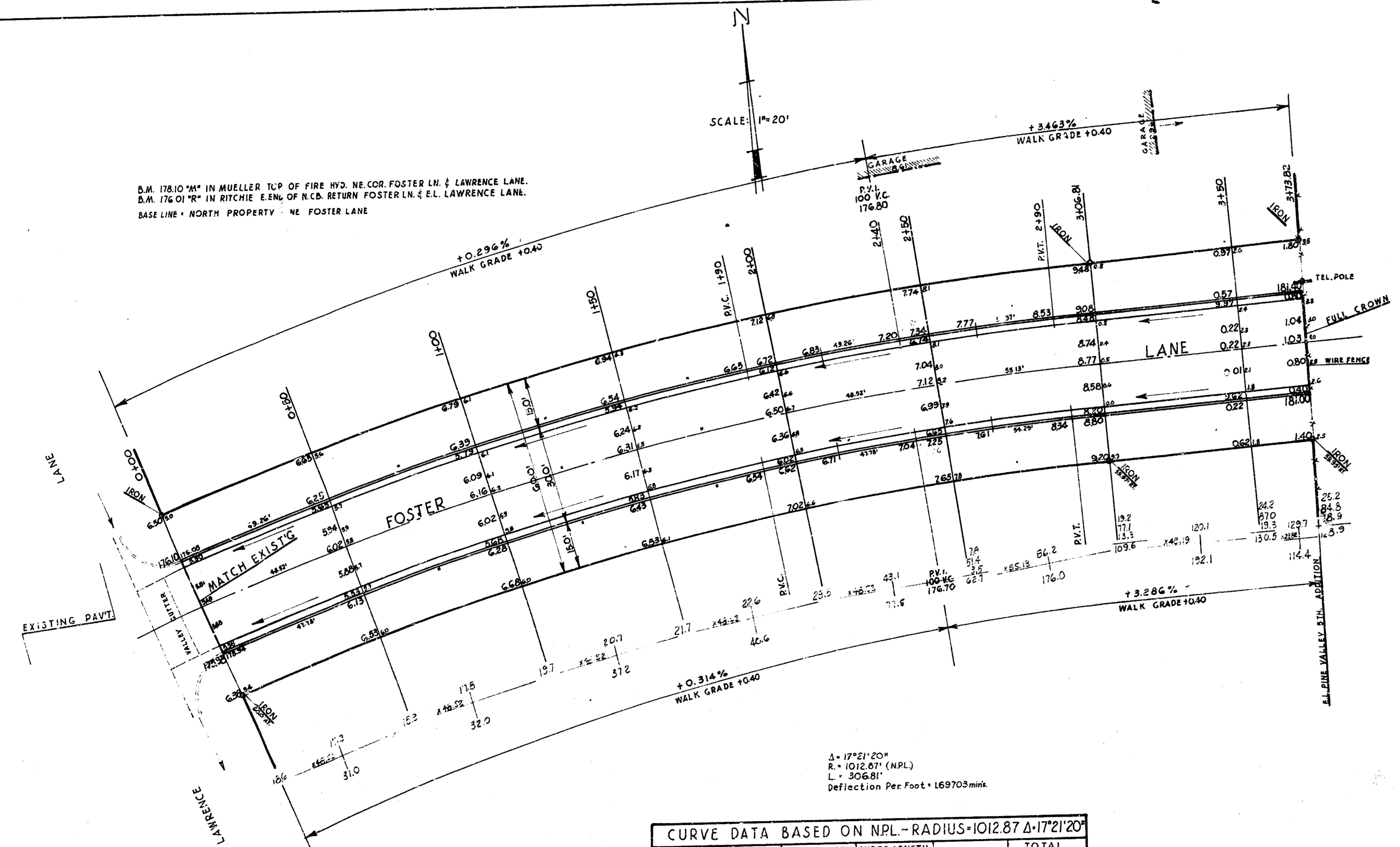


1. B. HUGHES JR. C-19  
 2. SEAL  
 3. SEAL  
 4. SEAL  
 5. SEAL  
 6. SEAL  
 7. SEAL  
 8. SEAL  
 9. SEAL  
 10. SEAL  
 11. SEAL  
 12. SEAL  
 13. SEAL  
 14. SEAL  
 15. SEAL  
 16. SEAL  
 17. SEAL  
 18. SEAL  
 19. SEAL  
 20. SEAL  
 21. SEAL  
 22. SEAL  
 23. SEAL  
 24. SEAL  
 25. SEAL  
 26. SEAL  
 27. SEAL  
 28. SEAL  
 29. SEAL  
 30. SEAL  
 31. SEAL  
 32. SEAL  
 33. SEAL  
 34. SEAL  
 35. SEAL  
 36. SEAL  
 37. SEAL  
 38. SEAL  
 39. SEAL  
 40. SEAL  
 41. SEAL  
 42. SEAL  
 43. SEAL  
 44. SEAL  
 45. SEAL  
 46. SEAL  
 47. SEAL  
 48. SEAL  
 49. SEAL  
 50. SEAL  
 51. SEAL  
 52. SEAL  
 53. SEAL  
 54. SEAL  
 55. SEAL  
 56. SEAL  
 57. SEAL  
 58. SEAL  
 59. SEAL  
 60. SEAL  
 61. SEAL  
 62. SEAL  
 63. SEAL  
 64. SEAL  
 65. SEAL  
 66. SEAL  
 67. SEAL  
 68. SEAL  
 69. SEAL  
 70. SEAL  
 71. SEAL  
 72. SEAL  
 73. SEAL  
 74. SEAL  
 75. SEAL  
 76. SEAL  
 77. SEAL  
 78. SEAL  
 79. SEAL  
 80. SEAL  
 81. SEAL  
 82. SEAL  
 83. SEAL  
 84. SEAL  
 85. SEAL  
 86. SEAL  
 87. SEAL  
 88. SEAL  
 89. SEAL  
 90. SEAL  
 91. SEAL  
 92. SEAL  
 93. SEAL  
 94. SEAL  
 95. SEAL  
 96. SEAL  
 97. SEAL  
 98. SEAL  
 99. SEAL  
 100. SEAL

D.M. 178.10" IN MUELLER T.C.P. OF FIRE HYD. NE. COR. FOSTER LN. & LAWRENCE LANE.  
 D.M. 176.01" IN RITCHIE E.E.N.G. OF N.C.B. RETURN FOSTER LN. & EL. LAWRENCE LANE.  
 BASE LINE = NORTH PROPERTY NE FOSTER LANE



$\Delta = 172'21.20"$   
 $R = 1012.87' (NPL)$   
 $L = 306.81'$   
 Deflection Per Foot = 169703mm

CURVE DATA BASED ON NPL - RADIUS = 1012.87 Δ = 172'21.20"

STATION	ARC LENGTH	CHORD LENGTH SOUTH CURB	CHORD LENGTH NORTH CURB	DEFLECTION	TOTAL DEFLECTION
0+00	-	-	-	0° 00' 00"	0° 00' 00"
+50	50.0'	49.65'	47.37'	1° 24' 51"	1° 24' 51"
+100	-	-	-	-	2° 49' 42"
+150	-	-	-	-	4° 14' 33"
+200	-	-	-	-	5° 39' 24"
+250	-	-	-	-	7° 04' 18"
3106.81	56.81'	56.41'	53.83'	1° 36' 25"	8° 40' 40"

-EARTHWORK TOTALS-  
 EXCAVATION CITY  
 PROPERTY 700.8 0  
 10% 70.1  
 770.9 CU.YDS.

-FOSTER LANE-  
 EL. LAWRENCE LANE TO EL. PINE VALLEY 5TH ADDN.  
 26'-2'-30" ASPHALTIC CONC.  
 CITY OF WICHITA, KANSAS  
 B.E. SMITH CITY ENGINEER  
 DATE: APRIL 1960, PROJ. NO. C19-139

