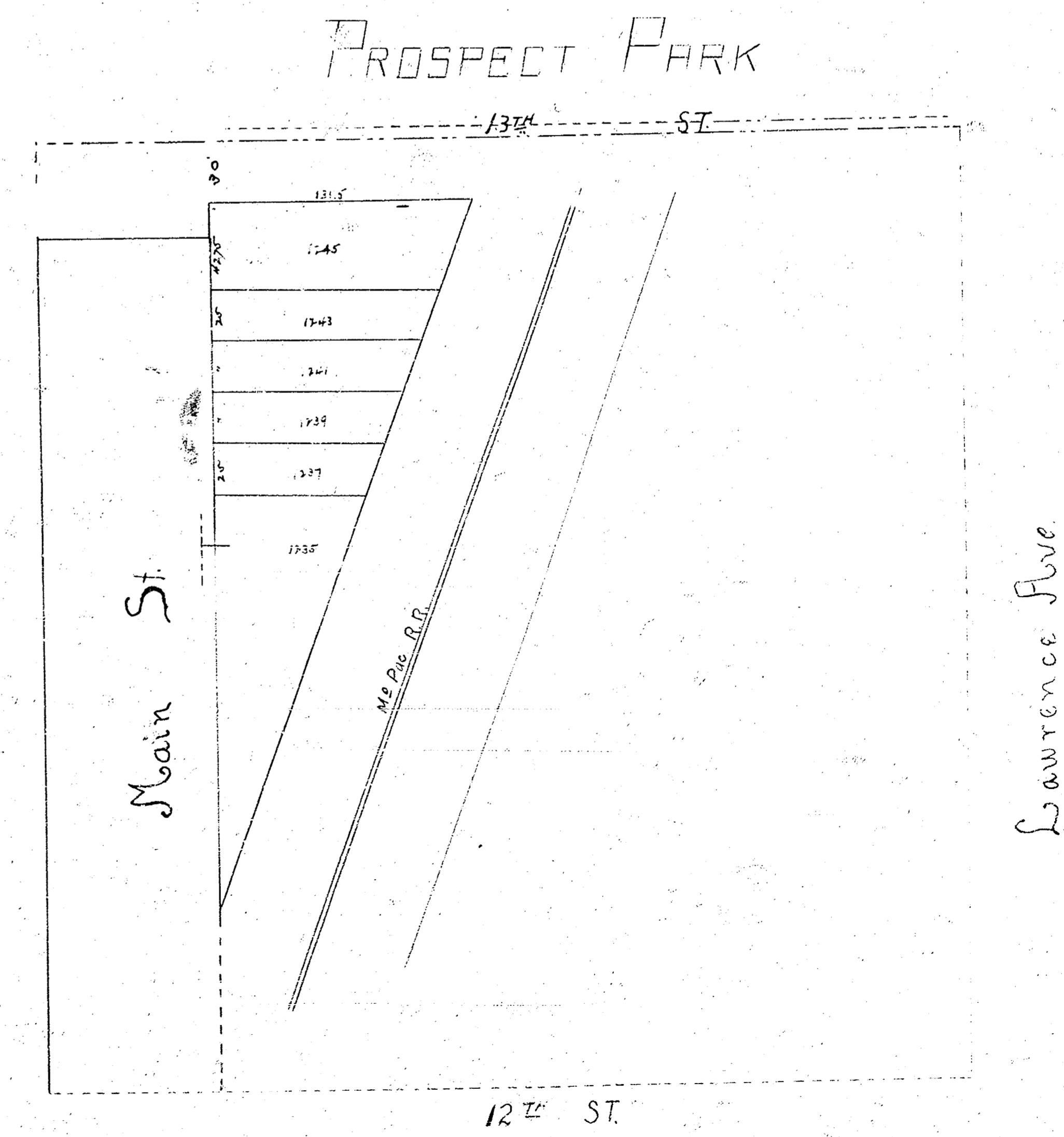
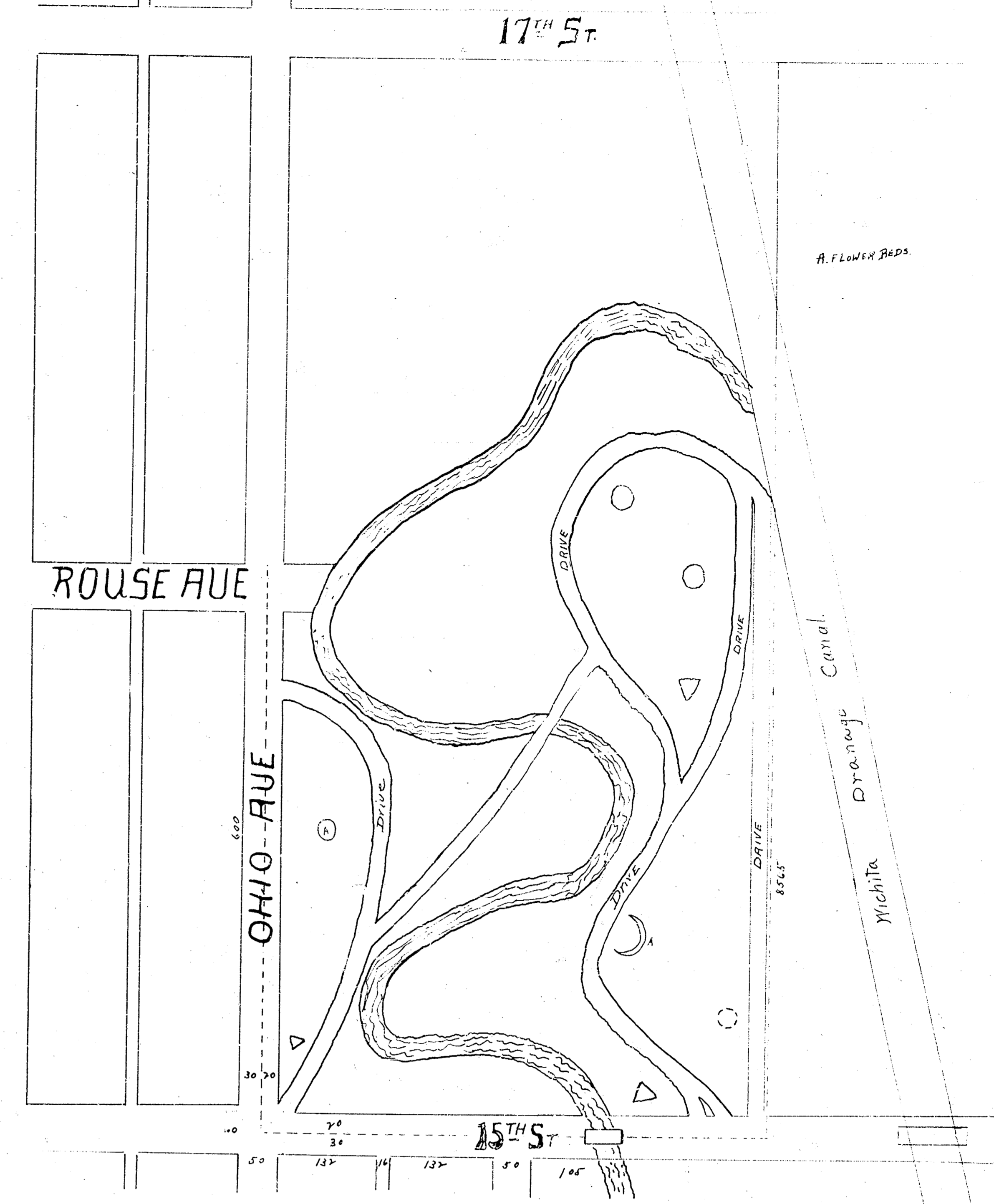
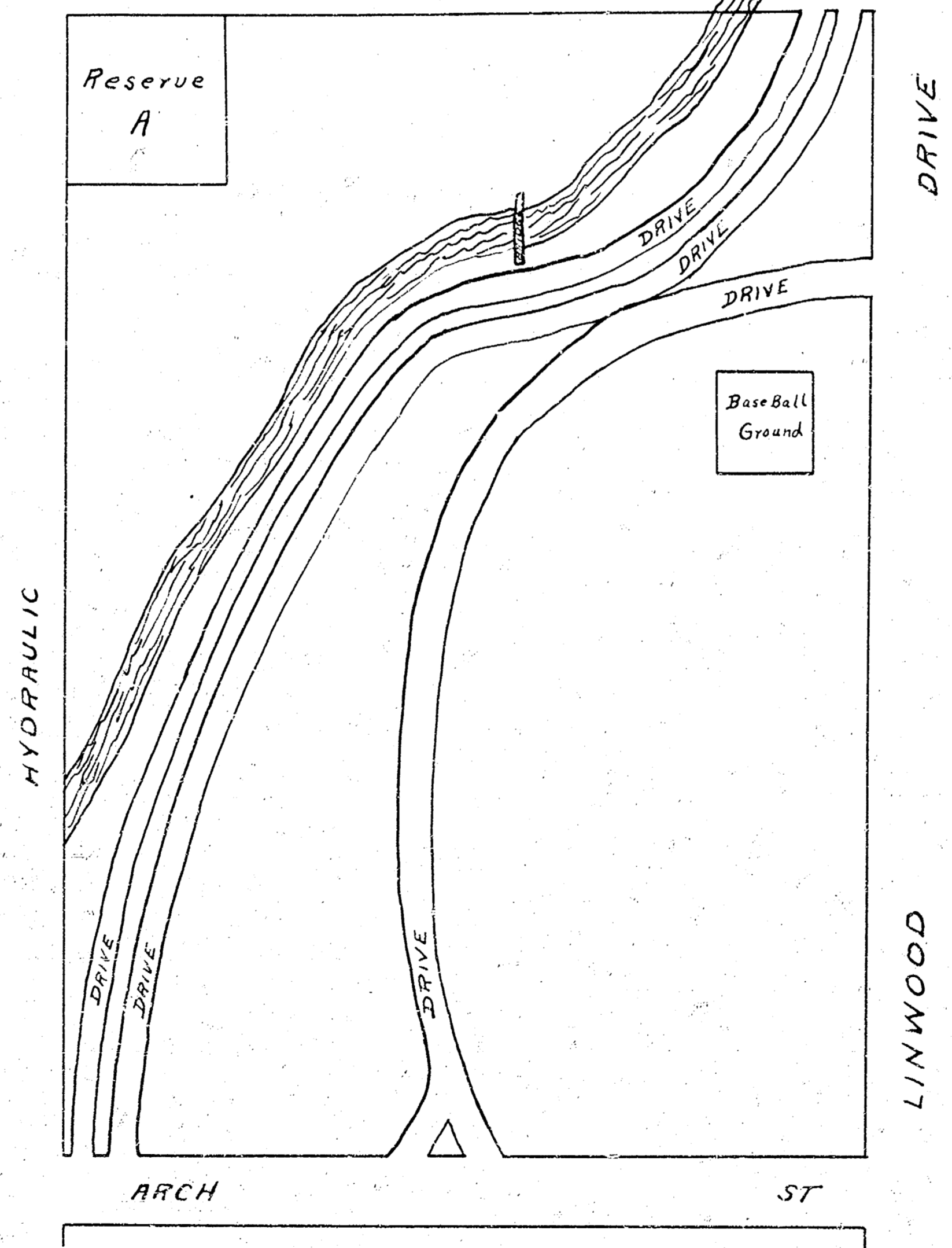
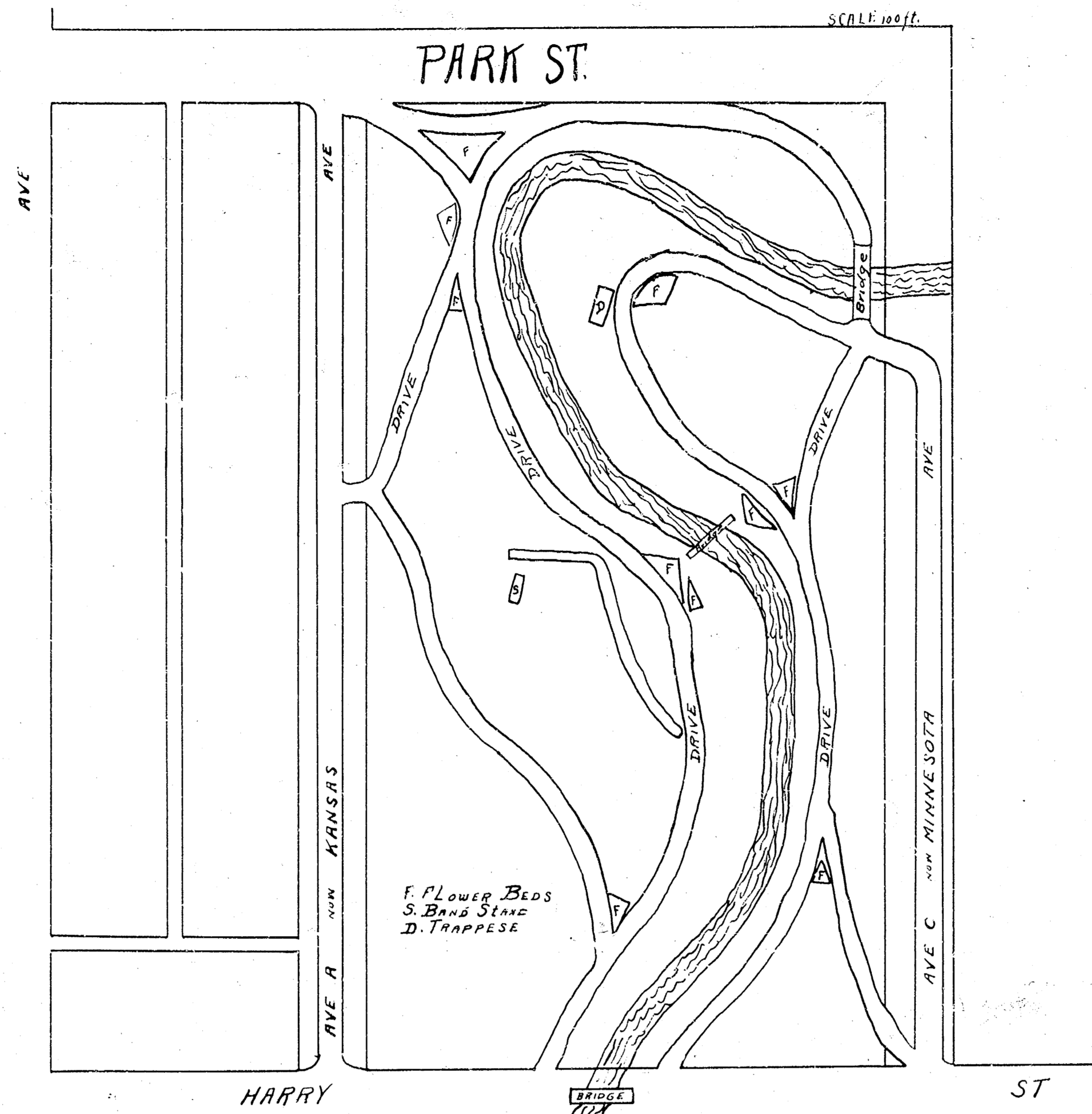
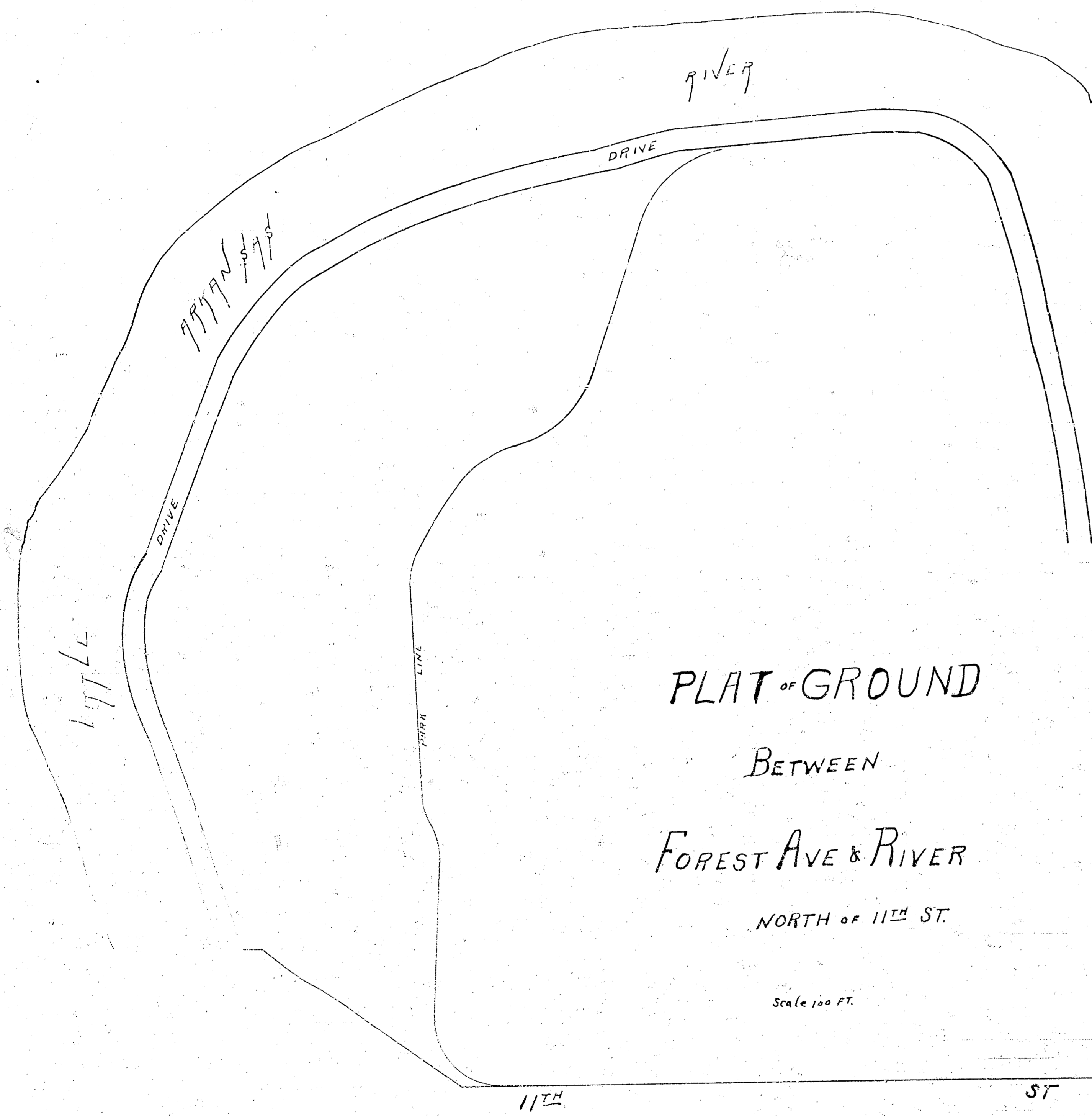
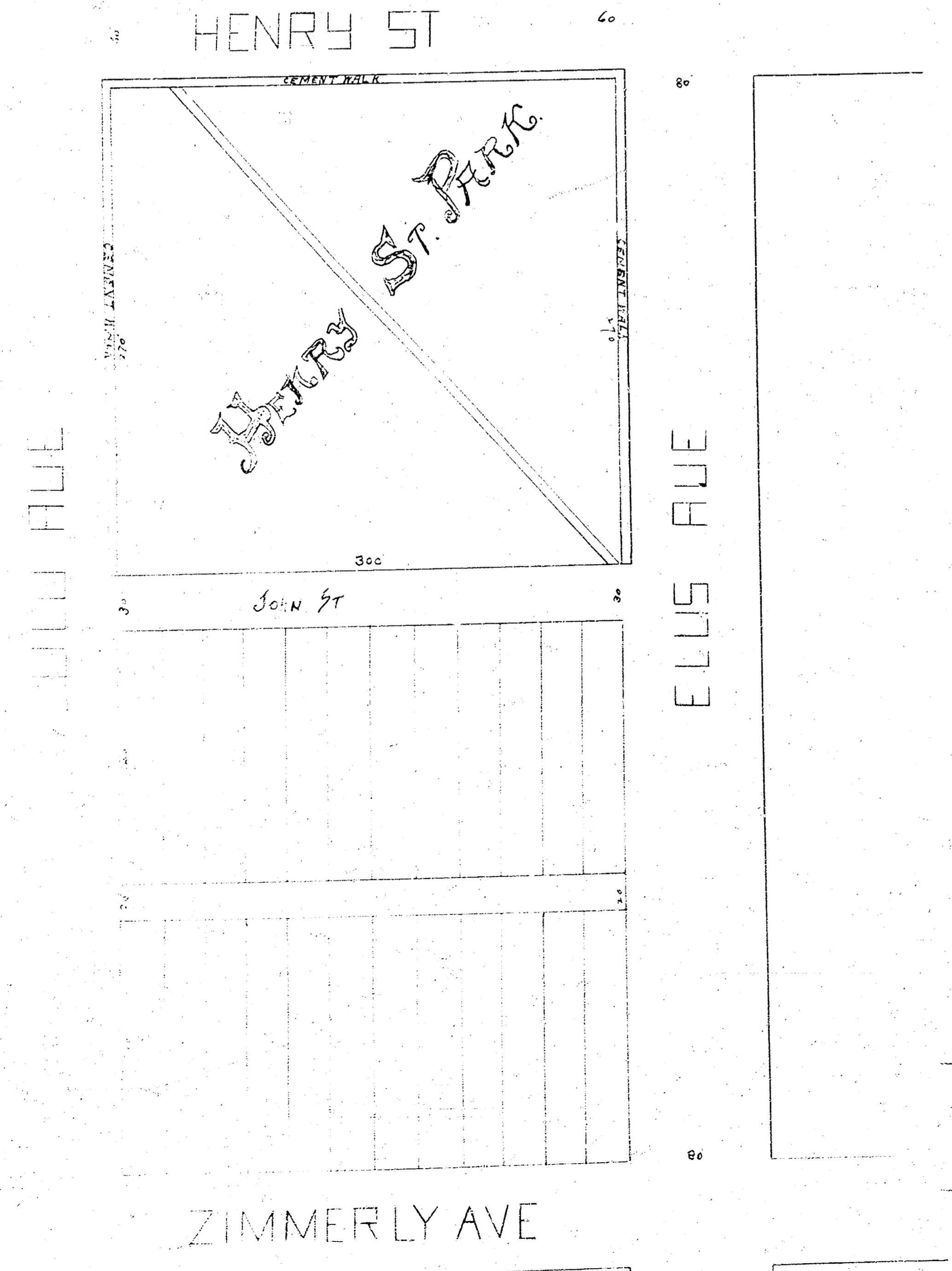
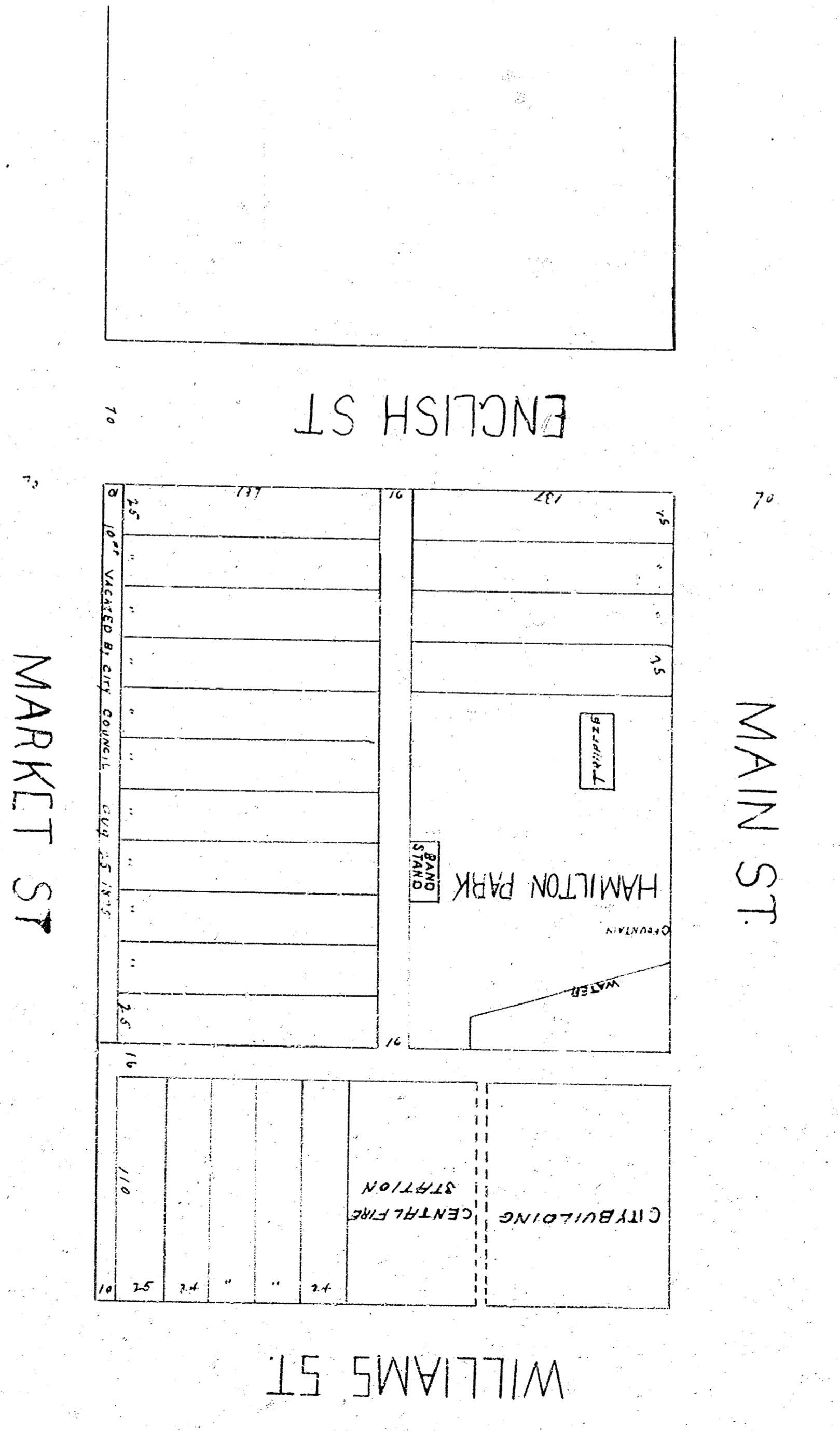
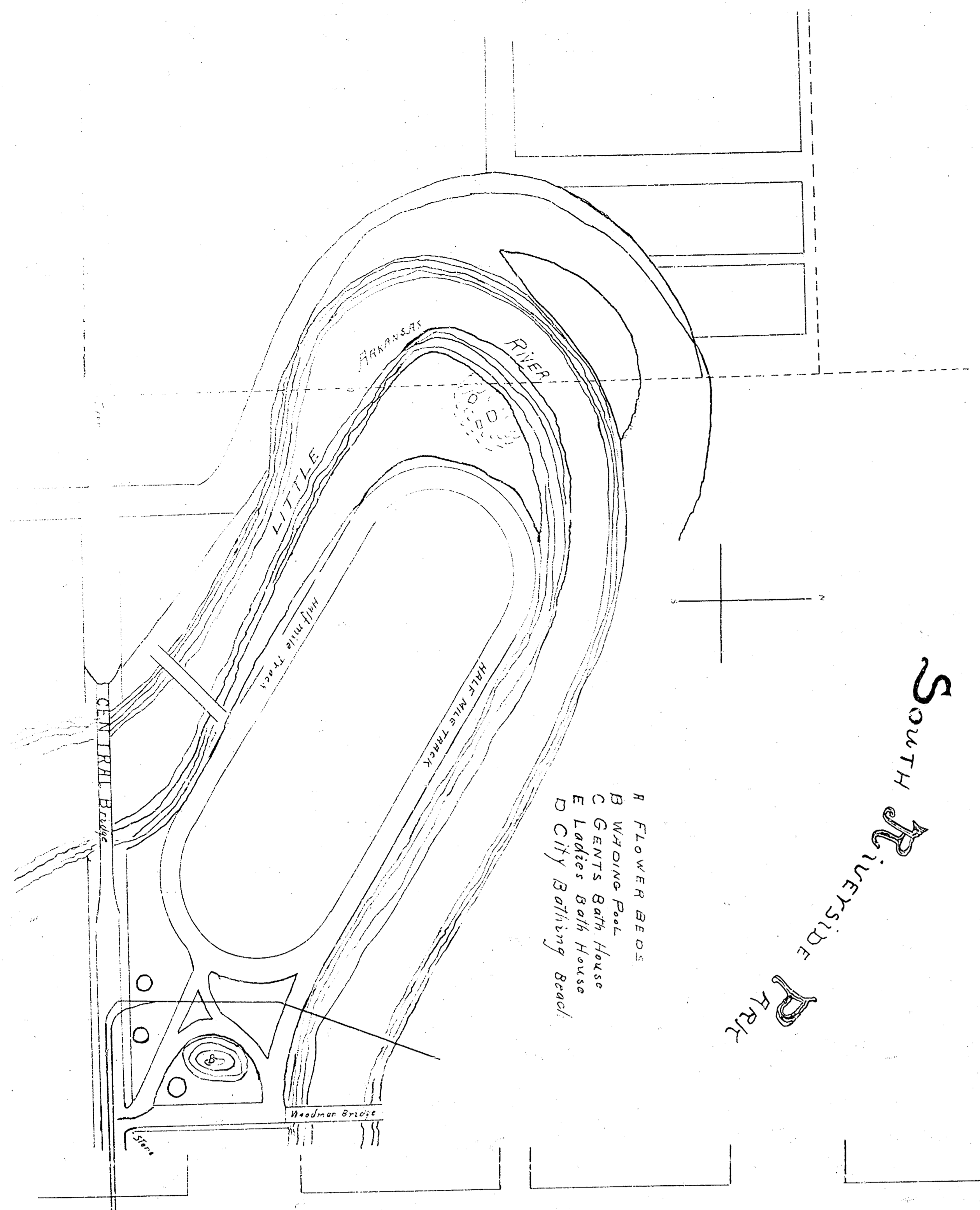
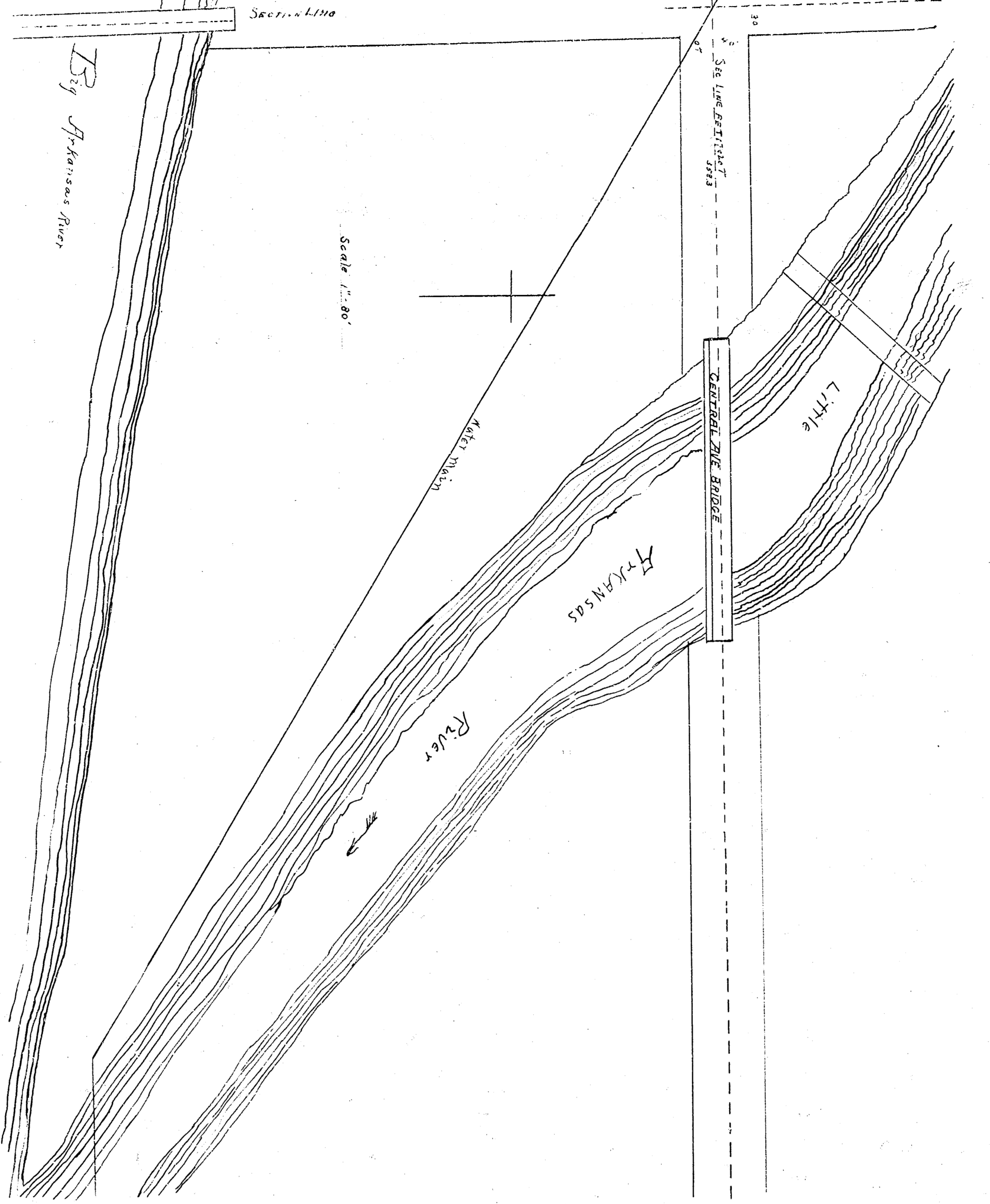
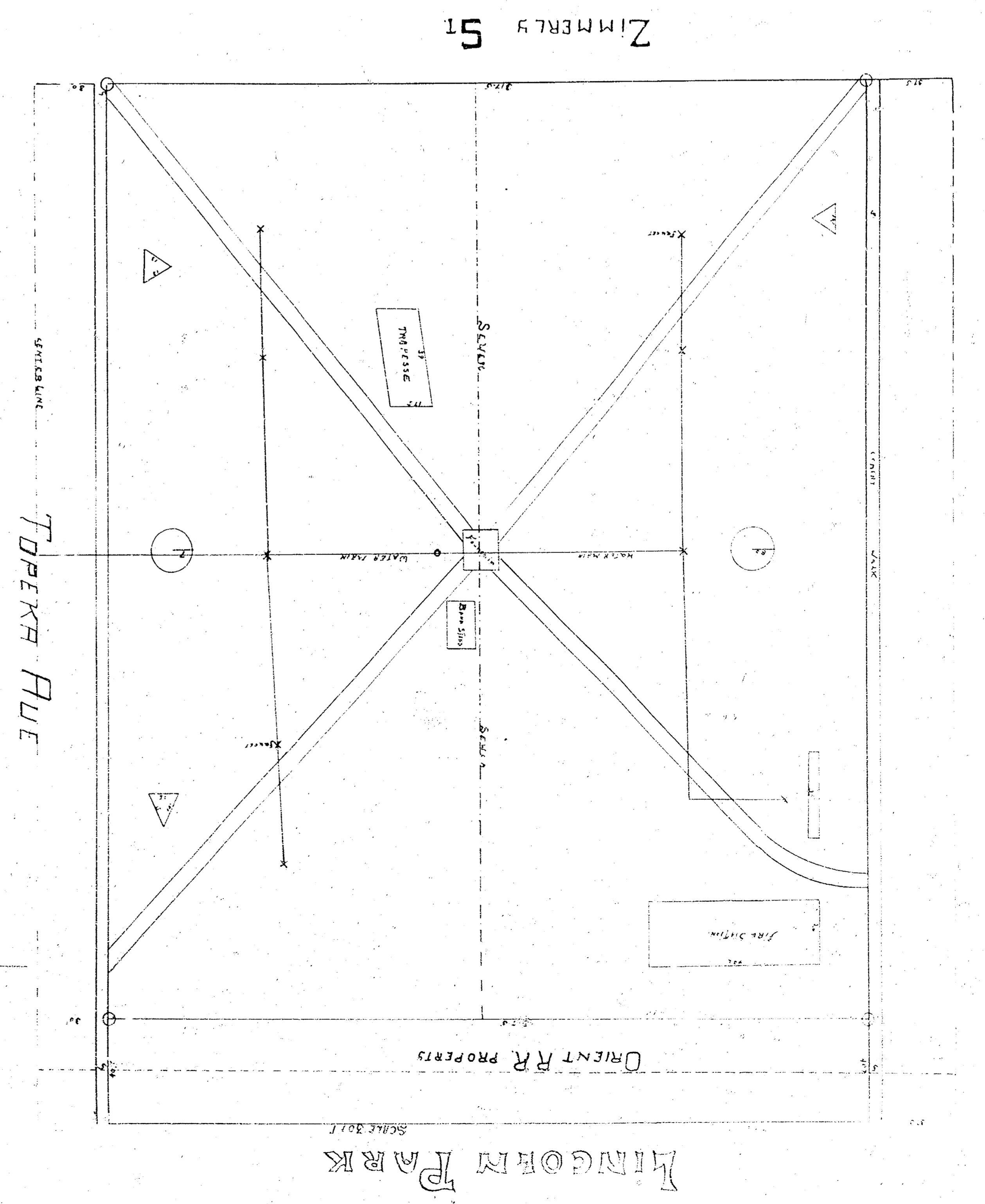
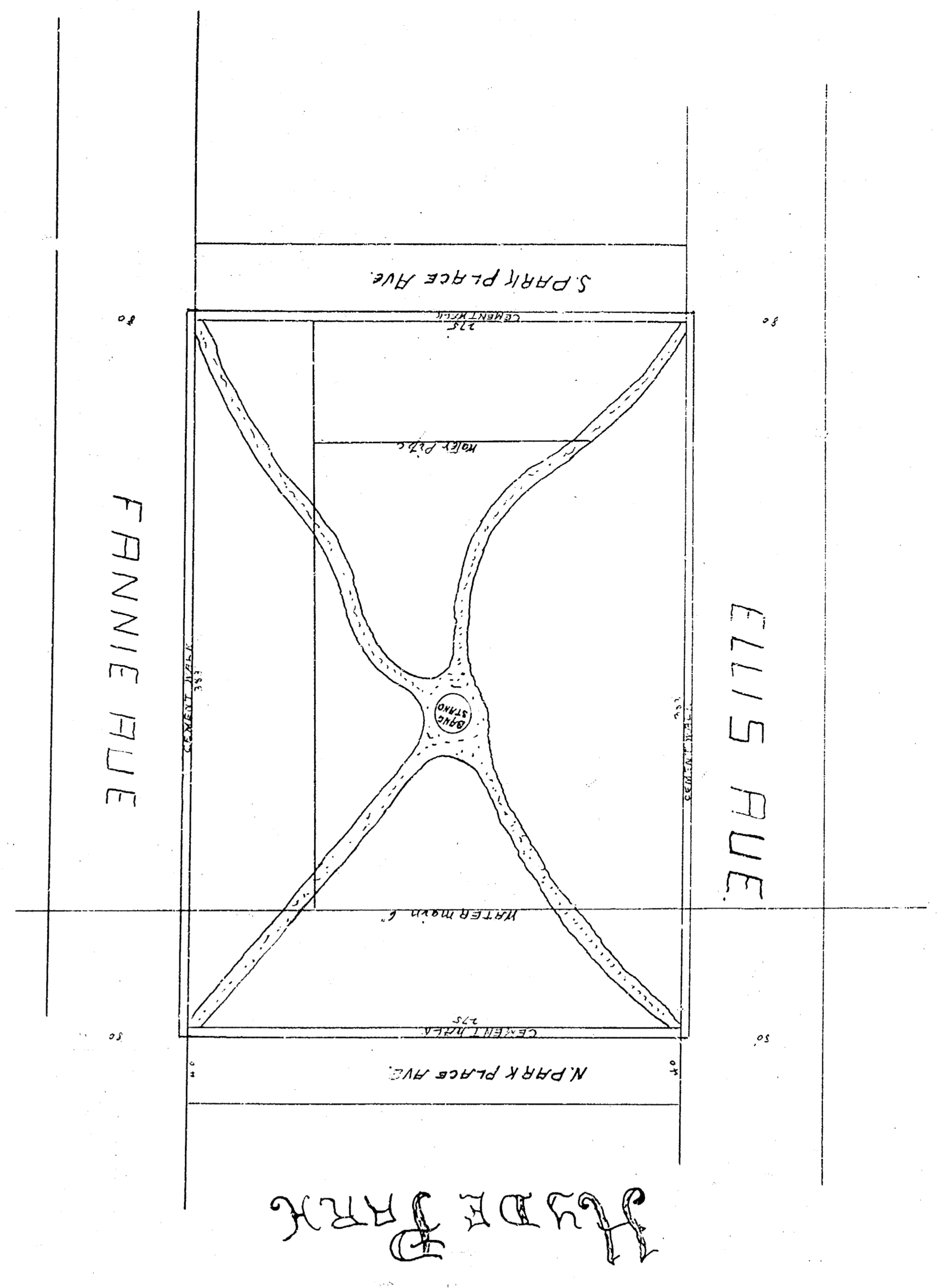


Linwood Park

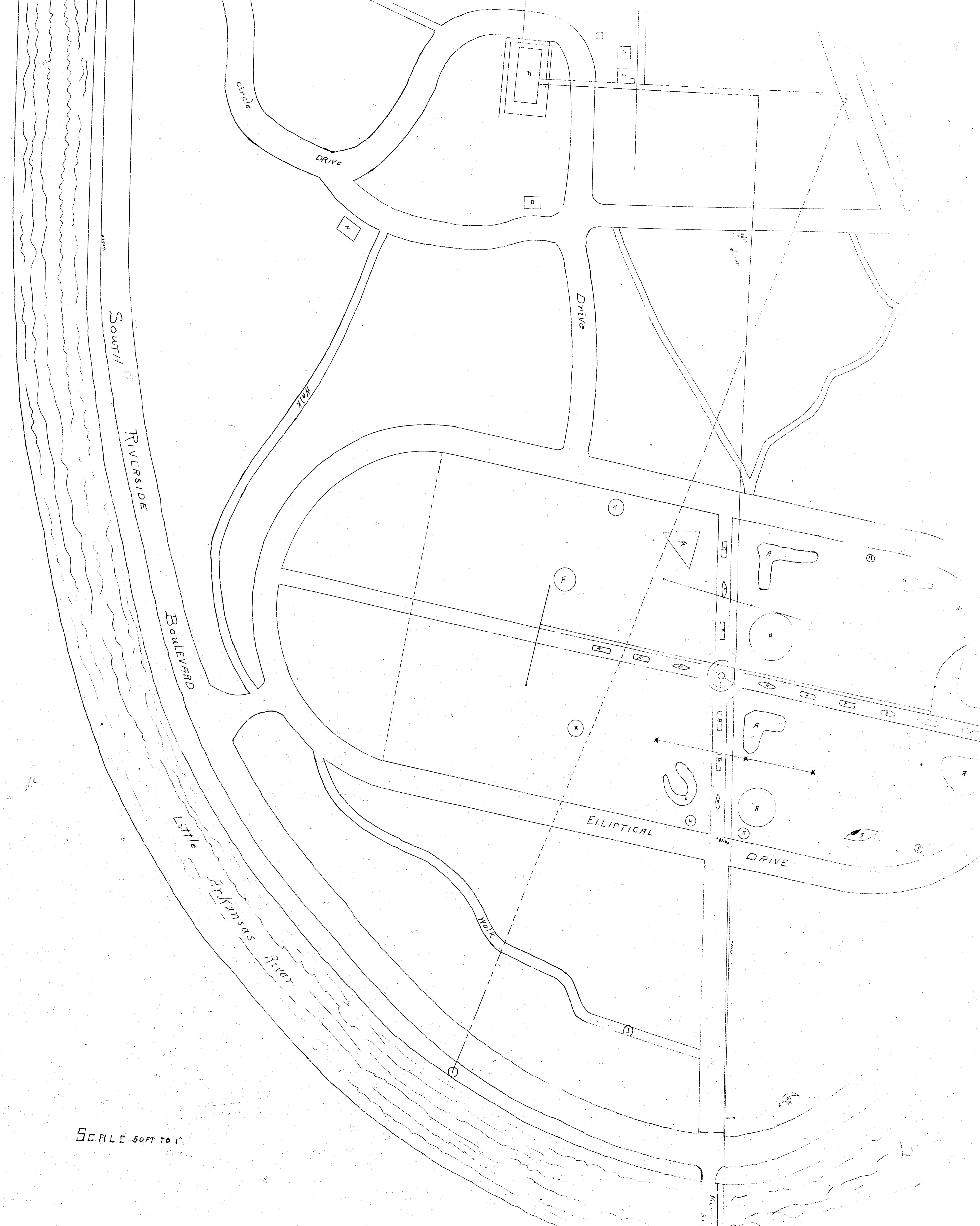
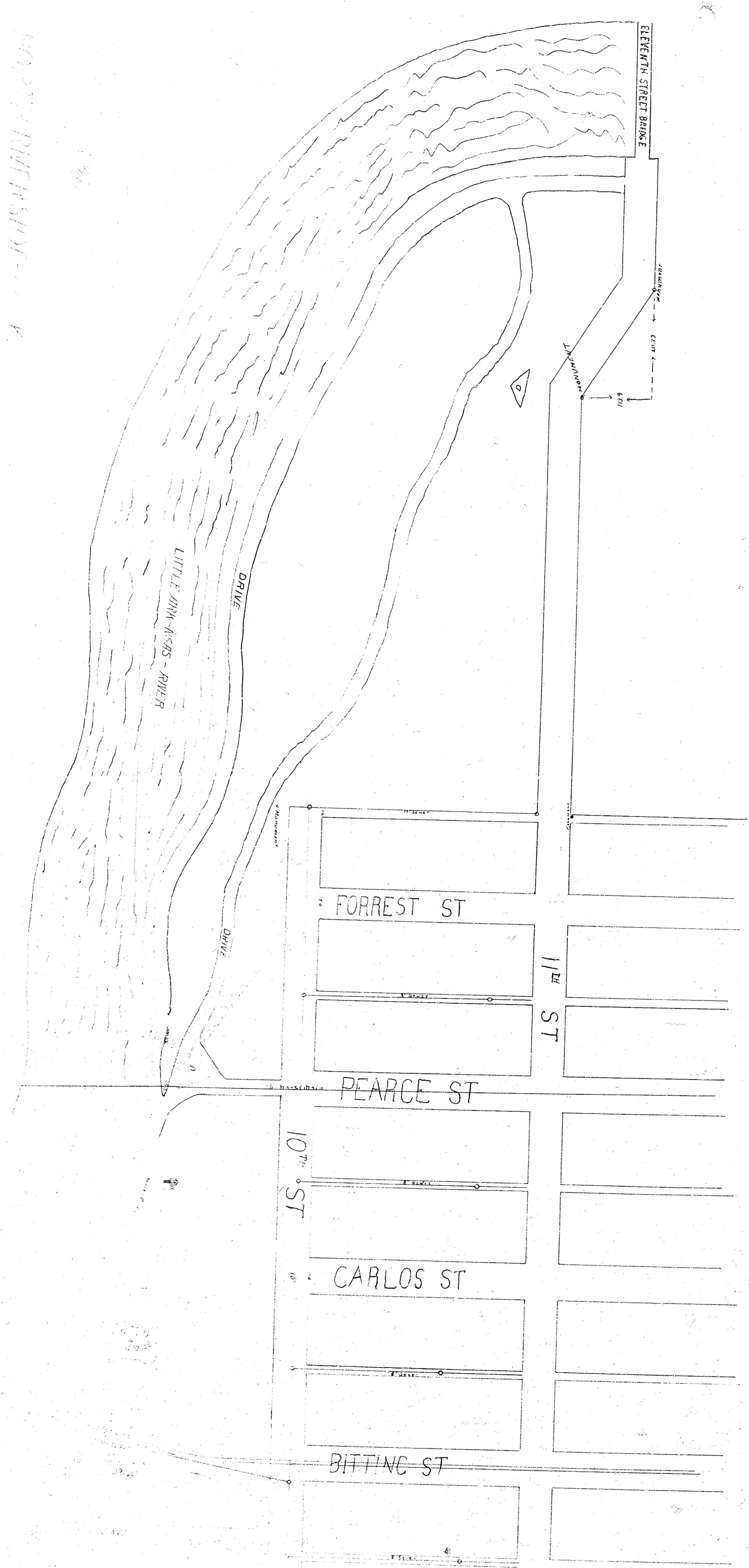
M. HINKEY ARCHT
SCALE 1/8" = 10' 0"



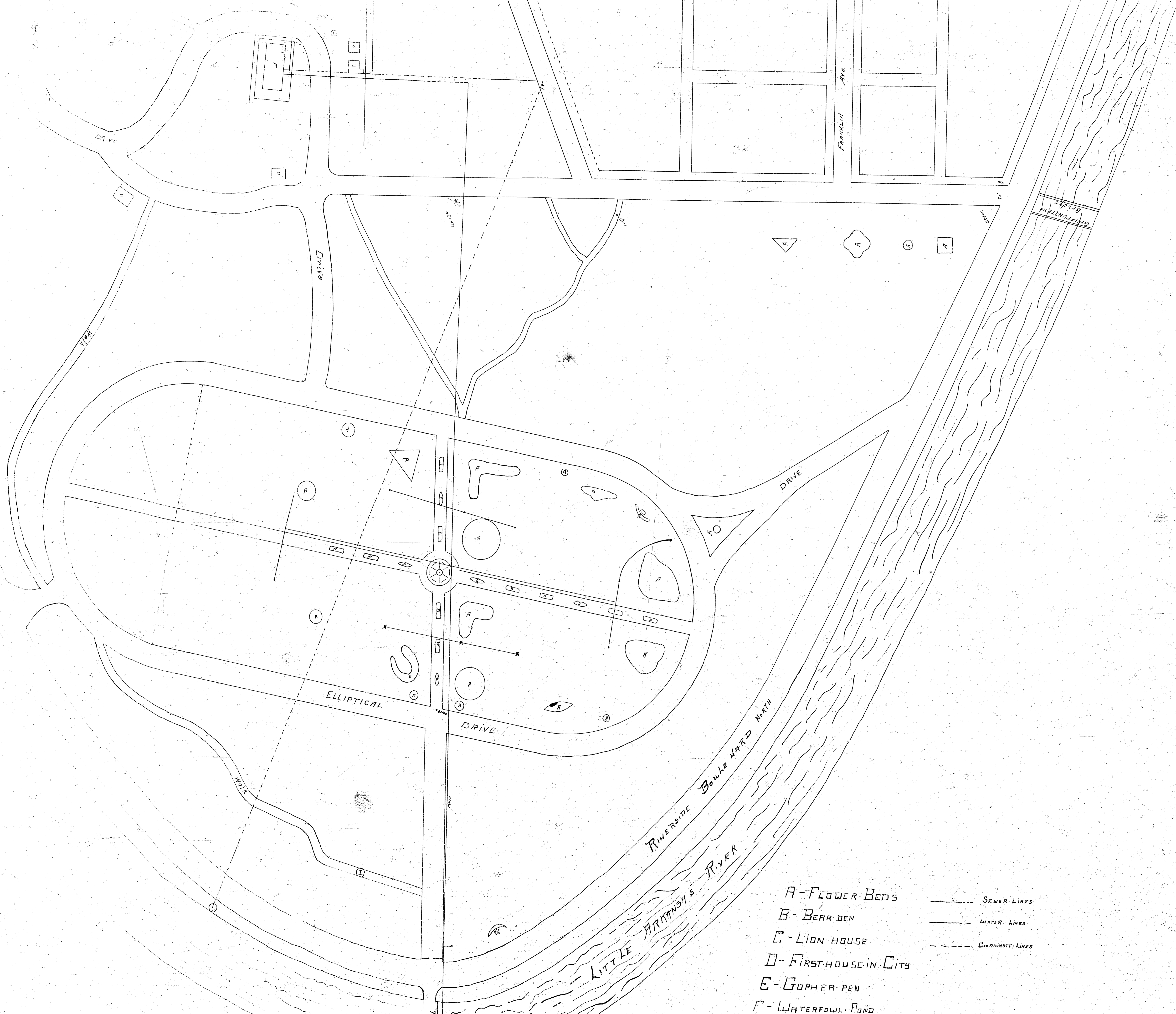


- A Flower Beds
- B Widened Path
- C Garden 8th House
- E Ladies 8th House
- D City Building Ground

MAP OF RIVERSIDE



SCALE 50 FT TO 1"



- A - FLOWER BEDS
- B - BEAR DEN
- C - LION HOUSE
- D - FIRST HOUSE IN CITY
- E - GOPHER PEN
- F - WATERFOWL POND
- SEWER LINES
- WATER LINES
- COORDINATE LINES