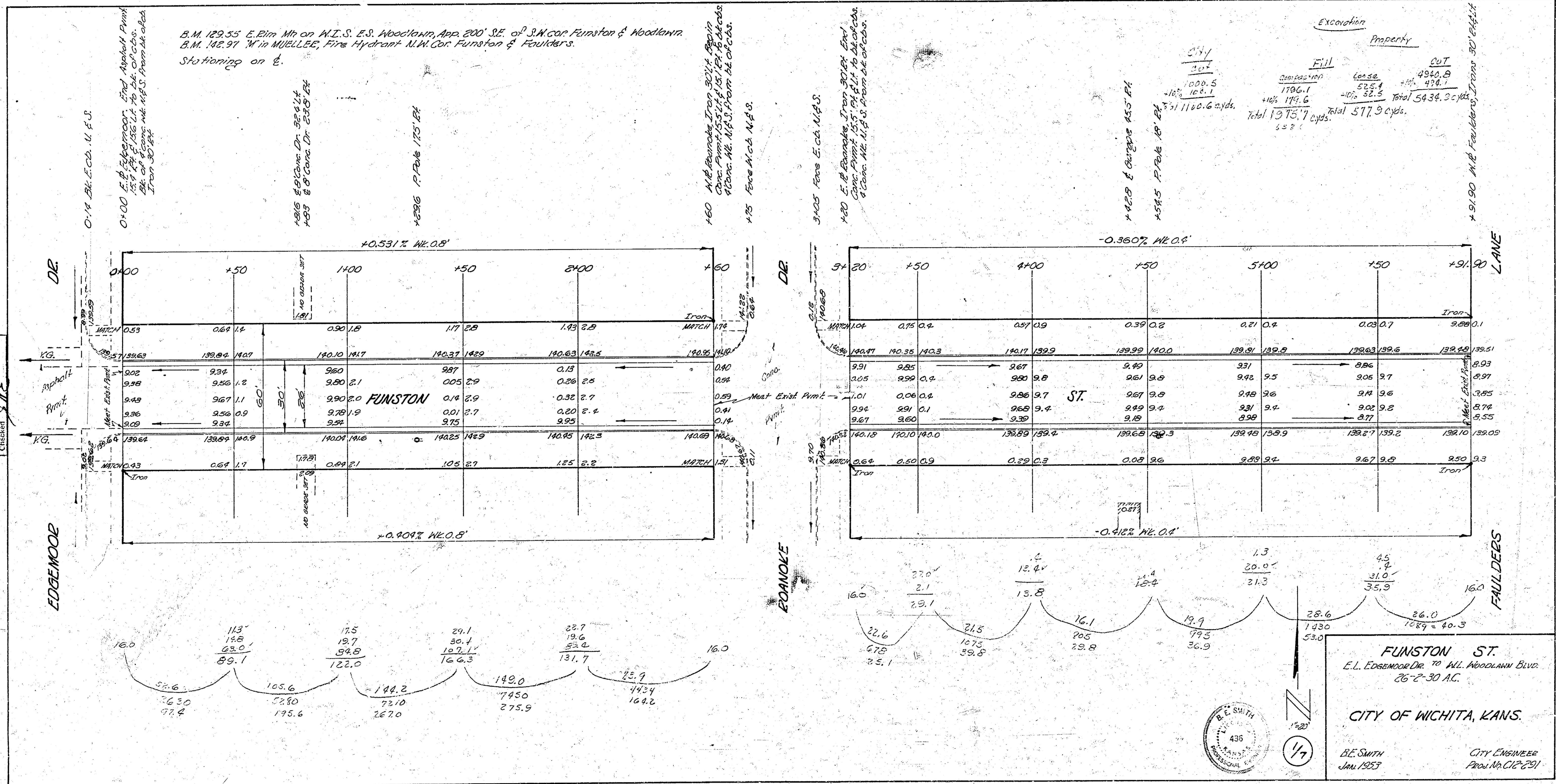
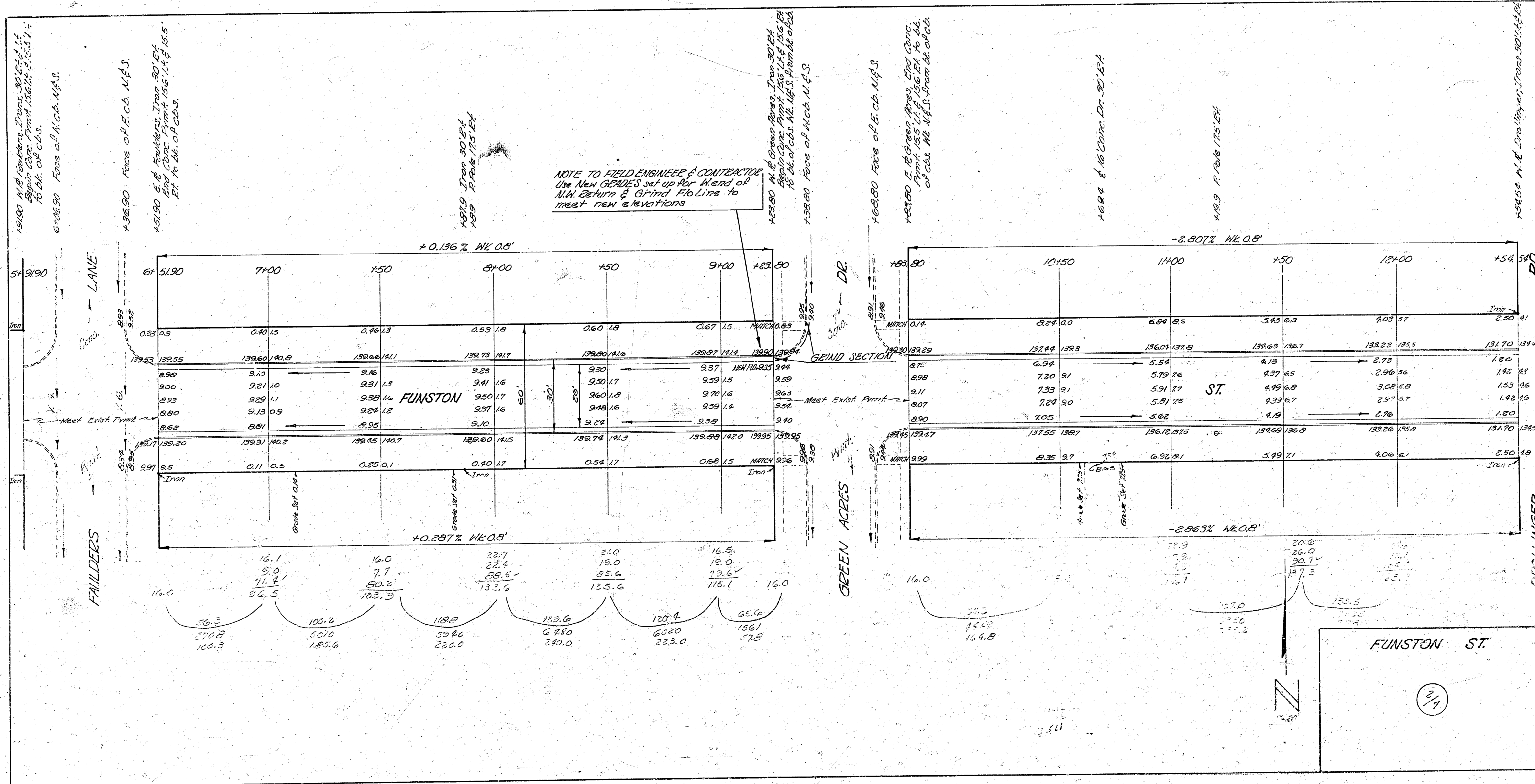


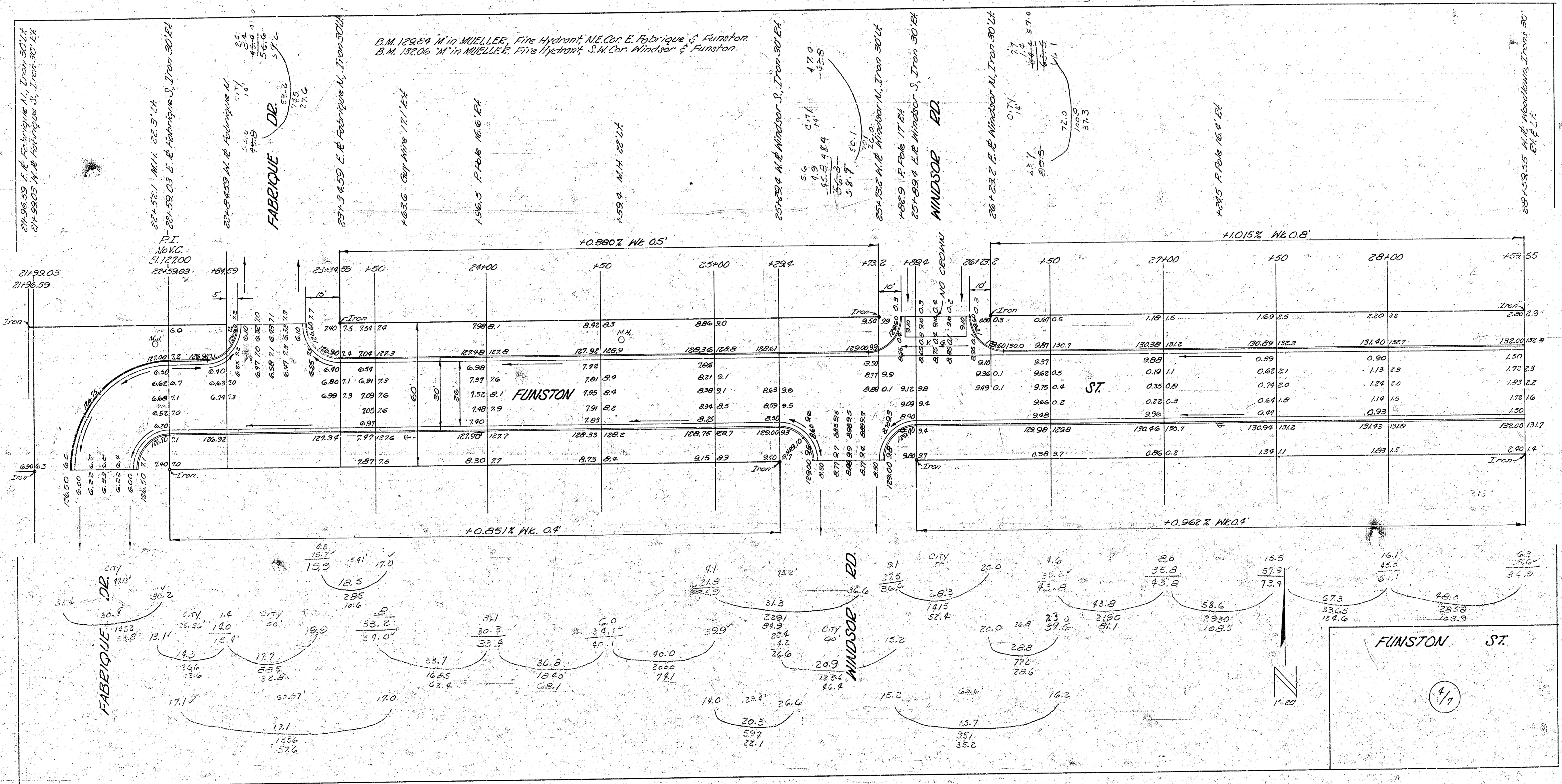
B.M. 129.35 E. Elm Mt on N.E.S. E.S. Woodlawn, App. 200' SE of S.W. cor Funston & Woodlawn.
 B.M. 142.91 "10' to MUELLEB, Fire Hydrant N.W. Cor Funston & Faulders.
 Stationing on E.

Excavation		Property	
Fill	Excavation	Excavation	Cut
1786.1	665.8	665.8	4940.9
1786.1	52.4	52.4	434.1
142.6	-10.5	-10.5	Total 5434.2 c.yds.
Total 1375.7 c.yds.		Total 577.9 c.yds.	



FUNSTON ST.
 E.L. EDGEWOOD DR. TO W.L. WOODLAWN BLVD.
 26'-0" x 30' A.C.
CITY OF WICHITA, KANS.
 B.E. SMITH
 Jan 1953
 CITY ENGINEER
 Proj. No. CIP 291





BLVD

WOODLAWN

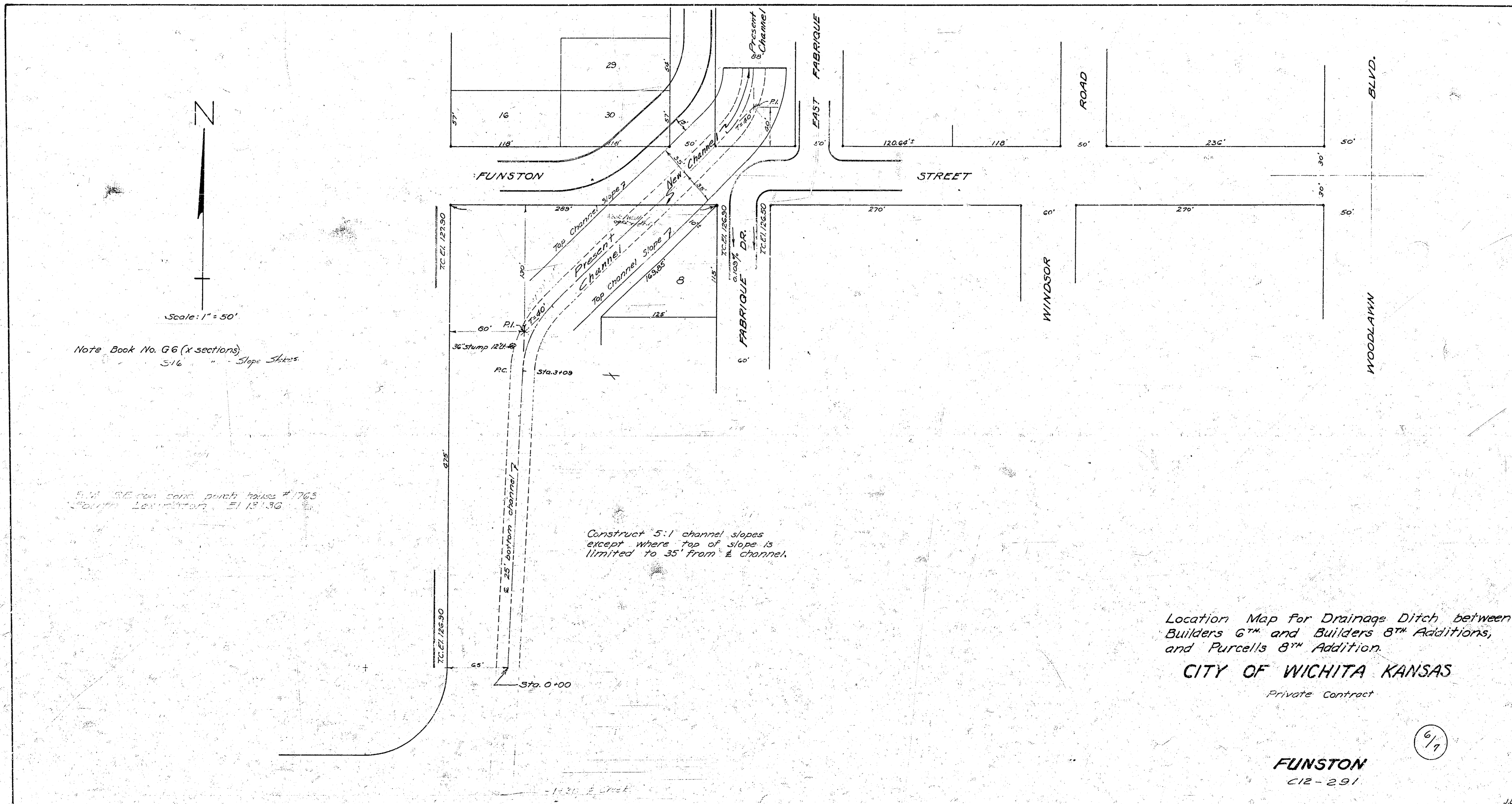


Scale: 1" = 50'

Note Book No. G6 (x-sections)
S16 " Slope Skies

5.4' 36" from center punch holes # 1763
36" from center punch holes # 1763

Construct 5:1 channel slopes
except where top of slope is
limited to 35' from channel.



Location Map for Drainage Ditch between
Builders 6th and Builders 8th Additions,
and Purcell's 8th Addition.
CITY OF WICHITA KANSAS
Private Contract

FUNSTON
C12-291

6/7

J.L.A.