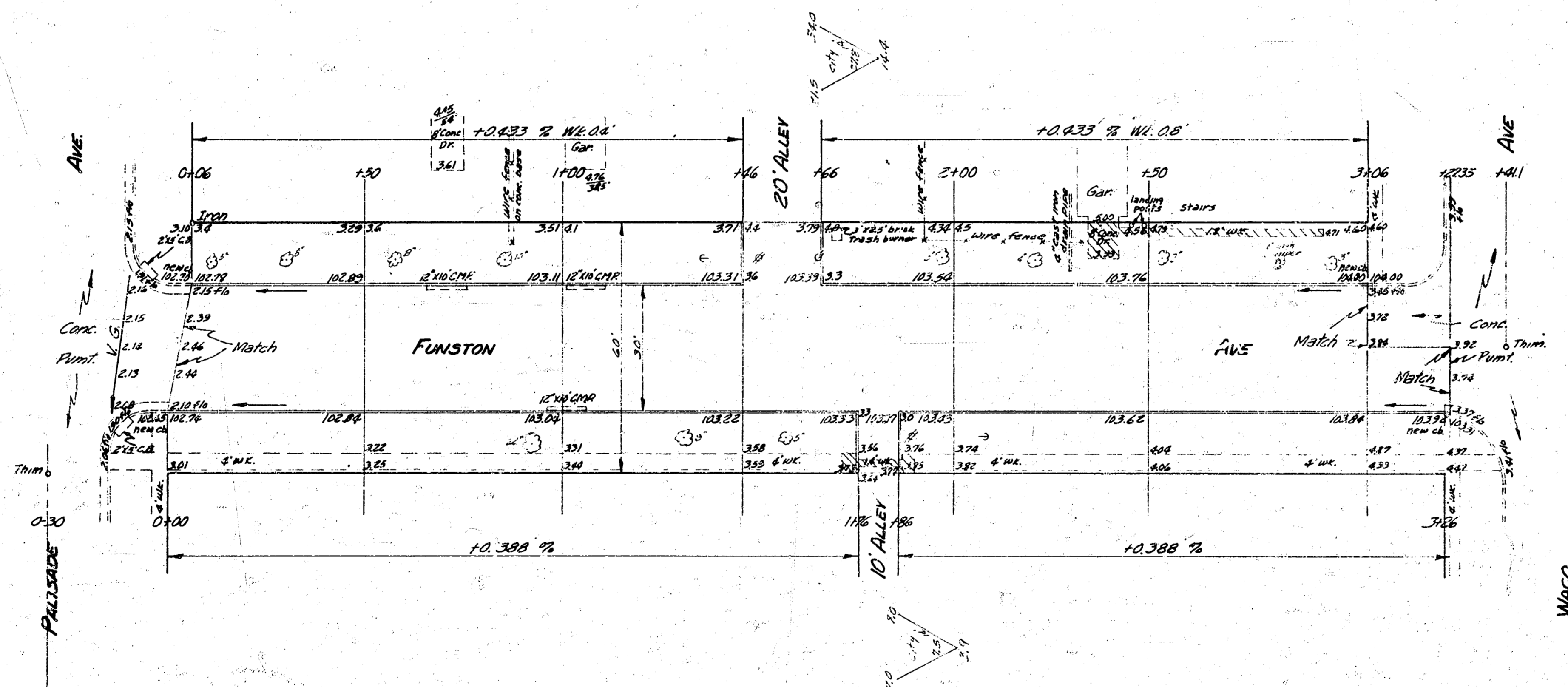
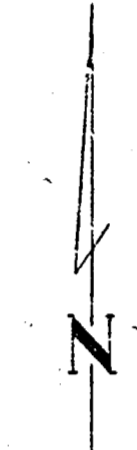
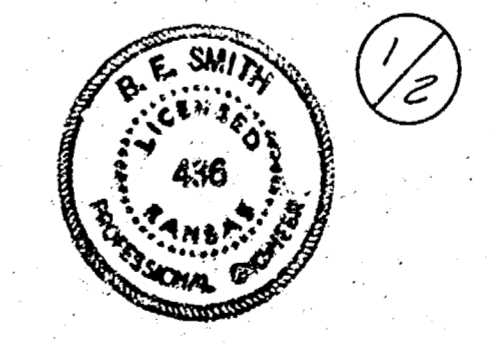


B.M. 104.54 "W" in East Westgate front wt. N. NW cor. Waco & Funston
 Starting on E



NOTE
 FIELD ENGINEER & CONTRACTOR: All entrance pipes are
 to be disposed of in accordance with dirt checkers instructions.

Excavation		Fill	
City	Prop	City	Prop
50.4	229.9	0	0
18 1/2	23.0		
33.4 cu yds	252.9 cu yds		



FUNSTON
 E.L. PALISADE TO W.L. WACO
 30' CONC. & CA.
 CITY OF WICHITA KANSAS
 B.E. SMITH CITY ENGINEER
 DEC. 1954 PROJ. No. CM-315