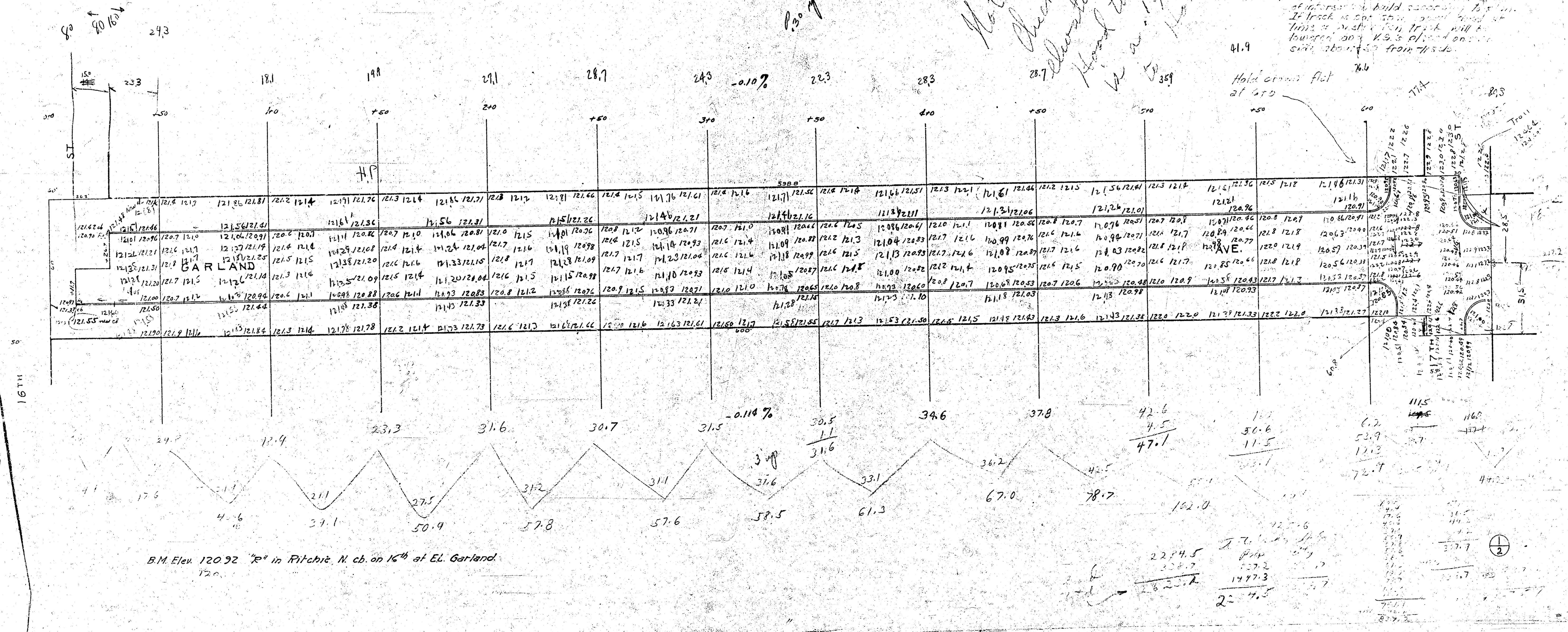


1942  
 GARLAND AV. — N.L. 16<sup>TH</sup> TO S.L. 18<sup>TH</sup>  
 30-C.I.

Note:  
 Check with and No.  
 elevations at 17th +  
 Road to be same since  
 it is a 1st grade road.

Hold cross flat  
 at 570



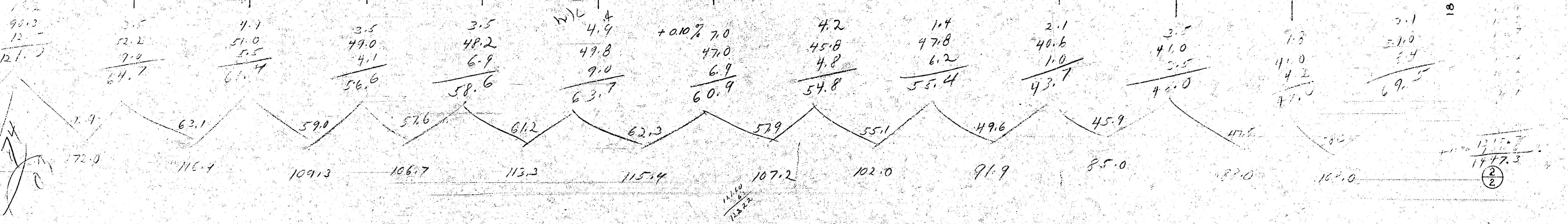
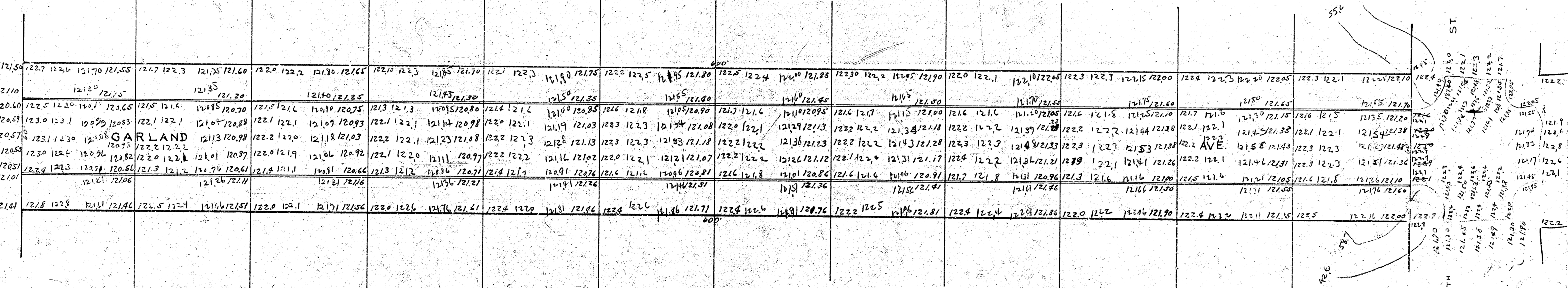
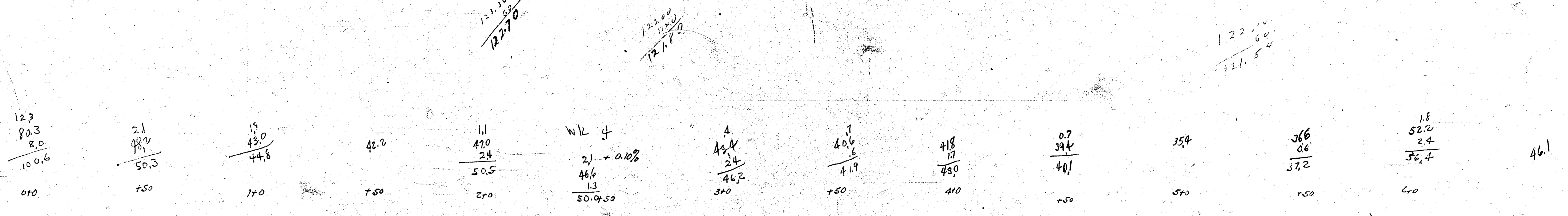
B.M. Elev. 120.92 "P" in Pitche. N. ab. on 16<sup>th</sup> at E. Garland.  
 120.

224.5  
 220.7  
 28.8  
 2 = 47.5

111.5  
 116.8  
 117.8  
 117.7

⊙

NOTE - Hold crown  
flat at N.L. 17<sup>th</sup> and  
change to Full crown  
at C.R.S.



ST  
18<sup>TH</sup>

121.0  
120.0

107.2

117.3  
117.3