

PHASE I
 PAVING & INCIDENTAL DRAINAGE FOR
WOODLAND ESTATES
 GATEWOOD : FROM THE NORTH LINE OF CENTRAL TO THE EAST LINE OF WOODLAND ESTATES
PROJECT NO.
472 76-245-81592-000-000-001
 CITY OF WICHITA, KANSAS
 MICHAEL E. LINDEBAK, CITY ENGINEER
 FEBRUARY, 1987

GENERAL NOTES

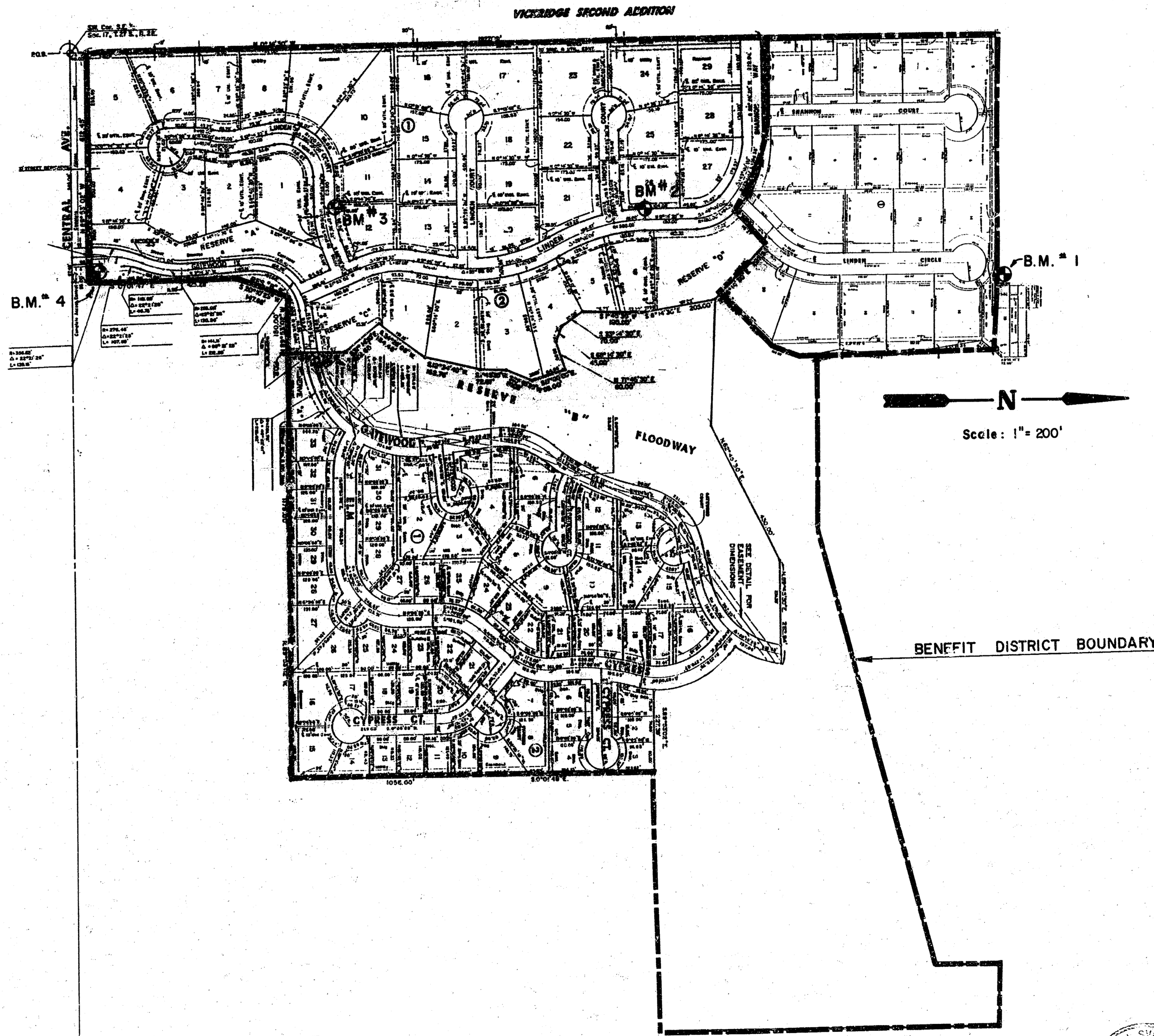
1. THE CONTRACTOR SHALL BE RESPONSIBLE FOR PRESERVING PROPERTY IRONS. THE CONTRACTOR SHALL BE REQUIRED TO RE-ESTABLISH ANY PROPERTY IRONS WHICH ARE DAMAGED OR DESTROYED BY HIS CONSTRUCTION OPERATIONS. SUCH IRONS SHALL BE RE-ESTABLISHED BY A LICENSED LAND SURVEYOR OR A LICENSED PROFESSIONAL ENGINEER IN ACCORDANCE WITH STATE LAWS.
2. TREES TO BE REMOVED ARE MARKED . ALL TREES WHICH IN THE OPINION OF THE FIELD ENGINEER CAN BE SAVED, SHALL BE SAVED.
3. CONTRACTOR SHALL NOTIFY THE UTILITY COMPANIES OF CONSTRUCTION SCHEDULING.
4. EXISTING UTILITIES AND THEIR LOCATIONS, AS SHOWN ON THE PLANS, REPRESENT THE BEST INFORMATION OBTAINABLE FOR DESIGN. LOCATION INFORMATION HAS BEEN OBTAINED FROM THE VARIOUS UTILITY COMPANIES AND IS EITHER FROM COMPANY RECORD DRAWINGS OR COMPANY PROVIDED FIELD LOCATIONS. THE PLAN LOCATIONS SHOWN ARE NOT GUARANTEED. ADDITIONAL EXISTING UTILITIES MAY ALSO BE ENCOUNTERED.

NOTE: NOTIFY THE FOLLOWING COMPANIES PRIOR TO ANY EXCAVATION:

ARKLA GAS COMPANY	942-8360
BELL TELEPHONE COMPANY	1-316-671-2115
CABLEVISION	262-0661
KP&L COMPANY	263-7511
KANSAS GAS & ELECTRIC	264-1141
KANSAS ONE-CALL	1-800-344-7233
CITIES SERVICE	524-0491

BENCH MARKS

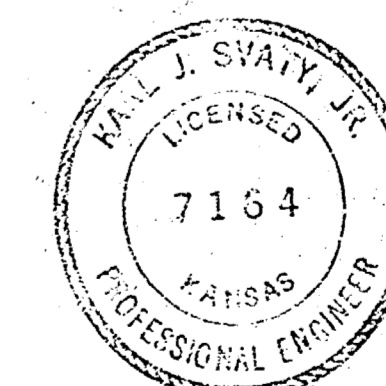
- B.M. #1 SPK STEP IN COR. FC POST
 660' E. & 40' S. OF CTR.
 SEC. 17, T27S, R2E
 ELEV. = 176.09'
- B.M. #2 TOP OF 5/8" BAR & CAP AT
 P.C. ON E. LINE OF LOT 26,
 BLK 1, WOODLAND ESTATES
 ELEV. = 167.32'
- TRM #3 TOP OF 5/8" BAR & CAP AT
 WEST P.C. IRON ON LINDEN
 COURT ON LOT 12, BLK 1,
 WOODLAND ESTATES
 ELEV. = 162.82'
- B.M. #4 CITY OF WICHITA BENCH MARK
 DISC. ON THE N.E. COR. OF
 RCB AT CENTRAL & GYPSUM CREEK
 ELEV. = 157.24'



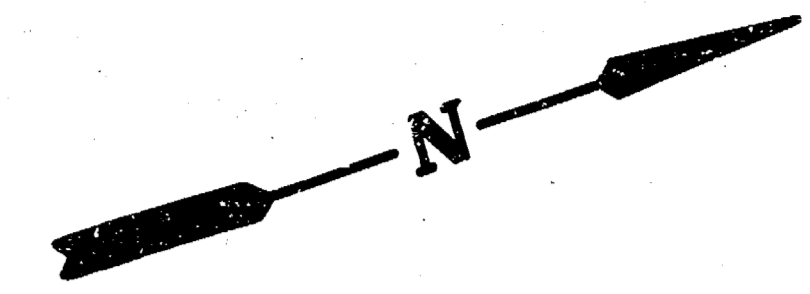
INDEX TO DRAWINGS

SHEET NO.	DESCRIPTION
1	TITLE SHEET
2	RCB CULVERT
3	DETAILS
4	SOIL SAVER

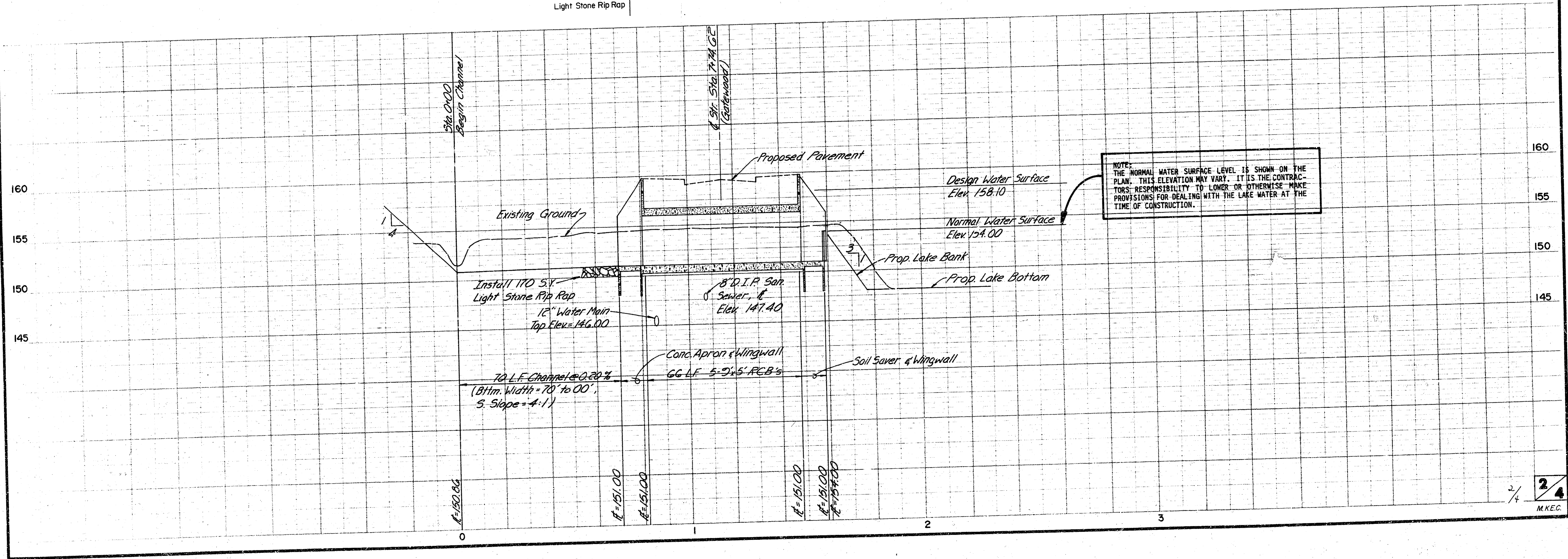
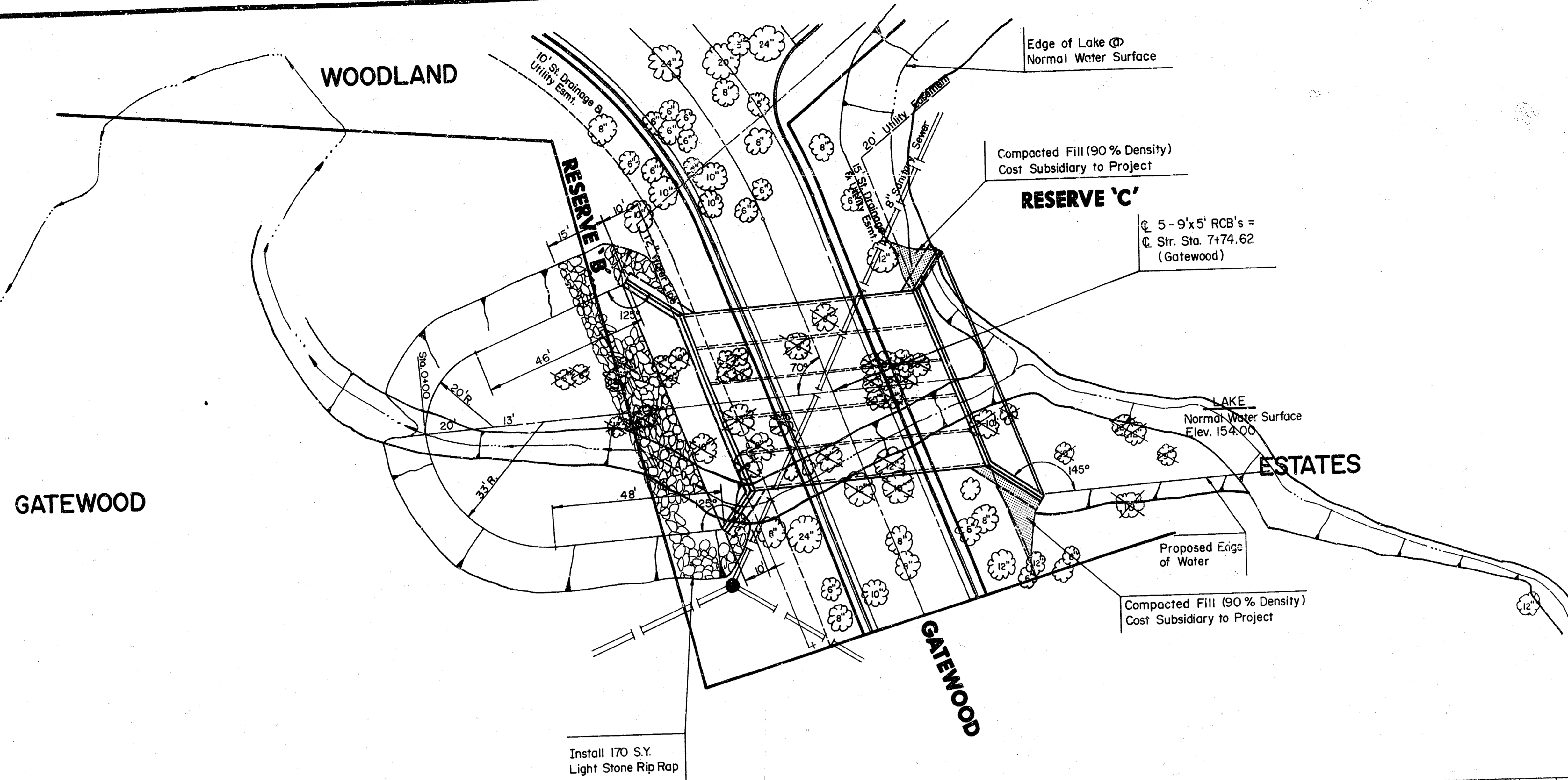
	WOODLAND ESTATES	Design KJS / FBN Drawn by SJM Checked by DSS Date 2-16-87 Job no.
	PAVING & INCIDENTAL DRAINAGE	
MID-KANSAS ENGINEERING CONSULTANTS PA 3500 NORTH ROCK ROAD BUILDING 1800 WICHITA, KANSAS 67226		Sheet 1 of 4



FILMED FROM THE BEST AVAILABLE COPY.....

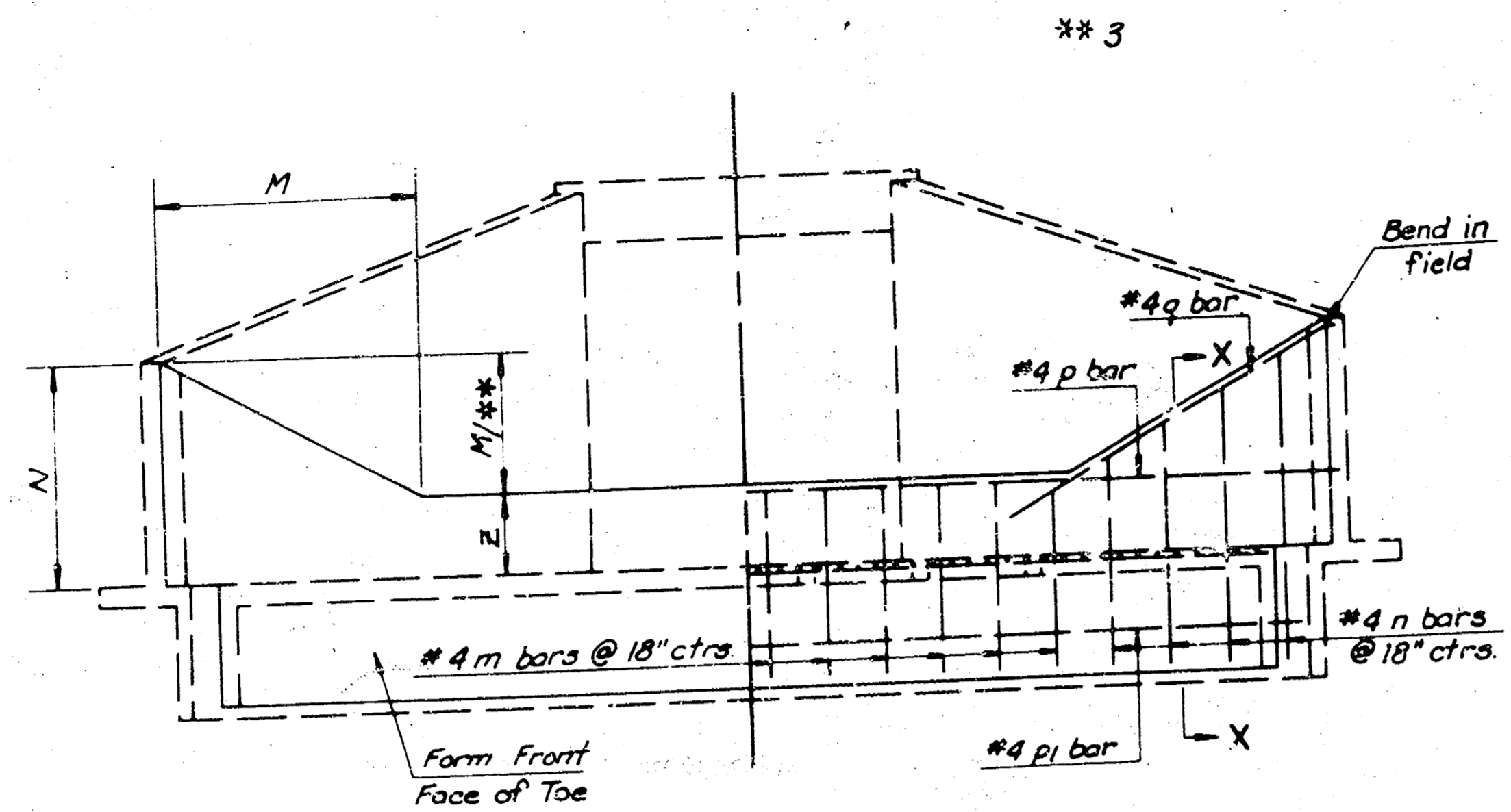


SCALE
1" = 20' Horiz.
1" = 5' Vert.

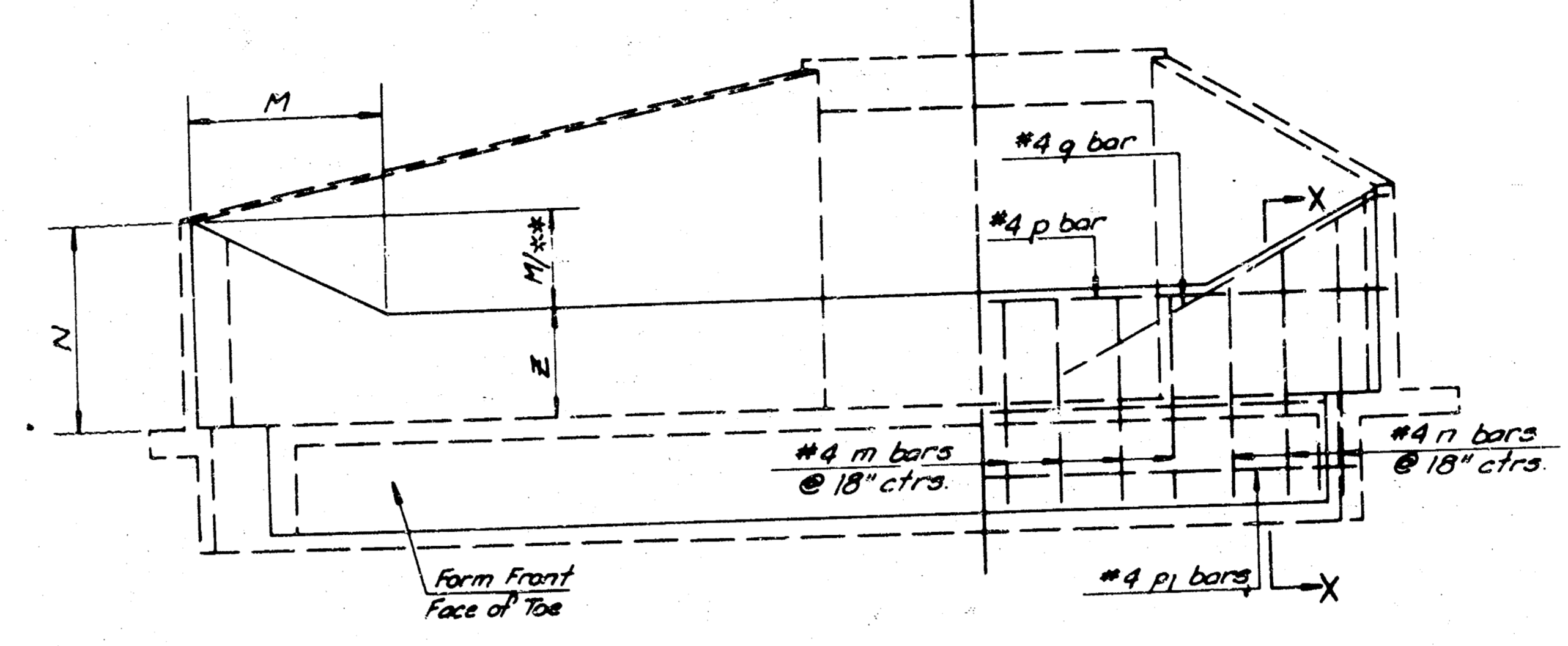


NOTE:
THE NORMAL WATER SURFACE LEVEL IS SHOWN ON THE PLAN. THIS ELEVATION MAY VARY. IT IS THE CONTRACTOR'S RESPONSIBILITY TO LOWER OR OTHERWISE MAKE PROVISIONS FOR DEALING WITH THE LAKE WATER AT THE TIME OF CONSTRUCTION.

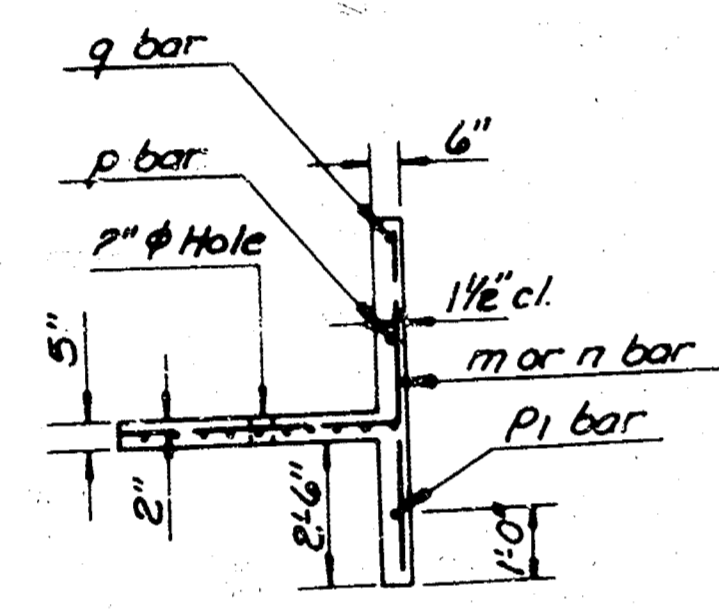
STATION	7+74.62		B = 10'-0" Skew 20° RT. Z = 3'-0"	
Letter	M	N	P	Q _L Q _S K _L K _S L _L L _S
Dimension	6'-0"	5'-0"	7'-5 1/2"	9'-6 3/8" 7'-2 1/2" 8 1/2" 4 1/2" 1'-8 3/8" 1'-2 3/8"



ELEVATION AND SECTION



ELEVATION AND SECTION

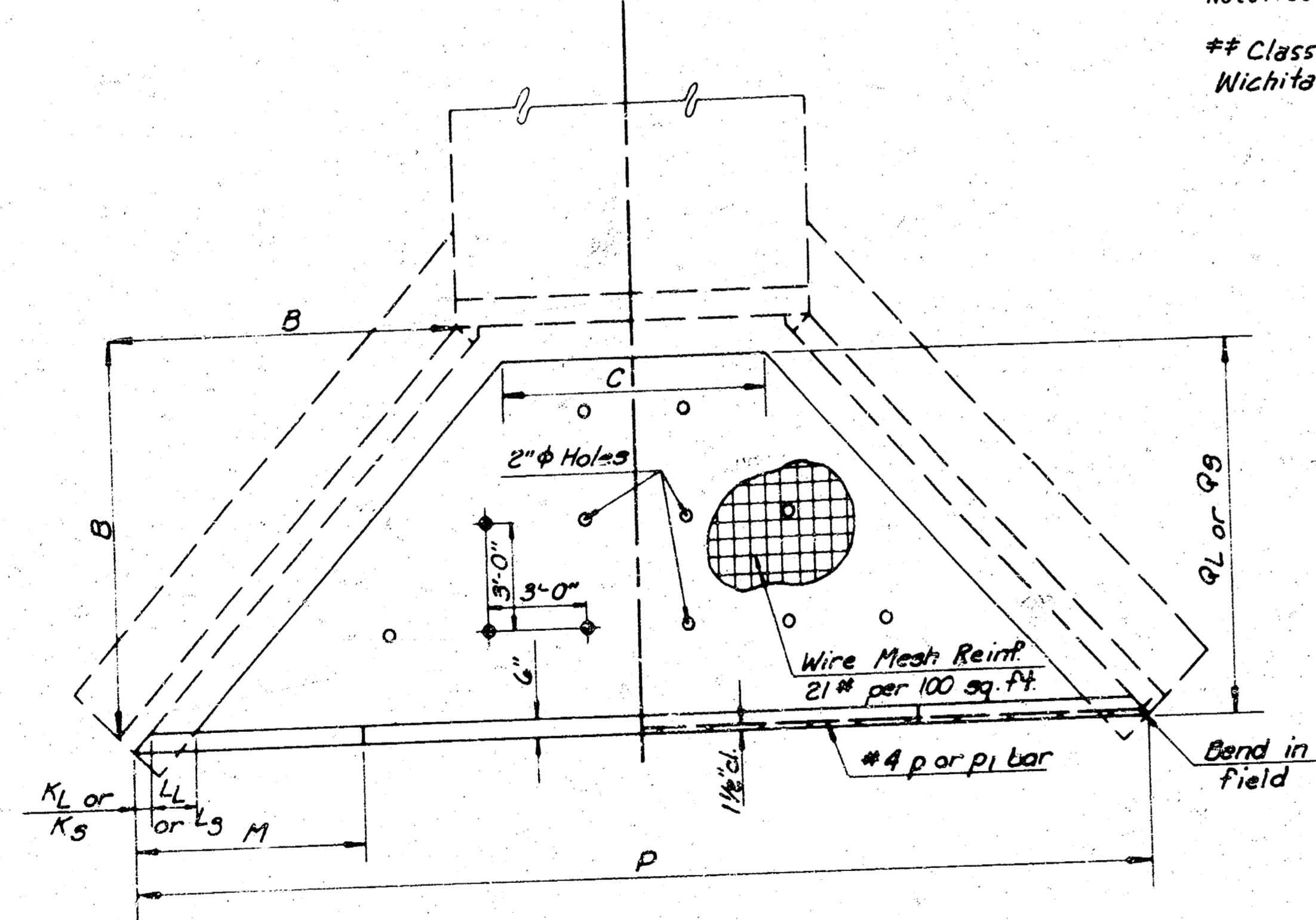


SECTION X-X

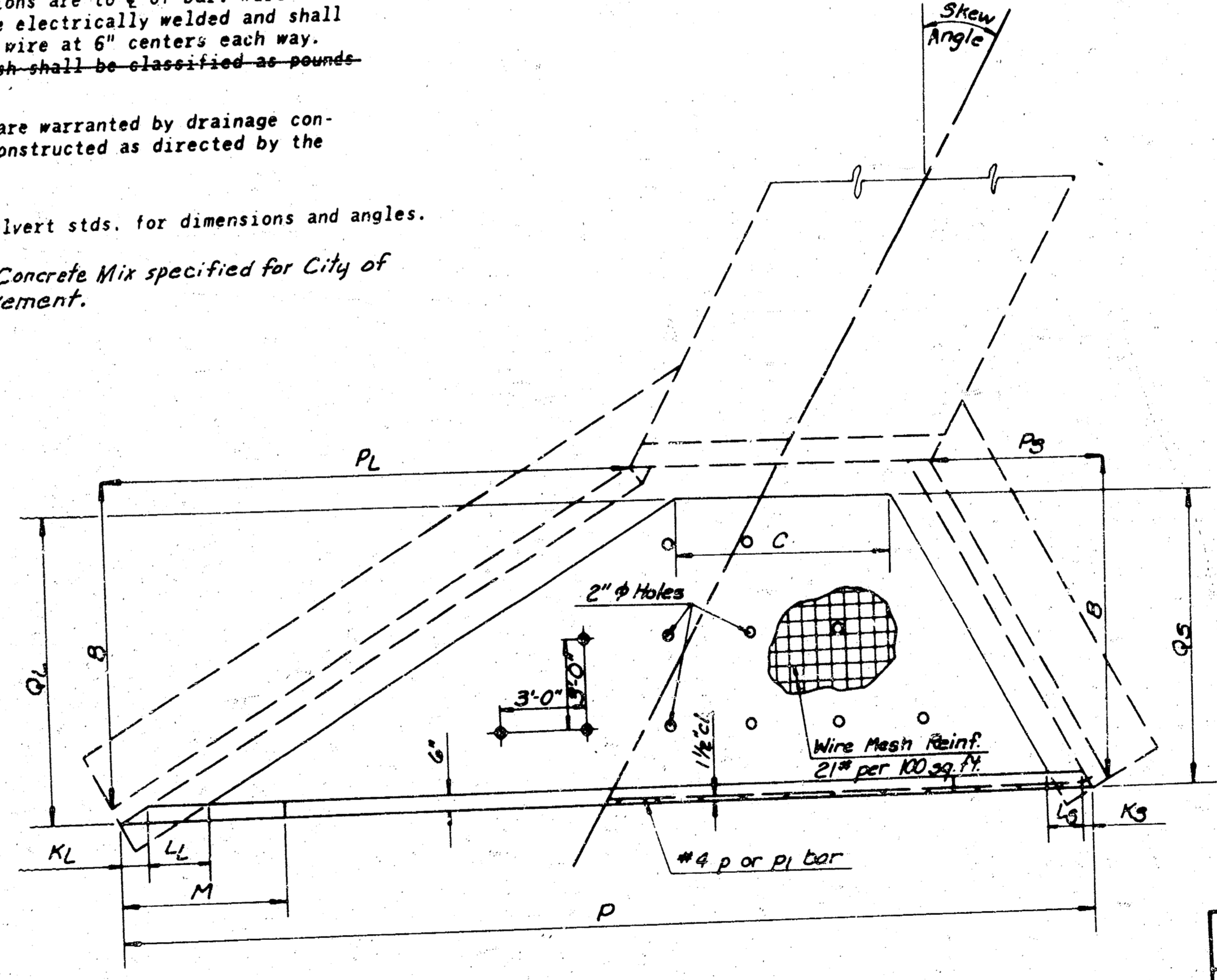
GENERAL NOTES

CONCRETE: Class A Concrete shall be used throughout. All exposed edges shall be finished with an edging tool.
 REINFORCING: All dimensions are to ϕ of bar. Wire reinforcing mesh shall be electrically welded and shall be composed of No. W 1.4 wire at 6" centers each way. Weight of reinforcing mesh shall be classified as pounds of reinforcing steel.
 When holes in the apron are warranted by drainage conditions, they shall be constructed as directed by the Engineer.

Note: See appropriate culvert stds. for dimensions and angles.
 ** Class A Concrete = Concrete Mix specified for City of Wichita Concrete Pavement.



PLAN



PLAN - SKEW

STATION	M	N	P	Q _L	Q _S	K _L	K _S	L _L	L _S
Letter	M	N	P	Q _L	Q _S	K _L	K _S	L _L	L _S
Dimension	m	n*	p	q	q	q	q	q	q
Bar									
Number									
Length									

STATION	M	N	P	Q _L	Q _S	K _L	K _S	L _L	L _S
Letter	M	N	P	Q _L	Q _S	K _L	K _S	L _L	L _S
Dimension	m	n*	p	q	q	q	q	q	q
Bar									
Number									
Length									

STATION	M	N	P	Q _L	Q _S	K _L	K _S	L _L	L _S
Letter	M	N	P	Q _L	Q _S	K _L	K _S	L _L	L _S
Dimension	m	n*	p	q	q	q	q	q	q
Bar									
Number									
Length									

STATION	M	N	P	Q _L	Q _S	K _L	K _S	L _L	L _S
Letter	M	N	P	Q _L	Q _S	K _L	K _S	L _L	L _S
Dimension	m	n*	p	q	q	q	q	q	q
Bar									
Number									
Length									

STATION	M	N	P	Q _L	Q _S	K _L	K _S	L _L	L _S
Letter	M	N	P	Q _L	Q _S	K _L	K _S	L _L	L _S
Dimension	m	n*	p	q	q	q	q	q	q
Bar									
Number									
Length									

STATION	M	N	P	Q _L	Q _S	K _L	K _S	L _L	L _S
Letter	M	N	P	Q _L	Q _S	K _L	K _S	L _L	L _S
Dimension	m	n*	p	q	q	q	q	q	q
Bar									
Number									
Length									

STATION	M	N	P	Q _L	Q _S	K _L	K _S	L _L	L _S
Letter	M	N	P	Q _L	Q _S	K _L	K _S	L _L	L _S
Dimension	m	n*	p	q	q	q	q	q	q
Bar									
Number									
Length									

STATION	M	N	P	Q _L	Q _S	K _L	K _S	L _L	L _S
Letter	M	N	P	Q _L	Q _S	K _L	K _S	L _L	L _S
Dimension	m	n*	p	q	q	q	q	q	q
Bar									
Number									
Length									

Quantities include apron and soil saver quantities.
 * n bars are variable. Increase by increments of 7" for B_{3.5} and 9" for B₃.
 Cut 2 each length.

LIST OF SOIL SAVERS

Station	Culvert Size	Side	Z	Skew
7+74.62	5'-9x5'	L.F.	3'-0"	20° RT.

3					
2					
1					
NO.	DATE:	REVISIONS	BY	APP'D	

DEPARTMENT OF TRANSPORTATION - KANSAS

SOIL SAVER FOR R.C. CULVERTS 4 4

STD. NO. 520+

SHEET NO. OF SCALE

DESIGNED BY: Bower

CHECKED BY: Bower

DATE: 12/16/76

QUANTITIES

QUAN. TRACKED BY: Bower

DETAILS CHECKED BY: Mecht

NOTE: ALL REINFORCING BARS ARE NO. 4 BARS