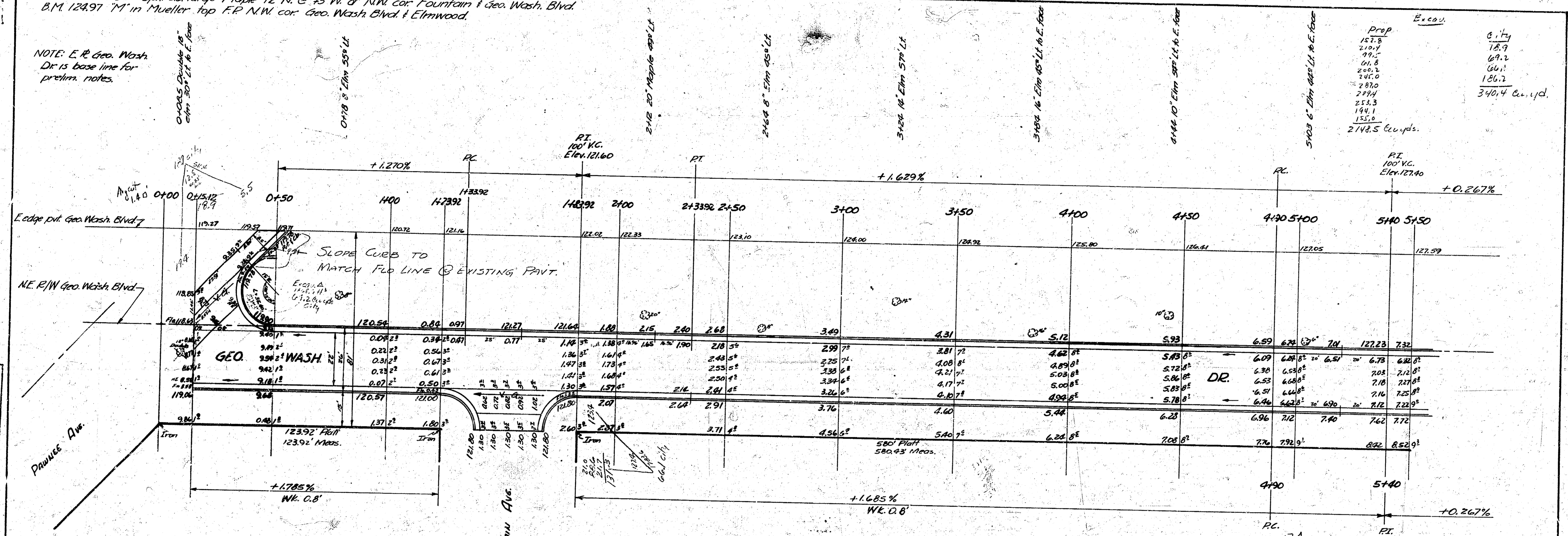


B.M. 125.83 - 60" spt. 33 large Maple 12' N @ 45' W of NW cor. Fountain & Geo. Wash. Blvd.
 B.M. 124.97 7' in Mueller top FR NW cor. Geo. Wash Blvd & Elmwood.

NOTE: E.P. Geo. Wash.
 Dr. is base line for
 prelim. notes.



Prop.	Exc.
157.8	6.17
210.9	18.9
99.5	69.2
61.8	66.1
245.3	126.2
245.0	
287.0	
219.4	
213.3	
144.1	
155.0	
2148.5	340.4

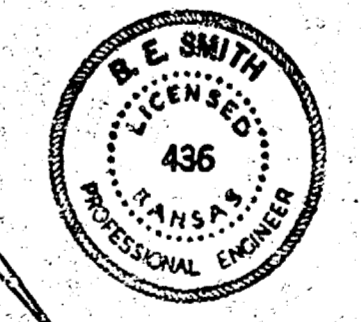
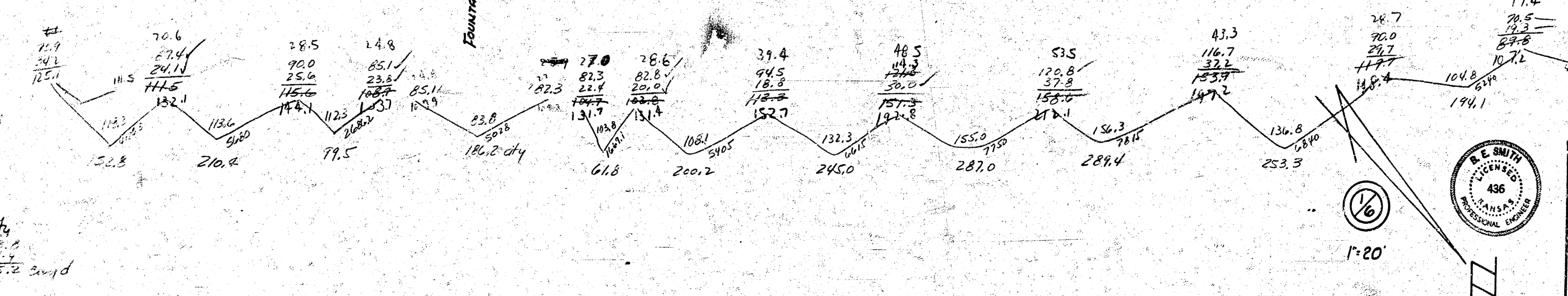
2148.5 cu yds.

Grand Total Exc.

Prop	City
2148.5	340.4
1200.0	220.2
1100.3	70.1
2049.8	220.2
2049.8	70.1

Grand Total Fill

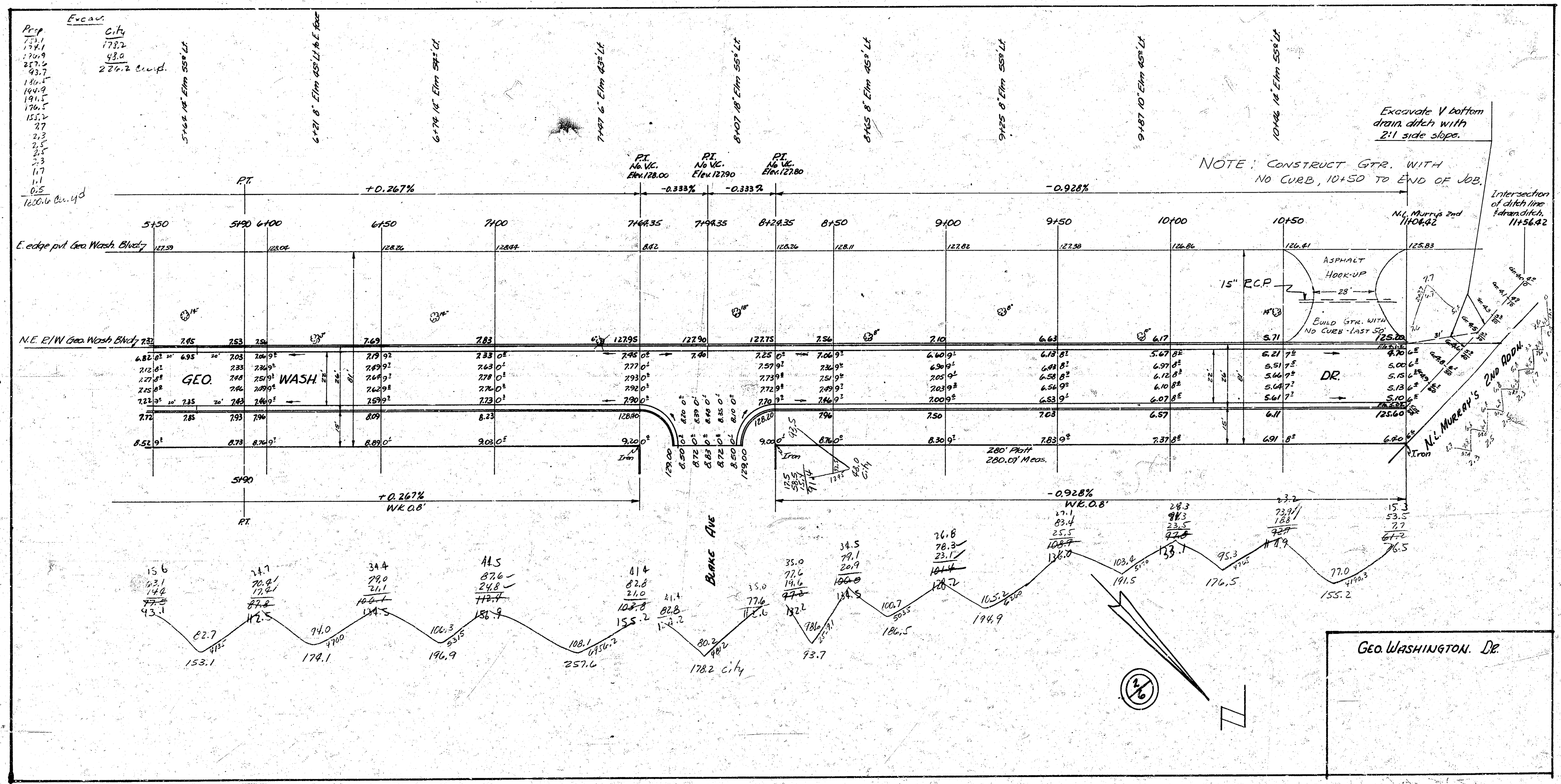
Prop	City
973.2	70.6
117.2	24.1
204.4	115.5
204.4	115.5



GEO. WASHINGTON DR.
 N.L. PAWNEE TO N.L. MURRAY'S 2ND
 22.2 26 AC.

CITY OF WICHITA, KANSAS
 D.E. SMITH CITY ENGINEER
 JAN. 21, 1953 Proj. No. C12-214

JAMES M. G. BENTLEY
 CIVIL ENGINEER
 1001 W. 17th St.
 WICHITA, KANSAS



Geo Washington Dr