

STATE OF KANSAS
STATE HIGHWAY COMMISSION

PLAN AND PROFILE OF PROPOSED
GEORGE WASHINGTON BOULEVARD

FEDERAL AID PROJECT
87M-5899(001)
WICHITA, SEDGWICK COUNTY

DISTRICT	STATE	PROJECT NO.	YEAR	SHEET NO.	TOTAL SHEETS
7	KANSAS	87M-5899(001)	1974	1	100

GRADING
STORM SEWER
PAVING
SODDING

INDEX OF SHEETS

1. Title Sheet
- 2-3. Typical Sections
- 4-16. Street Improvement Plans
- 17-24A. Pavement Details (Sh. No. 23 deleted)
- 25-28. Miscellaneous Details (Sh. No. 26 deleted)
- 29-42. Storm Drain Plans
- 43-53. Inlet and Manhole Details
- 53A. Concrete End Sections
- 54-56. R.C.B. Bridge Details
- 57-58. Summary of Quantities
59. Temporary Project Water Pollution Control
- 59A-59B. Seeding
- 60-61. Traffic Control
62. Type III Barricades (Fixed)
63. Drainage Areas
- 64-76. Pavement Striping Plans
- 77-79. Traffic Signal Plans
- 79A. Signal Installation Detail
- 80-100. Cross Sections

DESIGN DESIGNATION

ADT (1973) = 8,900
ADT (2000) = 11,200
DHW = 12"
D = 40-40
T = 4%
V = 40
COF A = NONE

CONVENTIONAL SIGNS

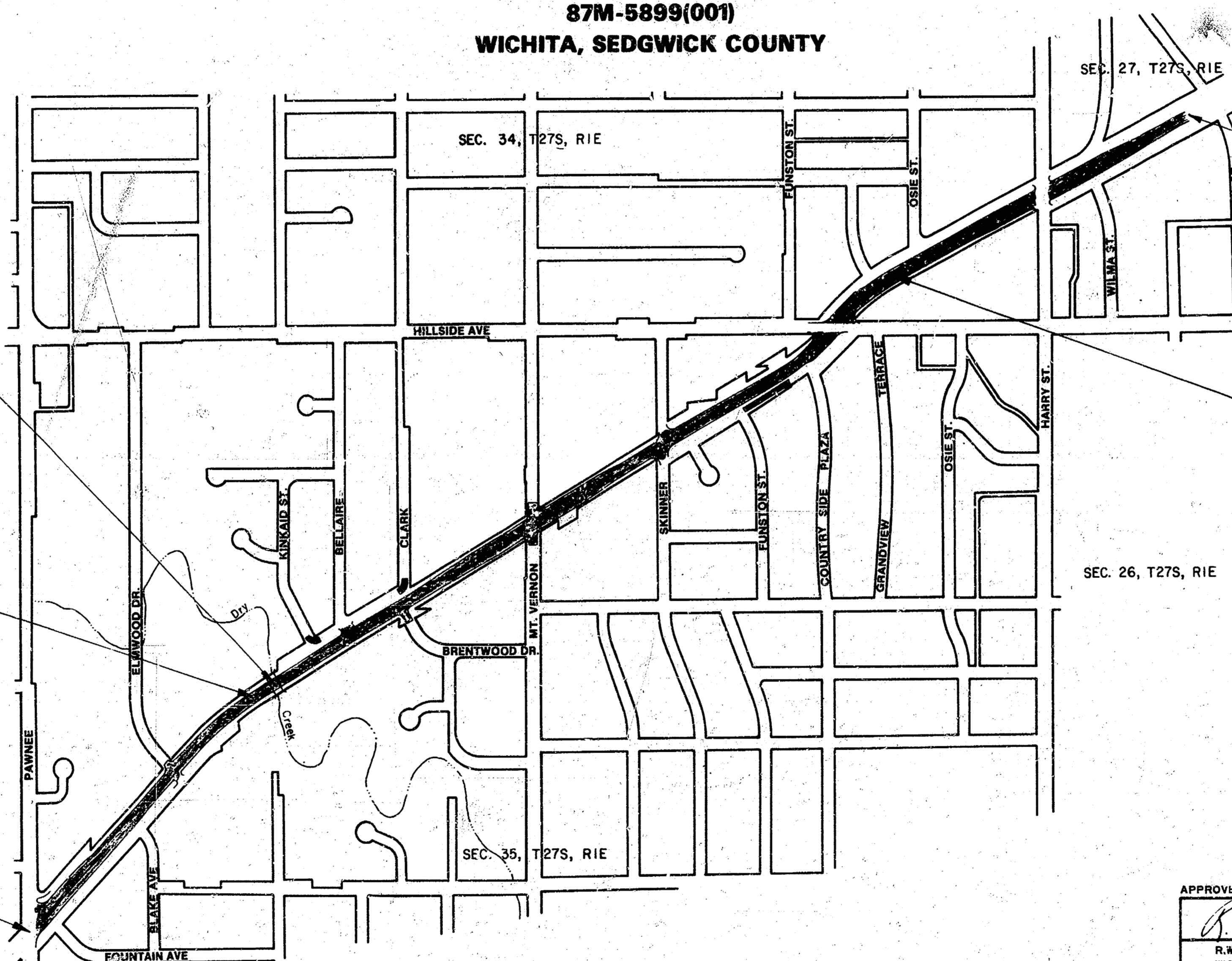
COUNTY LINE	RETAINING WALL	CENTER LINE OF PROJECT
CORPORATE LIMITS	CULVERTS	LEVEE
STATE OR NATIONAL LINE	DROP INLETS	ACCESS CONTROL
TOWNSHIP LINE	POWER LINE	TELEPHONE OR TELEGRAPH LINE
SECTION LINE	MARSH	HEDGE
GRANT LINE	TREES	GRADE ELEVATION
FENCE LINE		
GUARD FENCE		
UNFENCED PROPERTY		
RIGHT OF WAY LINE		
TRAVELLED WAY		
RAILROADS		

GROSS LENGTH OF PROJECT 7,239.44 FT.

EXCEPTIONS

ADDITIONS

NET LENGTH OF PROJECT 7,239.44 FT. 1.371 MILES
NET LENGTH OF BRIDGES 45.25 FT. 0.009 MILES
NET LENGTH OF ROAD 7,194.19 FT. 1.362 MILES



STA. 18+06.5
5'-8" x 7" x 100' R.C.B. Bridge
Extend & widen existing
3'-8" x 7" x 50' R.C.B.

EXCEPTION for Equation
Sta. 16+70.71 = 16+74.33 = 3.62'

STA. 0+00 BEGIN
Proj. 87M-5899(001)

STA. 72+50 END
Proj. 87M-5899(001)

EXCEPTION for Equation
Sta. 55+47.08 = 55+54.02 = 6.94'

Traffic to be carried across construction at the following locations:

- Mainline
- Sta. 0+00 (Pawnee Ave.)
 - Sta. 33+18.24 (Mt. Vernon Rd.)
 - Sta. 51+44.23 (Hillside Ave.)
 - Sta. 64+07.45 (Harry St.)
 - Mt. Vernon Rd.
 - Sta. 40+64.9 (Hillside Ave.)

See Sh. No. 4 for additional Traffic Control in accordance with Construction Sequencing.

APPROVED DATE April 23, 1974
S.W. Linn, P.E., CITY ENGINEER
WICHITA, KANSAS
PROJ. NO. DAKM5704

PLANS PREPARED BY
PROFESSIONAL ENGINEERING CONSULTANTS, P.A.
ENGINEERS
WICHITA, KANSAS

RECOM. FOR APPROVAL DATE

ENGINEER OF URBAN HIGHWAYS
STATE HIGHWAY COMMISSION OF KANSAS

RECOM. FOR APPROVAL DATE

ENGINEER
FEDERAL HIGHWAY ADMINISTRATION
DEPARTMENT OF TRANSPORTATION

APPROVED DATE

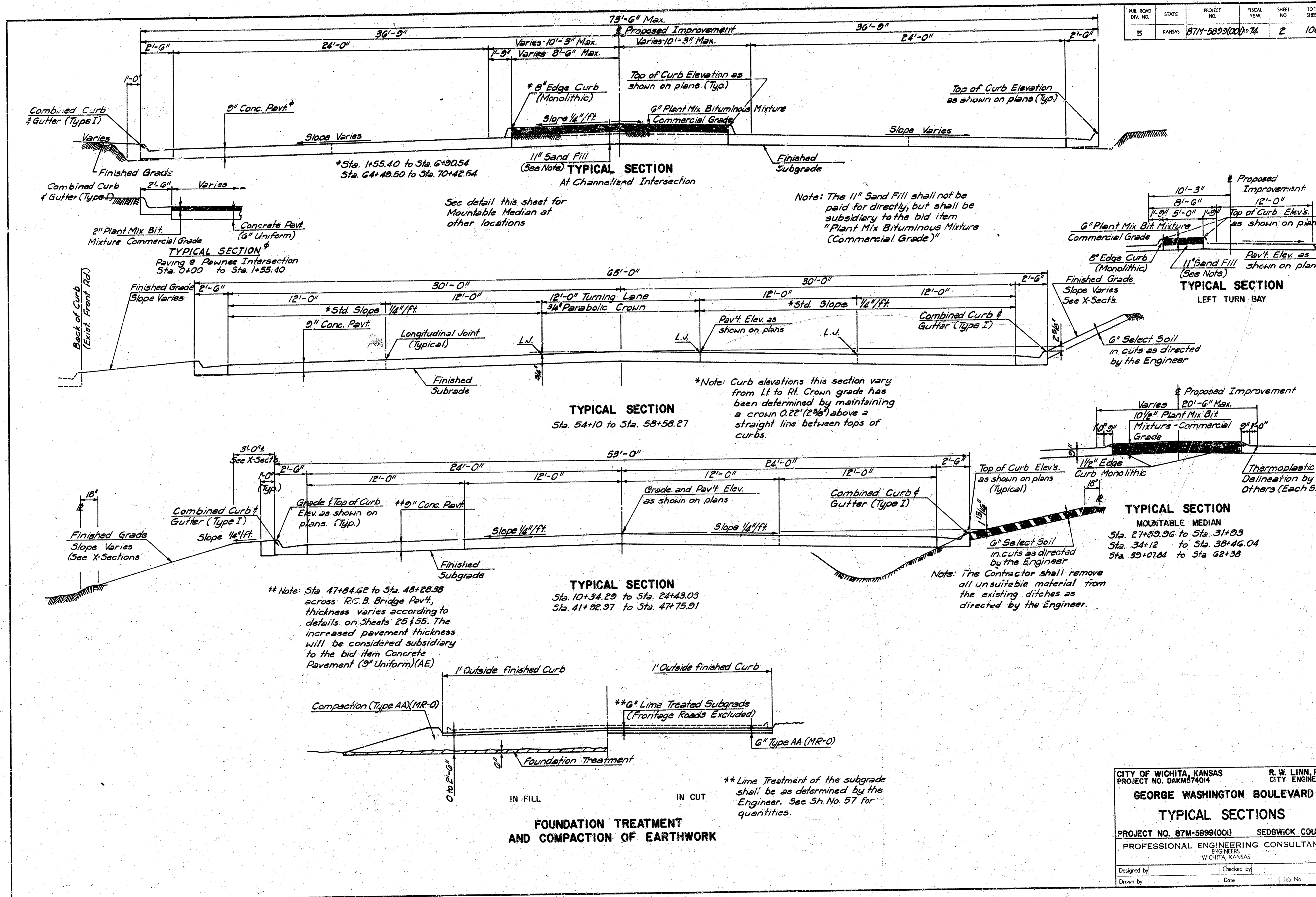
STATE HIGHWAY ENGINEER
STATE HIGHWAY COMMISSION OF KANSAS

APPROVED DATE

DIVISION ENGINEER
FEDERAL HIGHWAY ADMINISTRATION
DEPARTMENT OF TRANSPORTATION

See Note 7.7

PUB. ROAD DIST. NO.	STATE	PROJECT NO.	FISCAL YEAR	SHEET NO.	TOTAL SHEETS
15	KANSAS	87M-5899(00) 74		2	100



Note: The 11" Sand Fill shall not be paid for directly, but shall be subsidiary to the bid item "Plant Mix Bituminous Mixture (Commercial Grade)"

Note: Curb elevations this section vary from Lt. to Rt. Crown grade has been determined by maintaining a crown 0.22' (2 1/8") above a straight line between tops of curbs.

Note: Sta 47+84.62 to Sta. 48+28.38 across R.C.B. Bridge Pav't, thickness varies according to details on Sheets 25 & 55. The increased pavement thickness will be considered subsidiary to the bid item Concrete Pavement (9" Uniform) (AE)

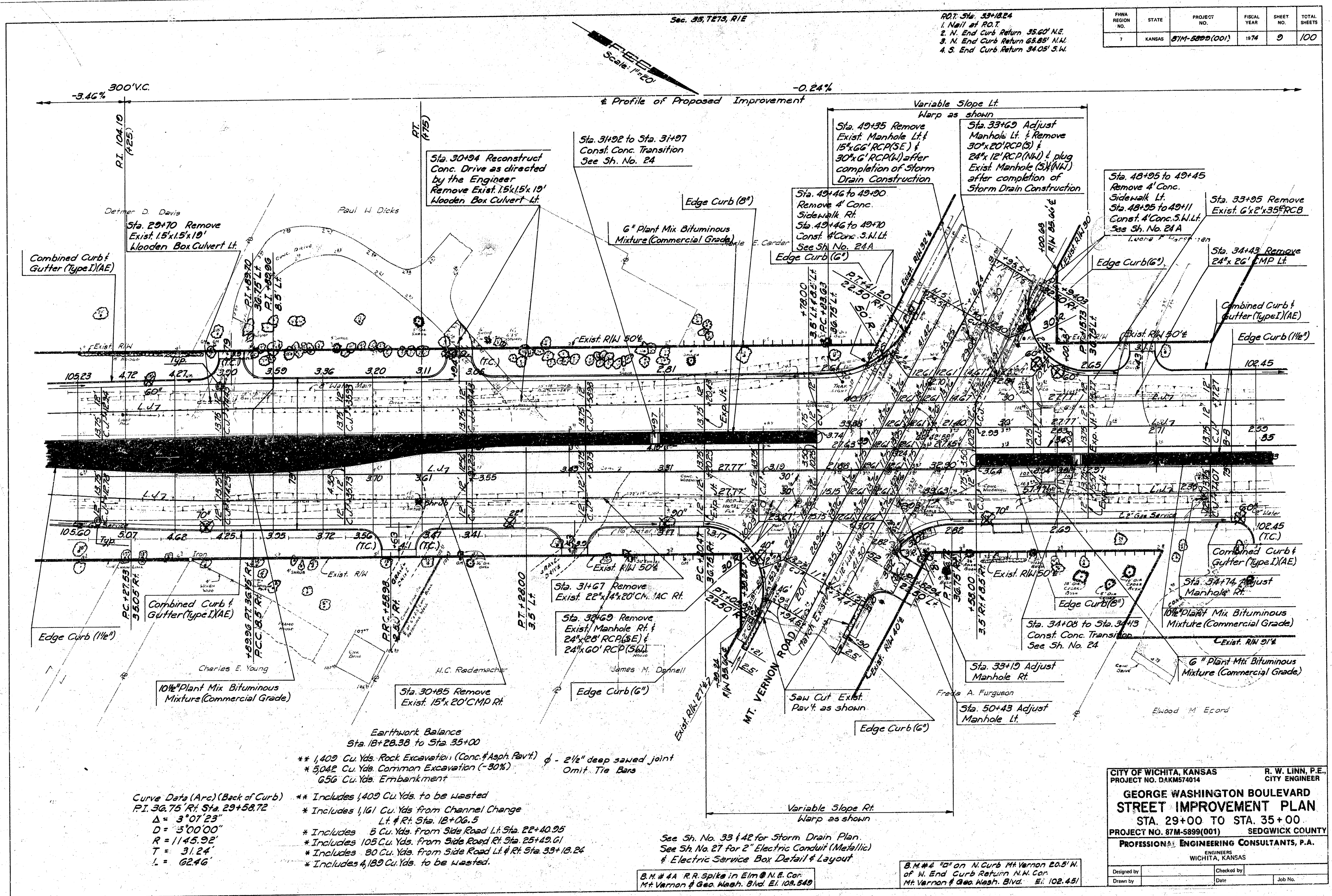
Note: The Contractor shall remove all unsuitable material from the existing ditches as directed by the Engineer.

**Lime Treatment of the subgrade shall be as determined by the Engineer. See Sh. No. 57 for quantities.

CITY OF WICHITA, KANSAS PROJECT NO. DAKM574014		R. W. LINN, P.E. CITY ENGINEER	
GEORGE WASHINGTON BOULEVARD			
TYPICAL SECTIONS			
PROJECT NO. 87M-5899(001)		SEDGWICK COUNTY	
PROFESSIONAL ENGINEERING CONSULTANTS WICHITA, KANSAS			
Designed by	Checked by		
Drawn by	Date	Job No.	

J gine Eex 26 5 9 9 9 5 Jewel

3 2



FYMA REGION NO.	STATE	PROJECT NO.	FISCAL YEAR	SHEET NO.	TOTAL SHEETS
7	KANSAS	87M-5899(001)	1974	9	100

CITY OF WICHITA, KANSAS
PROJECT NO. DAKM574014

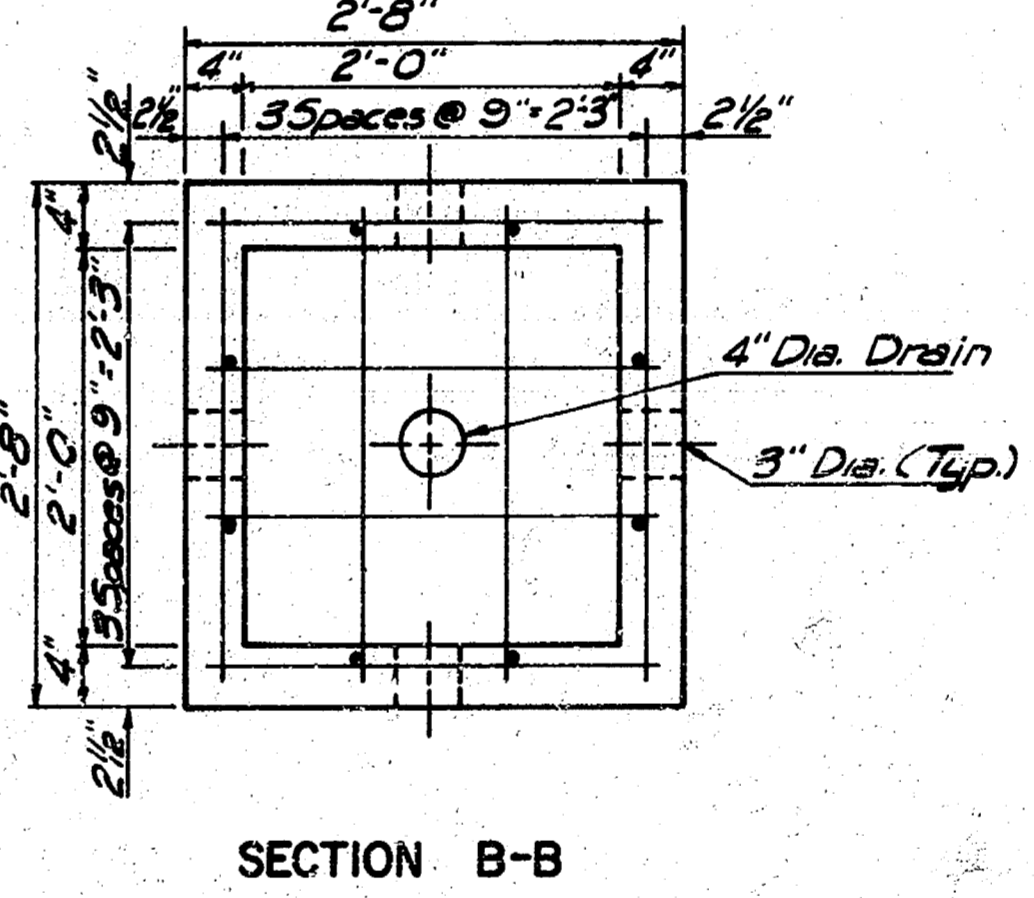
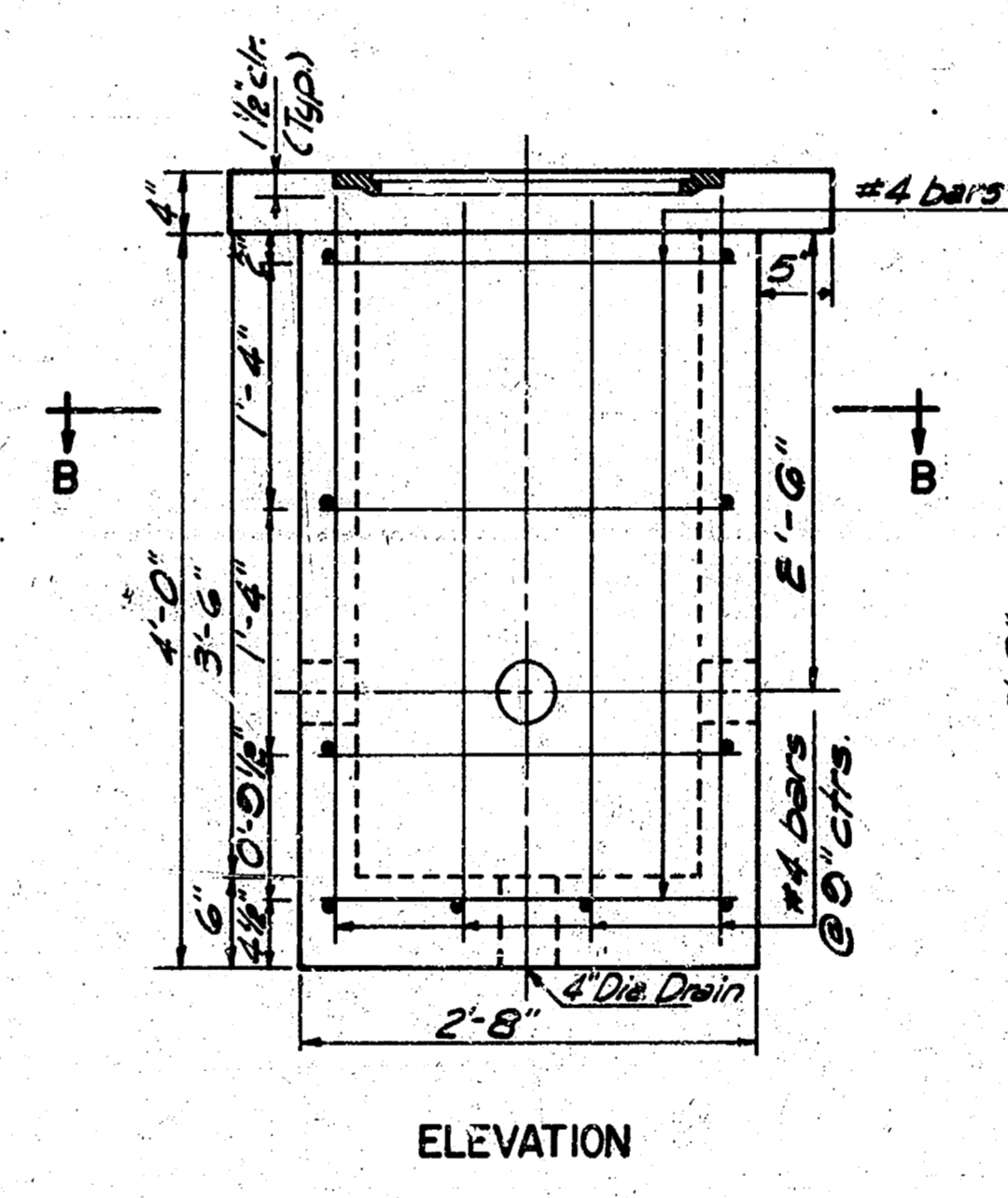
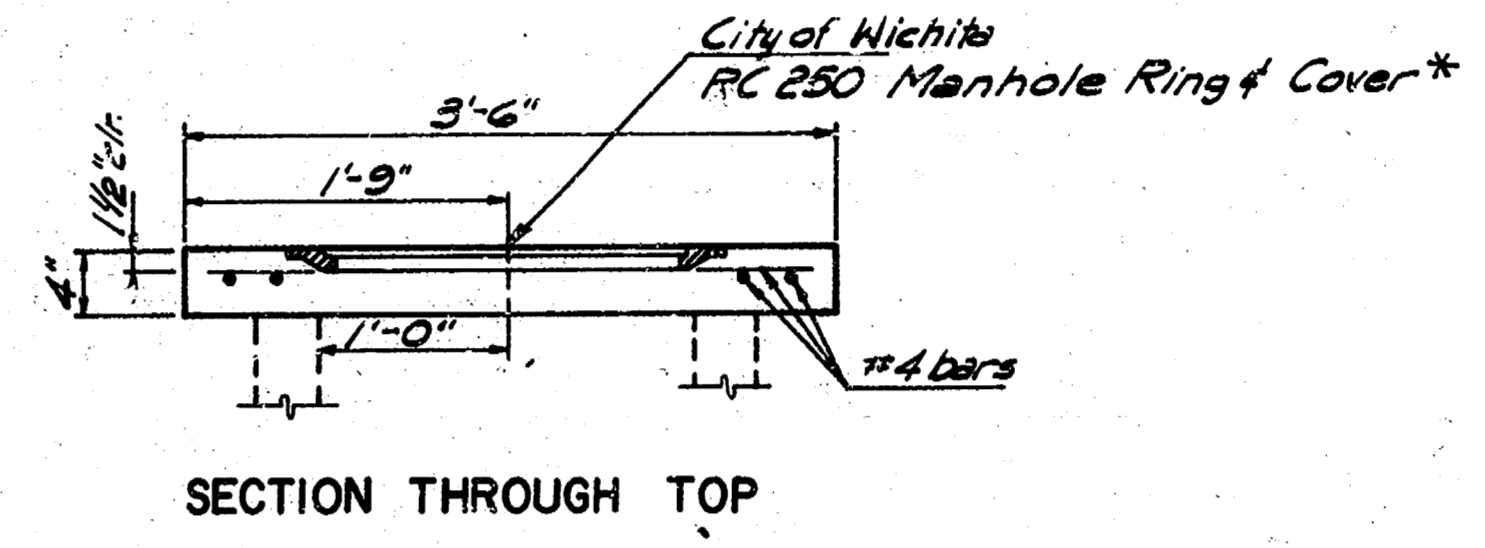
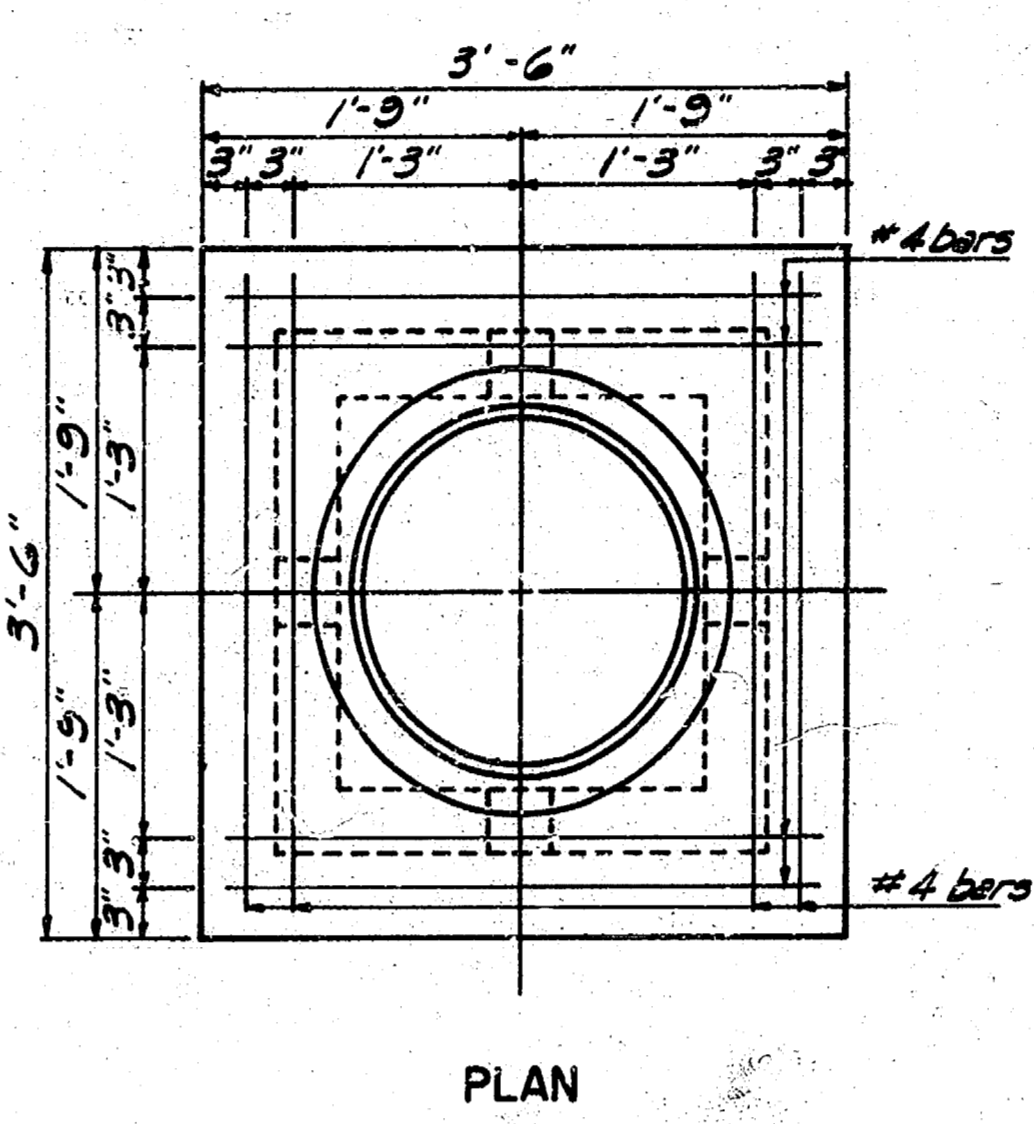
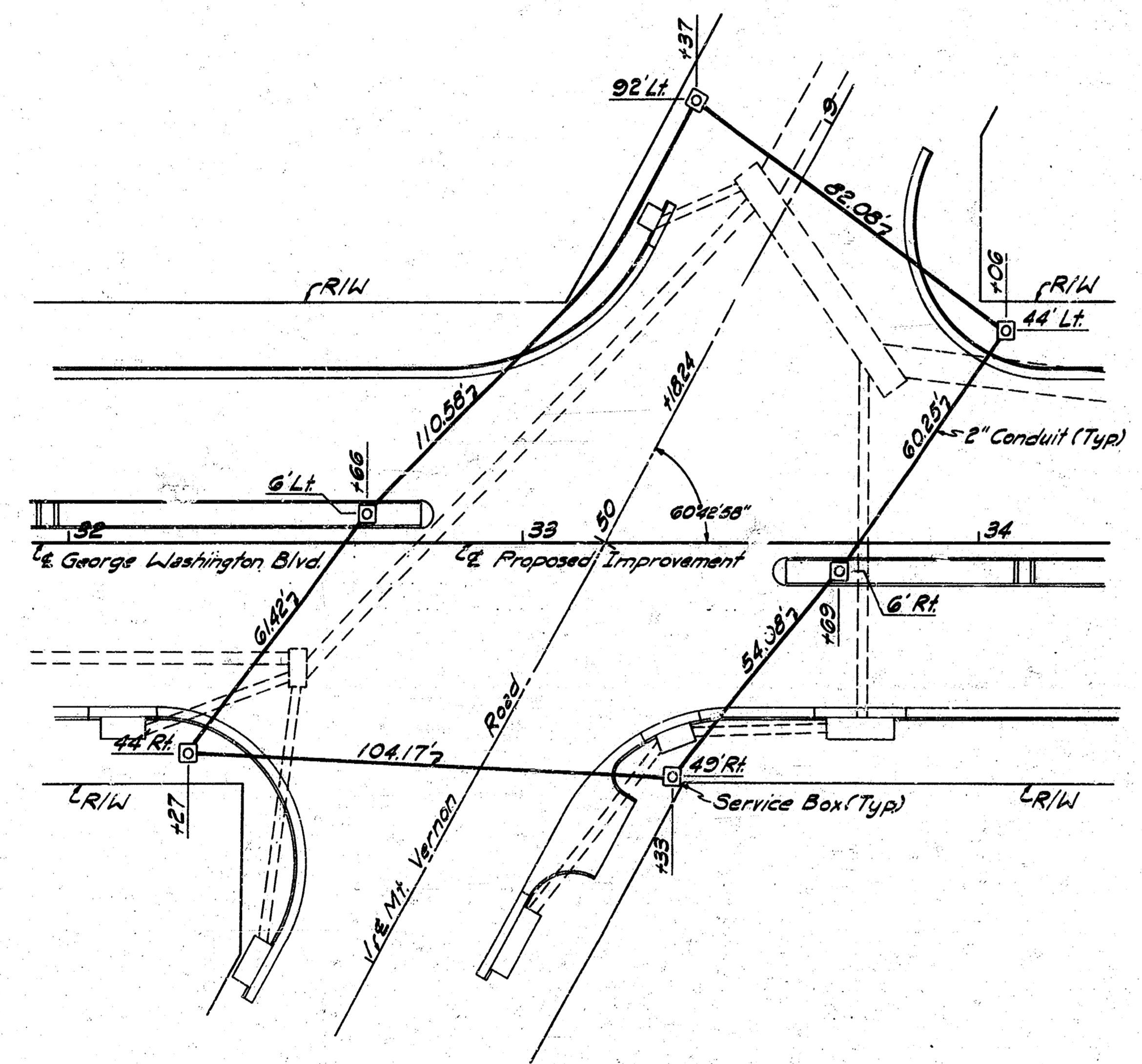
R. W. LINN, P.E.
CITY ENGINEER

GEORGE WASHINGTON BOULEVARD STREET IMPROVEMENT PLAN
STA. 29+00 TO STA. 35+00
PROJECT NO. 87M-5899(001) SEDGWICK COUNTY

PROFESSIONAL ENGINEERING CONSULTANTS, P.A.
ENGINEERS
WICHITA, KANSAS

Designed by _____
Checked by _____
Date _____
Job No. _____

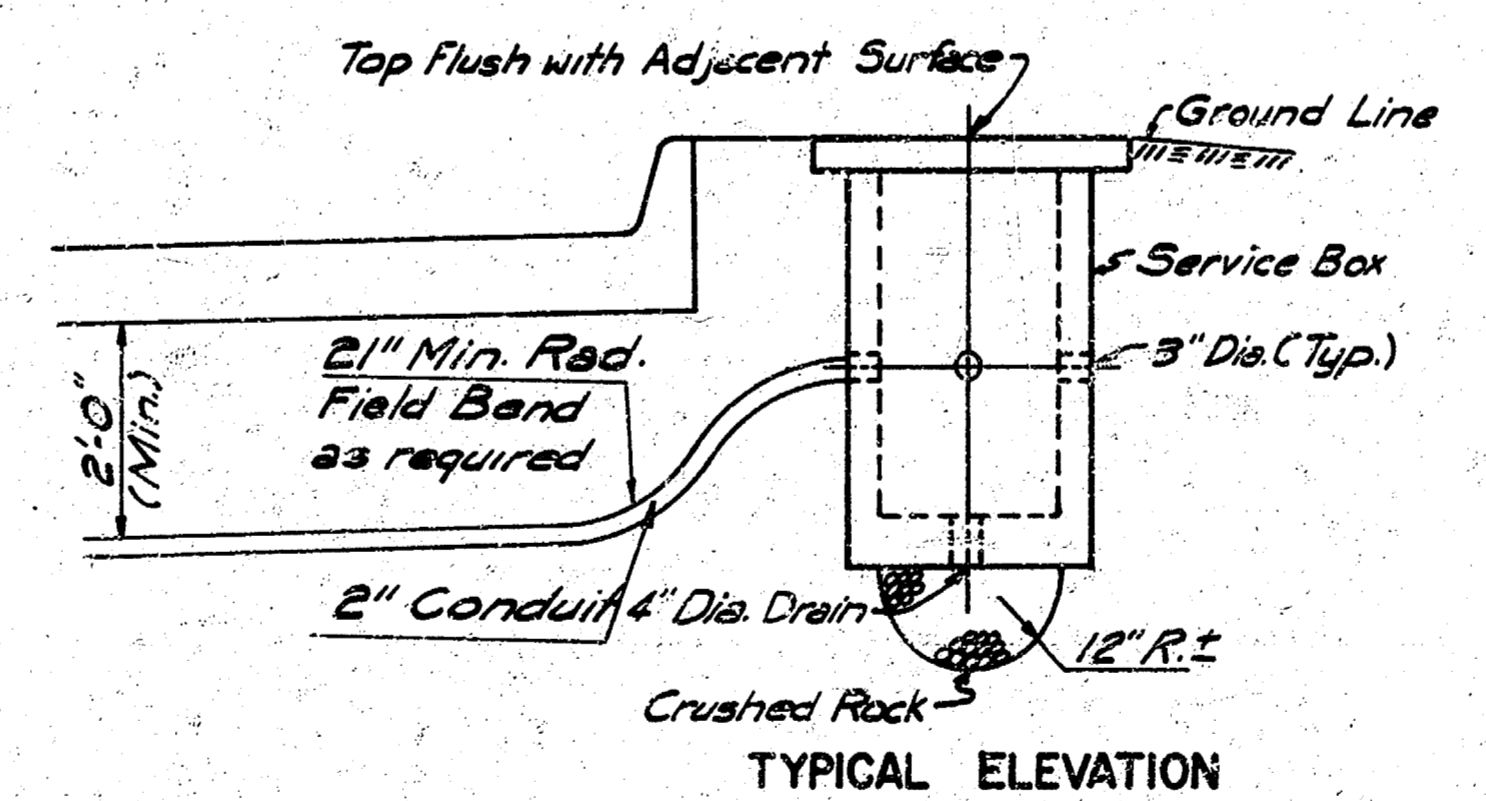
SCALE: 1"=20'



Quantities per Service Box	
Class A Concrete	0.65 Cu Yds
Reinforcing Steel	71 Lbs.
R.C. 250*	1 Each

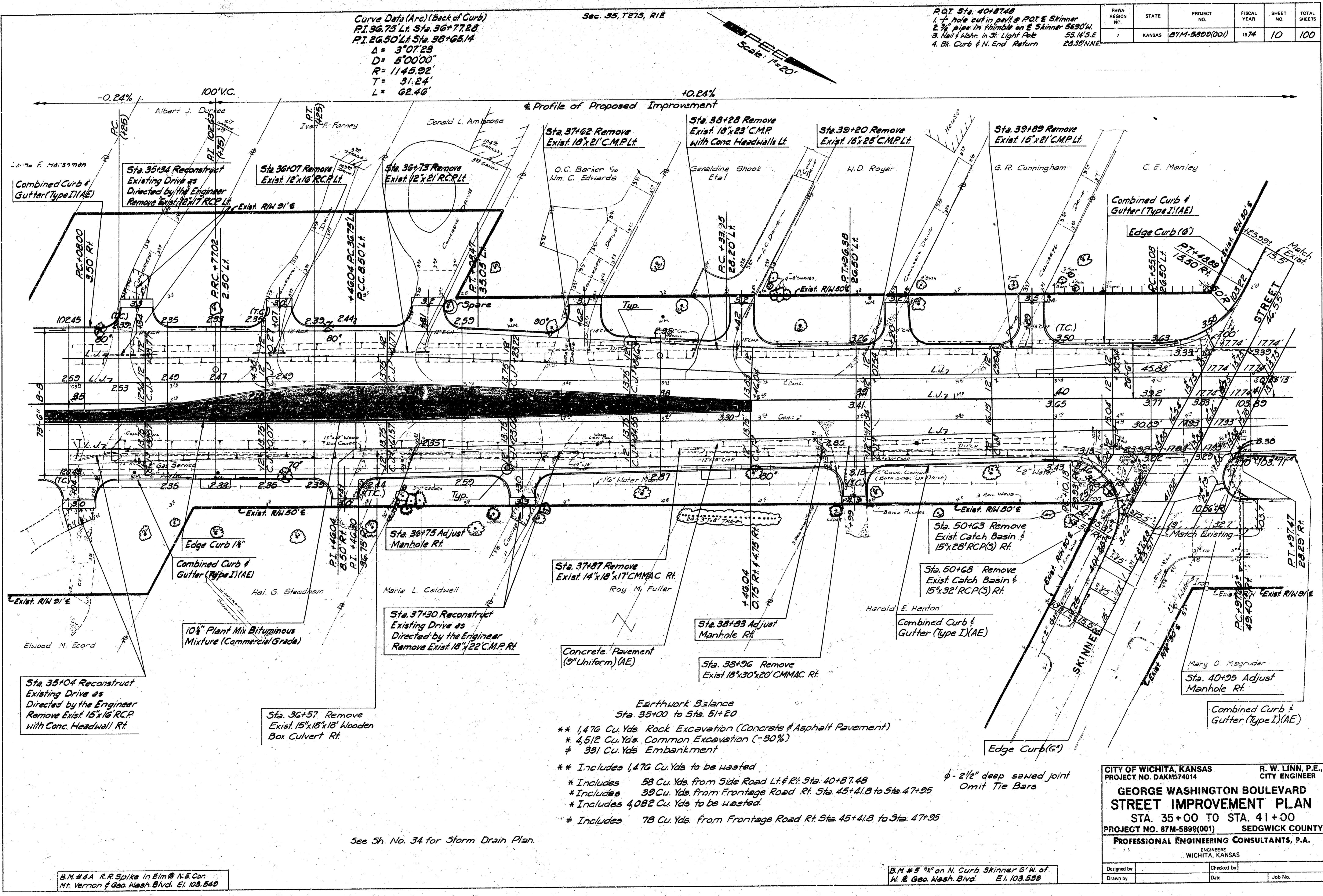
NOTES:
 A pre-cast service box with an open bottom will be accepted as an alternate, subject to the Approval of the Engineer.
 All items of work and material required to construct the service boxes shall be paid for under bid item "Electric Service Boxes"(Each).

*To be furnished by Traffic Dept., City of Wichita.



SERVICE BOX DETAILS

CITY OF WICHITA, KANSAS
 PROJECT NO. DAKM574014
**GEORGE WASHINGTON BOULEVARD
 ELECTRIC SVC. BOX DTLS.**
 PROJECT NO. 87M-5899(001) SEDGWICK COUNTY
 PROFESSIONAL ENGINEERING CONSULTANTS
 ENGINEERS
 WICHITA, KANSAS
 R. W. LINN, P.E.
 CITY ENGINEER



Curve Data (Arc) (Back of Curb)
 P.I. 36+73 Lt. Sta. 36+77.28
 P.I. 26+50 Lt. Sta. 36+68.14
 Δ = 3°07'23"
 D = 5'00'00"
 R = 1143.92'
 T = 31.24'
 L = 62.46'

Sec. 35, T21S, R1E

- P.O.T. Sta. 40+87.48
 1. 4" hole cut in back of POT & Skinner
 2. 3/4" pipe in chimney on E Skinner 5690W.
 3. Nail & Niche in St. Light Pole 55.14'S.E.
 4. Bl. Curb & N. End Return 28.35'N.W.E.

FINA REGION NO.	STATE	PROJECT NO.	FISCAL YEAR	SHEET NO.	TOTAL SHEETS
7	KANSAS	87M-5899(001)	1974	10	100



Profile of Proposed Improvement

0.24% 100' V.C. 40.24%

- Earthwork Balance
 Sta. 35+00 to Sta. 51+20
 ** 1,476 Cu. Yds. Rock Excavation (Concrete & Asphalt Pavement)
 * 4,512 Cu. Yds. Common Excavation (-30%)
 † 391 Cu. Yds. Embankment
 ** Includes 1,476 Cu. Yds. to be wasted
 * Includes 58 Cu. Yds. from Side Road Lt. # Rt. Sta. 40+87.48
 * Includes 39 Cu. Yds. from Frontage Road Rt. Sta. 45+41.8 to Sta. 47+95
 * Includes 4,082 Cu. Yds. to be wasted
 † Includes 78 Cu. Yds. from Frontage Road Rt. Sta. 45+41.8 to Sta. 47+25

See Sh. No. 34 for Storm Drain Plan.

B.M. #44 R.R. Spike in Elm @ N.E. Cor. Mt. Vernon & Geo. Wash. Blvd. El. 103.849

B.M. #5 "X" on N. Curb Skinner 6" W. of Al. & Geo. Wash. Blvd. El. 103.538

CITY OF WICHITA, KANSAS
 PROJECT NO. DAKH574614
 R. W. LINN, P.E.
 CITY ENGINEER
GEORGE WASHINGTON BOULEVARD STREET IMPROVEMENT PLAN
 STA. 35+00 TO STA. 41+00
 PROJECT NO. 87M-5899(001) SEDGWICK COUNTY
PROFESSIONAL ENGINEERING CONSULTANTS, P.A.
 ENGINEERS WICHITA, KANSAS

Designed by	Checked by
Drawn by	Date
	Job No.

BBN#44

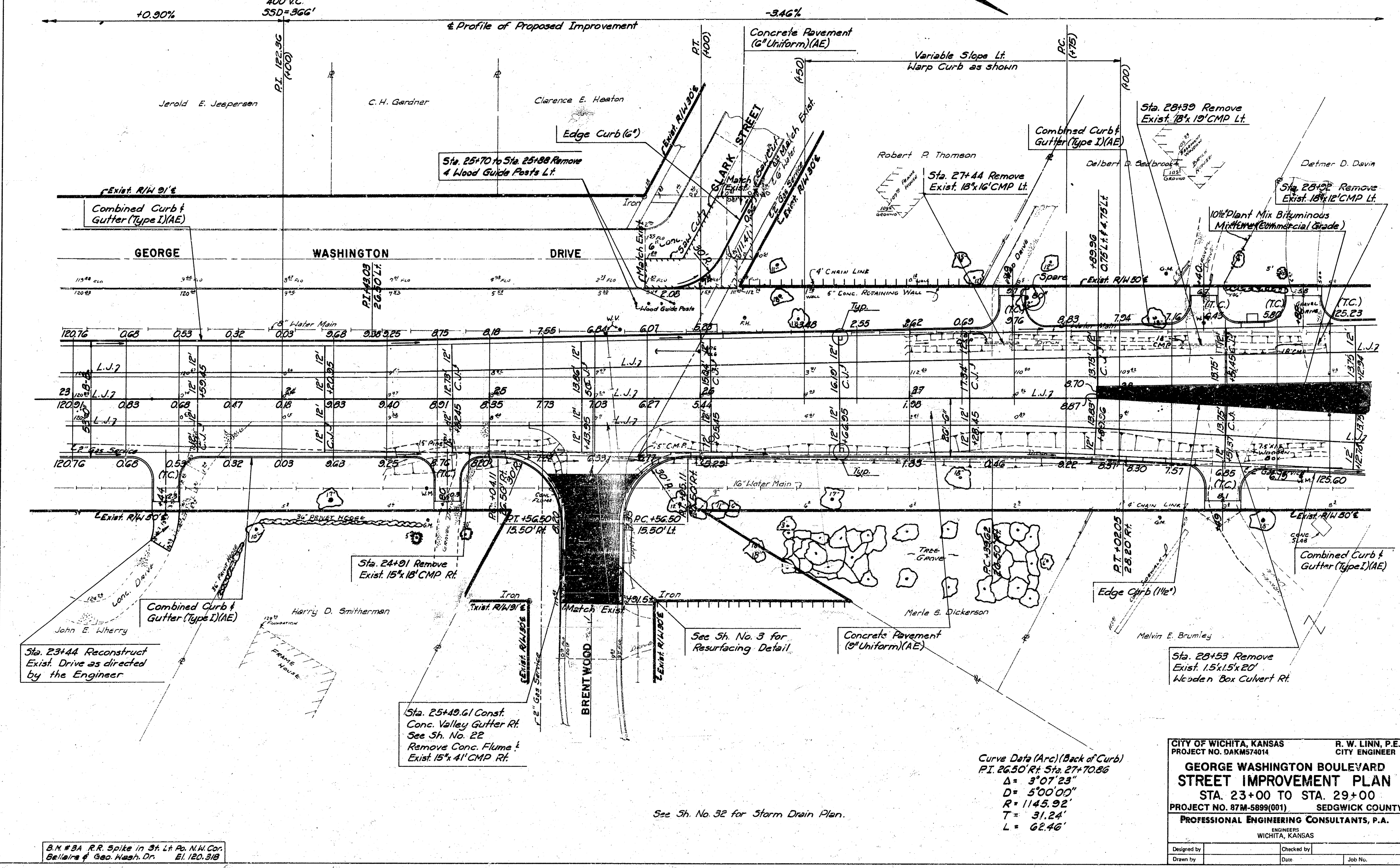
330

10

R.O.T. Sta 23+37.19
 1. 3/4" Iron in pavement
 2. Center street light pole 680'S.
 3. D.M. @ N.W. cor. Belleaire &
 George Wash. Drive 96.83'S.W.
 4. Back curb & side George Wash.
 Drive 90° to E 49.88' W.S.W.

Sec. 38, T27S, R1E

FHWA REGION NO.	STATE	PROJECT NO.	FISCAL YEAR	SHEET NO.	TOTAL SHEETS
7	KANSAS	87M-5899(001)	1974	8	100



Curve Data (Arc) (Back of Curb)
 P.I. 26.50' Rt. Sta. 27+70.86
 $\Delta = 3^{\circ}07'23''$
 $D = 5^{\circ}00'00''$
 $R = 1145.92'$
 $T = 31.24'$
 $L = 62.46'$

CITY OF WICHITA, KANSAS
 PROJECT NO. DAKM574014
GEORGE WASHINGTON BOULEVARD STREET IMPROVEMENT PLAN
 STA. 23+00 TO STA. 29+00
 PROJECT NO. 87M-5899(001) SEDGWICK COUNTY
PROFESSIONAL ENGINEERING CONSULTANTS, P.A.
 ENGINEERS
 WICHITA, KANSAS

R. W. LINN, P.E.
 CITY ENGINEER

Designed by	Checked by
Drawn by	Date
	Job No.

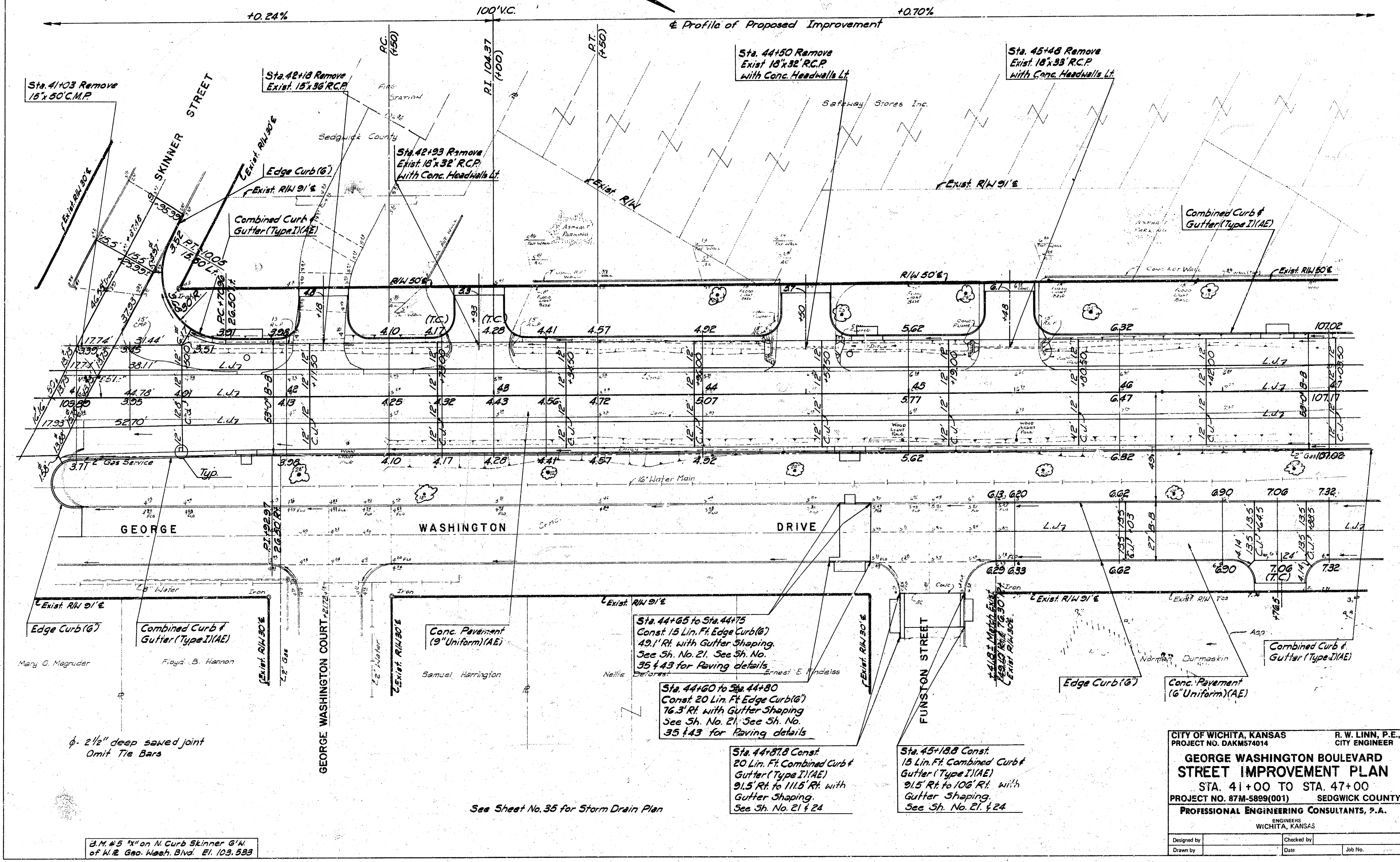
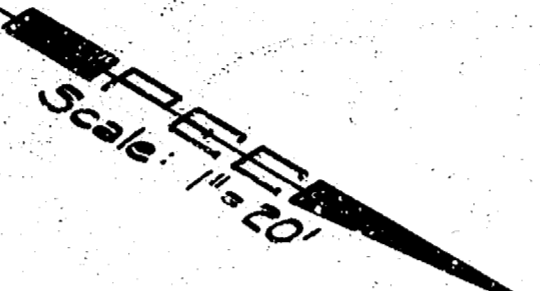
2" x 3/4" R.R. Spike in 3" Lt. Po. N.W. Cor. Belleaire & Geo. Wash. Dr. El. 120.518

See Sh. No. 32 for Storm Drain Plan.

Sec. 35, T21S, R1E

ROT Sta. 46+20.00
 1. Chn. 1" at ROT
 2. S. End 18" RCP Ent. Pipe 35.60' MIN.
 3. S. E. Cor. Base of Prop. Lt. 54.08' AL.
 4. N.E. Cor. Abgd. of Ent. Street. 53.11' S.

FHWA REGION NO.	STATE	PROJECT NO.	FISCAL YEAR	SHEET NO.	TOTAL SHEETS
7	KANSAS	87M-5899(001)	1974	11	100



Sta. 41+03 Remove
18" 50' C.M.P.

Sta. 42+18 Remove
Exist. 18" 36' R.C.P.

Sta. 42+23 Remove
Exist. 18" 36' R.C.P.
with Conc. Headwalls Lt.

Sta. 44+30 Remove
Exist. 18" 36' R.C.P.
with Conc. Headwalls Lt.

Sta. 45+46 Remove
Exist. 18" 36' R.C.P.
with Conc. Headwalls Lt.

Sta. 44+65 to Sta. 44+75
Const. 15 Lin. Ft. Edge Curb (6")
49' RH with Gutter Shaping.
See Sh. No. 21. See Sh. No.
35 & 43 for Raving details.

Sta. 44+60 to Sta. 44+80
Const. 20 Lin. Ft. Edge Curb (6")
76.3' RH with Gutter Shaping.
See Sh. No. 21. See Sh. No.
35 & 43 for Raving details.

Sta. 44+37.8 Const.
20 Lin. Ft. Combined Curb &
Gutter (Type I) (AE)
91.5' RH to 111.5' RH with
Gutter Shaping.
See Sh. No. 21 & 24.

Sta. 45+18.8 Const.
15 Lin. Ft. Combined Curb &
Gutter (Type I) (AE)
91.5' RH to 106' RH with
Gutter Shaping.
See Sh. No. 21 & 24.

φ. 2 1/2" deep sawed joint
Omit Tie Bars

See Sheet No. 35 for Storm Drain Plan

B.M. #5 "X" on N. Curb Skinner 6" W.
of W. E. Geo. Wash. Blvd. El. 103.583

CITY OF WICHITA, KANSAS
 PROJECT NO. DAKM574014
 R. W. LINN, P.E.,
 CITY ENGINEER

**GEORGE WASHINGTON BOULEVARD
 STREET IMPROVEMENT PLAN**
 STA. 41+00 TO STA. 47+00
 PROJECT NO. 87M-5899(001) SEDGWICK COUNTY
 PROFESSIONAL ENGINEERING CONSULTANTS, P.A.
 WICHITA, KANSAS

Designed by _____ Checked by _____
 Drawn by _____ Date _____ Job No. _____