

B.M. 106.55 E in Everett & Thomas Blk of NW 1/4 NW 1/4 of Glen & Irving

Stationing on E

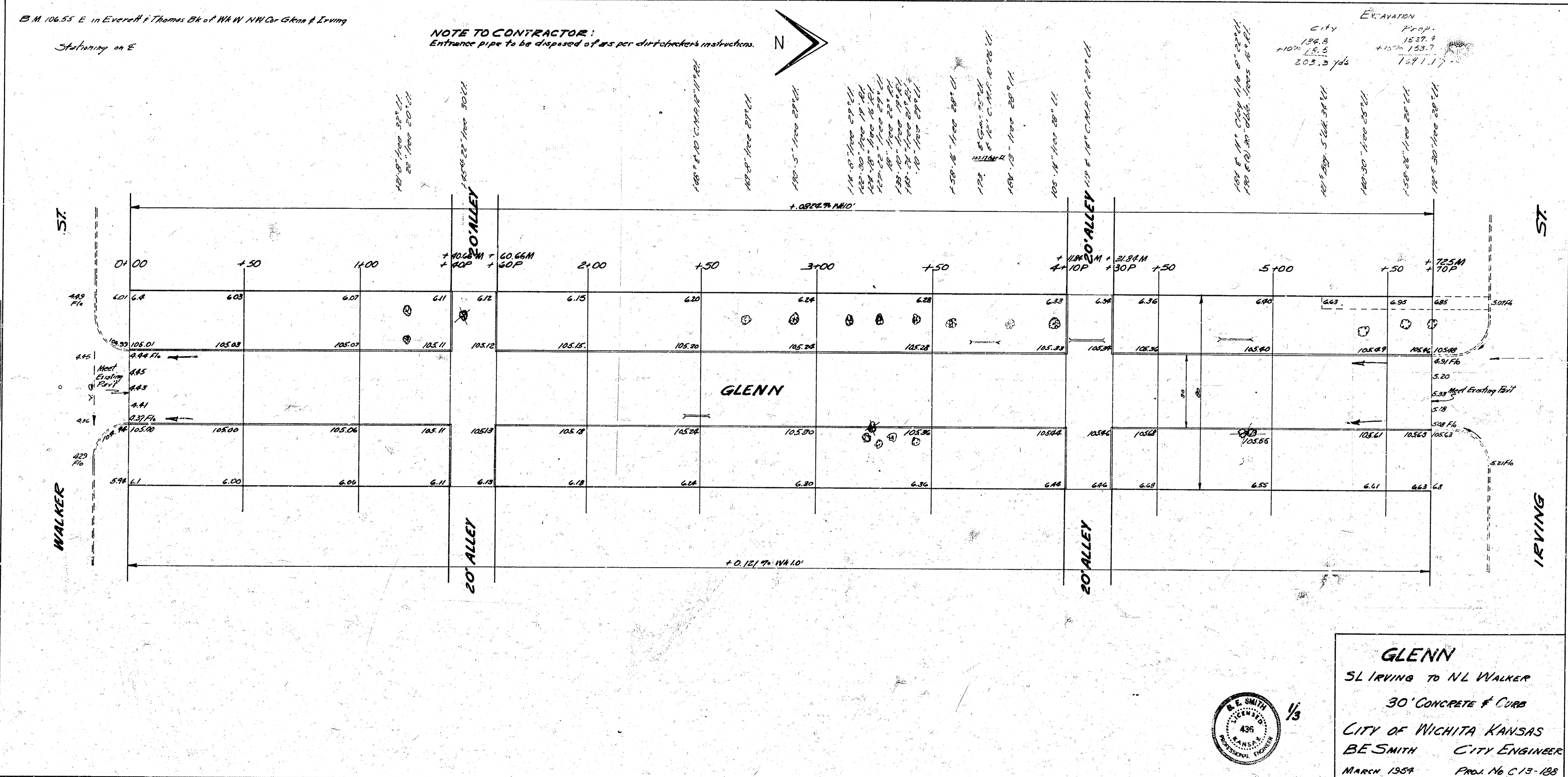
**NOTE TO CONTRACTOR:**  
Entrance pipe to be disposed of as per dirt doctor's instructions.



Excavation

CITY	124.8	1537.9
100%	15.5	153.7
	203.3	1791.7

Surveyed by  
B.K. 2  
E.M. 23  
D.K. 23  
Checked by



180° 18' 11" from 20' ALLEY  
20' from 20' ALLEY

180° 18' 11" from 20' ALLEY  
20' from 20' ALLEY

180° 18' 11" from 20' ALLEY  
20' from 20' ALLEY

180° 18' 11" from 20' ALLEY  
20' from 20' ALLEY

180° 18' 11" from 20' ALLEY  
20' from 20' ALLEY

180° 18' 11" from 20' ALLEY  
20' from 20' ALLEY

180° 18' 11" from 20' ALLEY  
20' from 20' ALLEY

180° 18' 11" from 20' ALLEY  
20' from 20' ALLEY

180° 18' 11" from 20' ALLEY  
20' from 20' ALLEY

180° 18' 11" from 20' ALLEY  
20' from 20' ALLEY

180° 18' 11" from 20' ALLEY  
20' from 20' ALLEY

180° 18' 11" from 20' ALLEY  
20' from 20' ALLEY

180° 18' 11" from 20' ALLEY  
20' from 20' ALLEY

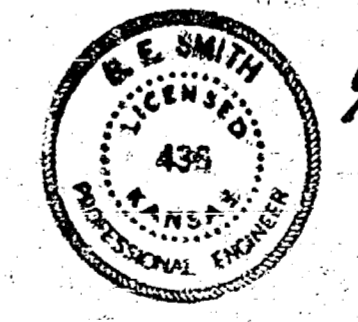
180° 18' 11" from 20' ALLEY  
20' from 20' ALLEY

180° 18' 11" from 20' ALLEY  
20' from 20' ALLEY

180° 18' 11" from 20' ALLEY  
20' from 20' ALLEY

180° 18' 11" from 20' ALLEY  
20' from 20' ALLEY

**GLENN**  
31 IRVING TO NL WALKER  
30' CONCRETE & CURB  
CITY OF WICHITA KANSAS  
B.E. SMITH CITY ENGINEER  
MARCH 1954 PROJ. No. C-13-128



1/3