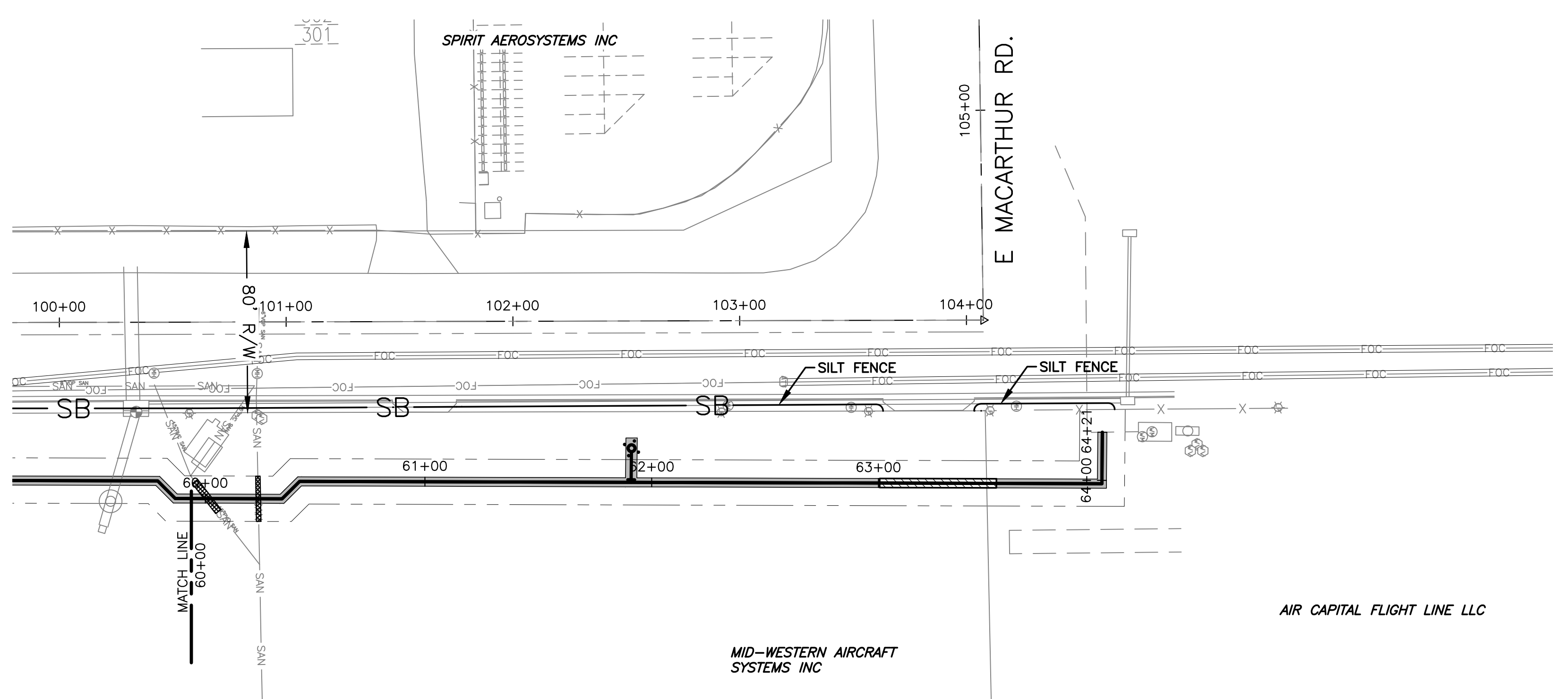
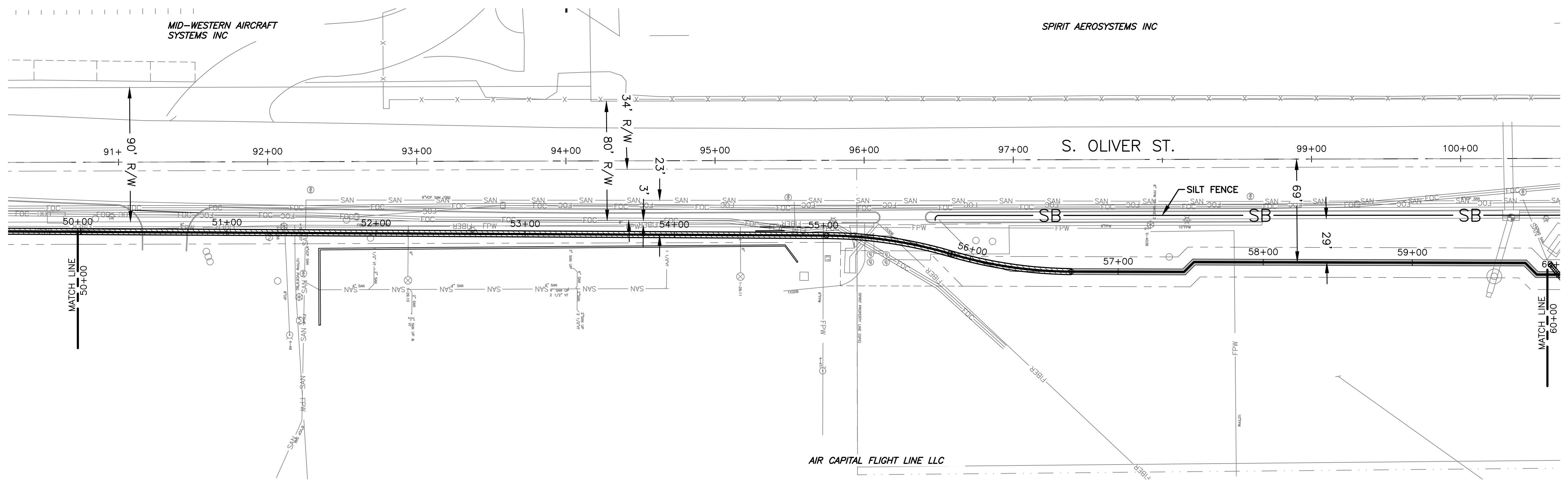


PLOTTED: Monday, June 15, 2025 @ 03:15PM

J:\PROJECTS\2023\12\10\10857_ACFL_SPIRIT_MILITARY\00_210857_CADD\SHETS\06-EROSION CONTROL.DWG



LEGEND

- PROP. WATER LINE
- CW — CHILLED WATER
- IW — INDUSTRIAL WATER
- IRRG — IRRIGATION
- SS — SANITARY SEWER
- SWS — STORM SEWER
- TELCO — TELCO
- 12KV — 12 KV
- G — GAS
- 480 V — 480 V
- FOC — FIBER OPTIC CABLE
- FPW — FIRE PROTECTION WATER
- X — FENCE
- SB — SILT BARRIER
- ⊘ — INLET PROTECT

NOTE:
SILT BARRIER MAY BE SILT FENCE
OR STRAW WATTLE WHERE
NECESSARY



WATER EXTENSION PLANS FOR
ACFL WATER EXTENSION
WICHITA, KS

EROSION CONTROL SHEET 3

PROJECT NO.	210857	
SCALE	1"=40'	
DRAWN	DESIGNED	CHECKED
KM	KM	DK
NO.	REVISION	DATE
01	ISSUED FOR CONSTRUCTION	06/13/25

©2025 MKEC ENGINEERING, INC. ALL RIGHTS RESERVED WWW.MKEC.COM. THESE DRAWINGS AND THEIR CONTENTS, INCLUDING, BUT NOT LIMITED TO, ALL CONCEPTS, DESIGNS, & IDEAS ARE THE EXCLUSIVE PROPERTY OF MKEC ENGINEERING, INC. (MKEC), AND MAY NOT BE USED OR REPRODUCED IN ANY WAY WITHOUT THE EXPRESS CONSENT OF MKEC.