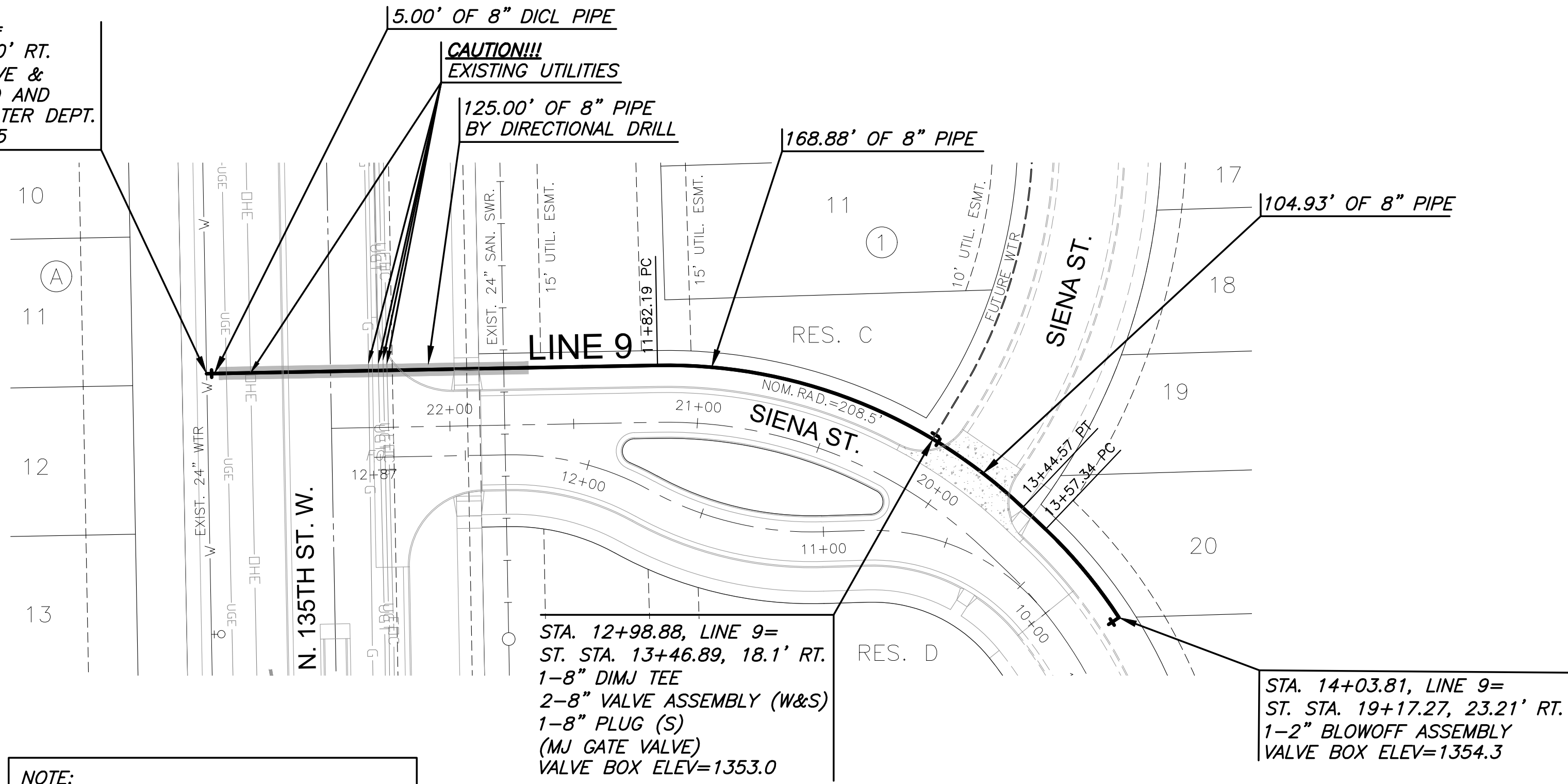
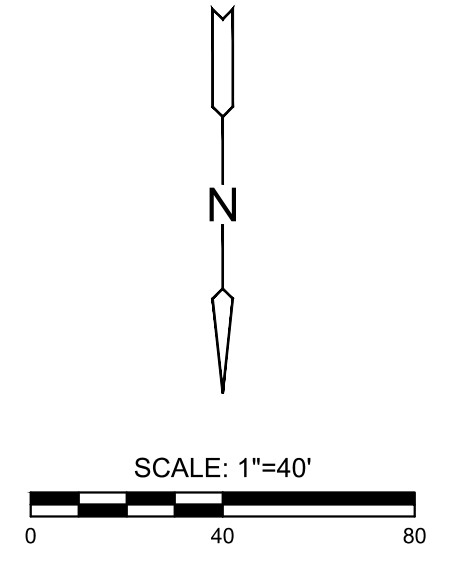
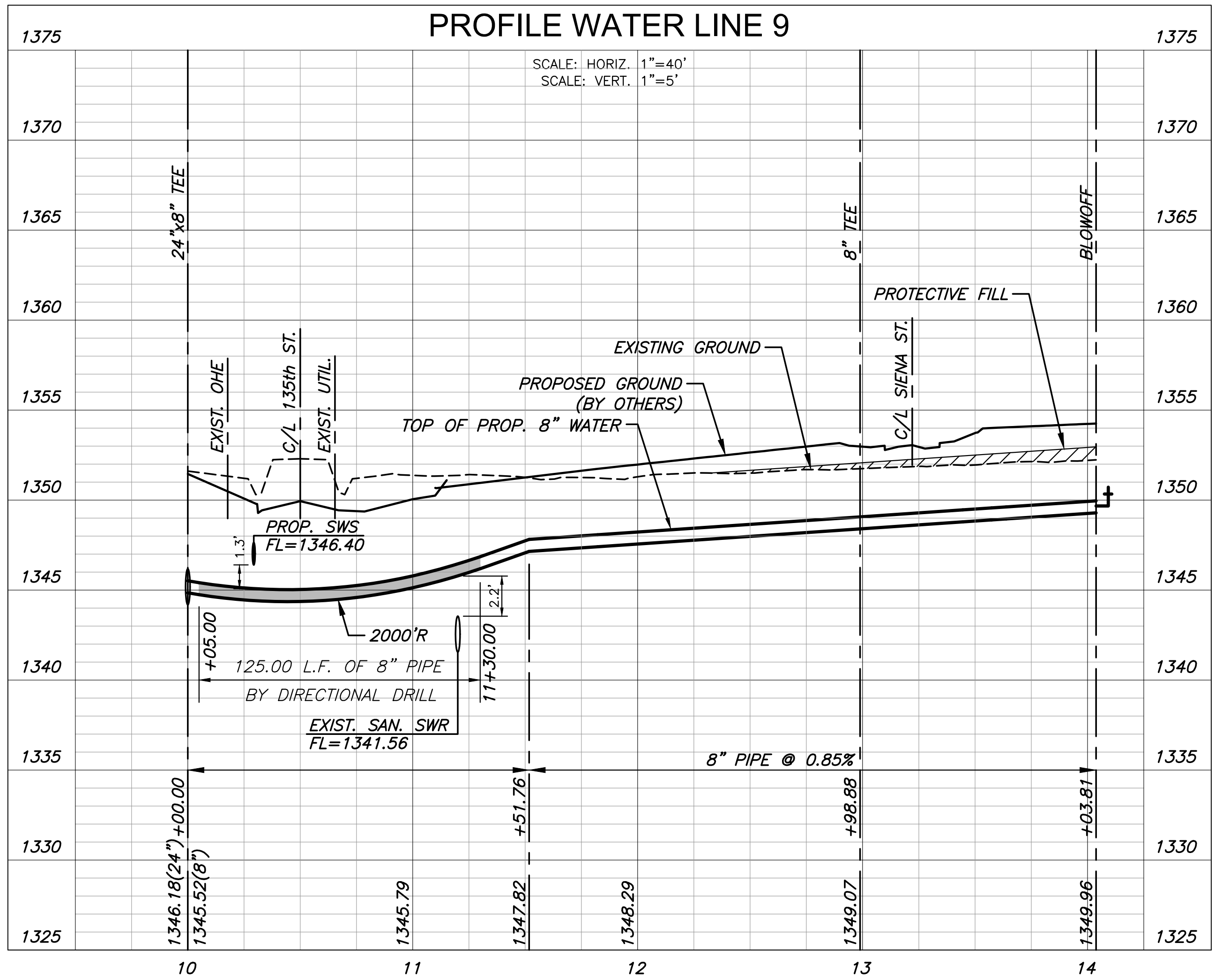


J:\PROJECTS\2025\20250110\2025_PERFECTION_JACOBS_135TH AND CENTRAL\00_2025R6_CAD\SHOTS\05_CIVIL\WTR\SECOND ADDITION\2025R6_C-113-W01.DWG
 ©2025 MKEC ENGINEERING, INC. ALL RIGHTS RESERVED WWW.MKEC.COM. THESE DRAWINGS AND THEIR CONTENTS, INCLUDING, BUT NOT LIMITED TO, ALL CONCEPTS, DESIGNS, & DETAILS ARE THE EXCLUSIVE PROPERTY OF MKEC ENGINEERING, INC. (MKEC), AND MAY NOT BE USED OR REPRODUCED IN ANY WAY WITHOUT THE EXPRESS CONSENT OF MKEC.

STA. 10+00.00, LINE 9=
 ST. STA. 22+97.88, 23.0' RT.
 1-24"x8" TAPPING SLEEVE &
 VALVE TO BE FURNISHED AND
 INSTALLED BY C.O.W. WATER DEPT.
 VALVE BOX ELEV.=1351.5



PLAN WATER LINE 9
PROFILE WATER LINE 9



WATER DISTRIBUTION PLANS FOR
COURTYARDS AT JACOBS FARM 2ND
 PHASE 1

WATER LINE 9		
PROJECT NO.	448-2025-014383	
SCALE	1" = 40'	
DRAWN	DESIGNED	CHECKED
JWC	DFL	SPE
NO.	REVISION	DATE
0	ISSUED FOR CONSTRUCTION	08/18/2025
SHEET NO. C-113-W01		
13 OF 28		