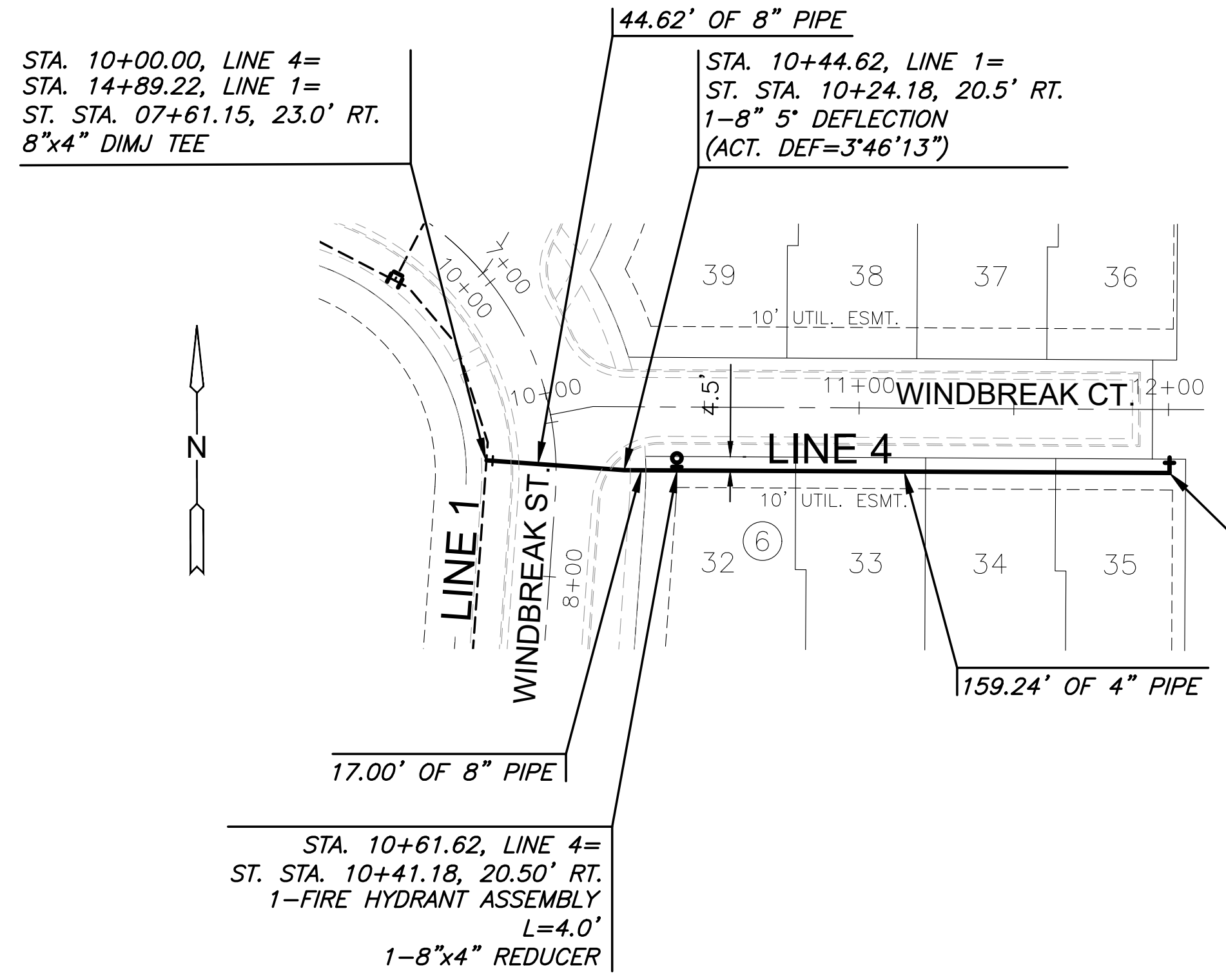


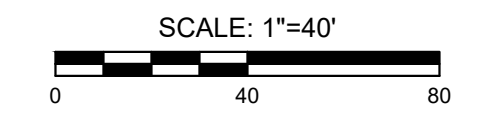
J:\PROJECTS\2025\20250110\2025_PHASE6\REFLECTION_JACOBS\15TH AND CENTRAL\00_220298_CAD\SH1505\CIVIL\WTRSECOND\ADDITION\PH6\220298_C-104-W06.DWG
 PLOTTED: Tuesday, August 19, 2025 @ 10:24AM
 ©2025 MKEC ENGINEERING, INC. ALL RIGHTS RESERVED WWW.MKEC.COM. THESE DRAWINGS AND THEIR CONTENTS, INCLUDING, BUT NOT LIMITED TO, ALL CONCEPTS, DESIGNS & DETAILS ARE THE EXCLUSIVE PROPERTY OF MKEC ENGINEERING, INC. (MKEC) AND MAY NOT BE USED OR REPRODUCED IN ANY WAY WITHOUT THE EXPRESS CONSENT OF MKEC.



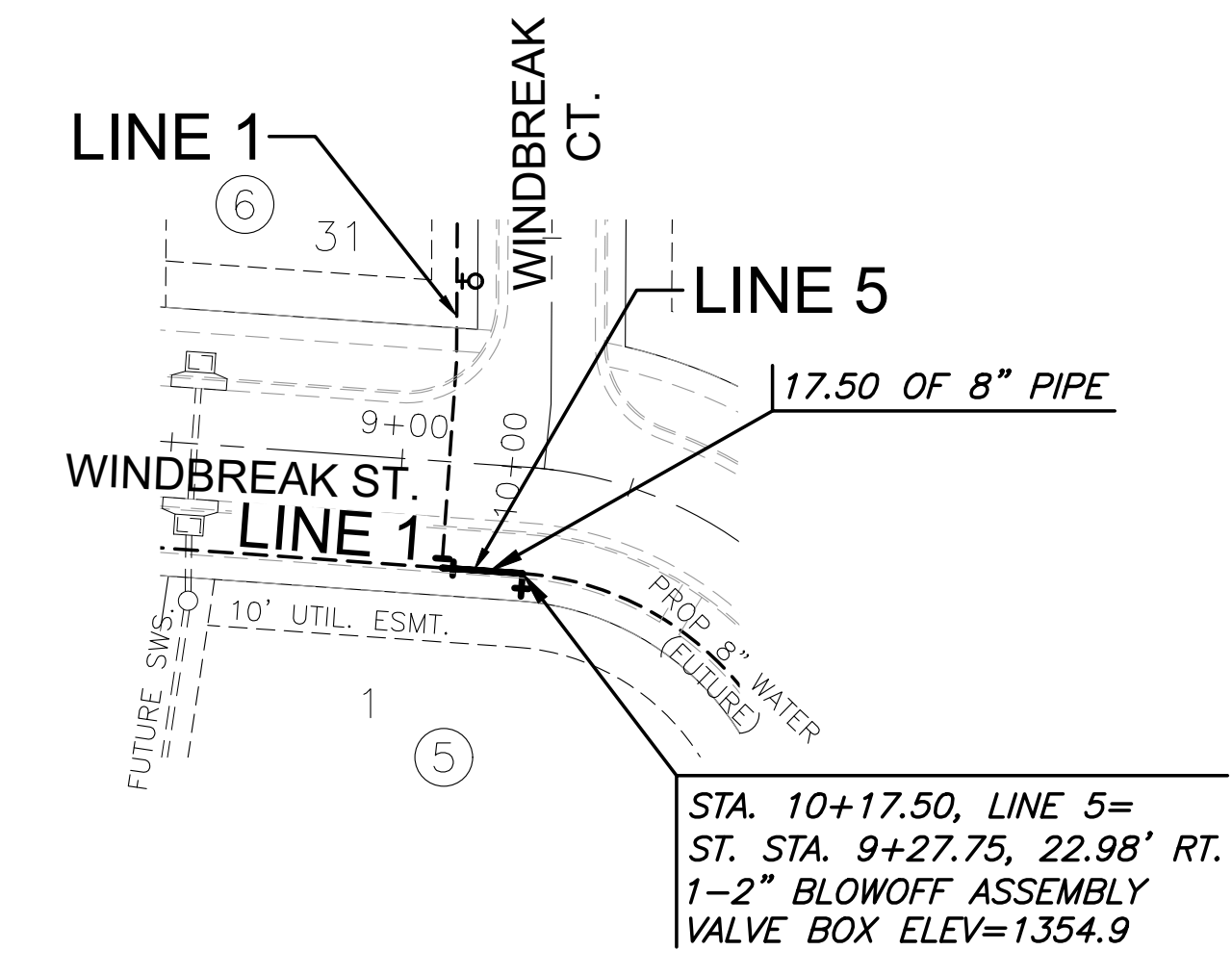
STA. 10+00.00, LINE 4=
 STA. 14+89.22, LINE 1=
 ST. STA. 07+61.15, 23.0' RT.
 8"x4" DIMJ TEE

STA. 10+44.62, LINE 1=
 ST. STA. 10+24.18, 20.5' RT.
 1-8" 5' DEFLECTION
 (ACT. DEF=3'46'13")

STA. 12+20.86, LINE 4=
 ST. STA. 12+00.42, 20.5' RT.
 1-2" BLOWOFF ASSEMBLY
 VALVE BOX ELEV=1352.9

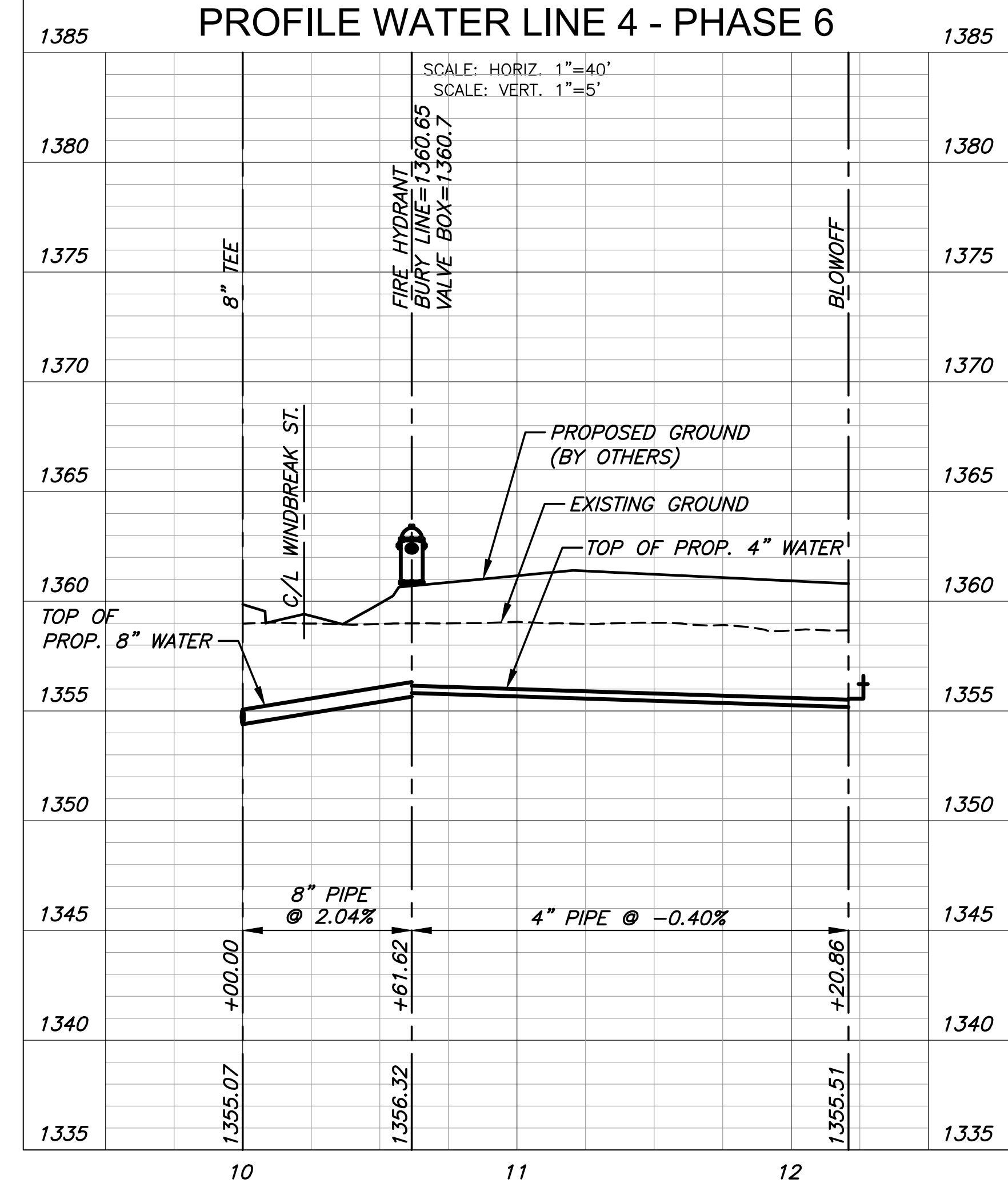


NOTE:
 CONTRACTOR TO VERIFY LOCATION,
 PIPE TYPE, AND ELEVATION OF EXISTING
 WATER LINE PRIOR TO CONSTRUCTION.

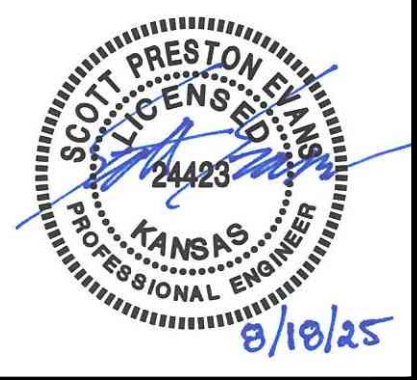
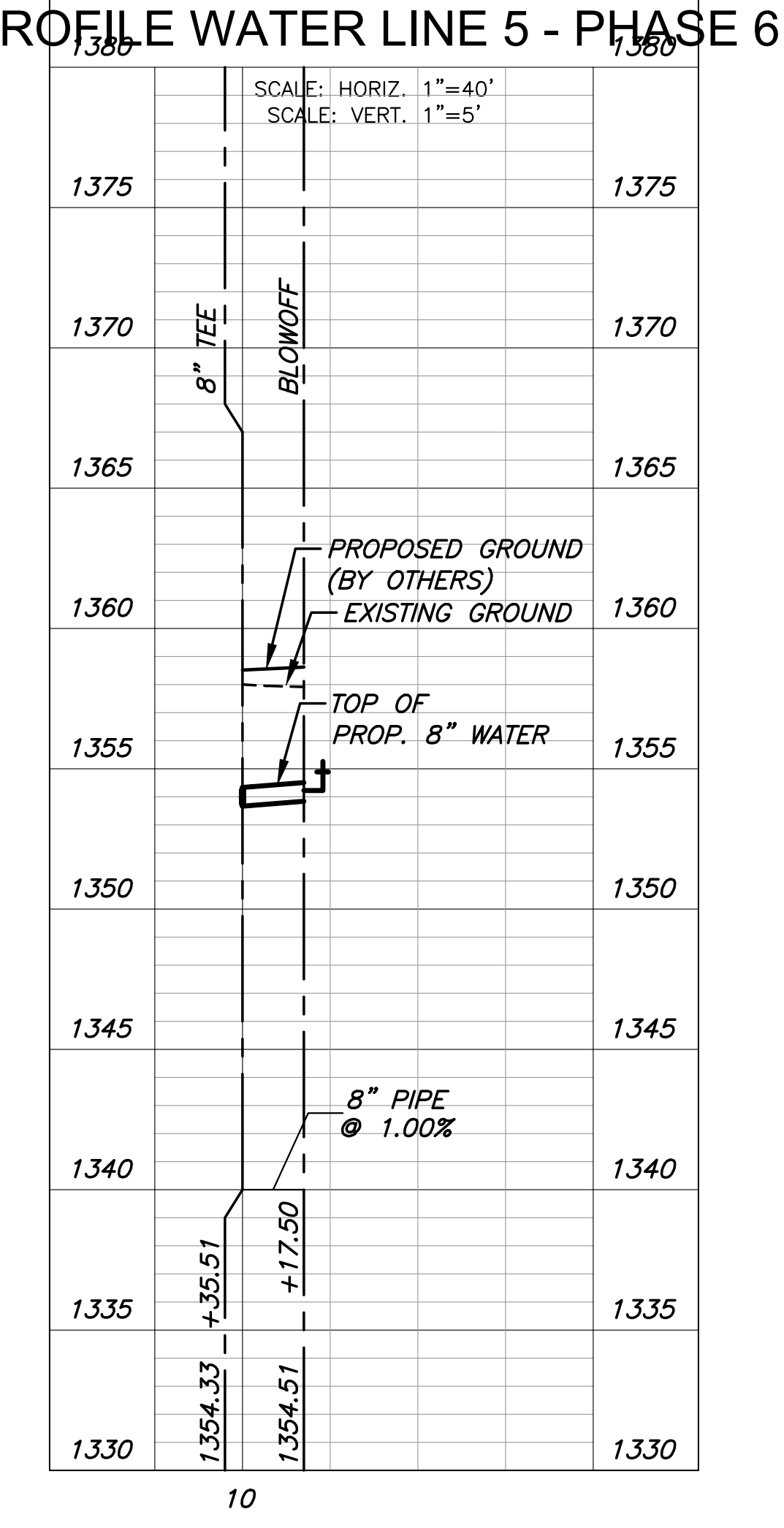


STA. 10+17.50, LINE 5=
 ST. STA. 9+27.75, 22.98' RT.
 1-2" BLOWOFF ASSEMBLY
 VALVE BOX ELEV=1354.9

PLAN WATER LINE 4 - PHASE 6
 PROFILE WATER LINE 4 - PHASE 6



PLAN WATER LINE 5 - PHASE 6
 PROFILE WATER LINE 5 - PHASE 6



WATER DISTRIBUTION SYSTEM FOR
COURTYARDS AT JACOBS FARM 2ND
 PHASE 6

WATER LINE 4-5		
PROJECT NO.	448-2025-014390	
SCALE	1" = 40'	
DRAWN	DESIGNED	CHECKED
CNA	DFL	SPE
NO.	REVISION	DATE
0	ISSUED FOR CONSTRUCTION	08/18/25
SHEET NO. C-104-W06 04 OF 19		