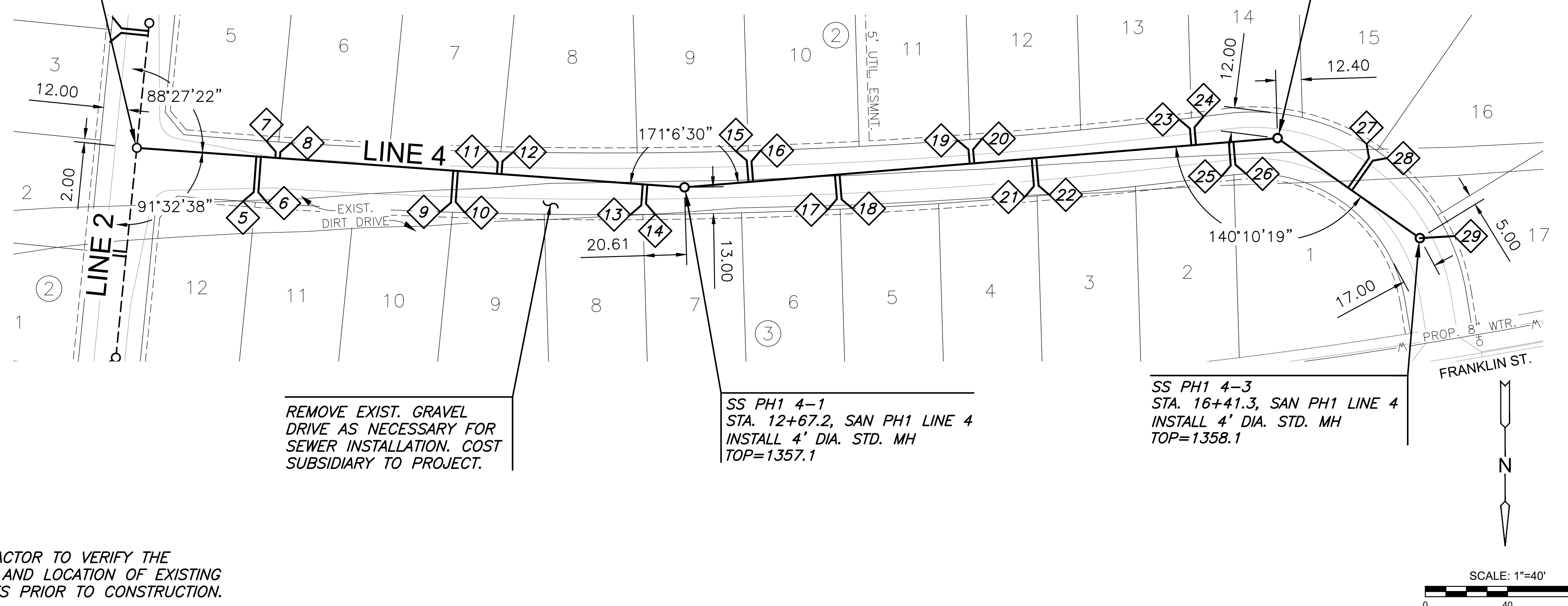


J:\PROJECTS\2025\20250110\2025_PERFECTION_JACOBS_155TH AND CENTRAL\00_2025R8_CAD\SH15505_CIVILSANSECONDDADDITION\2025R8_05_C-104-S01.DWG
 ©2025 MKEC ENGINEERING, INC. ALL RIGHTS RESERVED WWW.MKEC.COM THESE DRAWINGS AND THEIR CONTENTS, INCLUDING, BUT NOT LIMITED TO, ALL CONCEPTS, DESIGNS, & DETAILS ARE THE EXCLUSIVE PROPERTY OF MKEC ENGINEERING, INC. (MKEC), AND MAY NOT BE USED OR REPRODUCED IN ANY WAY WITHOUT THE EXPRESS CONSENT OF MKEC.

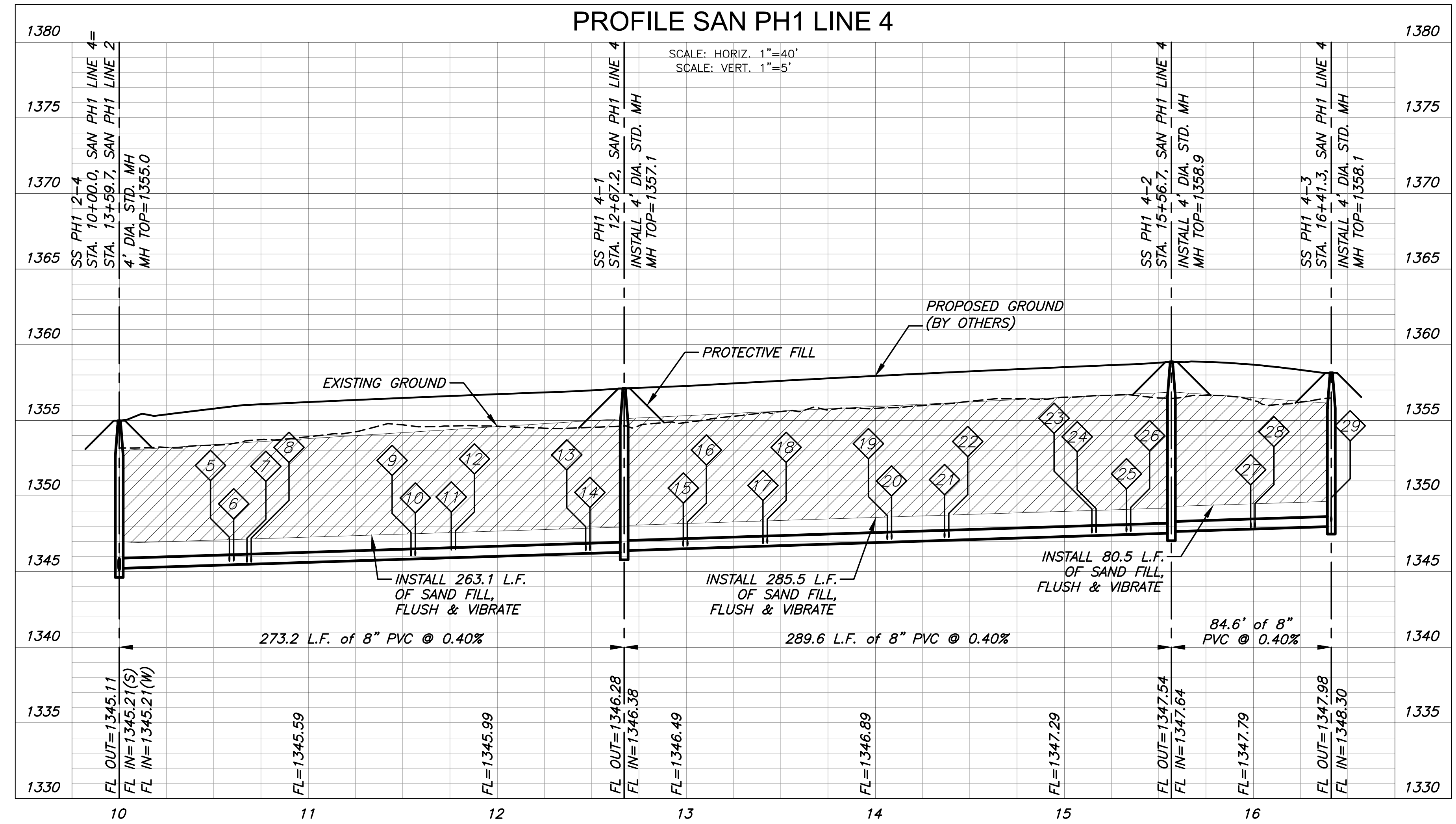
SS PH1 2-4
 STA. 10+00.0, SAN PH1 LINE 4=
 STA. 13+59.7, SAN PH1 LINE 2
 4' DIA. STD. MH
 TOP=1355.0

SS PH1 4-2
 STA. 15+56.7, SAN PH1 LINE 4
 INSTALL 4' DIA. STD. MH
 TOP=1358.9



NOTE:
 CONTRACTOR TO VERIFY THE DEPTH AND LOCATION OF EXISTING UTILITIES PRIOR TO CONSTRUCTION.

PLAN SAN PH1 LINE 4
PROFILE SAN PH1 LINE 4



SANITARY SEWER PLANS FOR
COURTYARDS AT JACOBS FARM 2ND
 PHASE 1

SAN LINE 4		
PROJECT NO.	468-2025-014394	
SCALE	1" = 40'	
DRAWN	DESIGNED	CHECKED
BWS	DFL	SPE
NO.	REVISION	DATE
0	ISSUED FOR CONSTRUCTION	08/18/2025
SHEET NO. C-104-S01		
04 OF 30		