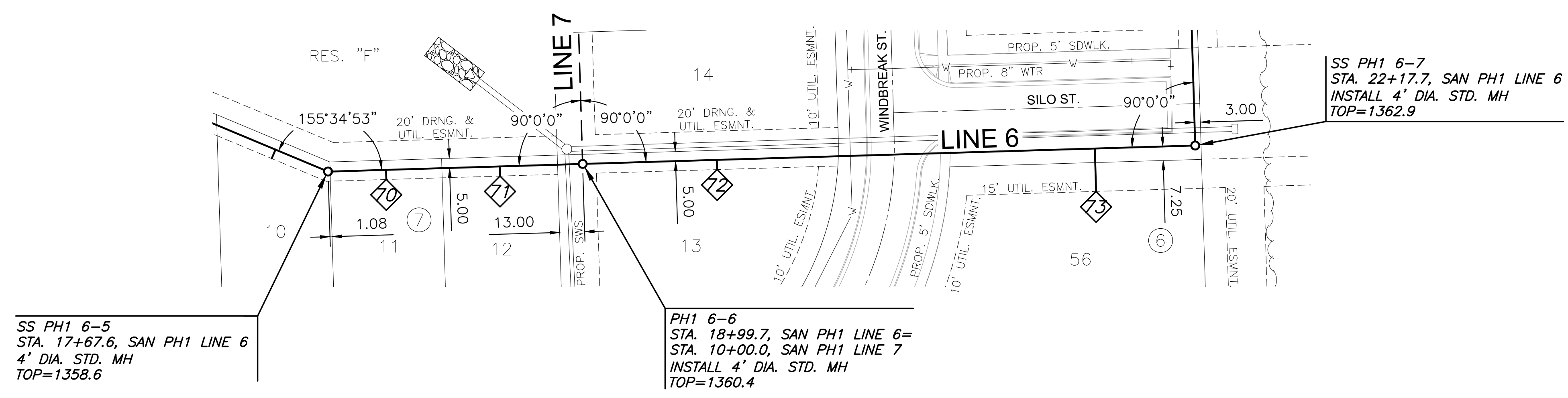
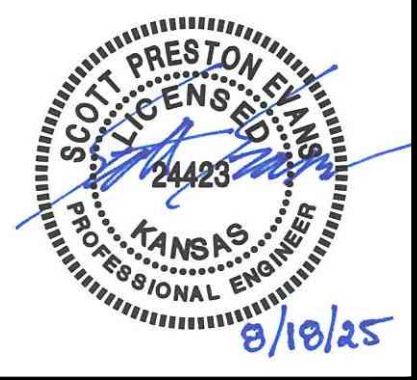


PLOTTED: Tuesday, August 19, 2025 @ 10:34AM

J:\PROJECTS\2025\20250110\2025_PERFECTION_JACOBS_155TH AND CENTRAL\00_2025R8_CAD\SH15505_CIVIL\SANSECON ADDITION\2025R8_05_C-108-S01.DWG

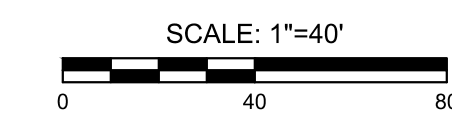
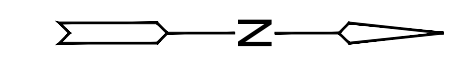


SS PH1 6-5
STA. 17+67.6, SAN PH1 LINE 6
4' DIA. STD. MH
TOP=1358.6

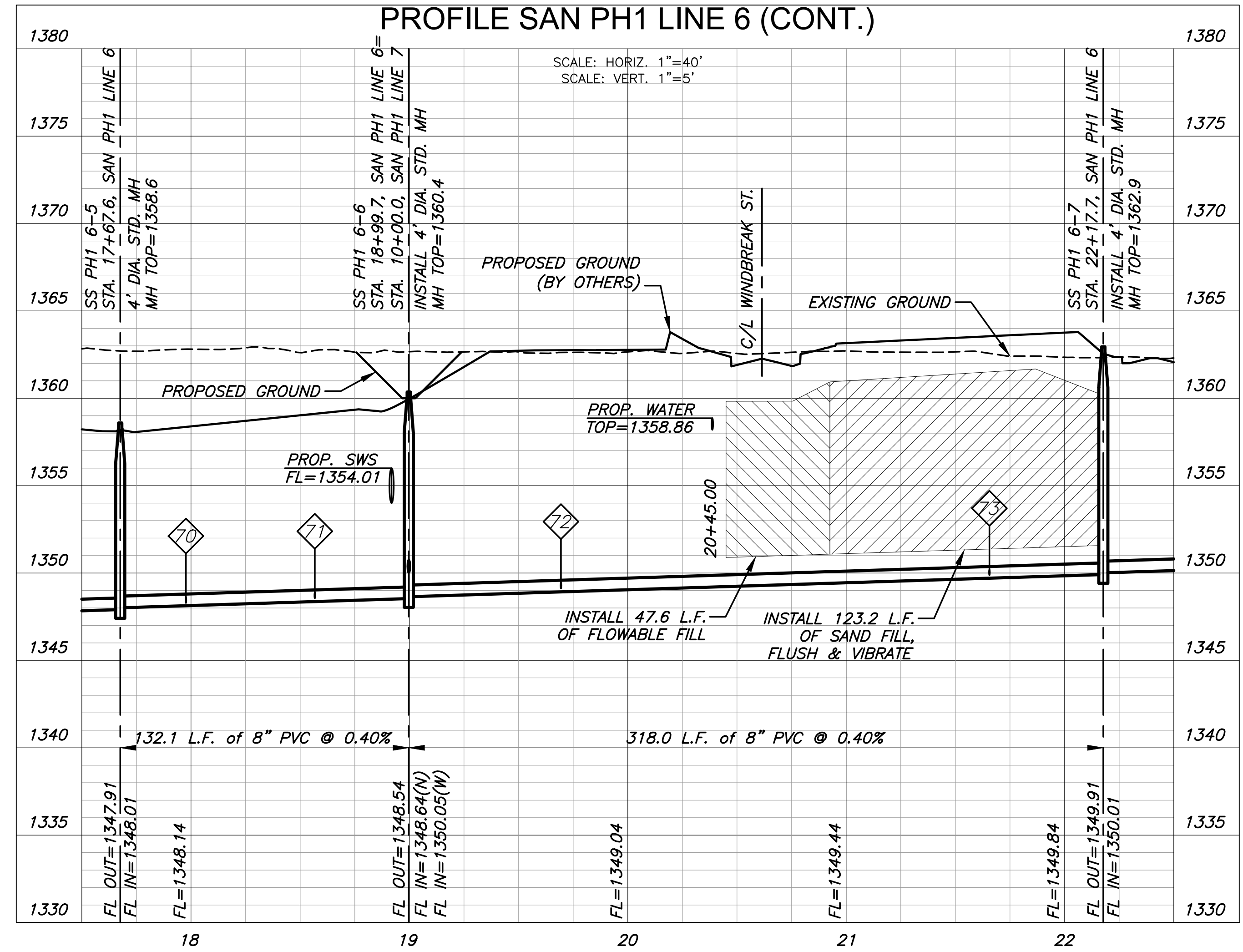
PH1 6-6
STA. 18+99.7, SAN PH1 LINE 6=
STA. 10+00.0, SAN PH1 LINE 7
INSTALL 4' DIA. STD. MH
TOP=1360.4

SS PH1 6-7
STA. 22+17.7, SAN PH1 LINE 6
INSTALL 4' DIA. STD. MH
TOP=1362.9

NOTE:
CONTRACTOR TO VERIFY THE
DEPTH AND LOCATION OF EXISTING
UTILITIES PRIOR TO CONSTRUCTION.



**PLAN SAN PH1 LINE 6 (CONT.)
PROFILE SAN PH1 LINE 6 (CONT.)**



SANITARY SEWER PLANS FOR

COURTYARDS AT JACOBS FARM 2ND

PHASE 1

SAN LINE 6 (CONT.)		
PROJECT NO.	468-2025-014394	
SCALE	1" = 40'	
DRAWN	DESIGNED	CHECKED
HHK	DFL	SPE
ISSUED FOR CONSTRUCTION	08/18/2025	
NO.	REVISION	DATE
SHEET NO. C-108-S01		
08 OF 30		

©2025 MKEC ENGINEERING, INC. ALL RIGHTS RESERVED. WWW.MKEC.COM. THESE DRAWINGS AND THEIR CONTENTS, INCLUDING, BUT NOT LIMITED TO, ALL CONCEPTS, DESIGNS, & DETAILS ARE THE EXCLUSIVE PROPERTY OF MKEC ENGINEERING, INC. (MKEC), AND MAY NOT BE USED OR REPRODUCED IN ANY WAY WITHOUT THE EXPRESS CONSENT OF MKEC.