

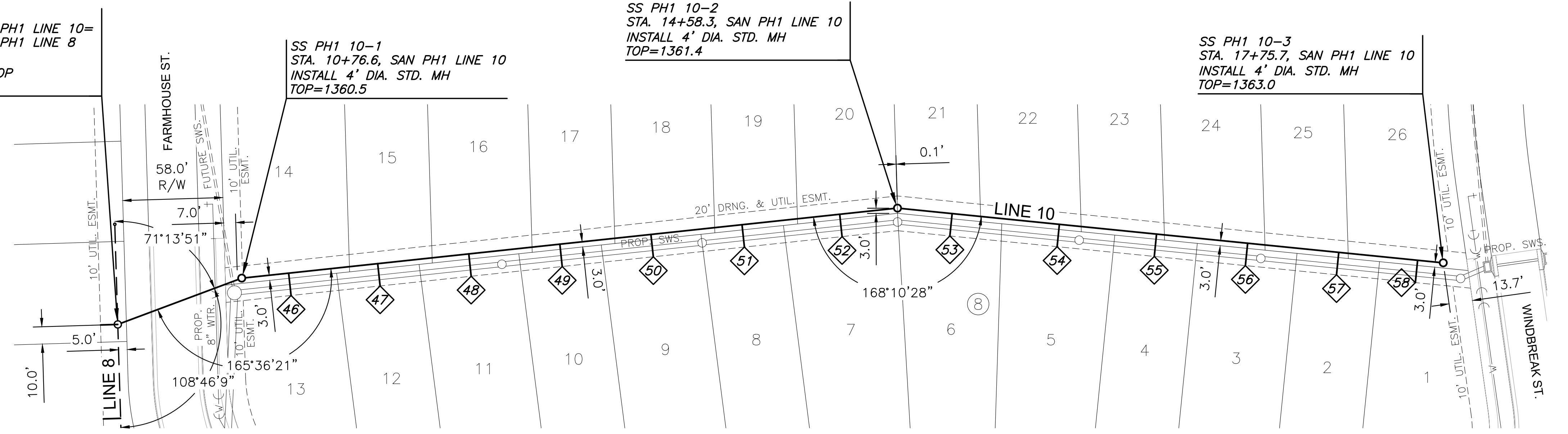
J:\PROJECTS\2022\20110209_PERFECTION_JACOBS\155TH AND CENTRAL\00_CENTRAL\00_CIVIL\SANSECONDDADDITION\202209_05_C-112-S01.DWG
 ©2025 MKEC ENGINEERING, INC. ALL RIGHTS RESERVED WWW.MKEC.COM THESE DRAWINGS AND THEIR CONTENTS, INCLUDING, BUT NOT LIMITED TO, ALL CONCEPTS, DESIGNS, & DETAILS ARE THE EXCLUSIVE PROPERTY OF MKEC ENGINEERING, INC. (MKEC), AND MAY NOT BE USED OR REPRODUCED IN ANY WAY WITHOUT THE EXPRESS CONSENT OF MKEC.

SS PH1 8-3
 STA. 10+00.0, SAN PH1 LINE 10=
 STA. 13+89.0, SAN PH1 LINE 8
 4' DIA. STD. MH
 W/ OUTSIDE MH DROP
 TOP=1360.9

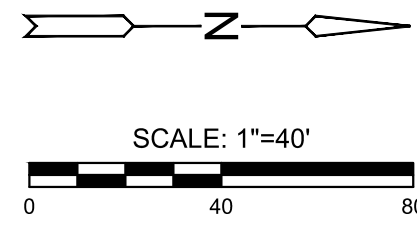
SS PH1 10-1
 STA. 10+76.6, SAN PH1 LINE 10
 INSTALL 4' DIA. STD. MH
 TOP=1360.5

SS PH1 10-2
 STA. 14+58.3, SAN PH1 LINE 10
 INSTALL 4' DIA. STD. MH
 TOP=1361.4

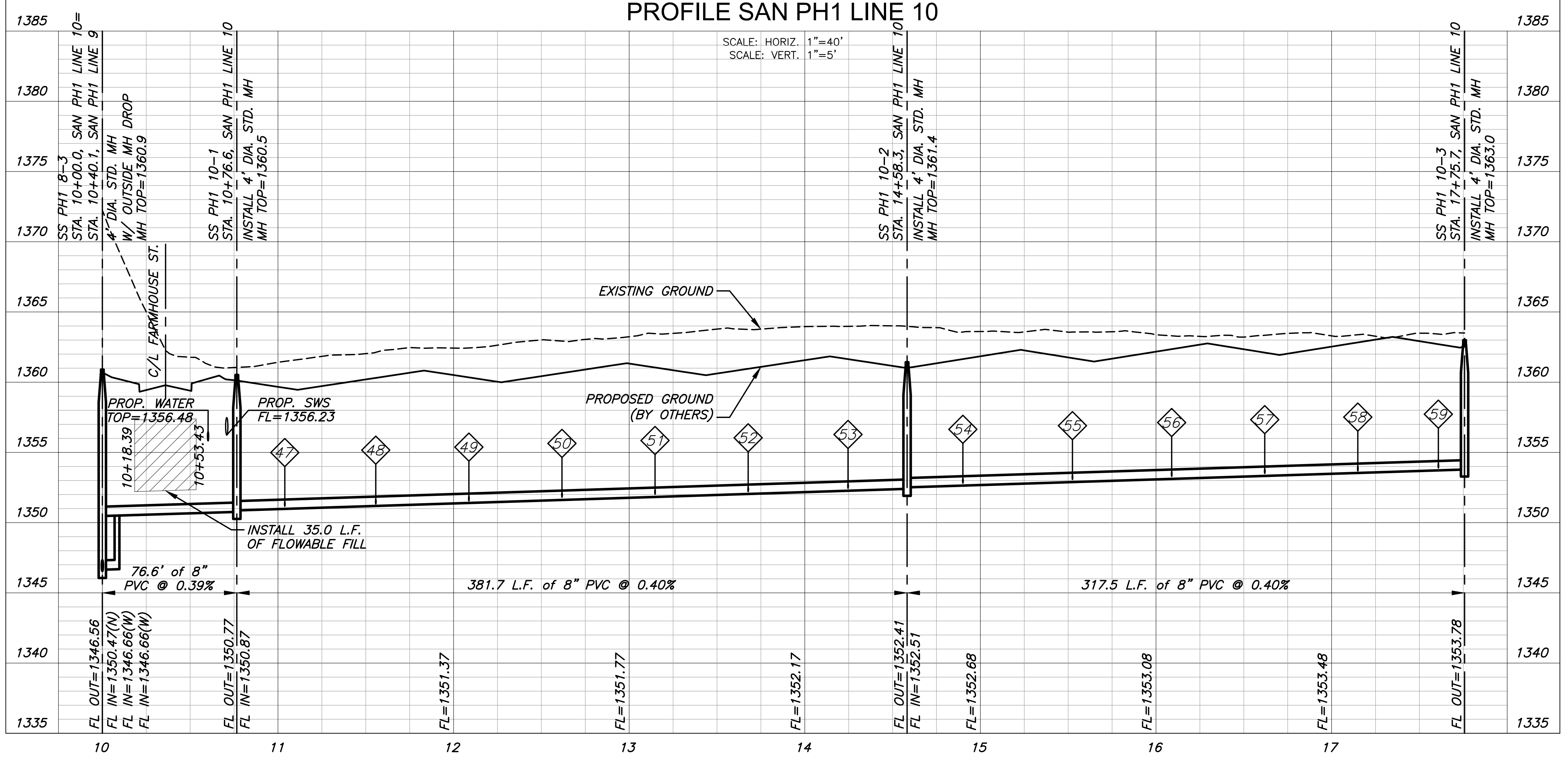
SS PH1 10-3
 STA. 17+75.7, SAN PH1 LINE 10
 INSTALL 4' DIA. STD. MH
 TOP=1363.0



NOTE:
 CONTRACTOR TO VERIFY THE
 DEPTH AND LOCATION OF EXISTING
 UTILITIES PRIOR TO CONSTRUCTION.



PLAN SAN PH1 LINE 10
PROFILE SAN PH1 LINE 10



SANITARY SEWER PLANS FOR
COURTYARDS AT JACOBS FARM 2ND
 PHASE 1

SAN LINE 10		
PROJECT NO.	468-2025-014394	
SCALE	1" = 40'	
DRAWN	DESIGNED	CHECKED
HHK	DFL	SPE
NO.	REVISION	DATE
0	ISSUED FOR CONSTRUCTION	08/18/2025
SHEET NO. C-112-S01		
12 OF 30		