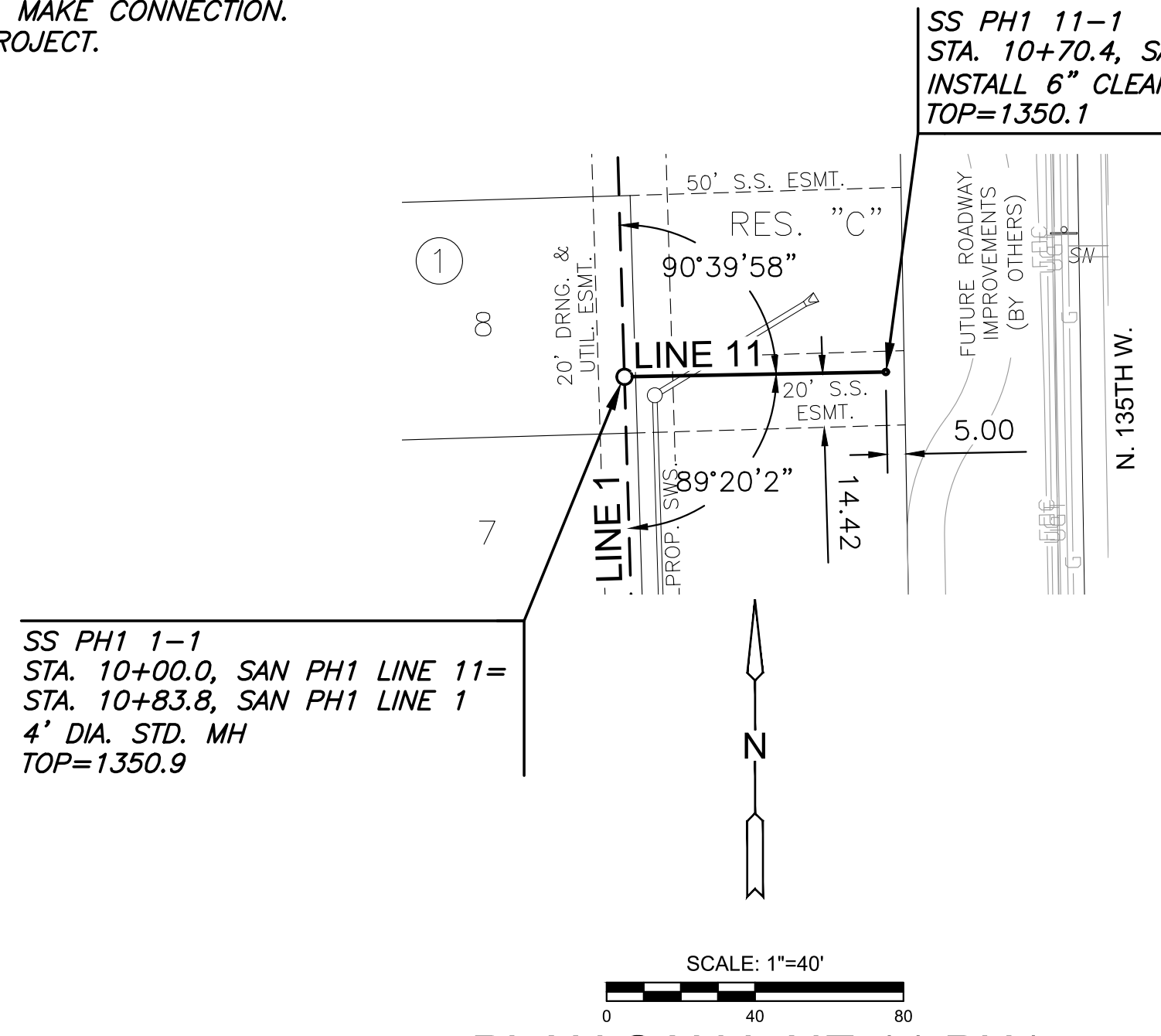


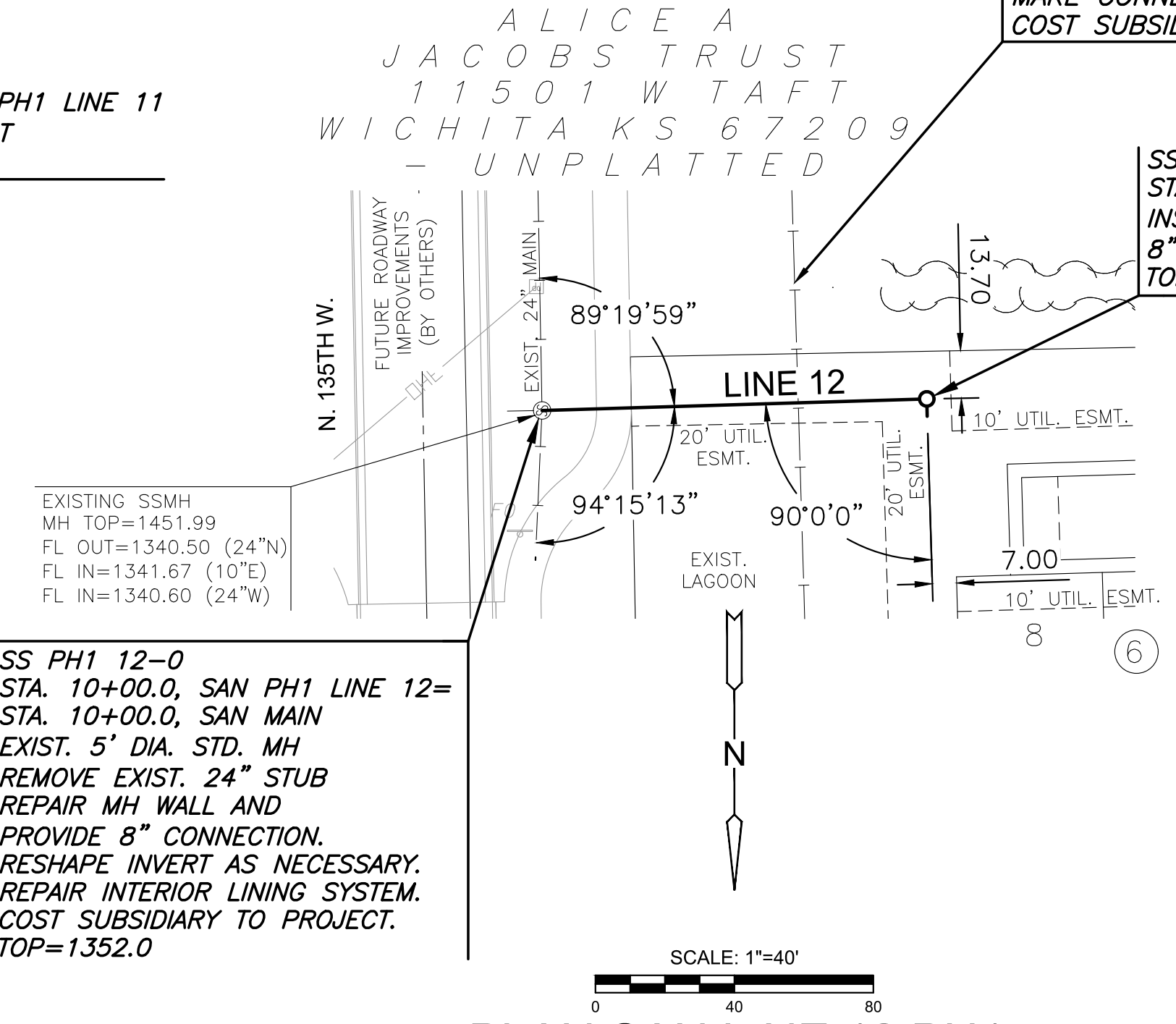
J:\PROJECTS\2022\20110209_PRRFECTION_JACOBS_135TH AND CENTRAL\00_220209_CAD\SH1505_CIVIL\SECOND ADDITION\2020R_05_C-113-S01.DWG
 ©2025 MKEC ENGINEERING, INC. ALL RIGHTS RESERVED. WWW.MKEC.COM. THESE DRAWINGS AND THEIR CONTENTS, INCLUDING, BUT NOT LIMITED TO, ALL CONCEPTS, DESIGNS, & DETAILS ARE THE EXCLUSIVE PROPERTY OF MKEC ENGINEERING, INC. (MKEC), AND MAY NOT BE USED OR REPRODUCED IN ANY WAY WITHOUT THE EXPRESS CONSENT OF MKEC.

NOTE:
 1. CONTRACTOR TO VERIFY THE DEPTH AND LOCATION OF EXISTING UTILITIES PRIOR TO CONSTRUCTION.
 2. CONTRACTOR TO NOTIFY/COORDINATE WITH HOMEOWNER PRIOR TO HOUSE CONNECTION TO NEW SAN MAIN. CONTRACTOR TO MINIMIZE TIME FRAME NEEDED TO MAKE CONNECTION. COST SUBSIDIARY TO PROJECT.



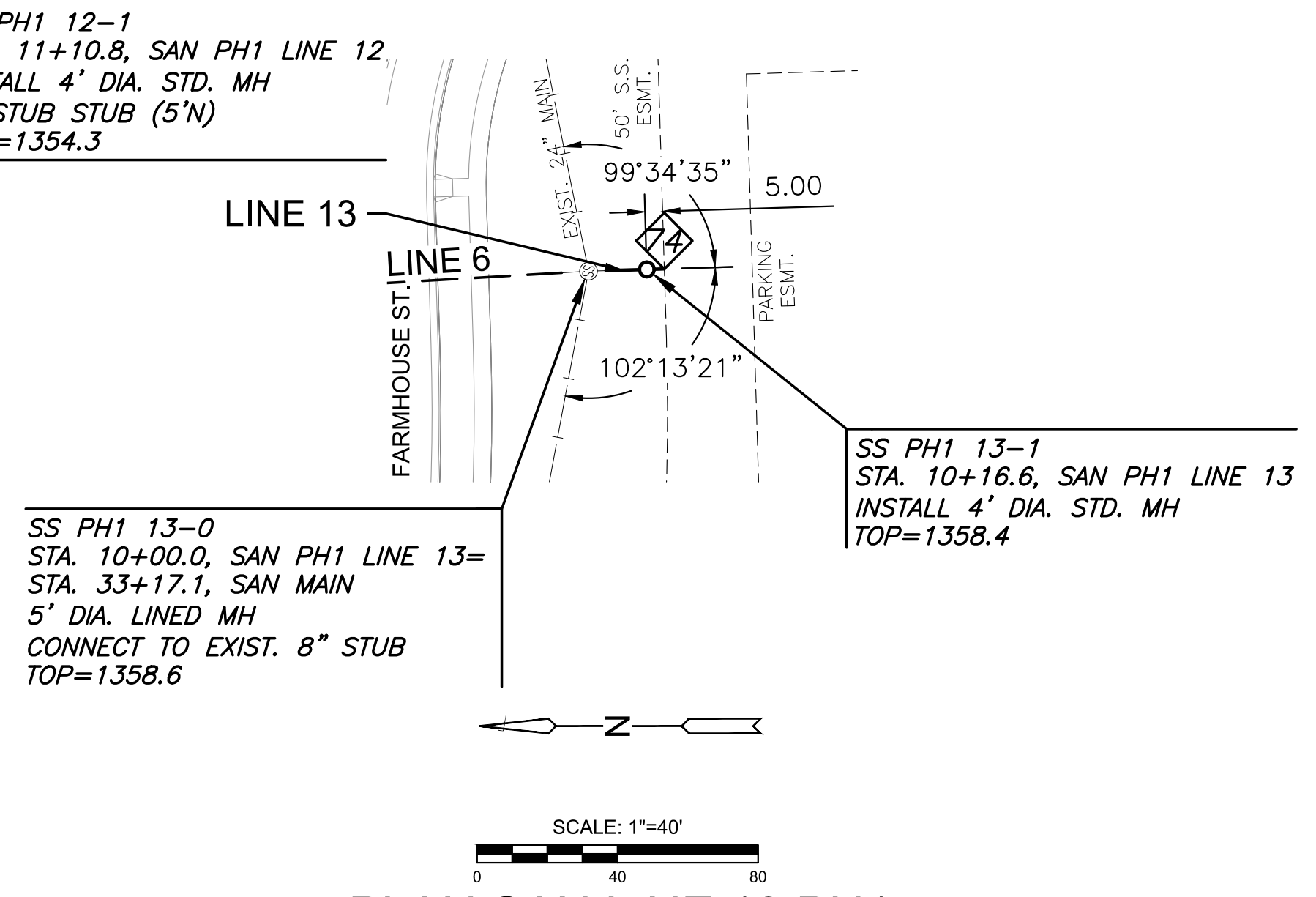
PLAN SAN LINE 11 PH1
 PROFILE SAN LINE 11 PH1

Station	Profile Description	Station
1375	SCALE: HORIZ. 1"=40' SCALE: VERT. 1"=5'	1375
1370		1370
1365	SS PH1 1-1 STA. 10+00.0, SAN PH1 LINE 11= STA. 10+83.8, SAN PH1 LINE 1 4' DIA. STD. MH MH TOP=1350.9	1365
1360	SS PH1 11-1 STA. 10+70.4, SAN PH1 LINE 11 INSTALL 6" CLEANOUT MH TOP=1350.1	1360
1355	PROPOSED GROUND (BY OTHERS)	1355
1350	EXISTING GROUND	1350
1345	PROP. SWS FL=1346.15	1345
1340		1340
1335	70.4' of 8" PVC @ 0.40%	1335
1330	FL OUT=1343.55 FL IN=1343.65(S) FL IN=1343.65(E)	1330
1325	FL OUT=1343.93	1325



PLAN SAN LINE 12 PH1
 PROFILE SAN LINE 12 PH1

Station	Profile Description	Station
1375	SCALE: HORIZ. 1"=40' SCALE: VERT. 1"=5'	1375
1370		1370
1365	SS PH1 12-0 STA. 10+00.0, SAN PH1 LINE 12= STA. 10+00.0, SAN MAIN EXIST. 5' DIA. STD. MH REMOVE EXIST. 24" STUB REPAIR MH WALL AND PROVIDE 8" CONNECTION. RESHAPE INVERT AS NECESSARY. REPAIR INTERIOR LINING SYSTEM. COST SUBSIDIARY TO PROJECT. TOP=1352.0	1365
1360	SS PH1 12-1 STA. 11+10.8, SAN PH1 LINE 12, INSTALL 4' DIA. STD. MH 8" STUB STUB (5'N) MH TOP=1354.3	1360
1355	PROPOSED GROUND (BY OTHERS)	1355
1350	EXISTING GROUND	1350
1345		1345
1340		1340
1335	110.8' of 8" PVC @ 0.40%	1335
1330	FL OUT=1340.50 FL IN=1340.60(24"S) FL IN=1341.93(24"W) FL IN=1341.67(10"E) FL IN=1343.26(8"W)	1330
1325	FL OUT=1343.71 FL IN=1343.81	1325



PLAN SAN LINE 13 PH1
 PROFILE SAN LINE 13 PH1

Station	Profile Description	Station
1380	SCALE: HORIZ. 1"=40' SCALE: VERT. 1"=5'	1380
1375		1375
1370	SS PH1 13-0 STA. 10+00.0, SAN PH1 LINE 13= STA. 33+17.1, SAN MAIN 5' DIA. LINED MH CONNECT TO EXIST. 8" STUB MH TOP=1358.6	1370
1365	SS PH1 13-1 STA. 10+16.6, SAN PH1 LINE 13 INSTALL 4' DIA. STD. MH MH TOP=1358.4	1365
1360	EXISTING GROUND	1360
1355	PROPOSED GROUND (BY OTHERS)	1355
1350		1350
1345		1345
1340	16.6' of 8" PVC @ 0.40%	1340
1335	FL OUT=1343.16 FL IN=1343.26(24"W) FL IN=1344.44(8"N) FL IN=1344.44(8"S)	1335
1330	FL OUT=1344.51 FL IN=1344.83	1330



SANITARY SEWER PLANS FOR
COURTYARDS AT JACOBS FARM 2ND
 PHASE 1

SAN LINE 11, 12, & 13		
PROJECT NO. 468-2025-014394		
SCALE 1"=40'		
DRAWN	DESIGNED	CHECKED
BWS	DFL	SPE
NO.	REVISION	DATE
0	ISSUED FOR CONSTRUCTION	08/18/2025
SHEET NO. C-113-S01		
13 OF 30		